

NOTES:
 POOL DESIGN CONFORMS TO THE FOLLOWING:
 ANSI/NSPI-5 2003 EDITION.
 ICC-ES REPORT NO. ER 2417.
 98-76 BUILDING ADMINISTRATIVE CODE.
 2004 FLORIDA BUILDING CODE:
 A. PLUMBING 2004 EDITION.
 B. FUEL/GAS 2004 EDITION.
 C. MECHANICAL 2004 EDITION.
 D. RESIDENTIAL 2004 EDITION.
 NATIONAL ELECTRIC CODE 2002 EDITION.

[Handwritten Signature]
 MAY 05 2005

REV	DESCRIPTION	DATE	APRV
AECC/SAN JUAN POOLS			
BY: AMERICAN ENVIRONMENTAL CONTAINER CORP. 2302 LASSO LANE LAKELAND, FLORIDA 33801 (941) 666-3020			
Date	Checked By	Job No	
DEC. 2005			
Title			Sheet
RESIDENTIAL POOLS			1 of 2

GENERAL CONSTRUCTION NOTES:

- Pool installation shall be by a qualified and licensed (approved by local building department and San Juan pools) pool contractor. The installation shall conform to all state and local building codes, as well as tenants of any association with jurisdiction.
- Water supply and disposal shall be so arranged that there is no cross connection with domestic service.
- Main drain cover to be certified as compliant with ANSI/ASME A112.19.8M or a grate with a minimum open area of 144 sq. in. or as to local codes, securely fastened in place.
- Pool turnover shall be 12 hours maximum with cartridge filter and properly grounded approved pump (min. 1/2 hp per 50 GPM at 55 TDH). Pool pump to be above ground with weather protective housing.
- All electric shall conform to N.E.C. No overhead wires shall pass within 10 feet of pool.
- Concrete shall be 2500 psi at 28 days. Pool bottom to be placed in 4" Min. of sand. Conc. Slab to have 6x6 #10/10WMM. Fiberglass conc. may be used in lieu of 6x6 #10/10WMM as allowed by code.
- Hydrostatic pressures: design assumes pool is full at all times, with any required hold downs and reinforcing by others.
- Hydrostatic relief valve not credited for more than 2 feet of the difference of head between pool bottom and floor criteria level, use where code requires.
- Pool shall bear on undisturbed soil, free of peat, muck or other deleterious material of any significant amount.
- Backfill shall have bearing value greater than 600 PSF with vertical angle of repose. Backfill material must not contain rocks that could damage pool walls. Backfill shall be installed and compacted in lifts to match water level in pool and not deform pool.
- Steps or ladders shall be provided at each end of pool per code.
- Pool ladders shall be corrosion resistant with non-slip treads. Hand rails and ladders shall have No. 8 solid copper grounds and Solidly imbedded anchors.
- Steps, treads and risers shall conform to local codes when different than that shown.
- Therapy seats, where installed, shall be recessed in to the sides of such pool not more than 20 inches below water level, and in such a manner as to clearly distinguish such underwater obstructions from pool areas in to which persons may dive.
- Swimming pool skimmer(s) shall have deck openings.
- Electrical hook-up of pool equipment, rails, boxes, etc and grounding of deck steel shall be in accordance with the National Electrical Code and all applicable state and local building codes by a licensed electrical contractor.
- Install 12 volt light. When allowed by local code. Higher voltage shall be GFI protected per NEC. At installers option Fiberoptic Lighting may be used.
- If the slope from shallow end to deep end is more than 1:7 a safety rope shall be provided when required.
- Supports and steps shall be properly reinforced and of sufficient structural strength to safely carry all anticipated loads.
- All pipe to be PVC schedule 40 suitable for potable water, or to local code.
- Direct suction pipes from the pool shall have Secondary Reliefs.
- All fittings per 2004 Florida Building Code.
- Max. velocity in pressure piping to be 10' per second.
- Max. velocity in suction piping to be 8' per second.

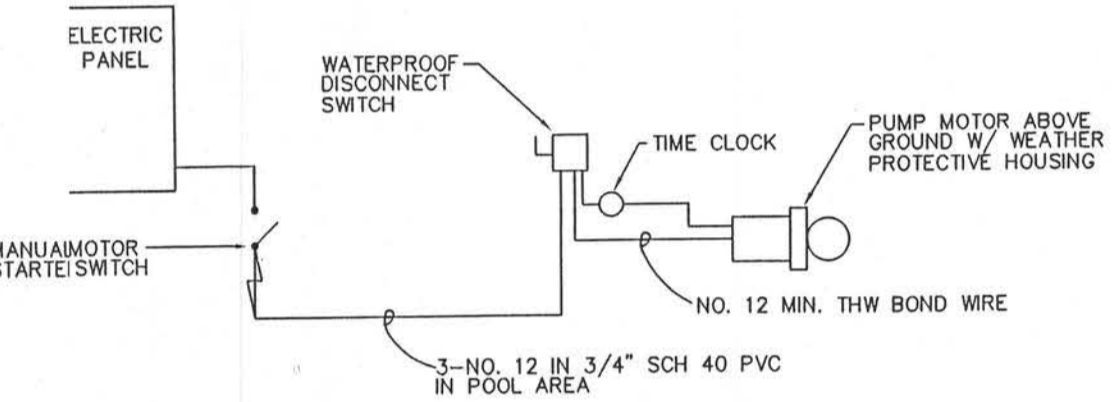
POOL EQUIPMENT AND PROPERTIES

Quantity	Item	Manufacturer
	Inlet-Return 1 1/2" white cyclone Model SP-1032	Hayward MFG. Co. or Equal.
	Inlet-Directional Flow white cyclone "Hydro-stream" with 1/2" hole, Model SP-1419-C	Hayward MFG. Co. or Equal.
	Main Drain Anti-Vortex Model SP-1048-AV or 1035-AV	Hayward MFG. Co. or Equal.
	Hydrostatic Relief Valve Model SP-1056	Hayward MFG. Co. or Equal.
	Skimmer Model SP-1076	Hayward MFG. Co. or Equal.
	Niche Light Assembly PVC SP607 with 1" Conduit connection	Hayward MFG. Co. or Equal.
	Light Assembly 100 watt, 12 volt with Power Cord	American Products Co. or Equal.

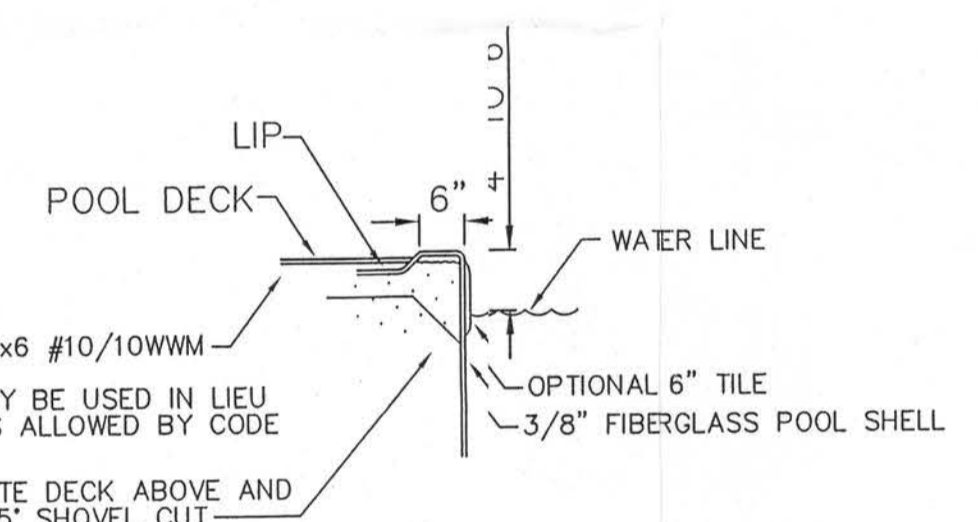
Quantities Specified at Construction

Typical properties of a REINFORCED FIBERGLASS pool:

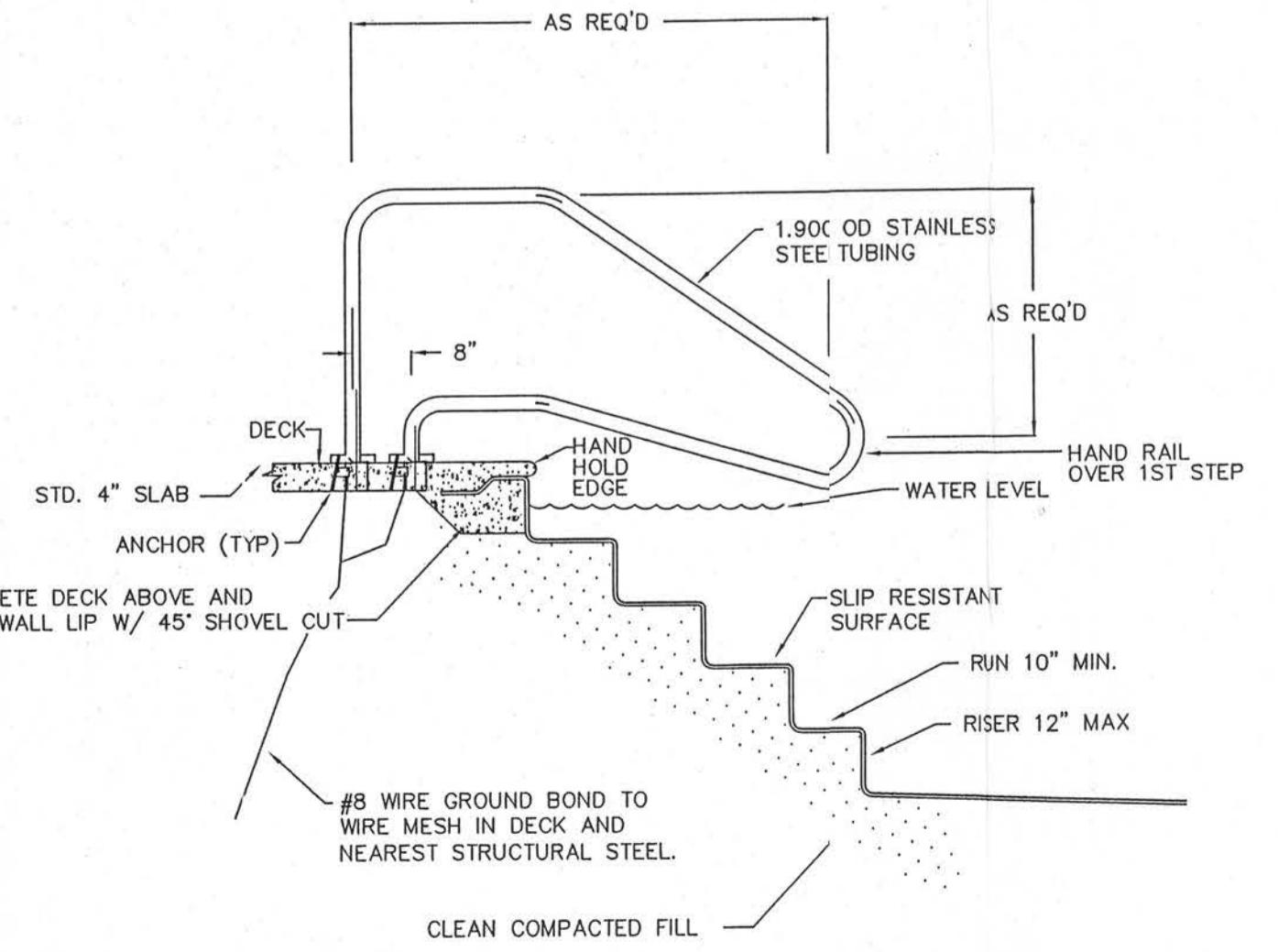
Pool hardness of 30 mil gel coat	40 - 50
Gel content by weight	27%
Tensile strength, PSI at 77 F	19,500
Tensile elongation	1 - 2%
Flexural strength, PSI at 77 F	23,800 - 27,600
Flexural modulus, PSI x 10 at 77 F	0.72 - 0.77
1/2" impact FT-LEB/inch of notch	5.8
Compressive strength, PSI	25,000 to 38,000
Typical thickness inches	3/8"



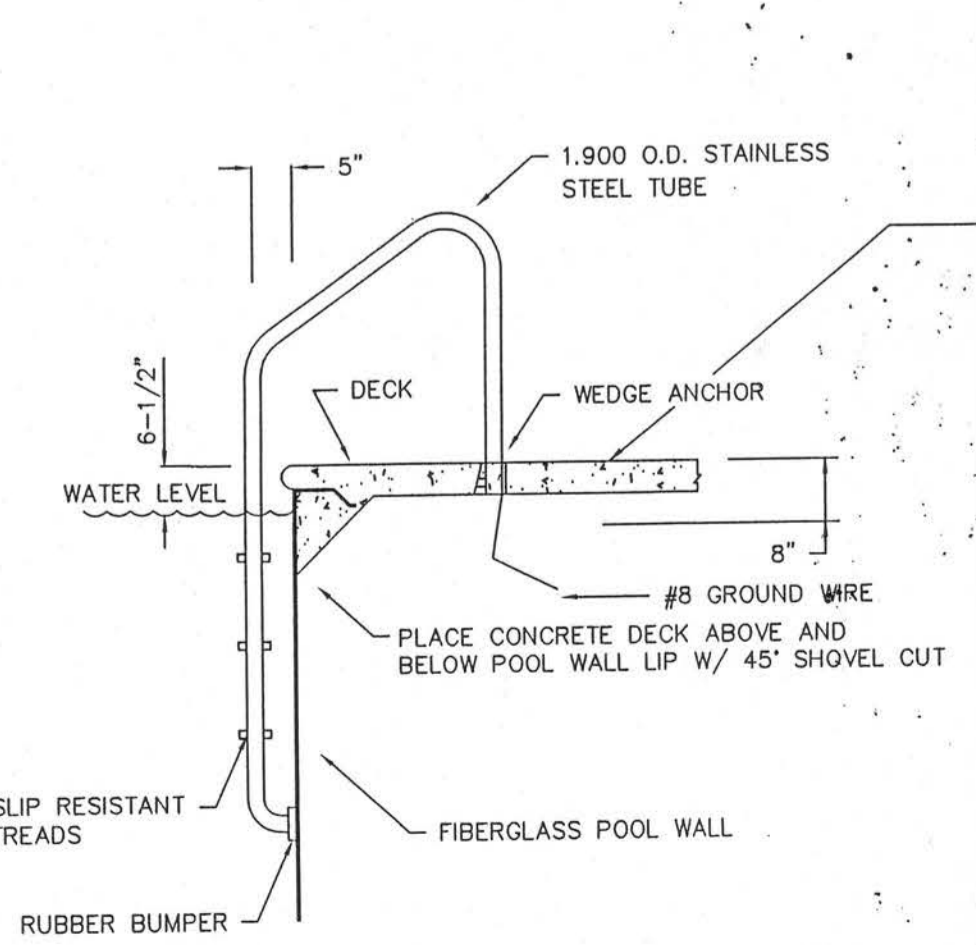
ELECTRICAL DIAGRAM
NTS



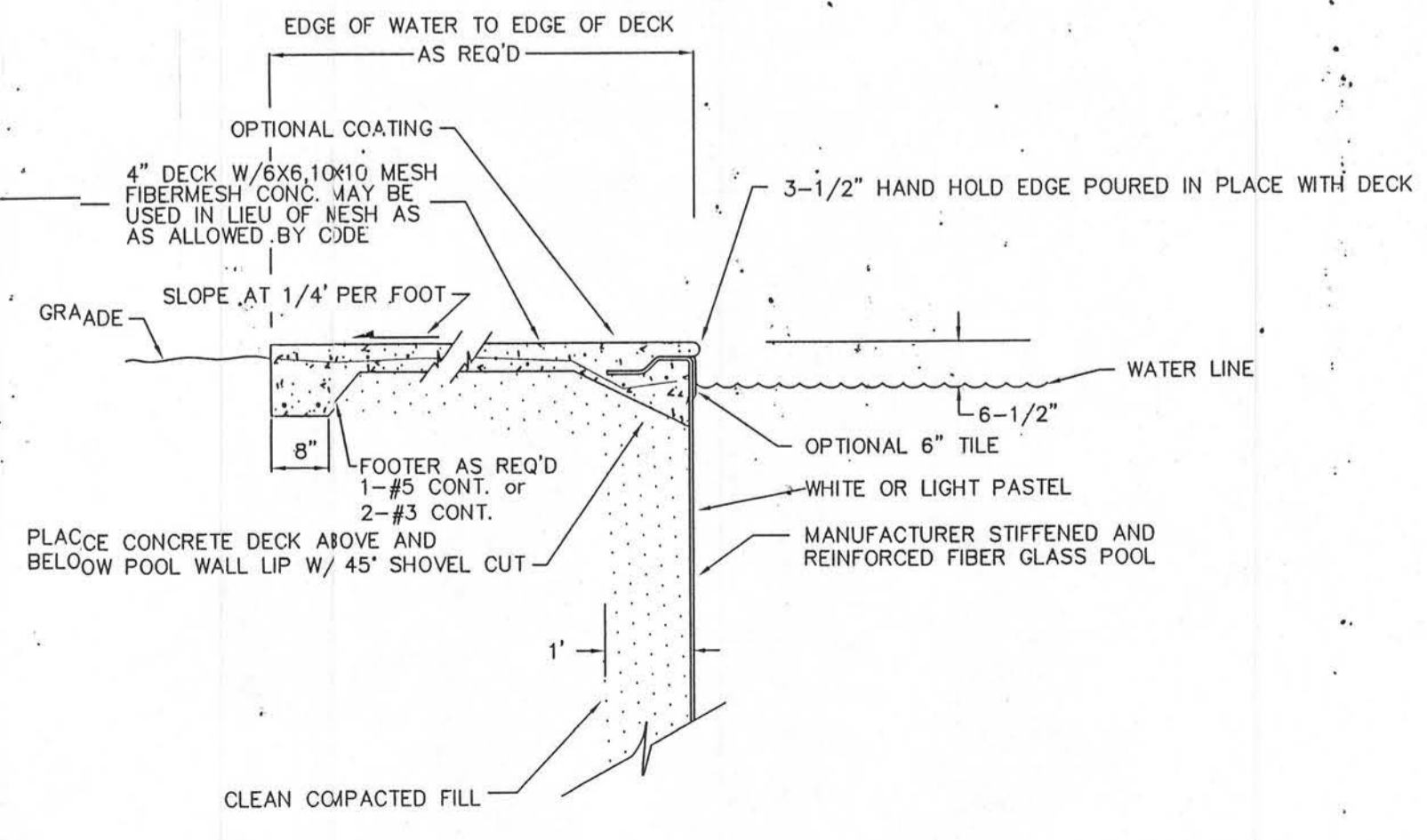
ALTERNATE COPNG DETAIL
NOT TO SCALE



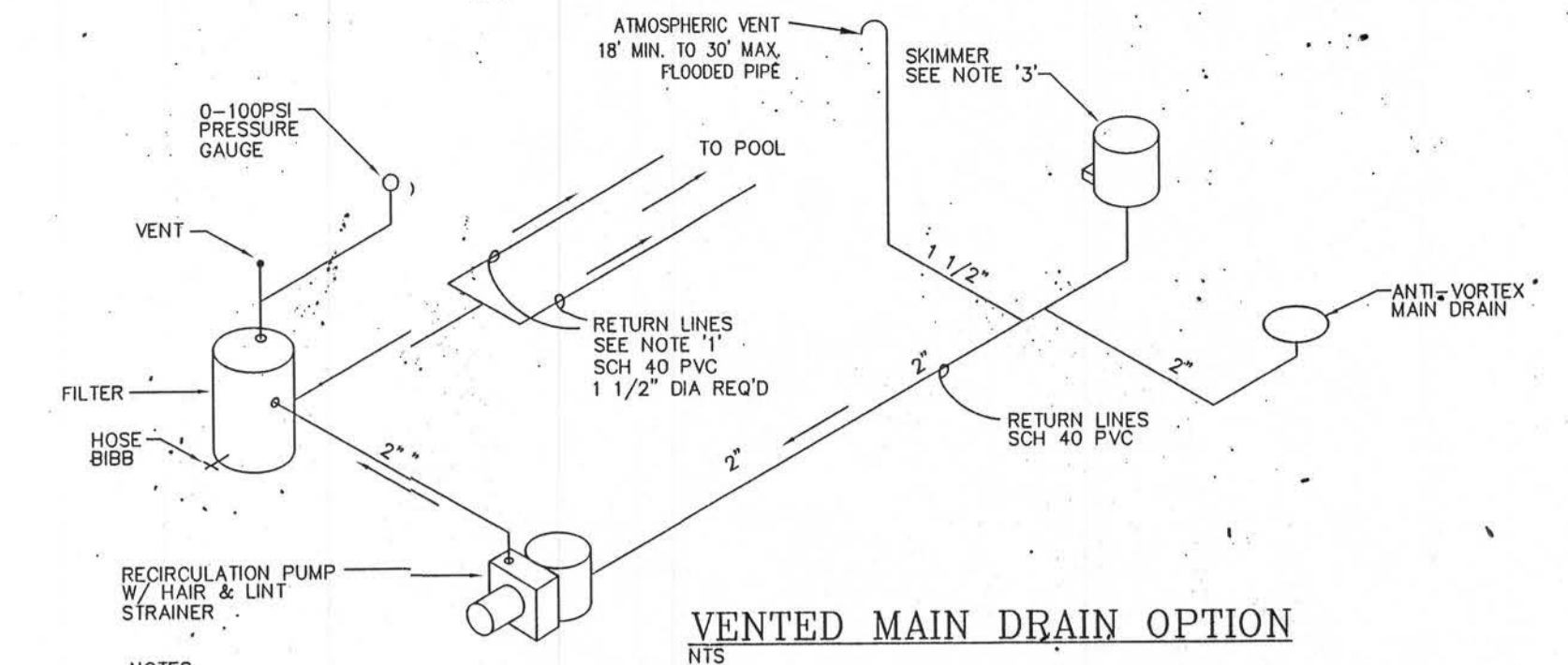
STEP HANDRAIL SECTION
NOT TO SCALE



LADDER SECTION
NOT TO SCALE

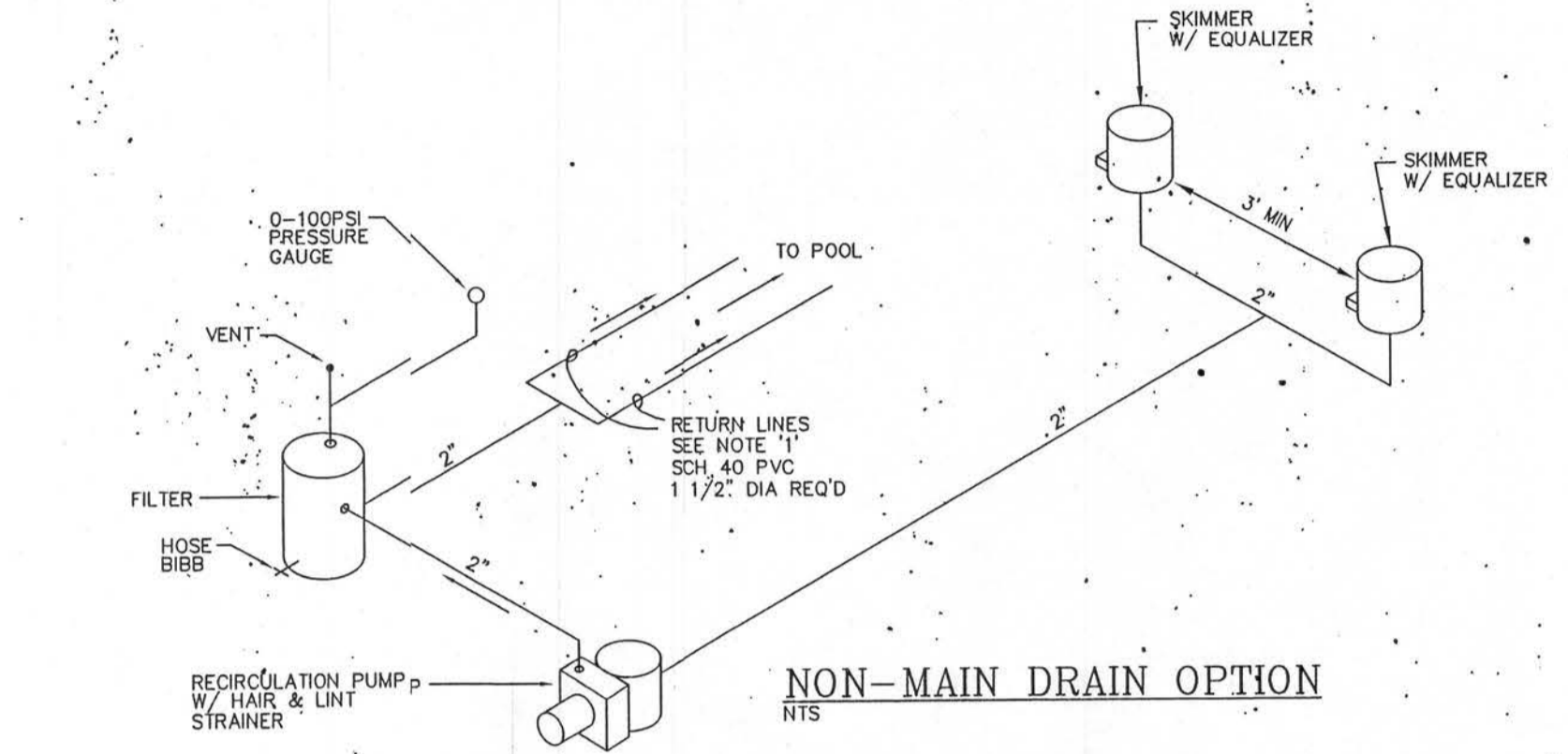


WALL SECTION
NOT TO SCALE



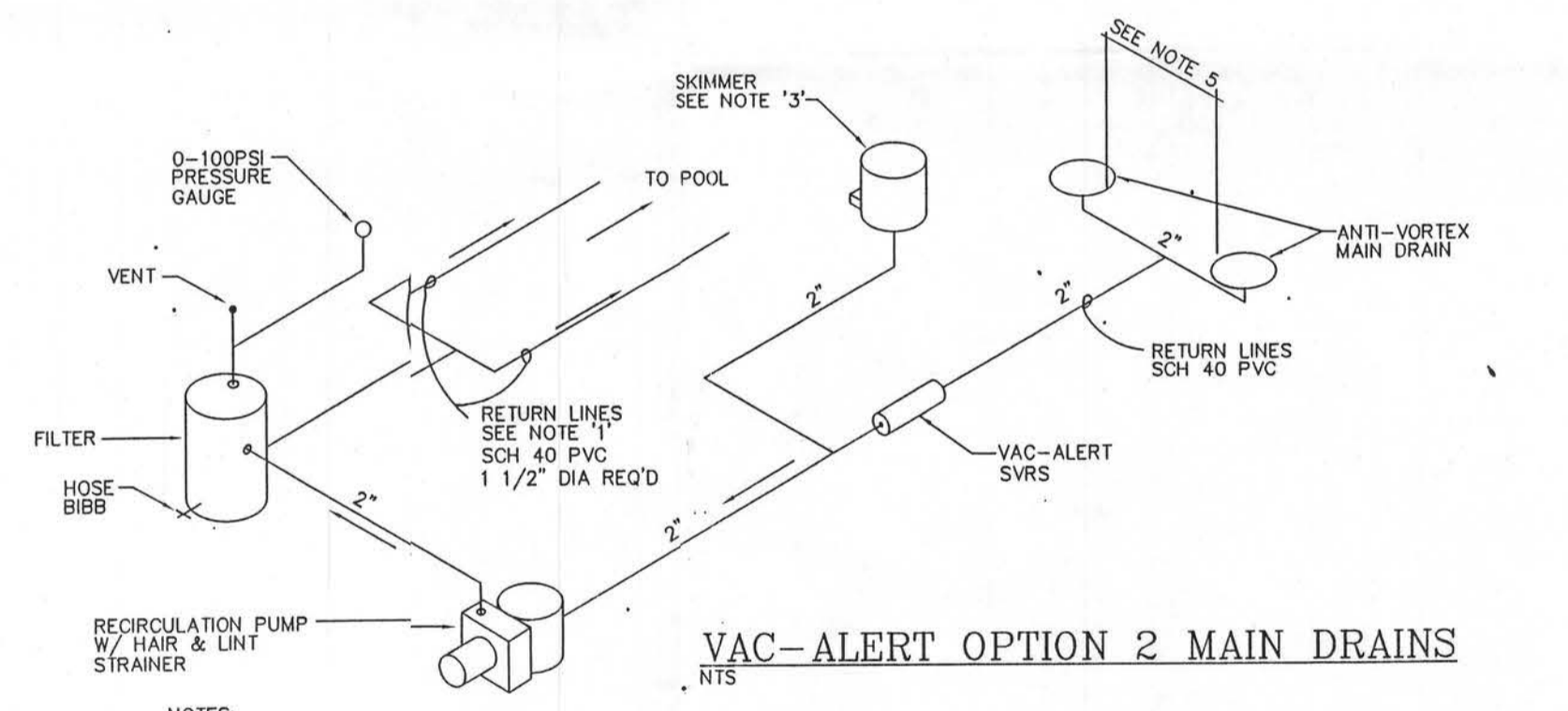
VENTED MAIN DRAIN OPTION
NTS

- NOTES:
- AT LEAST ONE RETURN LINE IS REQUIRED FOR EVERY 300 SQ. FT. OF SURFACE AREA. MINIMUM SEPARATION OF LINES ENTERING POOL SHALL BE 10 FT.
 - SUMP LINE (WHEN REQ'D) TO BE 2" SCH. 40 PVC FROM 4 CUBIC FOOT GRAVEL BED BENEATH MAIN DRAIN TO 18" FROM EQUIPMENT.
 - TWO SKIMMERS REQUIRED IF POOL AREA GREATER THAN 800 SF.
 - SKIMMER AND MAIN DRAIN MUST BE PLUMBED TOGETHER WITH A COMMON LINE TO THE PUMP. SKIMMER AND MAIN DRAIN CAN NOT BE VALVED SEPARATELY.



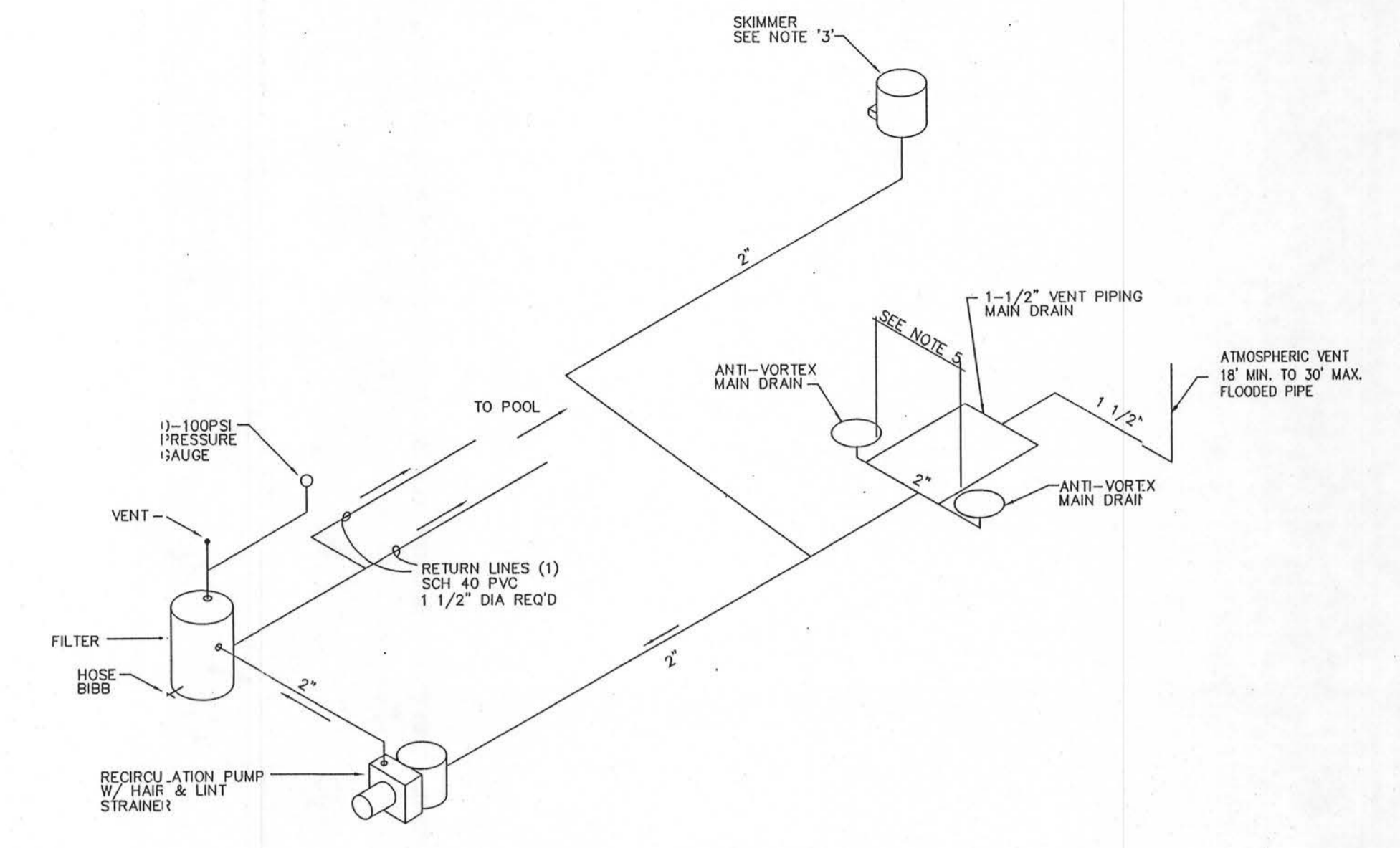
NON-MAIN DRAIN OPTION
NTS

- NOTES:
- AT LEAST ONE RETURN LINE IS REQUIRED FOR EVERY 300 SQ. FT. OF SURFACE AREA. MINIMUM SEPARATION OF LINES ENTERING POOL SHALL BE 10 FT.
 - SUMP LINE (WHEN REQ'D) TO BE 2" SCH. 40 PVC FROM 4 CUBIC FOOT GRAVEL BED BENEATH MAIN DRAIN TO 18" FROM EQUIPMENT.
 - SKIMMERS MUST BE PLUMBED TOGETHER WITH A COMMON LINE TO THE PUMP. SKIMMERS CAN NOT BE VALVED SEPARATELY.



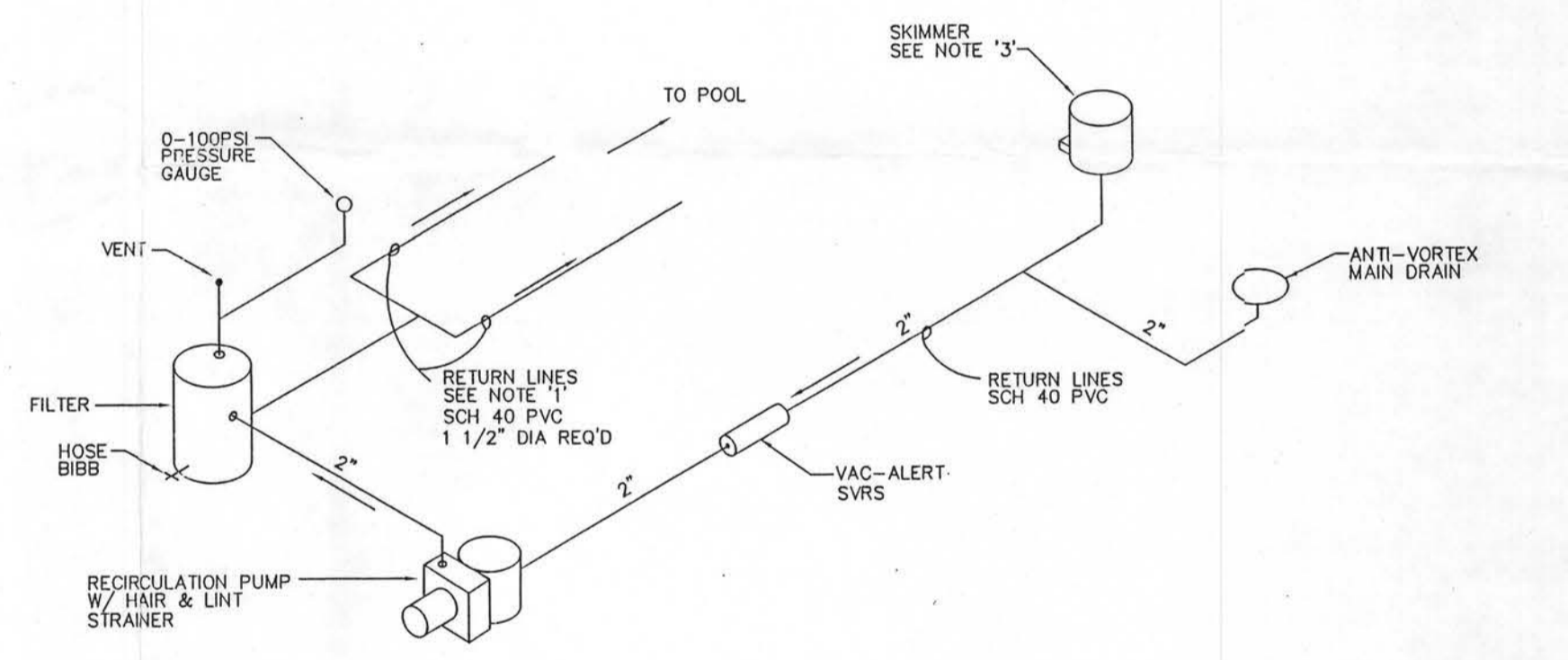
VAC-ALERT OPTION 2 MAIN DRAINS
NTS

- NOTES:
- AT LEAST ONE RETURN LINE IS REQUIRED FOR EVERY 300 SQ. FT. OF SURFACE AREA. MINIMUM SEPARATION OF LINES ENTERING POOL SHALL BE 10 FT.
 - SUMP LINE (WHEN REQ'D) TO BE 2" SCH. 40 PVC FROM 4 CUBIC FOOT GRAVEL BED BENEATH MAIN DRAIN TO 18" FROM EQUIPMENT.
 - TWO SKIMMERS REQUIRED IF POOL AREA GREATER THAN 800 SF.
 - MAIN DRAINS MUST BE PLUMBED TOGETHER WITH A COMMON LINE TO THE PUMP. MAIN DRAINS CAN NOT BE VALVED SEPARATELY.
 - MAIN DRAINS TO BE MIN. 3" APART OR ON DIFFERENT PLANES.



ATMOSPHERIC VENT OPTION
NTS

- NOTES:
- AT LEAST ONE RETURN LINE IS REQUIRED FOR EVERY 300 SQ. FT. OF SURFACE AREA. MINIMUM SEPARATION OF LINES ENTERING POOL SHALL BE 10 FT.
 - SUMP LINE (WHEN REQ'D) TO BE 2" SCH. 40 PVC FROM 4 CUBIC FOOT GRAVEL BED BENEATH MAIN DRAIN TO 18" FROM EQUIPMENT.
 - TWO SKIMMERS REQUIRED IF POOL AREA GREATER THAN 800 SF.
 - MAIN DRAIN LOCATED NEAR DEEPEST PART OF THE POOL.
 - POOL MUST HAVE MAIN DRAIN MINIMUM 3"-0" APART OR SEPARATED ON DIFFERENT PLANES.
 - MAIN DRAINS MUST BE PLUMBED TOGETHER WITH A COMMON LINE TO THE PUMP. MAIN DRAINS CAN NOT BE VALVED SEPARATELY.



VAC-ALERT OPTION
NTS

- NOTES:
- AT LEAST ONE RETURN LINE IS REQUIRED FOR EVERY 300 SQ. FT. OF SURFACE AREA. MINIMUM SEPARATION OF LINES ENTERING POOL SHALL BE 10 FT.
 - SUMP LINE (WHEN REQ'D) TO BE 2" SCH. 40 PVC FROM 4 CUBIC FOOT GRAVEL BED BENEATH MAIN DRAIN TO 18" FROM EQUIPMENT.
 - TWO SKIMMERS REQUIRED IF POOL AREA GREATER THAN 800 SF.
 - SKIMMER AND MAIN DRAIN MUST BE PLUMBED TOGETHER WITH A COMMON LINE TO THE PUMP. SKIMMER AND MAIN DRAIN MUST NOT BE VALVED SEPARATELY.

NOTES:
POOL DESIGN CONFORMS TO THE FOLLOWING:
ANSI/NSPF-5 2003 EDITION,
ICC-ES REPORT NO. ESR 2417,
98-76 BUILDING ADMINISTRATIVE CODE.
2004 FLORIDA BUILDING CODE:
A. PLUMBING 2004 EDITION,
B. FUEL/GAS 2004 EDITION,
C. MECHANICAL 2004 EDITION,
D. RESIDENTIAL 2004 EDITION,
NATIONAL ELECTRIC CODE 2002 EDITION.

REV	DESCRIPTION	DATE	APRV
AECC/SAN JUAN POOLS			
BY: AMERICAN ENVIRONMENTAL CONTAINER CORP. 2302 LASSO LANE LAKELAND, FLORIDA 33801 (941) 666-3020			
Date	Checked By	Job No.	
10-27-05	KLB		
Title			Sheet
SPECIFICATIONS/DETAILS			2of2

MAY 05 2005