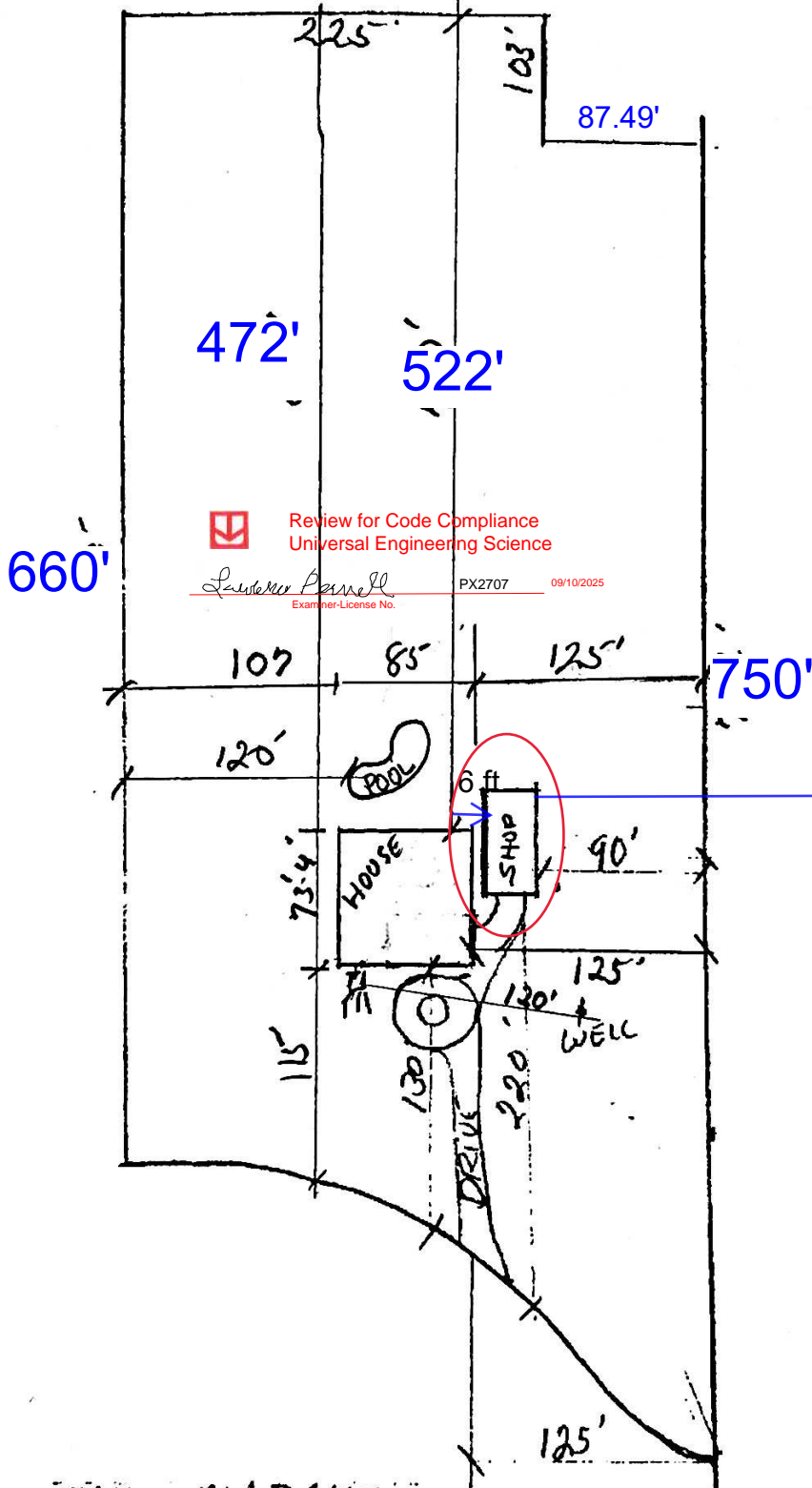


21-75-17  
10039-106

NORTH



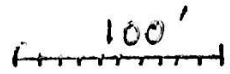
Review for Code Compliance  
Universal Engineering Science

*Lawrence Pennell*  
Examiner License No.

PX2707 09/10/2025

Shop  
Will be permitted separately

TOM & MARSHA  
BENARD  
HERMITAGE GLEN



1" = 100'

### Columbia County Property Appraiser

Jeff Hampto  
updated: 10/2/202



#### TOOLS

#### Measure Output

dbl-click or <shift>-click to auto-close polygon

#### Current Segment:

725.74 > 272.6

0.14 mi > S02d35'28.9E

#### Running Length:

1451.48 0.27 mi

#### Estimated Perimeter:

#### Estimated Area:

0 sqft

0 sqmi 0 ac

#### Traverse Report: (show: DD | KML)

p1) 82d36'36.6W, 29d52'01.5N  
p2) 82d36'36.8W, 29d52'08.6N  
s1) 725.74 >N02d35'28.9W  
p1) 82d36'36.6W, 29d52'01.5N  
s2) 725.74 >S02d35'28.9E  
[P] 1451.48 ft (0.27 mi)  
[A] 0 sqft (0 ac)

<< Reset Measure Tool

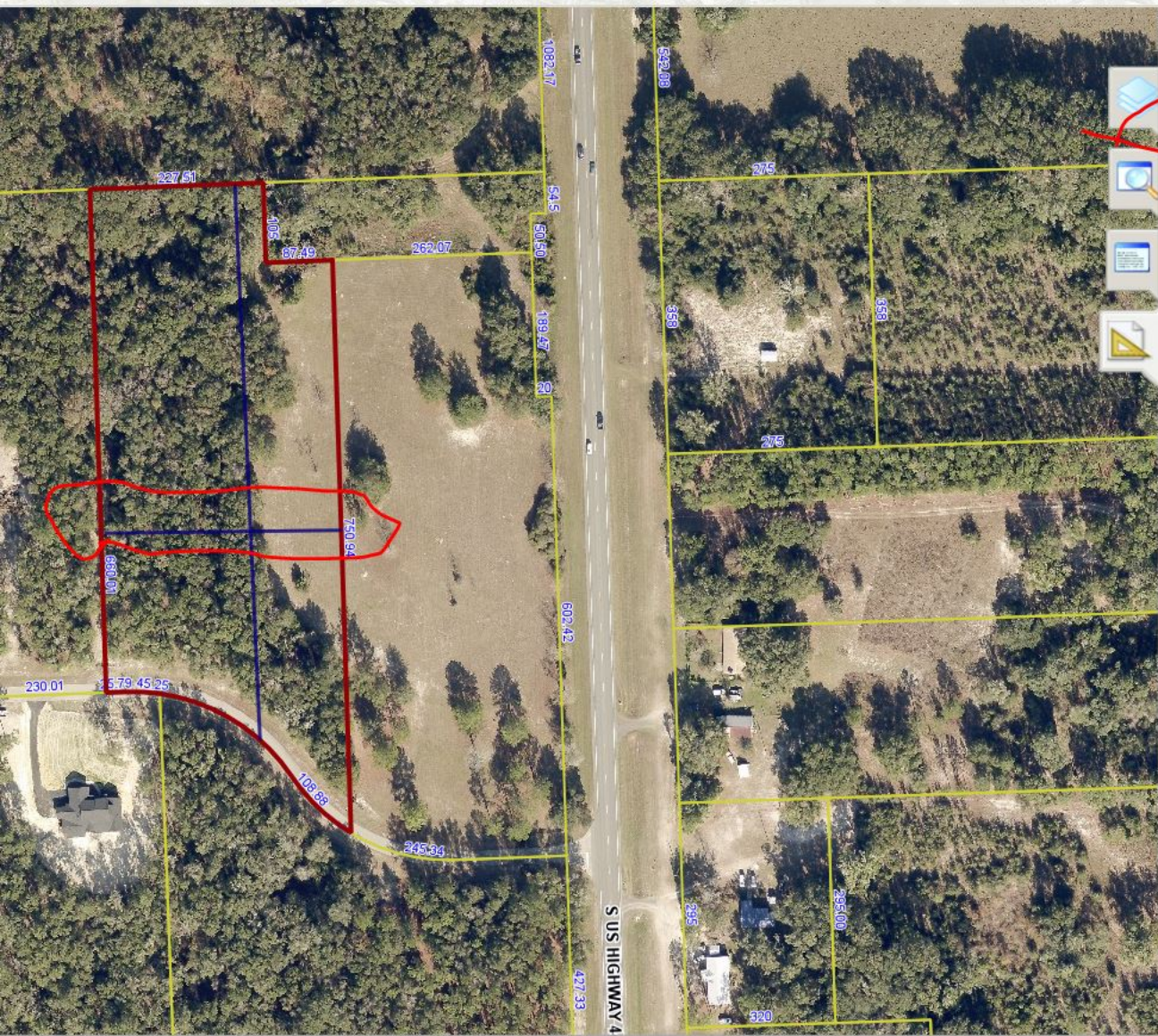
DISCLAIMER: All measurements and calculations are approximations and shall not be used in any legal documents.  
- For Certified maps and dimensions please contact the Property Appraiser's office.

Save Map Image

Print Map

#### Options

- Show Scalebar
- Auto-hide PRINT panel
- Show Zoom IN/OUT menu icons
- Auto-track GPS location



TOOLS

Measure Output

dbl-click or <shift>-click to auto-close polygon

Current Segment:

308.36 > 180.8

0.06 mi S89d13'32.8W

Running Length:

616.72 0.12 mi

Estimated Perimeter:

0 sqft

Estimated Area:

0 sqft

0 sqmi 0 ac

Traverse Report: (show: DD | KML)

p1) 82d36'38.8W, 29d52'04.2N  
 p2) 82d36'35.3W, 29d52'04.1N  
 s1) 308.36 >N89d13'32.8E  
 p1) 82d36'38.8W, 29d52'04.2N  
 s2) 308.36 >S89d13'32.8W  
 [P] 616.72 ft (0.12 mi)  
 [A] 0 sqft (0 ac)

<< Reset Measure Tool

DISCLAIMER: All measurements and calculations are approximations and should not be used in any legal documents.

- For Certified maps and dimensions please contact the Property Appraiser's office.

Save Map Image

Print Map

Options

- Show Scalebar
- Auto-hide PRINT panel
- Show Zoom IN/OUT menu icons
- Auto-track GPS location