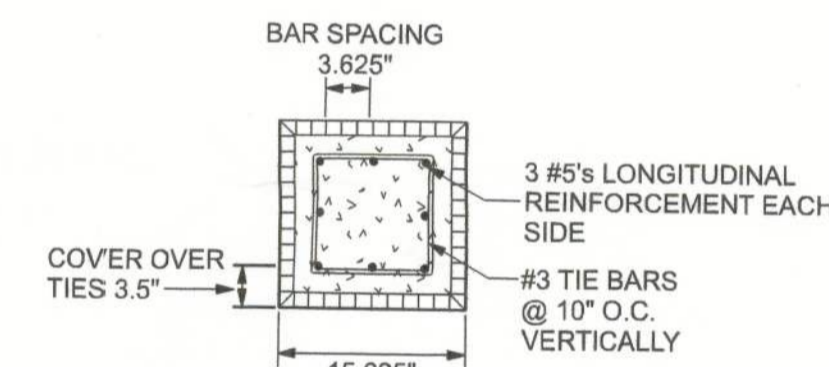
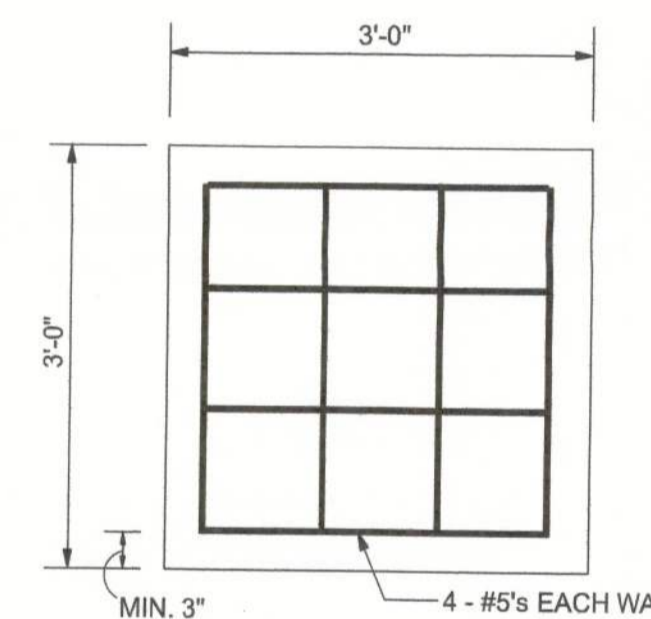


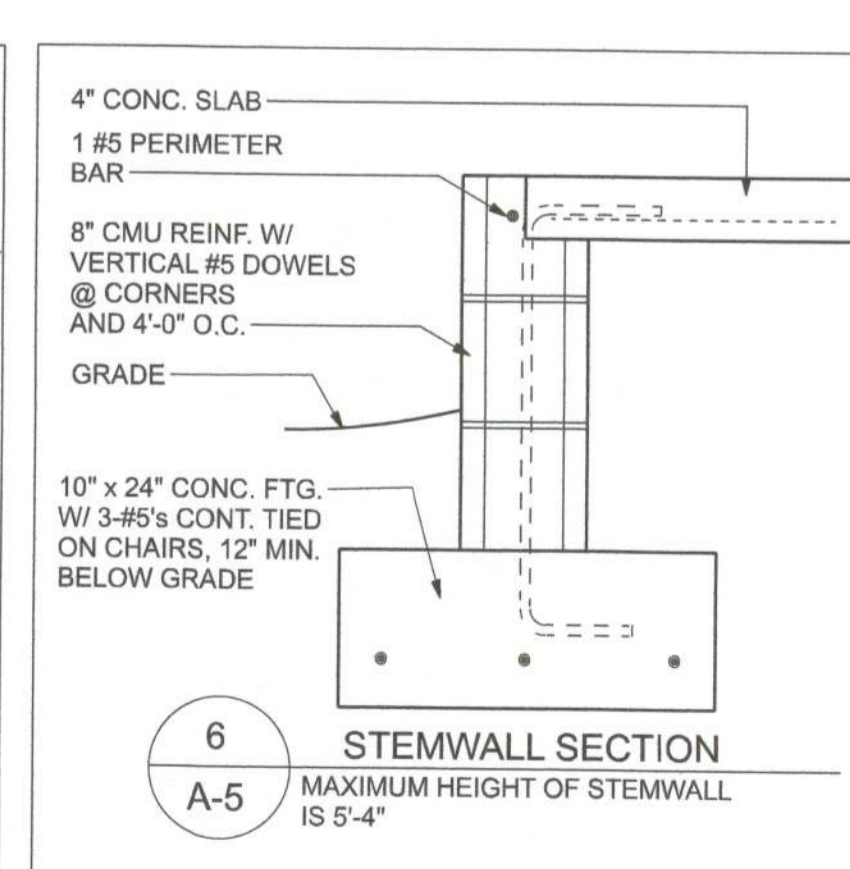
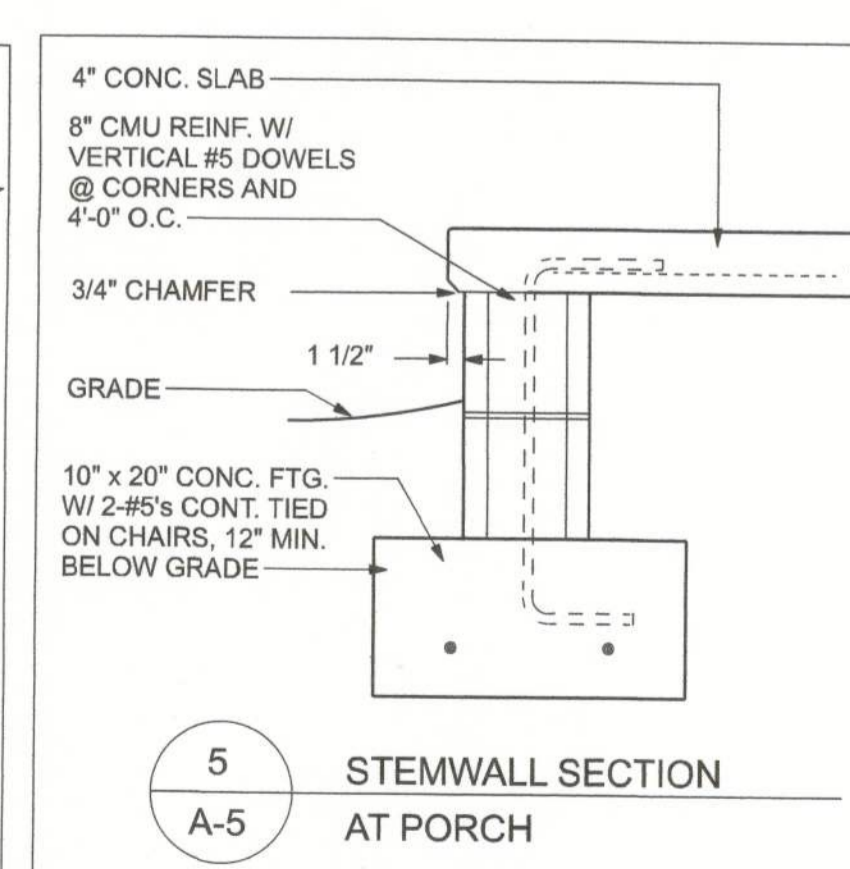
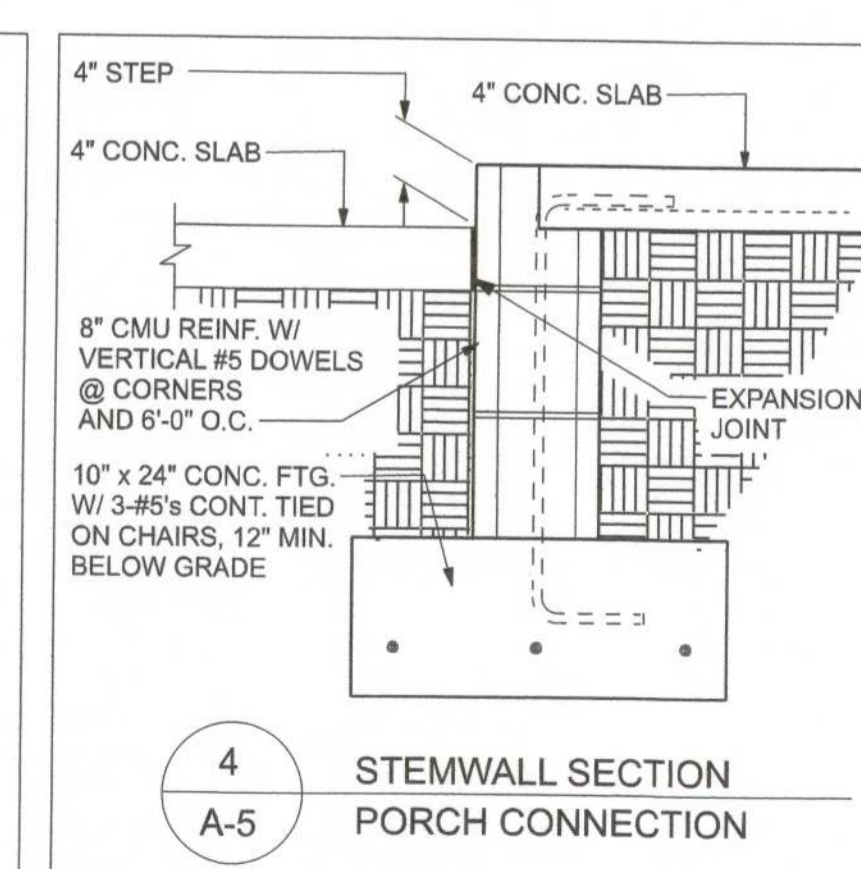
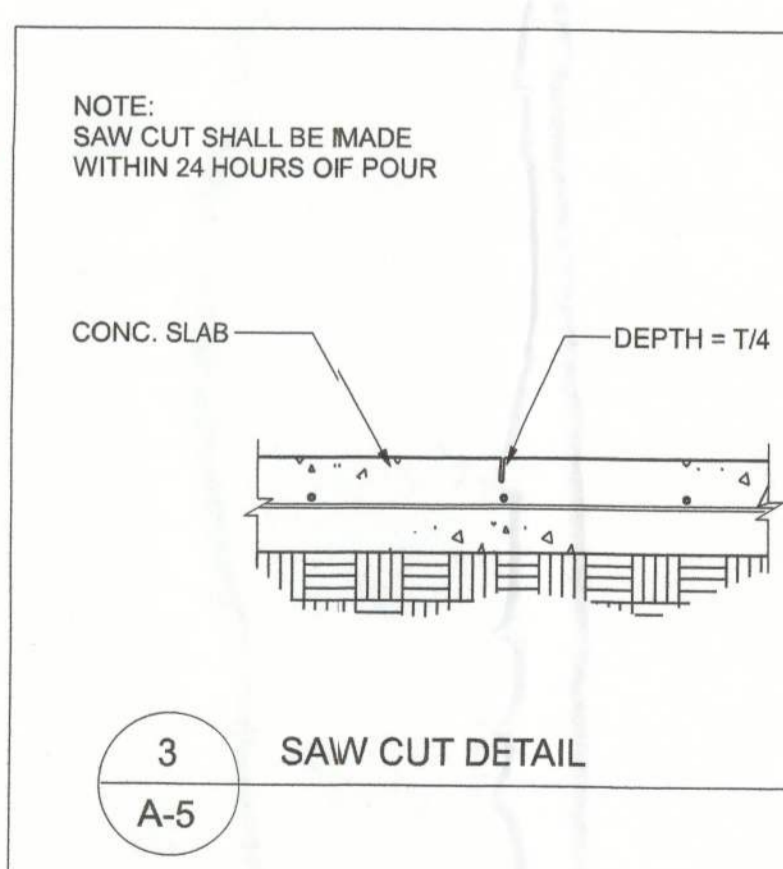
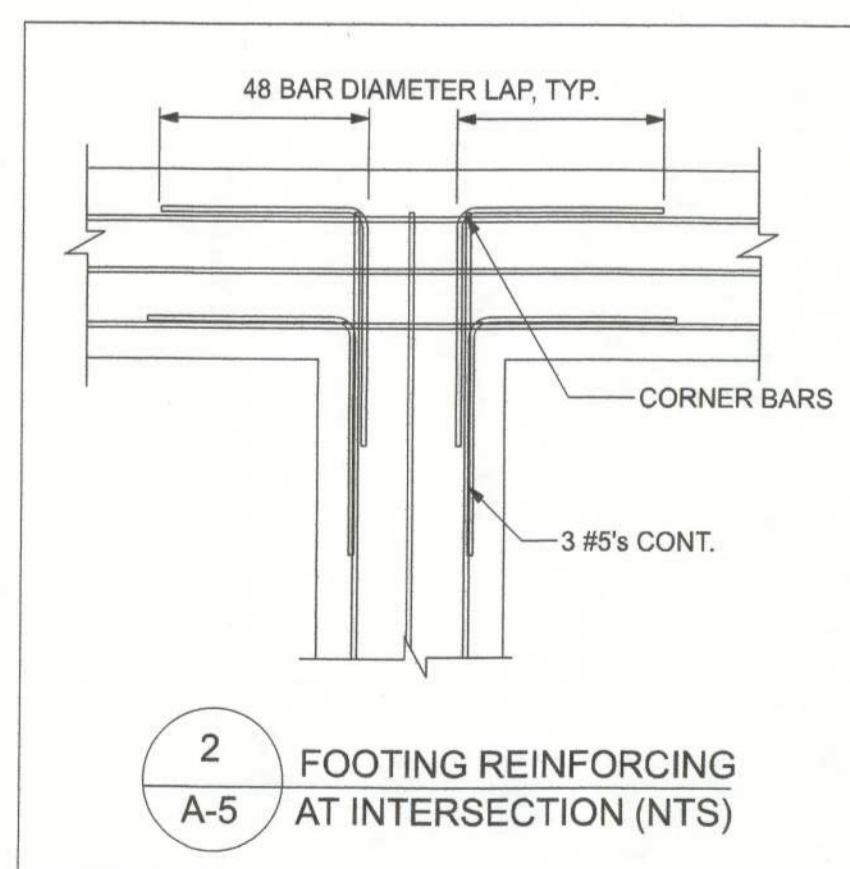
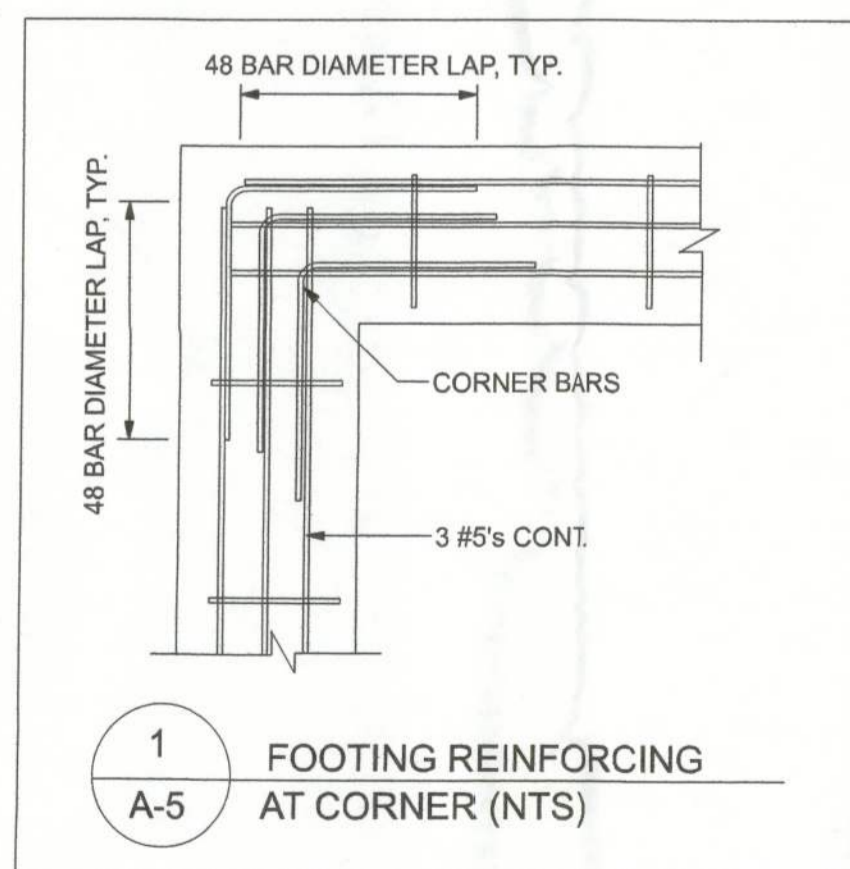
NOTE: FIXTURE LOCATIONS ARE SHOWN TO AID IN LOCATING ROUGH PLUMBING. ACTUAL FIXTURE LOCATIONS MAY DIFFER FROM THE PLANS.

FOUNDATION LAYOUT
SCALE: 1/4" = 1'-0"



PIER DETAIL
SCALE: 3/4" = 1'-0"
FOR PIERS 9'-4" OR LESS ABOVE TOP OF FOOTING

NOTE: ALL VERTICAL BARS IN PIERS MUST HAVE A CLEAR DISTANCE BETWEEN BARS OF AT LEAST 1.5 TIMES THE NOMINAL BAR DIAMETER, BUT NOT LESS THAN 1.5 INCHES.



NOTE: DETAILS MAY NOT DEPICT ACTUAL STEMWALL HEIGHT. CONTRACTOR SHALL VERIFY FINISHED FLOOR ELEVATION AND STEMWALL HEIGHT IN FIELD.

REVISIONS	BY	DESCRIPTION

DESIGN BY:
TRADEMARK Construction Group, Inc.

CERTIFIED GENERAL CONTRACTOR
COC1514780

163 SW MIDTOWN PL.
STE 101
LAKE CITY, FL 32025
(386)755-5254

CES
Crows Engineering Services, LLC

CERTIFICATE OF AUTHORIZATION
NO. 28022

349 SW CREWS FARM TERRACE
LAKE CITY, FL 32025
PHONE: 386.623.4303

ALAN CREWS
LICENSED PROFESSIONAL ENGINEER
No. 65592
STATE OF FLORIDA
Brett A. Crews, P.E. 65592

DRAWN BY:
TM

APPROVED BY:
BC

JACOB RESIDENCE

FOUNDATION PLAN

PROJECT NO.:
R22.009

SHEET:
A-5