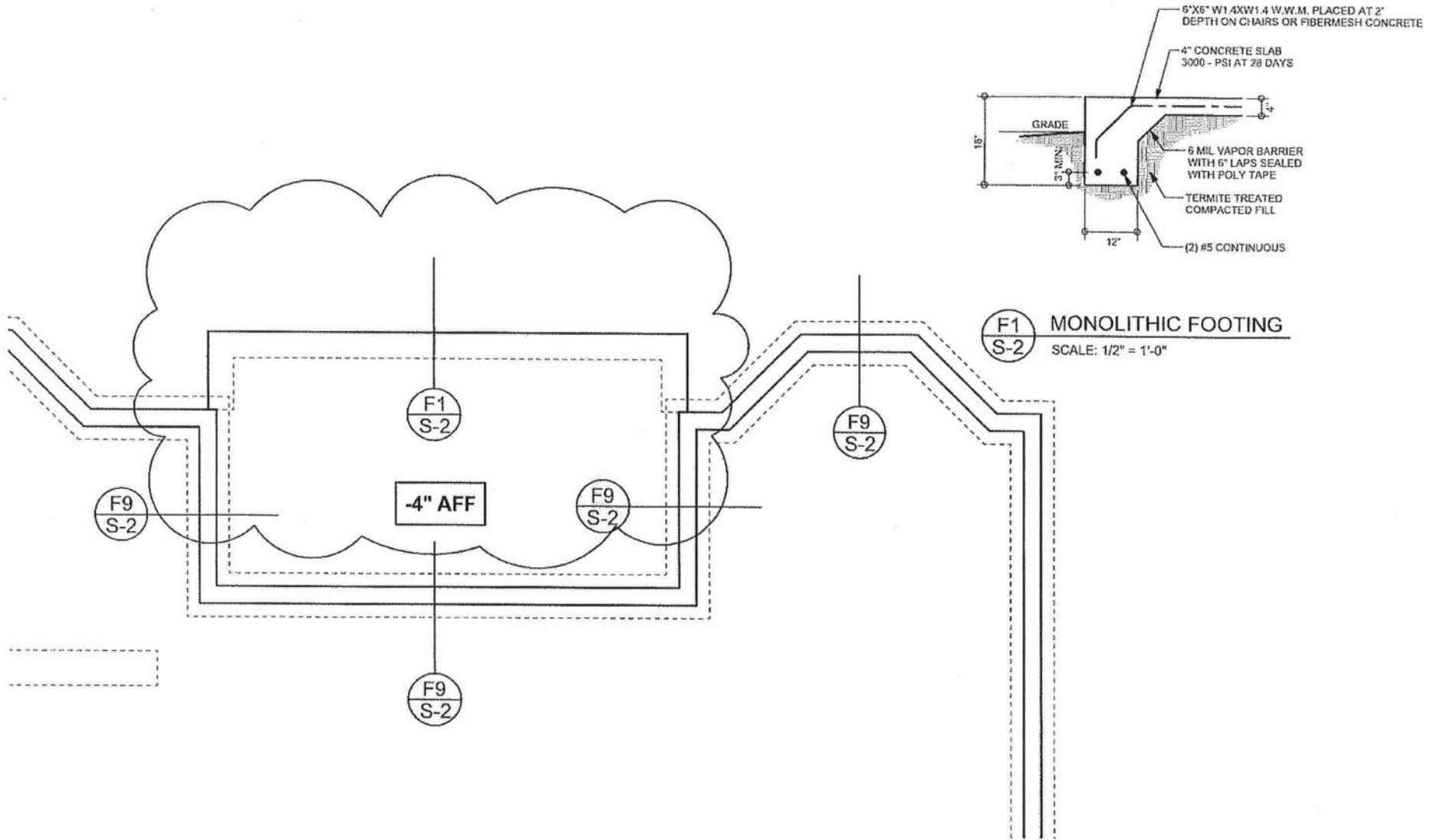


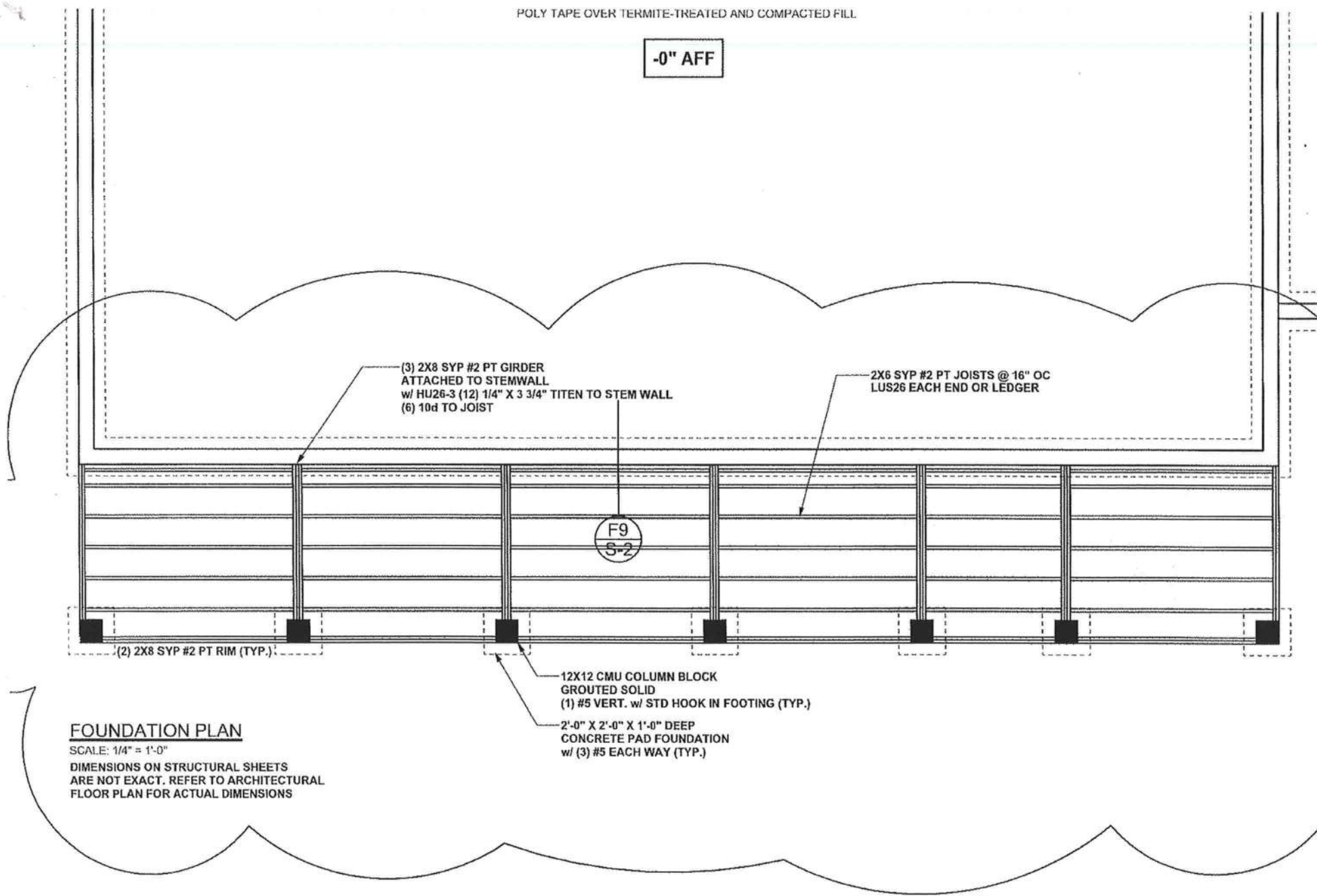
29487



POLY TAPE OVER TERMITE-TREATED AND COMPACTED FILL

-0" AFF

02/04/2008 05:49 FAX



(3) 2X8 SYP #2 PT GIRDER
ATTACHED TO STEMWALL
w/ HU26-3 (12) 1/4" X 3 3/4" TITEN TO STEM WALL
(6) 10d TO JOIST

2X6 SYP #2 PT JOISTS @ 16" OC
LUS26 EACH END OR LEDGER

F9
S-2

(2) 2X8 SYP #2 PT RIM (TYP.)

12X12 CMU COLUMN BLOCK
GROUTED SOLID
(1) #5 VERT. w/ STD HOOK IN FOOTING (TYP.)

2'-0" X 2'-0" X 1'-0" DEEP
CONCRETE PAD FOUNDATION
w/ (3) #5 EACH WAY (TYP.)

FOUNDATION PLAN

SCALE: 1/4" = 1'-0"
DIMENSIONS ON STRUCTURAL SHEETS
ARE NOT EXACT. REFER TO ARCHITECTURAL
FLOOR PLAN FOR ACTUAL DIMENSIONS