











CODE INFORMATION

CODE VERSION	REV 2020 THE CARPORTS ANYWHERE 2.16
MANUFACTURER	CARPORTS ANYWHERE
BUILDING TYPE	DETACHED STRUCTURE
CONSTRUCTION TYPE	4-8
RISK CATEGORY	1
FIRE PROTECTION	1
THE SUPPLEMENTARY SYSTEM	1
OCCUPANCY	1
BASED WIND SPEED	140-150 mph
ENCLOSURE	1
INTERNAL PRESSURE COEFFICIENT	+/- 0.8
IMPORTANCE FACTOR	1.0
ROOF RAIN LOAD	10 psf
ROOF LIVE LOAD	10 psf
FLOOR DEAD LOAD	10 psf
FLOOR LIVE LOAD	10 psf
TR. WINDING OF WALLS, FLOOR, ROOF	N/A
LOADS FOR BELIEVING ROOF	1
ADDITIONAL PROTECTION LOADS	NO
GROUND PROTECTION	NO

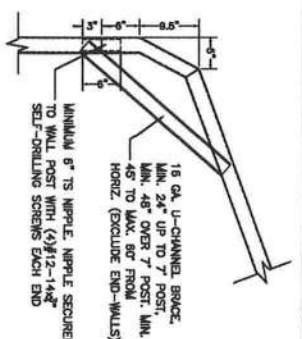
REVISIONS

REV	DESCRIPTION	DATE	BY

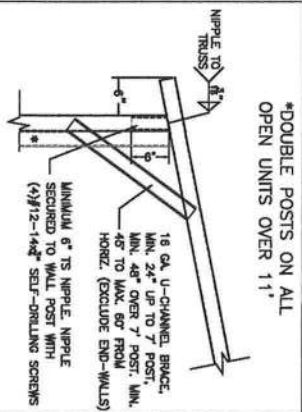
Design By: MFB  
Date: 5/27/20  
Location: FLORIDA

GENERAL: OPEN GENERIC ENGINEERING

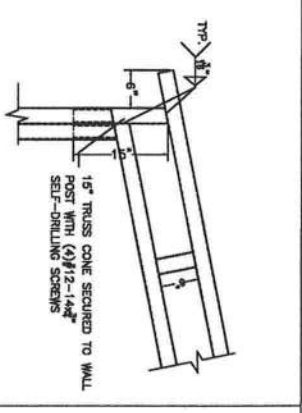
1. THE BUILDING IS COVERED FROM THE WIND EXPOSURE.
2. THE BUILDING IS COVERED FROM THE WIND EXPOSURE.
3. ALL STEEL FILING CONNECTIONS ARE TO BE DONE IN ACCORD WITH A CURRENT WINDLOAD.
4. ALL STEEL CONNECTIONS ARE TO BE DONE IN ACCORD WITH A CURRENT WINDLOAD.
5. ALL STEEL CONNECTIONS ARE TO BE DONE IN ACCORD WITH A CURRENT WINDLOAD.
6. ALL STEEL CONNECTIONS ARE TO BE DONE IN ACCORD WITH A CURRENT WINDLOAD.
7. CONCRETE CONNECTIONS ARE TO BE DONE IN ACCORD WITH A CURRENT WINDLOAD.
8. ALL STEEL CONNECTIONS ARE TO BE DONE IN ACCORD WITH A CURRENT WINDLOAD.
9. ALL STEEL CONNECTIONS ARE TO BE DONE IN ACCORD WITH A CURRENT WINDLOAD.
10. ALL STEEL CONNECTIONS ARE TO BE DONE IN ACCORD WITH A CURRENT WINDLOAD.



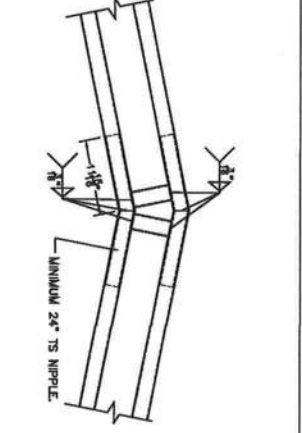
BOW RAFTER TO POST CONNECTION DETAIL



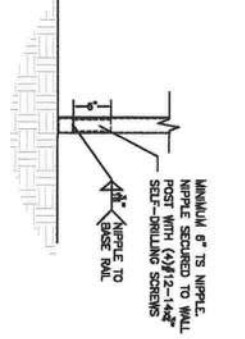
BOX EAVE RAFTER TO POST CONNECTION DETAIL



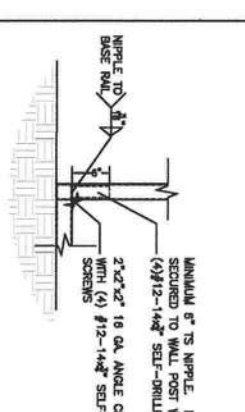
40' BOX EAVE RAFTER TO POST CONNECTION DETAIL



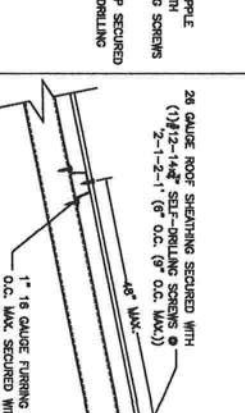
TRUSSED RAFTER CONNECTION DETAIL



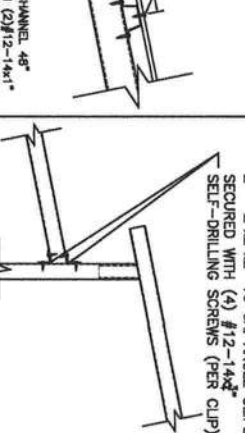
POST TO BASE RAIL CONNECTION



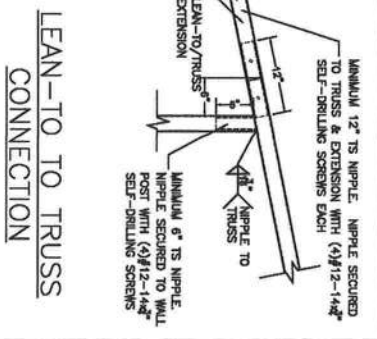
END POST TO BASE RAIL CONNECTION



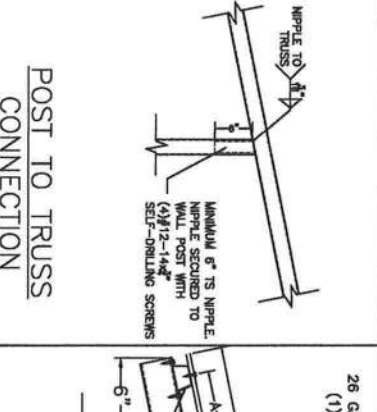
ROOF PANEL CONNECTION VERTICAL SHEATHING OPTION



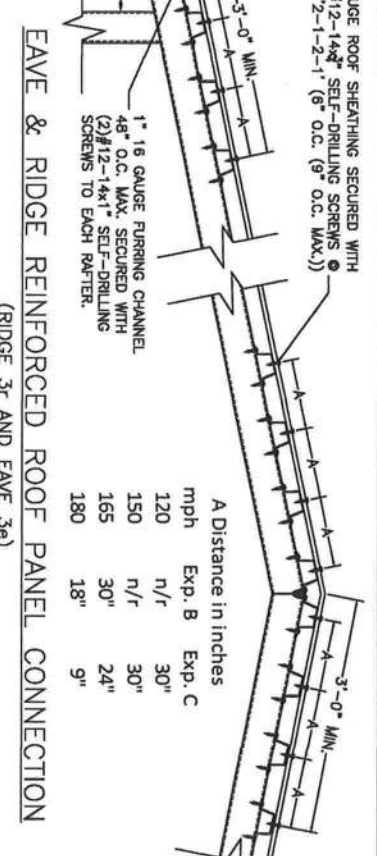
LEAN-TO TO TRUSS CONNECTION



LEAN-TO TO TRUSS CONNECTION



POST TO TRUSS CONNECTION



EAVE & RIDGE REINFORCED ROOF PANEL CONNECTION (RIDGE 3r AND EAVE 3e)

PRINTED COPIES OF THIS DOCUMENT ARE NOT CONSIDERED SIGNED AND SEALED AND THE SHA AUTHENTICATION CODE MUST BE VERIFIED ON ANY ELECTRONIC COPIES

DETAILS

PRINTED COPIES OF THIS DOCUMENT ARE NOT CONSIDERED SIGNED AND SEALED AND THE SHA AUTHENTICATION CODE MUST BE VERIFIED ON ANY ELECTRONIC COPIES



CODE INFORMATION

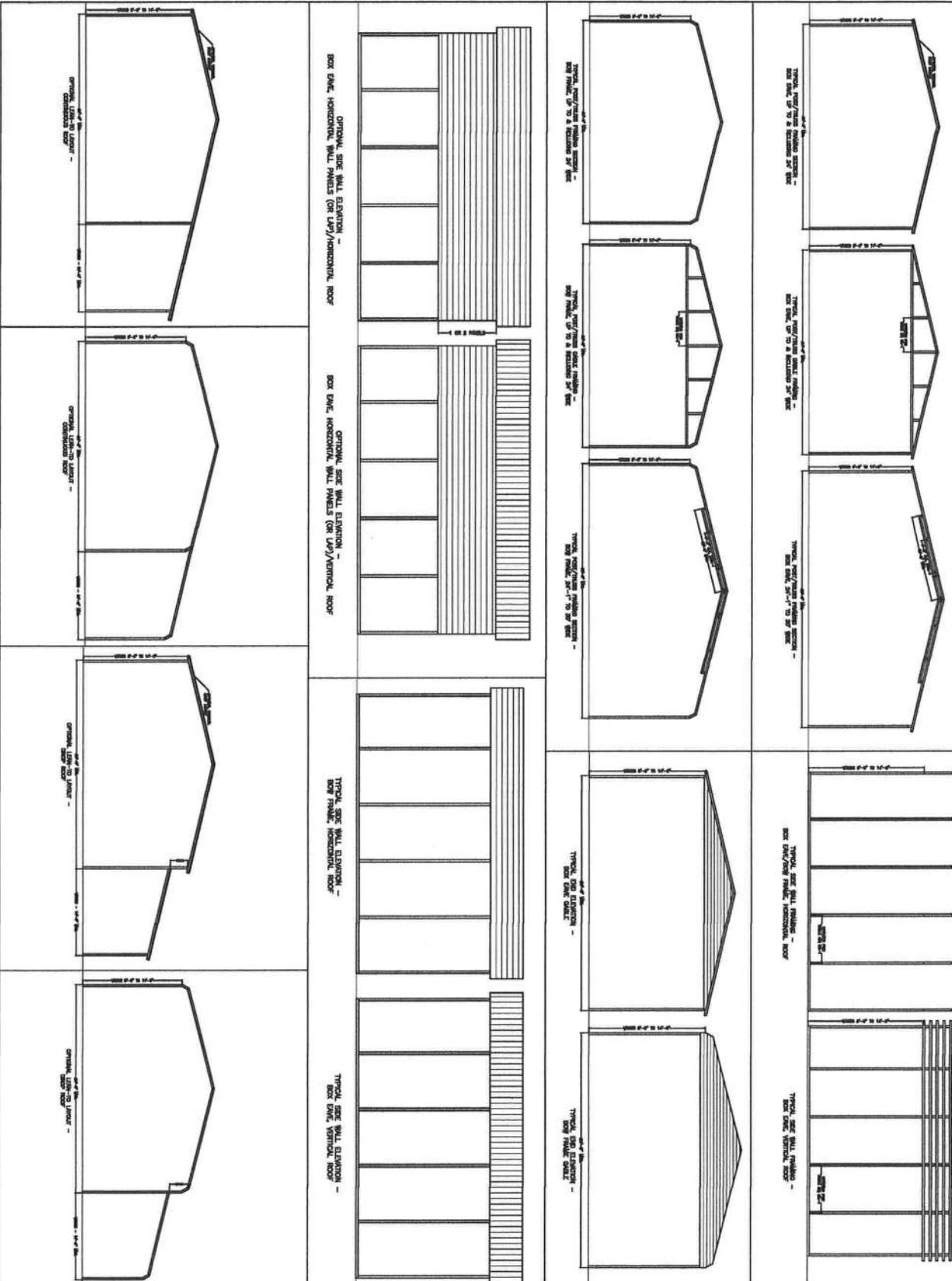
CODE VERSION	PER 2020 PER 60000, DEC 7-18
UNIFORM ACT/CHAPTER	CHAPTER 60000
BUILDING TYPE	UTILITY STRUCTURE
CONSTRUCTION TYPE	I-4
RISK CATEGORY	1
FIRE PROTECTION	NONE
FIRE SUPPRESSION SYSTEM	NONE
OCCUPANCY	UTILITY U
BASED WIND SPEED	140 150-160mph
EXPOSURE	1/2
ENCLOSURE	OPEN
INTERNAL PRESSURE COEFFICIENT	-1/-1 0.18
WINDBORNE LOAD	1.2
ROOF DEAD LOAD	10PSF
ROOF LIVE LOAD	10PSF OR 2000 NOUN LOAD
FLOOR DEAD LOAD	10PSF
FLOOR LIVE LOAD	10PSF
T <sub>1</sub> BASIS OF WALLS, FLOOR, ROOF	1/4
WALLS PER BUILDING	1
HORIZONTAL PROTECTION LEAF	NO
HORIZONTAL SHELTER LEAF	NO
SQUARE FOOTAGE	NO

REVISIONS

REV	DESCRIPTION	DATE	BY

Drawn By	MJB
Date	5/27/20
Location	FLORIDA
Project	OPEN GENERIC ENGINEERING

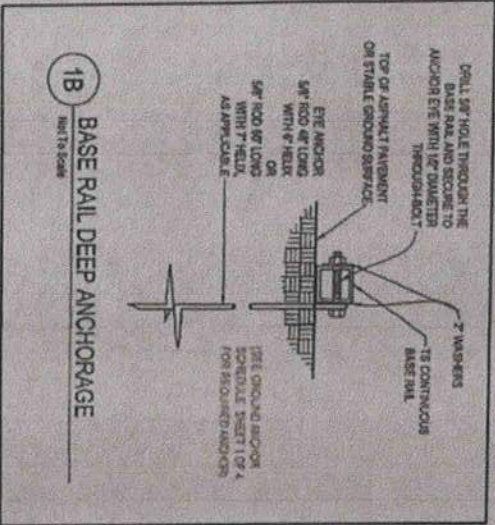
- GENERAL NOTES**
1. THIS BUILDING IS DESIGNED FROM THE PER DESIGN.
  2. ALL STEEL TUBING SHALL BE 60 KI PSI STEEL.
  3. PULVERULE, DETONATION RESISTANT/PROTECTIVE PROPERTY REQUIREMENTS ARE THE RESPONSIBILITY OF THE OWNER.
  4. #12-14" WALL SCHEDULING SECURED WITH 4#.
  5. TRUSSES @ 8' O.C. W/ 2" x 4" BRACES SECURED WITH #12-14x6/8" 8d12-DRILLING SCREWS.
  6. ALL STEEL TO BE WELDED CONNECTIONS, AND TO BE WELDED TO CONCRETE FOUNDATION.
  7. UNUSUAL 1/2" x 2" x 20'00" TUBULAR STRUCTURE.
  8. 1.2 OR 100L POUNDS IS 2.57x2.27 TUBE STEEL.
  9. PERMITS ARE 2.57x2.27 TUBE STEEL.



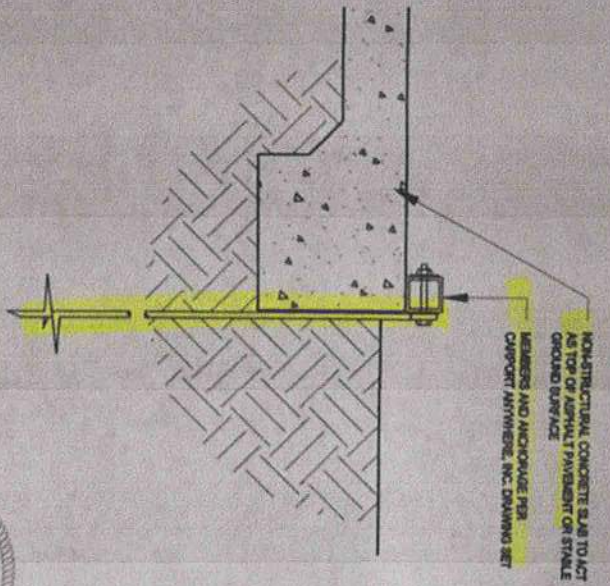
TITLE: LAYOUT VIEWS

Sheet: CA-3 OF 3

Muthawi T. Baddah P.E.  
Florida License #64000



**1B** BASE RAIL DEEP ANCHORAGE  
Not To Scale



**N. P. GEISLER, ARCHITECT**  
 MODIFICATIONS  
 SCALE: NONE

*Nicholas Paul Geisler*  
 25 SEPTEMBER 2020



**CARPORT ANYWHERE, INC.**  
 DETAIL MODIFICATIONS  
 P. O. BOX 776  
 STARKE, FLORIDA 32170

**N3**  
**NICHOLAS PAUL GEISLER ARCHITECT**  
N.C.A.R.B. Certified  
 1799 NW Brown Road  
 Lake City, FL 32055  
 386/385-4365

COMM. NR.:	2K2091	Digitally signed by N. P. GEISLER DN: CN = N. P. GEISLER C = US O = AR0007005 OU = ARCHITECT Date: 2020.09.25 12:04:57 -05'00'
DATE:	25SEP2020	
E-SEAL		