

FLORIDA DEPARTMENT OF
Business & Professional Regulation



[BCIS Home](#) | [Log In](#) | [User Registration](#) | [Hot Topics](#) | [Submit Surcharge](#) | [Stats & Facts](#) | [Publications](#) | [Contact Us](#) | [BCIS Site Map](#) | [Links](#) | [Search](#)


Product Approval
 User: Public User



OFFICE OF THE
 SECRETARY

[Product Approval Menu](#) > [Product or Application Search](#) > [Application List](#) > **Application Detail**

FL # FL19562-R9
Application Type Revision
Code Version 2023
Application Status Approved

Comments
 Archived



Product Manufacturer
Address/Phone/Email
 Andersen Corporation
 100 Fourth Avenue North
 Bayport, MN 55003
 (651) 264-5308
 alan.barstad@AndersenCorp.com

Authorized Signature
 Alan Barstad
 alan.barstad@AndersenCorp.com

Technical Representative
Address/Phone/Email

Quality Assurance Representative
Address/Phone/Email
 Alan Barstad
 100 Fourth Avenue North
 Bayport, MN 55003
 (651) 264-5308
 abarstad@andersencorp.com

Category
Subcategory

Windows
 Fixed

Compliance Method
 Evaluation Report from a Florida Registered Architect or a Licensed Florida Professional Engineer
 Evaluation Report - Hardcopy Received

Florida Engineer or Architect Name who developed the Evaluation Report Hermes F. Norero, P.E.
Florida License PE-73778
Quality Assurance Entity Window and Door Manufacturers Association-QA
Quality Assurance Contract Expiration Date 12/01/2030
Validated By Zachary R. Priest, P.E.
 Validation Checklist - Hardcopy Received

Certificate of Independence
[FL19562_R9_COI_Andersen_SS_2021-10-18.pdf](#)

Referenced Standard and Year (of Standard)	Standard	Year
	AAMA/WDMA/CSA 101/I.S. 2/A440	2011
	AAMA/WDMA/CSA 101/I.S. 2/A440	2017

ASTM E1886	2013
ASTM E1996	2017
TAS 201	1994
TAS 202	1994
TAS 203	1994

Equivalence of Product Standards
Certified By

Sections from the Code

Product Approval Method

Method 1 Option D

Date Submitted 12/14/2023
 Date Validated 12/27/2023
 Date Pending FBC Approval 01/02/2024
 Date Approved 02/13/2024

Summary of Products

FL #	Model, Number or Name	Description
19562.1	Renewal by Andersen Casement Window - Fixed (HVHZ) (Impact)	Renewal by Andersen Casement Window - Fixed (HVHZ) (Impact)
<p>Limits of Use Approved for use in HVHZ: Yes Approved for use outside HVHZ: Yes Impact Resistant: Yes Design Pressure: +60/-70 Other: See Installation Details and Evaluation Report for allowable sizes, configurations, installation requirements and limits of use.</p>		
19562.2	Renewal by Andersen Casement Window - Fixed (Non-HVHZ)(Non-Impact)	Renewal by Andersen Casement Window - Fixed (Non-HVHZ) (Non-Impact)
<p>Limits of Use Approved for use in HVHZ: No Approved for use outside HVHZ: Yes Impact Resistant: No Design Pressure: N/A Other: See Installation Instructions and Evaluation report for allowable design pressures, sizes, installation requirements and limits of use.</p>		
19562.3	Renewal by Andersen Fixed Window - (HVHZ)(Impact)	Renewal by Andersen Fixed Window - (HVHZ)(Impact)
<p>Limits of Use Approved for use in HVHZ: Yes Approved for use outside HVHZ: Yes Impact Resistant: Yes Design Pressure: N/A Other: See Installation Instructions and Evaluation report for allowable design pressures, sizes, installation requirements and limits of use.</p>		
19562.4	Renewal by Andersen Fixed Window - Full Frame (Non-HVHZ)(Non-Impact)	Renewal by Andersen Fixed Window - Full Frame (Non-HVHZ) (Non-Impact)
<p>Limits of Use Approved for use in HVHZ: No Approved for use outside HVHZ: Yes</p>		

<p>Installation Instructions FL19562_R9_II_AWD094_SS_2020-10-11.pdf Verified By: Hermes F. Norero, P.E. FL PE No. 73778 Created by Independent Third Party: Yes</p> <p>Evaluation Reports FL19562_R9_AE_PER6698_SS_2020-10-11.pdf Created by Independent Third Party: Yes</p>		
<p>Installation Instructions FL19562_R9_II_AWD292_SS_2021-06-15.pdf Verified By: Hermes F. Norero, P.E. Florida P.E. 73778 Created by Independent Third Party: Yes</p> <p>Evaluation Reports FL19562_R9_AE_PER7621_SS_2021-06-15.pdf Created by Independent Third Party: Yes</p>		
<p>Installation Instructions FL19562_R9_II_AWD092_SS_2020-10-11.pdf Verified By: Hermes F. Norero, P.E. FL PE No. 73778</p>		

<p>Impact Resistant: No Design Pressure: N/A Other: See Installation Instructions and Evaluation report for allowable design pressures, sizes, installation requirements and limits of use.</p>		<p>Created by Independent Third Party: Yes Evaluation Reports FL19562_R9_AE_PER66696_SS_2020-10-11.pdf Created by Independent Third Party: Yes</p>
19562.5	<p>Renewal by Andersen Fixed Window - Insert Frame (Non-HVHZ)(Non-Impact)</p>	<p>Renewal by Andersen Fixed Window - Insert Frame (Non-HVHZ)(Non-Impact)</p> <p>Installation Instructions FL19562_R9_II_AWD091_SS_2020-10-11.pdf Verified By: Hermes F. Norero, P.E. FL PE No. 73778 Created by Independent Third Party: Yes Evaluation Reports FL19562_R9_AE_PER66696_SS_2020-10-11.pdf Created by Independent Third Party: Yes</p>
19562.6	<p>Renewal by Andersen Fixed Window - Universal Frame (Non-HVHZ)(Non-Impact)</p>	<p>Renewal by Andersen Fixed Window - Universal Frame (Non-HVHZ)(Non-Impact)</p> <p>Installation Instructions FL19562_R9_II_AWD244_SS_2023-11-28.pdf Verified By: Hermes F. Norero, P.E. FL PE No. 73778 Created by Independent Third Party: Yes Evaluation Reports FL19562_R9_AE_PER8980_SS_2023-11-28.pdf Created by Independent Third Party: Yes</p>
<p>Limits of Use Approved for use in HVHZ: No Approved for use outside HVHZ: Yes Impact Resistant: No Design Pressure: N/A Other: See Installation Instructions and Evaluation report for allowable design pressures, sizes, installation requirements and limits of use.</p>		<p>Installation Instructions FL19562_R9_II_AWD244_SS_2023-11-28.pdf Verified By: Hermes F. Norero, P.E. FL PE No. 73778 Created by Independent Third Party: Yes Evaluation Reports FL19562_R9_AE_PER8980_SS_2023-11-28.pdf Created by Independent Third Party: Yes</p>

[Back](#)

[Next](#)

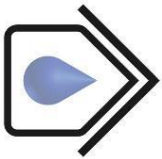
Contact Us :: 2601 Blair Stone Road, Tallahassee, FL 32399 Phone: 850-487-1824

The State of Florida is an AA/EEO employer. [Copyright 2007-2013 State of Florida.](#) :: [Privacy Statement](#) :: [Accessibility Statement](#) :: [Refund Statement](#)

Under Florida law, email addresses are public records. If you do not want your e-mail address released in response to a public-records request, do not send electronic mail to this entity. Instead, contact the office by phone or by traditional mail. If you have any questions, please contact 850.487.1395. *Pursuant to Section 455.275(1), Florida Statutes, effective October 1, 2012, licensees licensed under Chapter 455, F.S., must provide the Department with an email address if they have one. The emails provided may be used for official communication with the licensee. However, email addresses are public record. If you do not wish to supply a personal address, please provide the Department with an email address which can be made available to the public. To determine if you are a licensee under Chapter 455, F.S., please click [here](#).

Product Approval Accepts:





BUILDING DROPS

A Perfect Solution in Every Drop!
Certificate of Authorization: 29578

398 E. Dania Beach Blvd.
Suite 338
Dania Beach, FL 33004
954.399.8478 PH
954.744.4738 FX
contact@buildingdrops.com

Product Evaluation Report

of

Andersen Corporation
Renewal by Andersen Fixed Windows - Full Frame
(NON-HVHZ) (NON-IMPACT)

for

Florida Product Approval

FL# FL19562

Report No. 6696

Current Florida Building Code

Method: 1 – D (Engineering Evaluation)

Category: Windows

Sub – Category: Fixed Window

Product: Renewal by Andersen Fixed Windows - Full Frame

Material: (NON-HVHZ) (NON-IMPACT)

Fibrex® and PVC

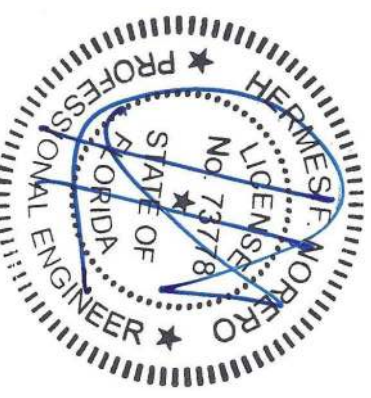
Product Dimensions: See Installation Instructions, AWD092

Prepared for:

Andersen Corporation
100 Fourth Avenue North
Bayport, MN 55003

Prepared by:

Hermes F. Norero, P.E.
Florida Professional Engineer # 73778
Date: 09/04/2020



Contents:

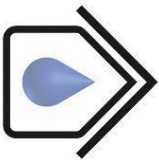
Evaluation Report Pages 1 – 4

Digitally signed by Hermes F Norero

Reason: I am approving this document

Date: 2020.10.11 18:23:45 +0200'

Hermes F. Norero, P.E.
Florida P.E. No. 73778



BUILDING DROPS

A Perfect Solution in Every Drop!

Certificate of Authorization: 29578

FL#: FL19562

Date: 09/04/20

Report No: 6696

Manufacturer: Andersen Corporation

Product Category: Windows

Product Sub-Category: Fixed Window

Compliance Method: State Product Approval Method (1)(d)

Product Name: Renewal by Andersen Fixed Windows - Full Frame
(NON-HVHZ) (NON-IMPACT)

Scope: This is a Product Evaluation Report issued by Hermes F. Norero, P.E. (FL # 73778) for **Andersen Corporation** based on Method 1d of the State of Florida Product Approval, Florida Department of Business and Professional Regulation - Florida Building Commission.

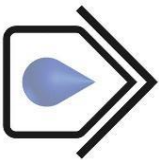
Hermes F. Norero, P.E. does not have nor will acquire financial interest in the company manufacturing or distributing the product or in any other entity involved in the approval process of the product named herein.

This product has been evaluated for use in locations adhering to the Current Florida Building Code.

See Installation Instructions **AWD092**, signed and sealed by Hermes F. Norero, P.E. (FL # 73778) for specific use parameters.

Limits of Use:

1. This product has been evaluated and is in compliance with the Current Florida Building Code, **excluding** the “High Velocity Hurricane Zone” (HVHZ).
2. Product anchors shall be as listed and spaced as shown on details. Anchor embedment into substrate material shall be beyond wall dressing or stucco.
3. When used in areas requiring wind borne debris protection this product complies with Chapter 16 of the Current Florida Building Code and **does** require an impact resistant covering.
4. Site conditions that deviate from the details of Installation Instructions **AWD092** require further engineering analysis by a licensed engineer or registered architect.
5. See Installation Instructions **AWD092** for size and design pressure limitations.



BUILDING DROPS

A Perfect Solution in Every Drop!

Certificate of Authorization: 29578

FL#: FL19562

Date: 09/04/20

Report No: 6696

Quality Assurance:

The manufacturer has demonstrated compliance of products in accordance with the Current Florida Building Code for manufacturing under a quality assurance program audited by an approved quality assurance entity through **Window and Door Manufacturers Association** (FBC Organization #: QUA2515).

Performance Standards:

The product described herein has been evaluated per:

- AAMA/WDMA/CSA 101/1.S.2/A440-11

Referenced Data:

1. Product Testing performed by **Architectural Testing**
(FBC Organization # TST1795)

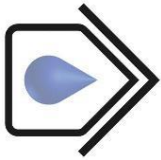
Report: B7527.01-201-47-R0	Dated: 05/02/12
Report: B7529.01-201-47-R1	Dated: 05/02/12
Report: B7528.01-201-47-R0	Dated: 05/02/12
Report: E9920.01-201-47-R0	Dated: 09/25/15
Report: E9919.01-201-47-R0	Dated: 09/25/15
Report: E9921.01-201-47-R0	Dated: 09/25/15
Report: B7529.02-201-47-R0	Dated: 05/02/12
Report: B7528.02-201-47-R0	Dated: 05/02/12
2. Quality Assurance
Window and Door Manufacturers Association
(FBC Organization #: QUA2515)

Installation:

Refer to Installation Instructions (**AWD092**) for anchor type, embedment, edge distance and anchor spacing details.

Design Pressure:

Refer to Installation Instructions (**AWD092**) for design pressures based on unit construction, size, and configuration.



BUILDING DROPS

A Perfect Solution in Every Drop!

Certificate of Authorization: 29578

FL#: FL19562

Date: 09/04/20

Report No: 6696

Equivalence of Test Standards:

Various test standards have been evaluated for differences in test methodology, if any, between tested editions of the test standards listed below and those editions referenced in the current Florida Building Code. Andersen Corporation has tested their products to the following test standard edition(s):

- 1) AAMA/WDMA/CSA 101/1.S.2/A440-08

Chapter 35 of the current Florida Building Code references the following editions of the above mentioned test standards:

- 1) AAMA/WDMA/CSA 101/1.S.2/A440-11

After review of the above mentioned referenced standards and editions, it has been found that the results and tests carried out meet the requirements for compliance. All referenced standards have been found to be equivalent.

10/20/2016 10:47 AM
 C:\Users\janderson\Documents\2017\2017_16063-TS-ALUMINUM\2017_16063-TS-ALUMINUM.dwg
 10/20/2016 10:47 AM

INSTALLATION NOTES:

1. INSTALLATION CLIPS: ONE (1) INSTALLATION ANCHOR CLIP IS REQUIRED AT EACH ANCHOR LOCATION SHOWN, EACH CLIP IS TO USE TWO (2) INSTALLATION ANCHORS.
2. THROUGH FRAME AND NAIL FIN: ONE (1) INSTALLATION ANCHOR IS REQUIRED AT EACH ANCHOR LOCATION SHOWN.
3. INSTALL INDIVIDUAL INSTALLATION ANCHORS WITHIN A TOLERANCE OF 1/2 INCH OF THE DEPICTED LOCATION IN THE ANCHOR LAYOUT DETAIL (I.E., WITHOUT CONSIDERATION OF TOLERANCES). TOLERANCES ARE NOT CUMULATIVE FROM ONE INSTALLATION ANCHOR TO THE NEXT.
4. **INSTALLATION CLIP:** FOR INSTALLATION THROUGH 1X BUCK TO CONCRETE/MASONRY, OR DIRECTLY INTO CONCRETE/MASONRY, USE TWO (2) 3/16 INCH HWH ITW TAPCON PER INSTALLATION CLIP OF SUFFICIENT LENGTH TO ACHIEVE 1 1/4 INCH MINIMUM EMBEDMENT AND SHALL MAINTAIN MINIMUM 2 EDGE DISTANCE.
5. **INSTALLATION CLIP:** FOR INSTALLATION INTO 2X BUCK USE TWO (2) #8 PAN HEAD WOOD SCREWS PER INSTALLATION CLIP OF SUFFICIENT LENGTH TO ACHIEVE 1 1/2 INCH MINIMUM EMBEDMENT INTO WOOD SUBSTRATE AND SHALL MAINTAIN MINIMUM 3/4" EDGE DISTANCE.
6. **INSTALLATION CLIP:** FOR INSTALLATION THROUGH METAL STUD USE TWO (2) #8 HWH GRADE 5 SELF-DRILLING OR SELF-TAPPING SCREWS PER INSTALLATION CLIP OF SUFFICIENT LENGTH TO ACHIEVE 3 THREADS MINIMUM PENETRATION BEYOND METAL FRAME SUBSTRATE AND SHALL MAINTAIN MINIMUM 3/4" EDGE DISTANCE.
7. **THROUGH FRAME:** FOR INSTALLATION INTO 2X BUCK USE #10 WOOD SCREWS OF SUFFICIENT LENGTH TO ACHIEVE 1 1/2 INCH MINIMUM EMBEDMENT INTO WOOD SUBSTRATE AND SHALL MAINTAIN MINIMUM 3/4" EDGE DISTANCE.
8. **THROUGH FRAME:** FOR INSTALLATION INTO METAL SUBSTRATES USE #10 HWH GRADE 5 SELF-DRILLING OR SELF-TAPPING SCREWS OF SUFFICIENT LENGTH TO ACHIEVE 3 THREADS MINIMUM PENETRATION BEYOND METAL FRAME SUBSTRATE AND SHALL MAINTAIN MINIMUM 3/4" EDGE DISTANCE.
9. **THROUGH FRAME:** FOR INSTALLATION THROUGH 1X BUCK TO CONCRETE/MASONRY, OR DIRECTLY INTO CONCRETE/MASONRY, USE ONE (1) 3/16 INCH ITW TAPCON OF SUFFICIENT LENGTH TO ACHIEVE 1 1/4 INCH MINIMUM EMBEDMENT AND SHALL MAINTAIN MINIMUM 2" EDGE DISTANCE.
10. **NAIL FIN:** FOR INSTALLATION INTO 2X BUCK USE #8 PAN HEAD WOOD SCREWS OF SUFFICIENT LENGTH TO ACHIEVE 1 1/2 INCH MINIMUM EMBEDMENT INTO WOOD SUBSTRATE AND SHALL MAINTAIN MINIMUM 3/4" EDGE DISTANCE.
11. **NAIL FIN:** FOR INSTALLATION INTO METAL SUBSTRATES USE #8 HWH GRADE 5 SELF-DRILLING OR SELF-TAPPING SCREWS OF SUFFICIENT LENGTH TO ACHIEVE 3 THREADS MINIMUM PENETRATION BEYOND METAL FRAME SUBSTRATE AND SHALL MAINTAIN MINIMUM 3/4" EDGE DISTANCE.
12. MINIMUM EMBEDMENT AND EDGE DISTANCE EXCLUDE WALL FINISHES, INCLUDING BUT NOT LIMITED TO STUCCO, FOAM, BRICK VENEER, AND SIDING.
13. INSTALLATION ANCHORS AND ASSOCIATED HARDWARE MUST BE MADE OF CORROSION RESISTANT MATERIAL OR HAVE A CORROSION RESISTANT COATING.
14. FOR HOLLOW BLOCK AND GROUT FILLED BLOCK, DO NOT INSTALL INSTALLATION ANCHORS INTO MORTAR JOINTS. EDGE DISTANCE IS MEASURED FROM FREE EDGE OF BLOCK OR EDGE OF MORTAR JOINT INTO FACE SHELL OF BLOCK.
15. INSTALLATION ANCHORS SHALL BE INSTALLED IN ACCORDANCE WITH ANCHOR MANUFACTURER'S INSTALLATION INSTRUCTIONS, AND ANCHORS SHALL NOT BE USED IN SUBSTRATES WITH STRENGTHS LESS THAN THE MINIMUM STRENGTH SPECIFIED BY THE ANCHOR MANUFACTURER.
16. INSTALLATION ANCHOR CAPACITIES FOR PRODUCTS HEREIN ARE BASED ON SUBSTRATE MATERIALS WITH THE FOLLOWING PROPERTIES:
 - A. WOOD - MINIMUM SPECIFIC GRAVITY OF 0.55.
 - B. CONCRETE - MINIMUM COMPRESSIVE STRENGTH OF 3000 PSI.
 - C. GROUT-FILLED CMU - UNIT STRENGTH CONFORMS TO ASTM C-90 WITH MINIMUM COMPRESSIVE STRENGTH OF 2000 PSI AND GROUT CONFORMS TO ASTM C 476, MINIMUM GROUT COMPRESSIVE STRENGTH OF 2000 PSI.
 - D. HOLLOW BLOCK CMU - UNIT STRENGTH CONFORMS TO ASTM C-90 WITH MINIMUM COMPRESSIVE STRENGTH OF 2000 PSI.
 - E. STEEL - MINIMUM YIELD STRENGTH OF 33 KSI. MINIMUM WALL THICKNESS OF 48 MILS (3/8 GAUGE).
 - F. ALUMINUM - MINIMUM WALL THICKNESS OF 1/8", 6063-T5 ALLOY OR BETTER.

ANDERSEN CORPORATION, INC

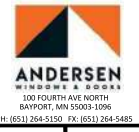
RENEWAL BY ANDERSEN FIXED WINDOWS - FULL FRAME (NON-HVHZ)(NON-IMPACT)

GENERAL NOTES:

1. THE PRODUCT SHOWN HEREIN IS DESIGNED AND MANUFACTURED TO COMPLY WITH THE CURRENT EDITION FLORIDA BUILDING CODE, EXCLUDING HVHZ. THE PRODUCT HAS BEEN EVALUATED TO THE FOLLOWING:
 - AAMA/WDMA/CSA 101/1.5.2/4440-11
2. ADEQUACY OF THE EXISTING STRUCTURAL CONCRETE/MASONRY, 2X AND METAL STUD FRAMING AS A MAIN WIND FORCE RESISTING SYSTEM CAPABLE OF WITHSTANDING AND TRANSFERRING APPLIED PRODUCT LOADS TO THE FOUNDATION IS THE RESPONSIBILITY OF THE ENGINEER OR ARCHITECT OF RECORD FOR THE PROJECT OF INSTALLATION.
3. 1X AND 2X BUCKS (WHEN USED) SHALL BE DESIGNED AND ANCHORED TO PROPERLY TRANSFER ALL LOADS TO THE STRUCTURE. BUCK DESIGN AND INSTALLATION IS THE RESPONSIBILITY OF THE ENGINEER OR ARCHITECT OF RECORD FOR THE PROJECT OF INSTALLATION.
4. THE INSTALLATION DETAILS DESCRIBED HEREIN ARE GENERIC AND MAY NOT REFLECT ACTUAL CONDITIONS FOR A SPECIFIC SITE. IF SITE CONDITIONS CAUSE INSTALLATION TO DEVIATE FROM THE REQUIREMENTS DETAILED HEREIN, A LICENSED ENGINEER OR ARCHITECT SHALL PREPARE SITE SPECIFIC DOCUMENTS FOR USE WITH THIS DOCUMENT.
5. APPROVED IMPACT PROTECTIVE SYSTEM IS REQUIRED TO PROTECT THIS PRODUCT IN AREAS REQUIRING IMPACT RESISTANCE.
6. WINDOW FRAME MATERIAL: **FIBREX®** AND PVC.
7. GLASS MEETS THE REQUIREMENTS OF ASTM E1300. SEE GLAZING DETAILS ON SHEET 3.
8. DESIGNATIONS "X" AND "O" STAND FOR THE FOLLOWING:
 X: OPERABLE PANEL
 O: FIXED PANEL

TABLE OF CONTENTS	
SHEET	SHEET DESCRIPTION
1	GENERAL & INSTALLATION NOTES
2	ELEVATIONS & ANCHOR LAYOUTS
3	THROUGH FRAME & NAIL FIN INSTALLATION DETAILS & GLAZING DETAIL
4	NAIL FIN INSTALLATION DETAILS
5	CLIP INSTALLATION DETAILS
6	QUALIFIED SHAPES

DESIGN PRESSURE RATING			
SIZE	DESIGN PRESSURE (DP/PG)	INSTALLATION OPTIONS	INSTALLATION SUBSTRATES
48x48	+/- 50 PSF	Through Frame & Optional Nail Fin	Wood, Concrete/Masonry, Metal Stud
		Installation Clip	Wood, Concrete/Masonry, Metal Stud
84x84	+/- 35 PSF	Through Frame & Optional Nail Fin	Wood, Concrete/Masonry, Metal Stud
		Installation Clip	Wood, Concrete/Masonry, Metal Stud
84x84	+/- 50 PSF	Nail Fin Only	Wood or Metal Stud Only
		Through Frame & Nail Fin Required	Wood or Metal Stud Only
106x62	+/- 35 PSF	Through Frame & Optional Nail Fin	Wood, Concrete/Masonry, Metal Stud
		Installation Clip	Wood, Concrete/Masonry, Metal Stud
106x62	+/- 50 PSF	Nail Fin Only	Wood Or Metal Stud Only
		Through Frame & Nail Fin Required	Wood or Metal Stud Only
106x62	+/- 50 PSF	Through Frame & Optional Nail Fin	Wood, Concrete/Masonry, Metal Stud
		Installation Clip	Wood, Concrete/Masonry, Metal Stud

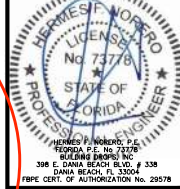


TITLE: RENEWAL BY ANDERSEN FIXED WINDOWS - FULL FRAME (NON-HVHZ)(NON-IMPACT)
GENERAL & INSTALLATION NOTES
PREPARED BY: BUILDING DROPS, INC.
 398 E. DANIA BEACH BLVD., STE. 138
 DANIA BEACH, FL 33004
 PH: (954) 944-4738
 FAX: (954) 944-4738
 WWW: www.buildingdrops.com

REMARKS	BY	DATE
REV. FOR PG50 UNITS	MS	2.15.16
FBC UPDATE	SM	2.17.18
7TH FBC CODE CHANGE	SR	3.24.20

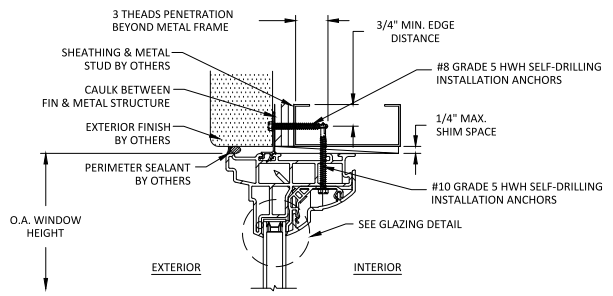
THE INSTALLATION DETAILS DESCRIBED HEREIN ARE GENERIC AND MAY NOT REFLECT ACTUAL CONDITIONS FOR A SPECIFIC SITE. IF SITE CONDITIONS CAUSE INSTALLATION TO DEVIATE FROM THE REQUIREMENTS DETAILED HEREIN, A LICENSED ENGINEER OR ARCHITECT SHALL PREPARE SITE SPECIFIC DOCUMENTS FOR USE WITH THIS DOCUMENT.

Digitally signed by Hermes F. Norero
 Reason: I am approving this document
 Date: 2020.10.11 16:58:26 -0200



FL #: FL19562
DATE: 12.17.15
DWG. BY: SM **CHK. BY:** MSS
SCALE: NTS
DWG. #: AWD092
SHEET: 1 OF 6

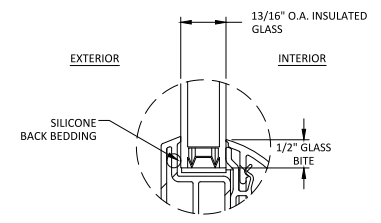
10/17/2016 9:57 AM
 C:\Users\janderson\Documents\2015\2015_08_04_10_17_2016\2015_08_04_10_17_2016.dwg
 10/17/2016 9:57 AM



A
3
VERTICAL SECTION
HEAD - METAL FRAME SUBSTRATE
NAIL FIN

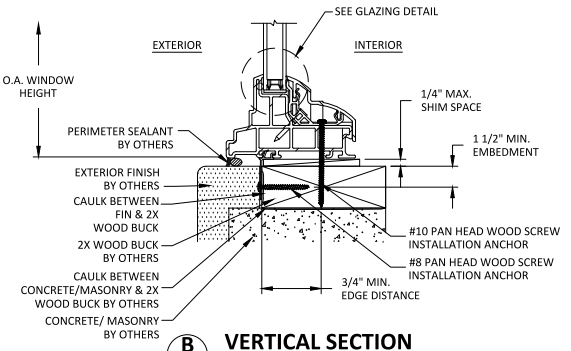
NAIL FIN/FLANGE IS REVERSIBLE, SEE ORIENTATION DIFFERENCE IN DETAIL A AND B

NOTE: NAIL FIN IS OPTIONAL FOR ALL UNITS AT DP (PG) 35 OR LESS AND 48" X 48" UNITS AT DP (PG) 50. ALL OTHER UNITS REQUIRE BOTH THROUGH FRAME AND NAIL FIN ANCHORAGE.

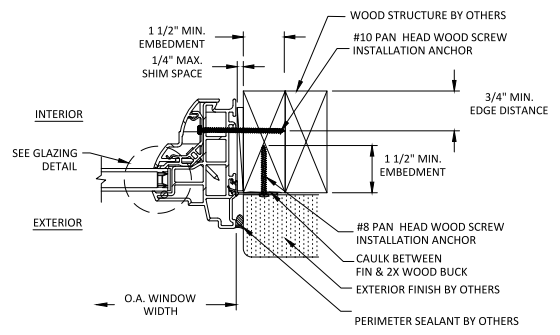


GLAZING DETAIL

- NOTE:
1. ALL GLAZING MEETS SAFETY GLAZING REQUIREMENTS AS PER CH 24 OF THE FBC.
 2. SETTING BLOCK DUROMETER HARDNESS OF 70-90 (SHORE A) AS REFERENCED IN CHAPTER 24.
 3. SETTING BLOCKS TO BE LOCATED AT 1/4 SPAN LENGTH FOR GLASS WIDER THAN 36" AS PER CHAPTER 24. D.L.O. MAY NOT EXCEED MAX DIMENSIONS SHOWN IN ELEVATIONS.



B
3
VERTICAL SECTION
SILL - 2X WOOD BUCK
NAIL FIN



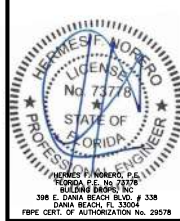
C
3
HORIZONTAL SECTION
JAMB - WOOD BUCK
NAIL FIN



TITLE: RENEWAL BY ANDERSEN FINED WINDOWS - FULL FRAME (NON-H/HS/NO/IMPACT)
PREPARED BY: BUILDING DROPS, INC.
398 E. DANIA BEACH BLVD., STE. 138
DANIA BEACH, FL 33004
PHONE: (954) 744-4758
FAX: (954) 744-4758
WEB: www.buildingdrops.com

REMARKS	BY	DATE
REV. FOR PG50 UNITS	MS	2.15.16
FBC UPDATE	SM	2.17.18
7TH FBC CODE CHANGE	SR	3.24.20

THE INSTALLATION DETAILS DESCRIBED HEREIN ARE GENERAL AND MAY NOT REFLECT ACTUAL CONDITIONS FOR A SPECIFIC SITE. IF SITE CONDITIONS REQUIRE MODIFICATION TO DEVIATE FROM THE REQUIREMENTS DETAILED HEREIN, A LICENSED ENGINEER OR ARCHITECT SHALL PREPARE SITE SPECIFIC DOCUMENTS FOR USE WITH THIS DOCUMENT.



FL #: **FL19562**

DATE: **12.17.15**

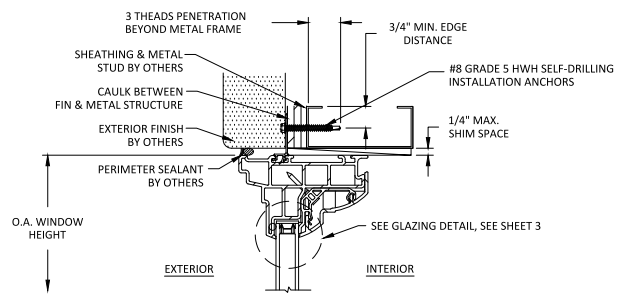
DWG. BY: **SM** CHK. BY: **MSS**

SCALE: **NTS**

DWG. #: **AWD092**

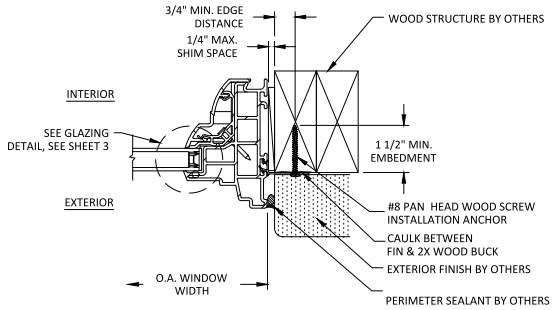
SHEET:

10/27/2010 0.07 P.M. C:\BUILDING\DRAWINGS\AWD092.dwg USER: D:\Users\jg\Documents\Projects\AWD092.dwg

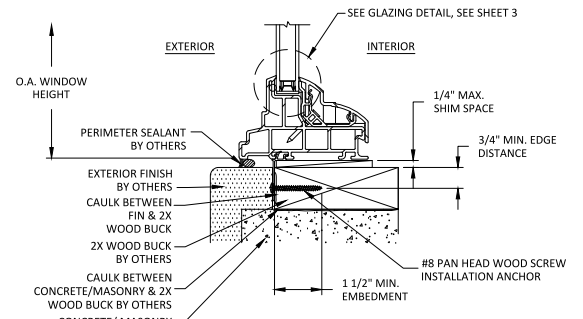


A
4
VERTICAL SECTION
HEAD - METAL FRAME SUBSTRATE
NAIL FIN

NAIL FIN/FLANGE IS REVERSIBLE. SEE ORIENTATION DIFFERENCE IN DETAIL A AND B



C
4
HORIZONTAL SECTION
JAMB - WOOD BUCK
NAIL FIN



B
4
VERTICAL SECTION
SILL - 2X WOOD BUCK
NAIL FIN

ANDERSEN
WINDOWS & DOORS
100 FOURTH AVE NORTH
BAYPORT, MN 55003-1096
PH: (651) 264-5150 FX: (651) 264-5485

TITLE: RENEWAL BY ANDERSEN FINED WINDOWS - NAIL FIN FRAME (NON-H/HS/NO/IMPACT) INSTALLATION CLIP DETAILS
PREPARED BY: BUILDING DROPS, INC.
398 E. DANA BEACH BLVD., STE. 138
DANA BEACH, FL 33404
PH: (561) 424-4728
FAX: (561) 424-4728
WEB: www.buildingdrops.com

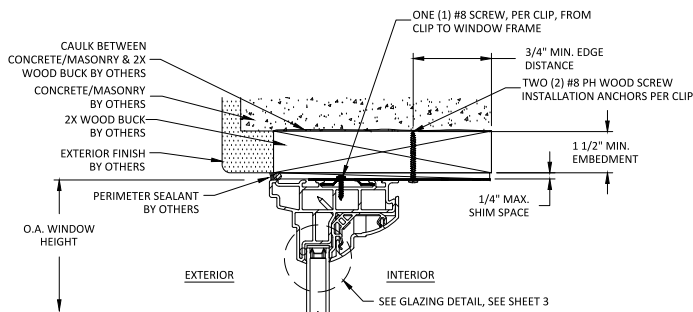
REMARKS	BY	DATE
REV. FOR PG50 UNITS	MS	2.15.16
FBC UPDATE	SM	2.17.18
7TH FBC CODE CHANGE	SR	3.24.20

THE INSTALLATION DETAILS DESCRIBED HEREIN ARE GENERAL AND MAY NOT REFLECT ACTUAL CONDITIONS FOR A SPECIFIC SITE. IF SITE CONDITIONS REQUIRE MODIFICATION TO DEVOLVE FROM THE REQUIREMENTS DETAILED HEREIN, A LICENSED ENGINEER OR ARCHITECT SHALL PREPARE SITE SPECIFIC DOCUMENTS FOR USE WITH THIS DOCUMENT.

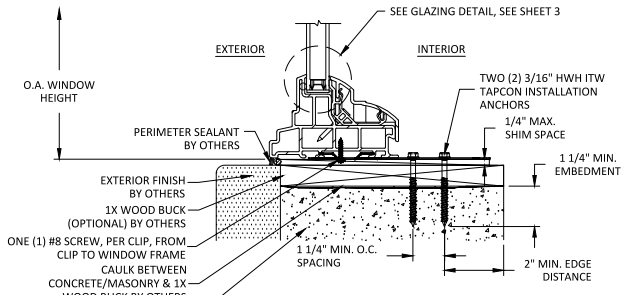
JAMES J. ROMERO, P.E.
FLORIDA P.E. NO. 73778
BUILDING ENGINEER, INC.
398 E. DANA BEACH BLVD., # 338
DANA BEACH, FL 33404
FBPE CERT. OF AUTHORIZATION No. 29578

FL #: **FL19562**
DATE: **12.17.15**
DWG. BY: **SM** CHK. BY: **MSS**
SCALE: **NTS**
DWG. #: **AWD092**
SHEET:

10/17/2016 9:57 AM
 C:\Users\janderson\Documents\2016\2016 - 08 - 08.dwg
 10/17/2016 9:57 AM
 C:\Users\janderson\Documents\2016\2016 - 08 - 08.dwg



A
5
VERTICAL SECTION
HEAD - 2X WOOD BUCK
INSTALLATION CLIP



B
5
VERTICAL SECTION
SILL - 1X WOOD ON CONCRETE/MASONRY
INSTALLATION CLIP

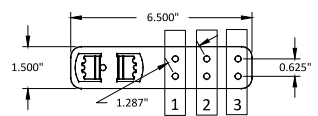
INSTALLATION CLIP ANCHOR REQUIREMENTS:

WOOD SUBSTRATE: USE TWO #8 PAN HEAD WOOD SCREWS PER CLIP, IN ROW NUMBER ONE OF PREDRILLED HOLES SHOWN BELOW.

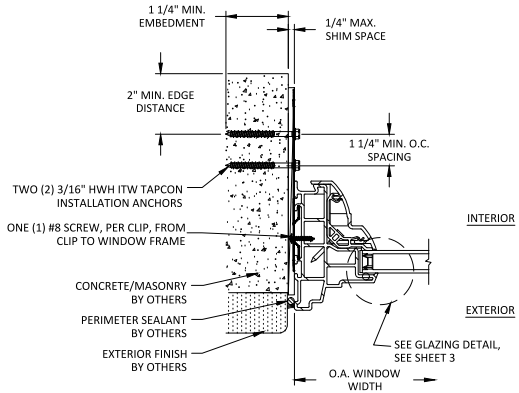
METAL SUBSTRATE: USE TWO #8 HWH SMS ANCHORS PER CLIP, IN ROW NUMBER ONE OF PREDRILLED HOLES SHOWN BELOW.

CONCRETE/MASONRY: USE TWO 3/16" ITW TAPCON ANCHORS, WITH ONE ANCHOR PLACED IN ROW NUMBER ONE AND ONE ANCHOR PLACED IN ROW NUMBER TWO OF PREDRILLED HOLES SHOWN BELOW. ANCHORS MUST BE PLACED DIAGONALLY ACROSS THE CLIP.

DO NOT INSTALL ANCHORS THROUGH ROW NUMBER THREE.



INSTALLATION CLIP DETAIL



C
5
HORIZONTAL SECTION
JAMB - CONCRETE/MASONRY
INSTALLATION CLIP

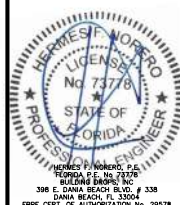


TITLE: RENEWAL BY ANDERSEN FINED WOODS - 1X WOOD ON CONCRETE/MASONRY (NON-HIT/NO-IMPACT) INSTALLATION CLIP DETAILS

PREPARED BY: BUILDING DROPS, INC.
398 E. DANIA BEACH BLVD., STE. 138
DANIA BEACH, FL 33004
PHONE: (954) 44-4728
FAX: (954) 44-4728
WEB: www.buildingdrops.com

REMARKS	BY	DATE
REV. FOR PG50 UNITS	MS	2.15.16
FBC UPDATE	SM	2.17.18
7TH FBC CODE CHANGE	SR	3.24.20

THE INSTALLATION OF THIS PRODUCT IS THE RESPONSIBILITY OF THE USER AND MAY NOT REFLECT ACTUAL CONDITIONS FOR A SPECIFIC SITE. IF SITE CONDITIONS REQUIRE MODIFICATION TO DEVIATE FROM THE REQUIREMENTS DETAILED HEREIN, A LICENSED ENGINEER OR ARCHITECT SHALL PREPARE SITE SPECIFIC DOCUMENTS FOR USE WITH THIS DOCUMENT.



FL #: **FL19562**

DATE: **12.17.15**

DWG. BY: **SM** CHK. BY: **MSS**

SCALE: **NTS**

DWG. #: **AWD092**

SHEET:

