

THESE DRAWINGS HAVE BEEN PREPARED IN PART, BASED UPON INFORMATION PROVIDED BY OTHERS. THE DESIGNER ASSUMES NO RESPONSIBILITY FOR THE ACCURACY OF THESE DRAWINGS FOR ANY ERRORS OR OMISSIONS THAT MAY HAVE BEEN INCORPORATED INTO THE PROJECT. THE DESIGNER ON THIS DOCUMENT IS ADVISED TO OBTAIN VERIFICATION OF ITS ACCURACY. ALL WORK SHALL COMPLY WITH ANY AND ALL APPLICABLE CODES AND ORDINANCES. SUPERINTENDENTS ARE RESPONSIBLE FOR THE PROPER INSTALLATION OF THE INFORMATION, DESIGN AND BUILDING TECHNIQUES HELD WITHIN THESE DRAWINGS. THE EXCLUSIVE PROPERTY OF THE PARTIES NOTED ON THIS TITLE BLOCK.



DOLLAR GENERAL
 4924 NW US HWY 41
 LAKE CITY, FL 32055
 STORE # 180
 2019 PROTOTYPE - PLAN "DGP-B" - 10,640 SQ. FT.

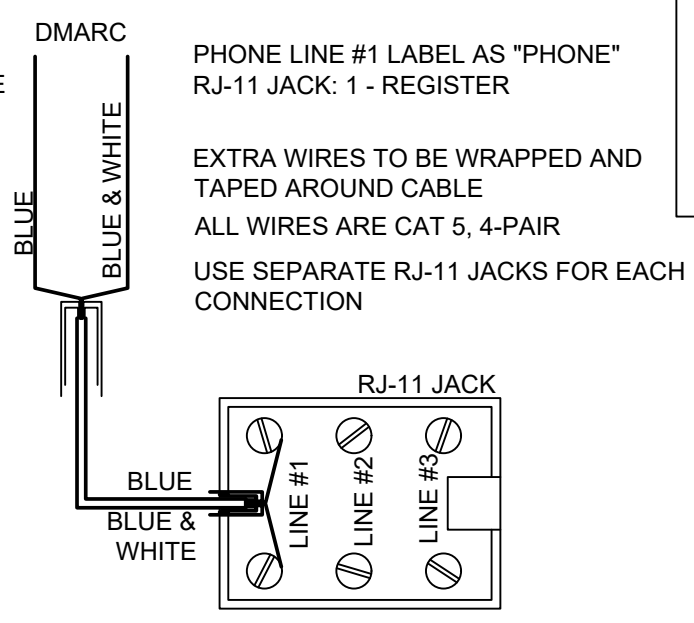
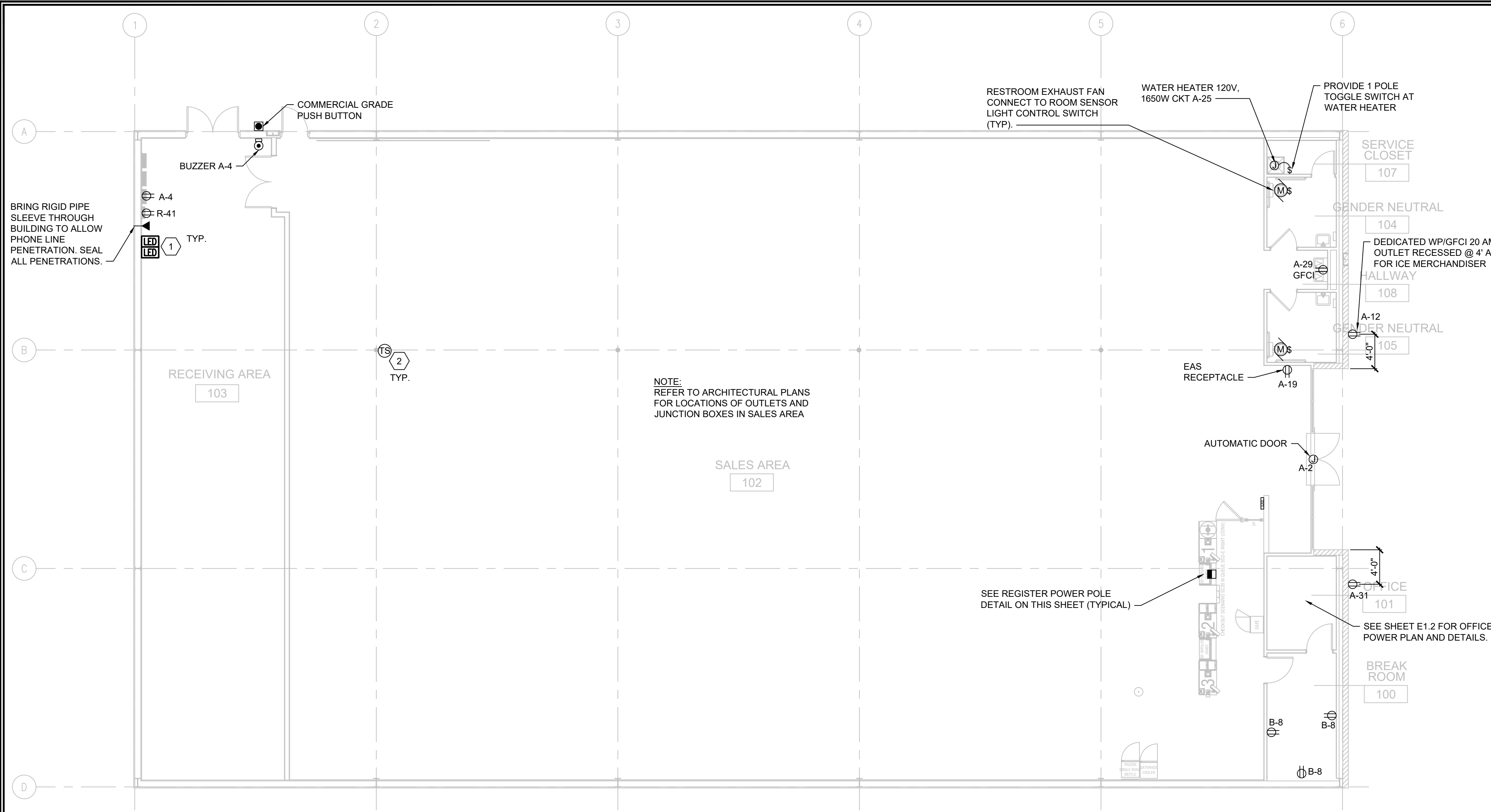
DRAWING DATE / DRAWN BY:
 9/4/24 - JTL
 REVISION DATE / REVISED BY:
 PROJECT NUMBER:
 4000.257
 DRAWING TITLE:
 POWER PLAN
 SHEET NO.
E1.1

ELECTRICAL SPECIFICATIONS

- A. ALL WIRING SHALL BE CONTAINED IN CONDUIT OF PROPER SIZE.
- B. ALL WIRING SHALL CONFORM TO LOCAL, STATE AND FEDERAL CODES.
- C. SERVICE IS TO BE A MINIMUM 400 AMP, 3 PHASE (PREFERRED), 600 AMP, 1 PHASE OR LARGER IF REQUIRED BY CODE OR ELECTRICAL LOAD.
- D. REQUIRED CUSTOM BUILT POWER POLE ASSEMBLIES AVAILABLE FROM D&P CUSTOM LIGHTS & PRODUCTS INC., PHONE: (800) 251-2200 OR (615) 350-7800, 7111 COCKRILL BEND INDUSTRIAL ROAD, NASHVILLE, TN 37209. SEE E3.1.
- E. EXTERIOR EXPOSED PHONE LINES TO BE INSTALLED IN RIGID CONDUIT. PROVIDE EMERSON 3/4" X 5-FT. METALLIC CABLE U-GUARD #755, OR EQUAL.
- F. ELECTRICAL PANEL TO BE LABELED CORRECTLY WITH LEGIBLE PRINT.
- G. LOW VOLTAGE VENDOR TO PROVIDE AND INSTALL ONE (1) 24 GA., 4 TWISTED-PAIR, CATEGORY-FIVE (CAT5) DATA CABLE WITH MODULAR COMBO RJ-11/RJ-45 JACK AT MANAGER'S OFFICE. CABLE TO BE RUN FROM JACK TO DATA HUB LOCATION WITH 6'-0" LEFT COILED FOR INSTALLATION TO DATA HUB. A RJ-45 MALE FITTING SHOULD BE CRIMPED ON THIS END. DOLLAR GENERAL STORE OPENING TEAM WILL MAKE FINAL CONNECTION INTO THE DATA HUB.
- H. PROVIDE 1 1/2" EMT CONDUIT TO ACT AS ACCESS SLEEVE TO ALLOW PHONE COMPANY TO TERMINATE AT DMARC. CONTRACTOR TO PROVIDE AND INSTALL PHONE WIRING & RJ-11 PHONE JACK FOR COMPLETED WORKING SYSTEM PRIOR TO PHONE COMPANY FINAL HOOK UP.
- I. ALL 120 VOLT OUTDOOR RECEPTACLES TO HAVE "WET LOCATION - IN USE" COVERS.
- J. ALL CONDUCTORS TO BE COPPER, #12 AWG MINIMUM SIZE, OR AS REQUIRED BY LOAD AND OVER CURRENT PROTECTION.
- K. SEE EMS SHEETS EMS1 AND EMS2 FOR ENERGY MANAGEMENT SYMBOLS AND INFORMATION.
- L. ELECTRICIAN TO PROVIDE 1 1/2" CONDUIT WITH PULL STRINGS FOR SATELLITE LOCATION.
- M. ALL POWER AND DATA TO BE ROUTED OVERHEAD. UNDER SLAB NOT ALLOWED.
- N. WITHIN 30 DAYS OF SYSTEM ACCEPTANCE, RECORD DRAWINGS OF THE INSTALLATION SHALL BE PROVIDED TO THE BUILDING OWNER, INCLUDING:
 - N.A. A SINGLE-LINE DIAGRAM OF THE BUILDING ELECTRICAL DISTRIBUTION SYSTEM.
 - N.B. FLOOR PLANS INDICATING LOCATION AND AREA SERVED FOR ALL DISTRIBUTION.
 - O. OPERATING AND MAINTENANCE MANUALS SHALL BE PROVIDED TO THE BUILDING OWNER, AND SHALL INCLUDE THE FOLLOWING AT A MINIMUM:
 - O.A. SUBMITTAL DATA STATING EQUIPMENT RATING AND SELECTED OPTIONS FOR EACH PIECE OF EQUIPMENT REQUIRING MAINTENANCE, EACH PIECE OF LIGHTING EQUIPMENT, AND ALL LIGHTING CONTROLS.
 - O.B. OPERATIONS MANUALS AND MAINTENANCE MANUALS FOR EACH PIECE OF EQUIPMENT REQUIRING MAINTENANCE AND EACH PIECE OF LIGHTING EQUIPMENT. REQUIRED ROUTINE MAINTENANCE, CLEANINGS, AND RELAMPING ACTIONS SHALL BE CLEARLY IDENTIFIED.
 - O.C. A NARRATIVE OF HOW EACH SYSTEM IS INTENDED TO OPERATE, INCLUDING RECOMMENDED SETPOINTS.
 - O.D. A SCHEDULE FOR INSPECTING AND RECALIBRATING ALL LIGHTING CONTROLS.
 - O.E. NAMES AND ADDRESSES OF AT LEAST ONE QUALIFIED SERVICE AGENCY.
 - P. A REGISTERED DESIGN PROFESSIONAL SHALL PROVIDE EVIDENCE THAT THE LIGHTING CONTROL SYSTEMS HAVE BEEN TESTED IN ACCORDANCE WITH FBC C408.3.1.1-3.1.3. DOCUMENTATION SHALL BE PROVIDED TO THE BUILDING OWNER OR AUTHORIZED AGENT WITHIN 90 DAYS OF RECEIPT OF THE CERTIFICATE OF OCCUPANCY. REPORT SHALL INCLUDE THE FOLLOWING:
 - P.A. RESULTS OF FUNCTIONAL PERFORMANCE TESTS.
 - P.B. DISPOSITION OF DEFICIENCIES FOUND DURING TESTING, INCLUDING DETAILS OF CORRECTIVE MEASURES USED OR PROPOSED.

LEGEND

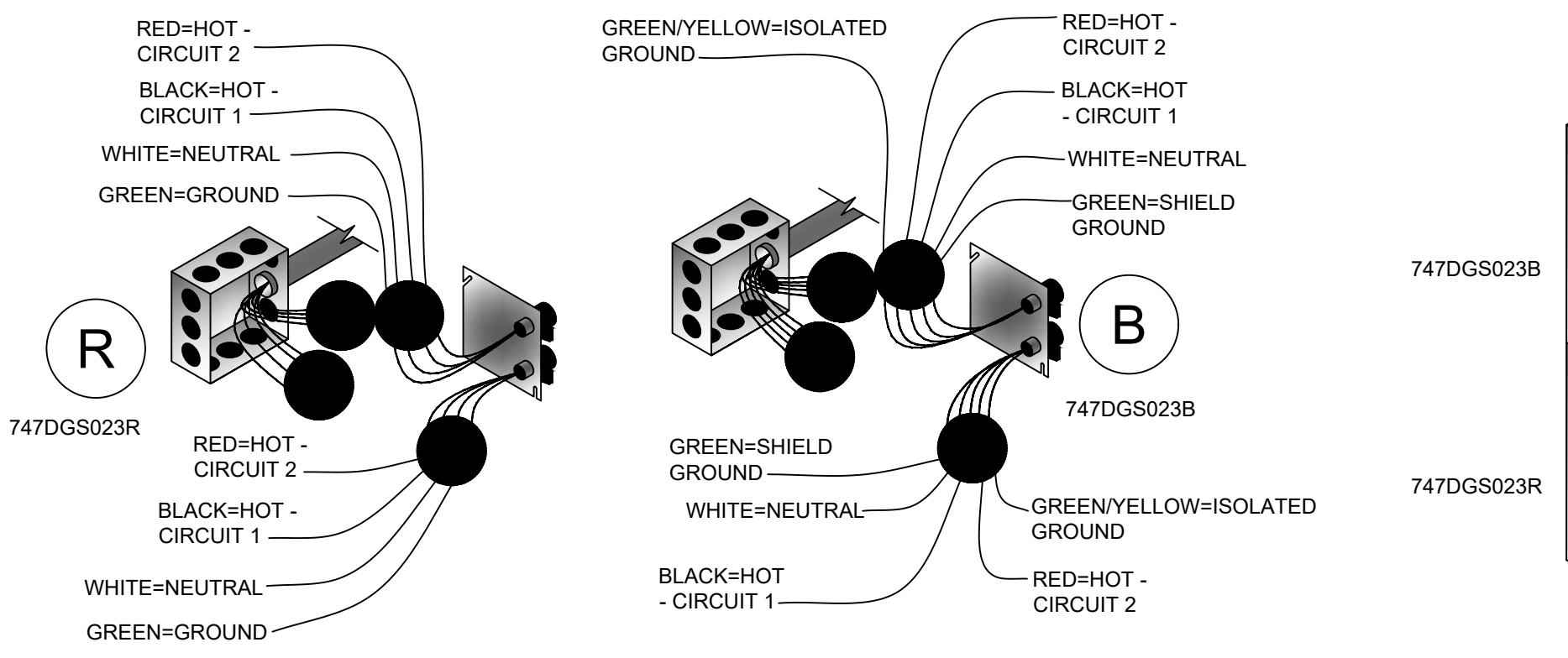
SYMB	DESCRIPTION
	BUZZER - TORK MDL #TA725 W/ TRANSFORMER MDL#TA592
	COMMERCIAL GRADE PUSH BUTTON
	125V NEMA 5-20R DUPLEX
	125/250V NEMA L14-20-R 4 PRONG TWIST LOCK
	125V NEMA 5-20R QUAD
	DISCONNECT
	BLACK MAGIC POWER POLE
	PHONE JACK
	RJ-11, RJ-45 DATA JACK, PHONE COMBO
	PANEL-CIRCUIT NUMBER
	PROVIDE OCCUPANCY LIGHT SENSOR- LEVITON ODS10-1DW
	20 AMP TOGGLE SWITCH
	NIGHT LIGHT CIRCUIT



5 REGISTER PHONE WIRING
 E1.1 SCALE: N.T.S.

DUAL CIRCUIT WIRING

747DGS023R	COLOR	747DGS023B
HOT - CIRCUIT 1	BLACK	HOT - CIRCUIT 1
HOT - CIRCUIT 2	RED	HOT - CIRCUIT 2
NEUTRAL	WHITE	NEUTRAL
GROUND	GREEN	GROUND
N/A	GREEN/YELLOW	ISOLATED GROUND



REGISTER ELECTRICAL COMPONENTS

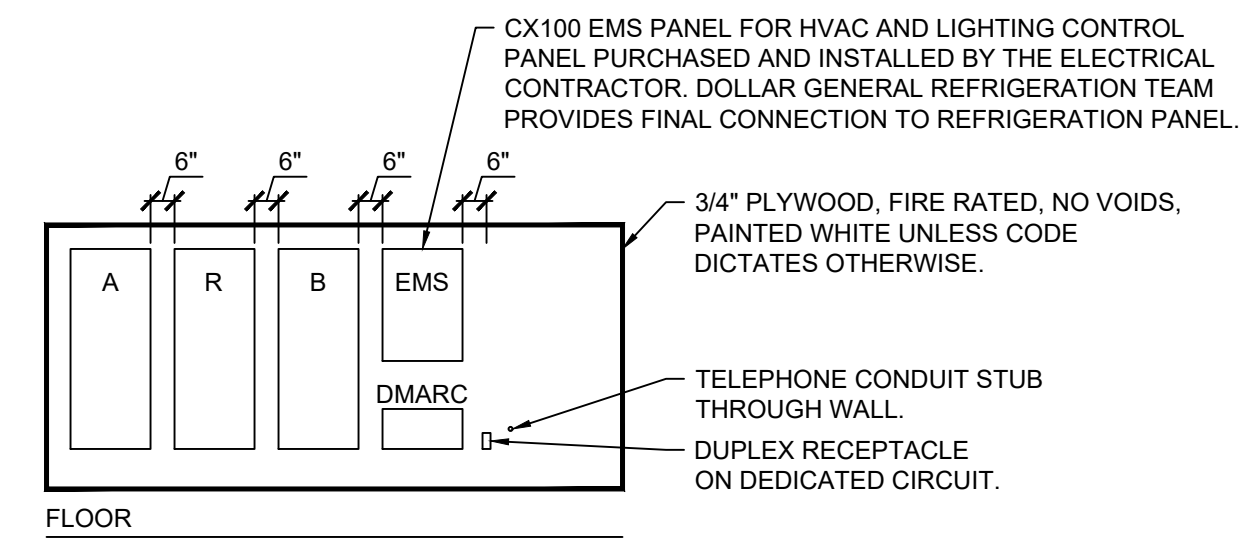
QTY	PART NUMBER	DESCRIPTION	VENDOR
4	747DGS023B	DUAL CIRCUIT POWER KIT WITH ISOLATED GROUND	D & P
4	747DGS023R	DUAL CIRCUIT POWER KIT	D & P
4	747DGS044-12BK	12' 2CH REGULAR POLE W/2-C & 1-D CONNECTOR DRW #2004-12	
4	747DGS032A	10' CABLE KIT (SET OF 4 WHIPS)	

*NOTE: BEFORE ORDERING AND INSTALLATION OF ELECTRICAL COMPONENTS FOR REGISTERS, CONSULT FINAL FIXTURE PLAN FOR NUMBER AND LOCATION.
 MAXIMUM CIRCUITS FOR REGISTERS:
 • CIRCUITS AT MAIN REGISTER - (9) 110V
 • CIRCUITS AT ISLAND REGISTER - (3) 110V

1 POWER PLAN
 E1.1 SCALE: 1/8" = 1'-0" NORTH

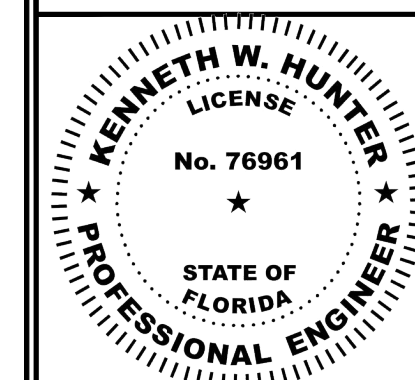
- SEISMIC RESTRAINT NOTES**
- A. OVERHEAD CONDUITS 2.5 INCHES AND GREATER REQUIRE SEISMIC RESTRAINT.
 - B. LIGHTING FIXTURE SUPPORTS SHOULD CONFORM TO UL 1570 OR 1571, IN ADDITION TO THE REQUIREMENTS OF FEMA 302 AND 303.
 - C. SUSPENDED TRANSFORMERS TO BE PROVIDED WITH SWAY BRACING.
 - D. WALL MOUNTED EMERGENCY LIGHTING FIXTURES TO BE SECURED TO STRUCTURE WITH REDUNDANT FASTENERS.

- ELECTRICAL KEYED NOTES**
- 1. TEST/RESET STATION FOR STAND ALONE DUCT DETECTOR. ONE FOR EACH DEVICE, SEE KEY NOTE 3 ON SHEET E1.3. SIMPLEX #4098-9842 IS SPECIFIED. WITH PIEZO AND LED INDICATOR LIGHT.
 - 2. MECHANICAL THERMOSTAT MOUNTED ON COLUMN AT 8'-0" AFF. SURFACE MOUNT BOX AND CONDUIT. STUB CONDUIT AT STRUCTURE.



2 ELECTRICAL PANEL ELEVATION
 E1.1 SCALE: N.T.S.

3 REGISTER ELECTRICAL DETAIL
 E1.1 SCALE: N.T.S.



THESE DRAWINGS HAVE BEEN PREPARED, IN PART, BASED UPON INFORMATION PROVIDED BY OTHERS. THE ENGINEER ASSUMES NO RESPONSIBILITY FOR THE ACCURACY OF THESE DRAWINGS FOR ANY ERRORS OR OMISSIONS THAT MAY HAVE BEEN INCORPORATED INTO THIS AS A RESULT OF INCORRECT INFORMATION PROVIDED BY OTHERS. SUPERINTENDENTS ARE ON THIS DOCUMENT ARE ADVISED TO OBTAIN VERIFICATION OF ITS ACCURACY. ALL WORK SHALL COMPLY WITH ANY AND ALL APPLICABLE CODES AND ORDINANCES. SUPERINTENDENTS ARE ADVISED TO OBTAIN VERIFICATION OF THE ACCURACY OF ALL INFORMATION, DESIGN AND BUILDING TECHNIQUES HELD WITHIN THESE DRAWINGS. THE EXCLUSIVE PROPERTY OF THE PARTIES NOTED ON THIS TITLE BLOCK.



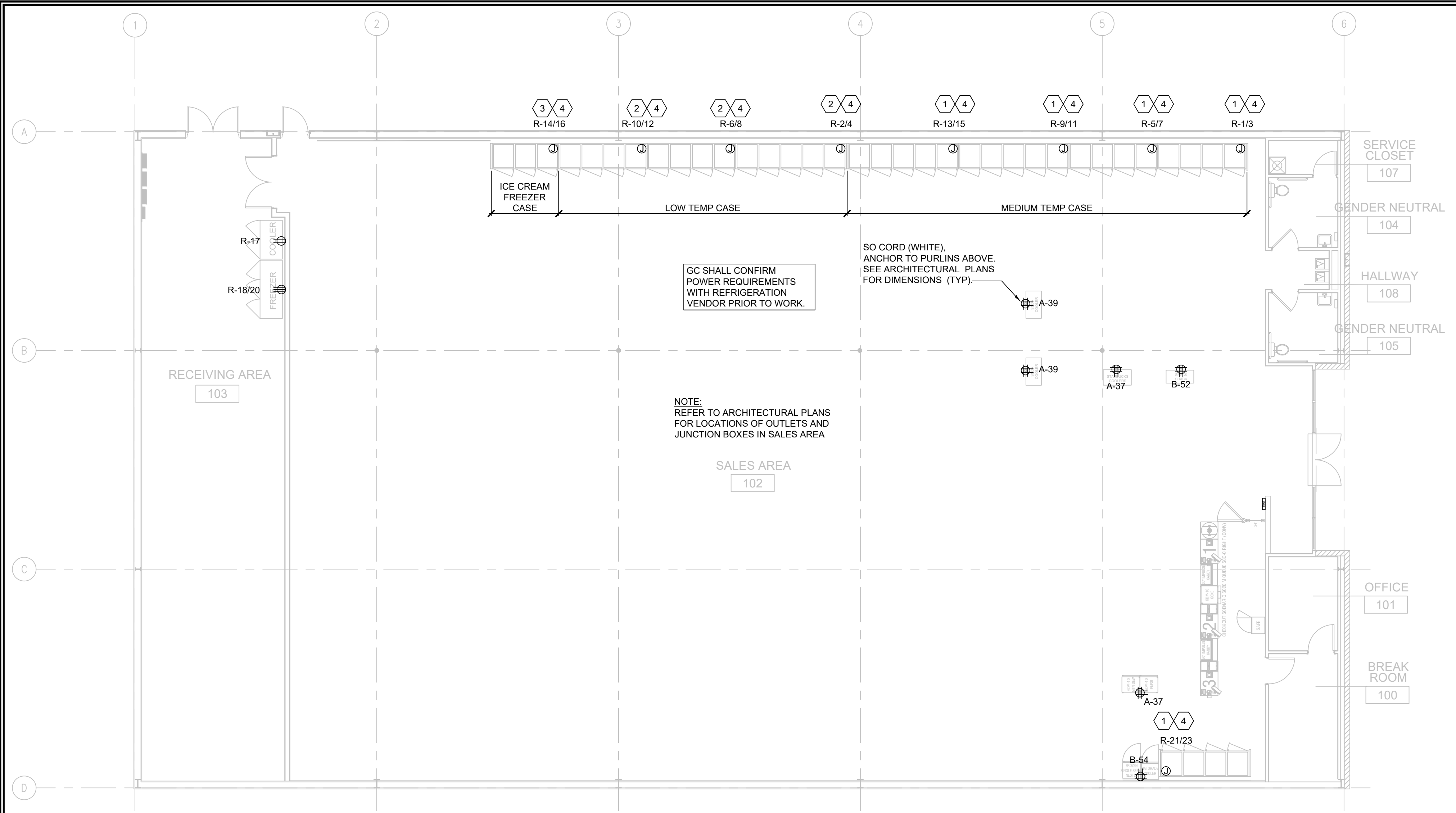
DOLLAR GENERAL
 4924 NW US HWY 41
 LAKE CITY, FL 32055
 STORE # 180
 2019 PROTOTYPE - PLAN 'DGP-B' - 10,640 SQ. FT.

DRAWING DATE / DRAWN BY:
 9/4/24 - JTL
 REVISION DATE / REVISED BY:
 PROJECT NUMBER:
 4000.257
 DRAWING TITLE:
 REFRIGERATION POWER & CABLE TRAY PLAN
 SHEET NO.

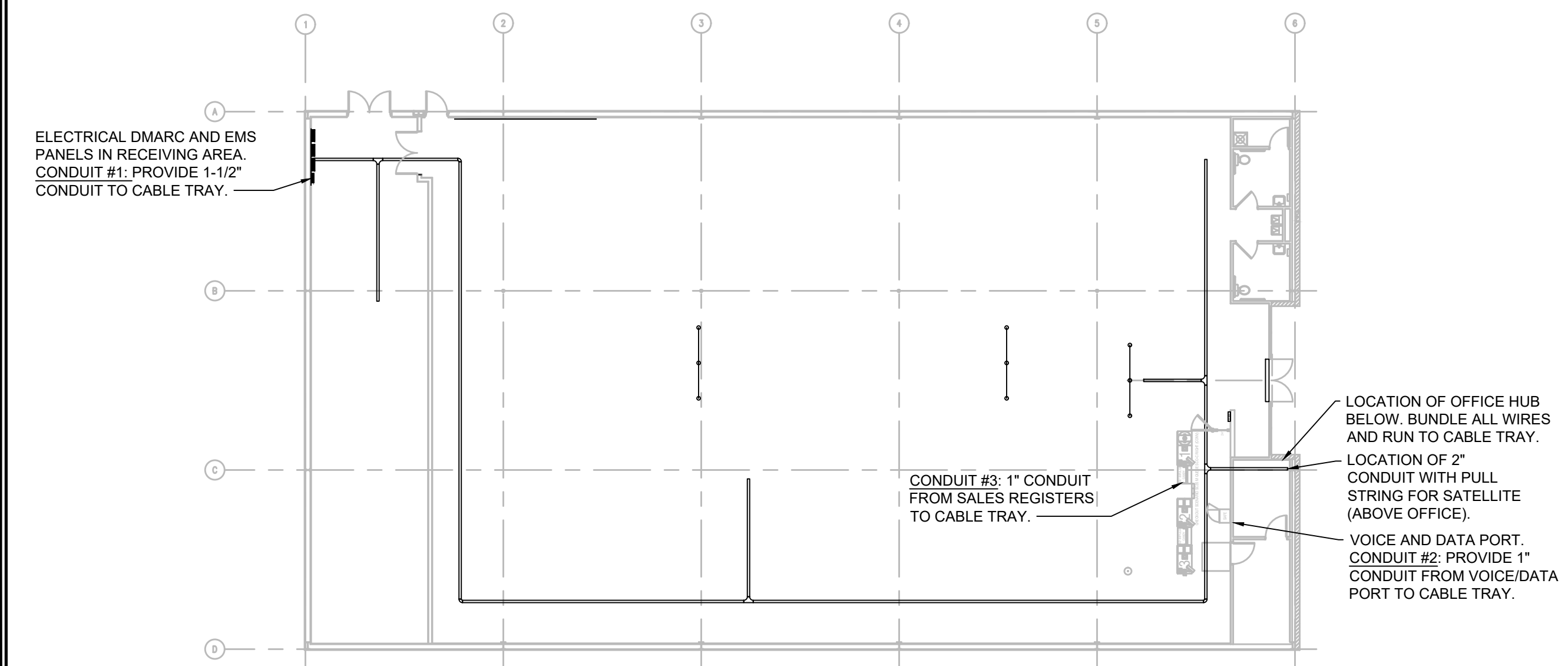
E1.2

LEGEND	
SYMB	DESCRIPTION
	BUZZER - TORK MDL #TA725 W/ TRANSFORMER MDL#TA592
	COMMERCIAL GRADE PUSH BUTTON
	125V NEMA 5-20R DUPLEX
	125/250V NEMA L14-20-R 4 PRONG TWIST LOCK
	125V NEMA 5-20R QUAD
	DISCONNECT
	BLACK MAGIC POWER POLE
	PHONE JACK
	RJ-11, RJ-45 DATA JACK, PHONE COMBO
	A-23 PANEL-CIRCUIT NUMBER
	PROVIDE OCCUPANCY LIGHT SENSOR- LEVITON ODS10-IDW
	20 AMP TOGGLE SWITCH
	NL NIGHT LIGHT CIRCUIT

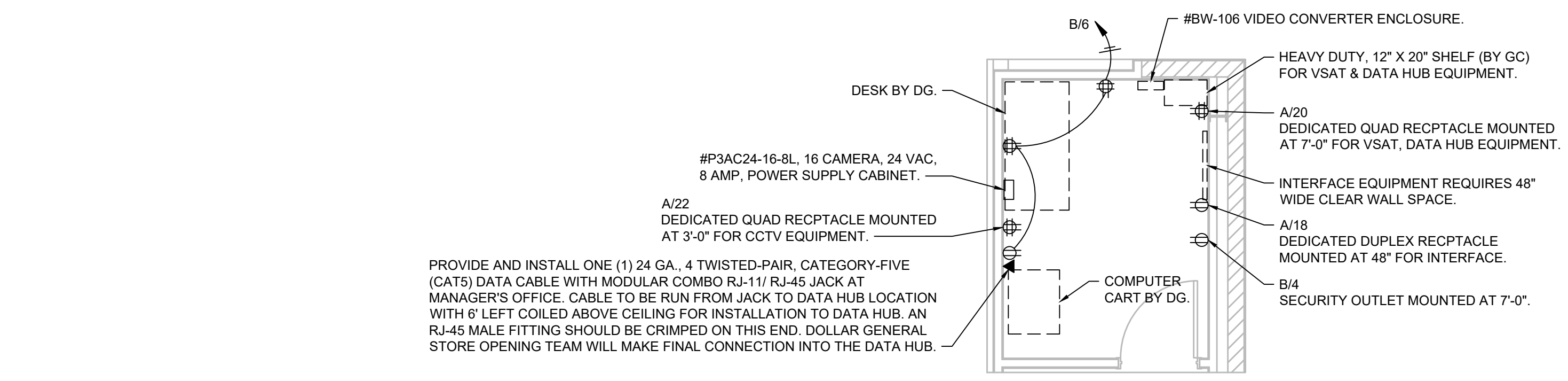
- GENERAL NOTES:**
- CONFIRM POWER REQUIREMENTS WITH REFRIGERATION PRIOR TO WORK.
 - MOUNT ALL REFRIGERATOR OUTLETS AT 12" AFF. REFER TO SHEET A1 FOR EXACT PLACEMENT.
- PLAN NOTES:**
- PROVIDE 208V, 1 PHASE CONNECTION TO A J-BOX AT 90" AFF WITH (3)#12 CU. & #12 GROUND IN 3/4" R.C. TO PROVIDE AND INSTALL 30A-2NF DISCONNECT SWITCH AND WIRE FROM DISCONNECT SWITCH TO EQUIPMENT CONNECTIONS.
 - PROVIDE 208V, 1 PHASE CONNECTION TO A J-BOX AT 90" AFF WITH (3)#8 CU. & #10 GROUND IN 1" R.C. TO PROVIDE AND INSTALL 60A-2NF DISCONNECT SWITCH AND WIRE FROM DISCONNECT SWITCH TO EQUIPMENT CONNECTIONS.
 - PROVIDE 208V, 1 PHASE CONNECTION TO A J-BOX AT 90" AFF WITH (3)#10 CU. & #10 GROUND IN 3/4" R.C. TO PROVIDE AND INSTALL 30A-2NF DISCONNECT SWITCH AND WIRE FROM DISCONNECT SWITCH TO EQUIPMENT CONNECTIONS.
 - MOUNT J-BOX 11" FROM THE RIGHT SIDE OF EACH UNIT. CONFIRM EXACT LOCATION WITH REFRIGERATION VENDOR PRIOR TO WORK (TYP). COORDINATE ELECTRICAL AND ALL REQUIREMENTS WITH VENDOR/SUPPLIER.
 - J-BOX FOR CONNECTION TO LIGHTS/DOOR HEATER. COORDINATE ALL REQUIREMENTS WITH SUPPLIER/INSTALLER.



1 REFRIGERATION POWER PLAN
 E1.2 SCALE: 1/8" = 1'-0" NORTH



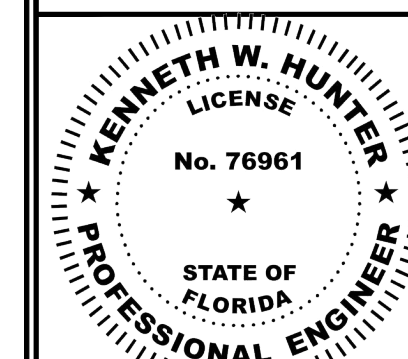
2 CABLE TRAY PLAN & CONDUIT DIAGRAM
 E1.2 SCALE: 1/16" = 1'-0" NORTH



3 OFFICE PLAN
 E1.2 SCALE: 1/4" = 1'-0"

This item has been digitally signed and sealed by Kenneth W. Hunter, P.E. on the date adjacent to the seal.

Printed copies of this document are not considered signed and sealed and the signature must be verified on any electronic copies.



THESE DRAWINGS HAVE BEEN PREPARED, IN PART, BASED UPON INFORMATION FURNISHED BY OTHERS. THE ENGINEER ASSUMES NO RESPONSIBILITY FOR THE ACCURACY OF THESE DRAWINGS FOR ANY ERRORS OR OMISSIONS THAT MAY HAVE BEEN INCORPORATED INTO AS A RESULT OF INCORRECT INFORMATION. THE ENGINEER HAS NOT OBTAINED VERIFICATION OF ITS ACCURACY. ALL WORK SHALL COMPLY WITH ANY AND ALL APPLICABLE CODES AND ORDINANCES. SUPERINTENDENTS ARE RESPONSIBLE FOR THE PROPER INSTALLATION OF ALL INFORMATION, DESIGN AND BUILDING TECHNIQUES HELD WITHIN THESE DRAWINGS. THE ENGINEER'S LIABILITY IS LIMITED TO THE TITLE BLOCK.



DOLLAR GENERAL
 4924 NW US HWY 41
 LAKE CITY, FL 32055
 STORE # 180
 2019 PROTOTYPE - PLAN "DGP-B" - 10,640 SQ. FT.

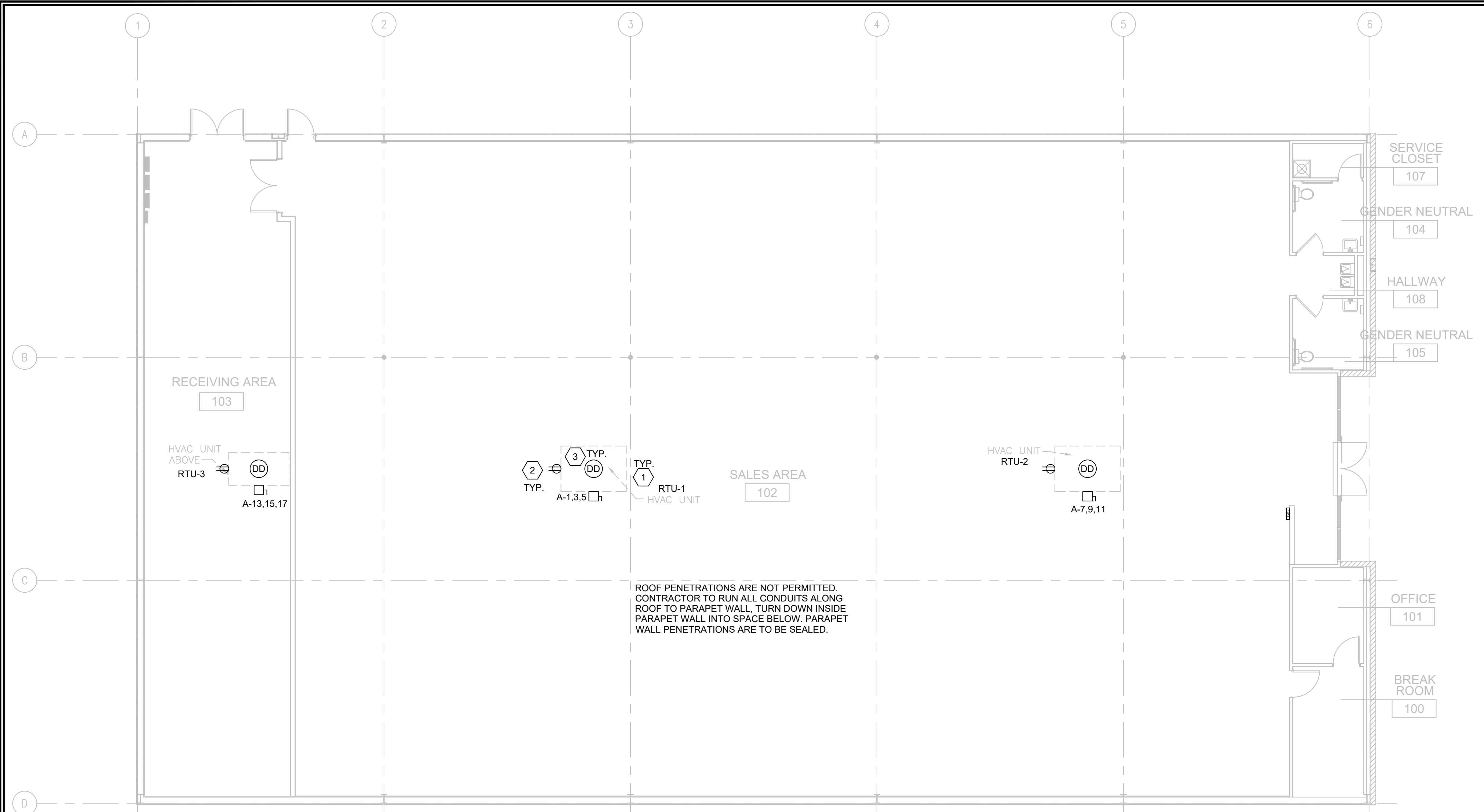
DRAWING DATE / DRAWN BY:
 9/4/24 - JTL
 REVISION DATE / REVISED BY:
 PROJECT NUMBER:
 4000.257
 DRAWING TITLE:
 ROOF POWER PLAN
 SHEET NO.

E1.3

LEGEND	
SYMB	DESCRIPTION
⊕	BUZZER - TORK MDL #TA725 W/ TRANSFORMER MDL#TA592
⊞	COMMERCIAL GRADE PUSH BUTTON
⊖	125V NEMA 5-20R DUPLEX
⊕	125/250V NEMA L14-20-R 4 PRONG TWIST LOCK
⊕	125V NEMA 5-20R QUAD
⊞	DISCONNECT
⊞	BLACK MAGIC POWER POLE
⊞	PHONE JACK
⊞	RJ-11, RJ-45 DATA JACK, PHONE COMBO
A-23	PANEL-CIRCUIT NUMBER
\$m	PROVIDE OCCUPANCY LIGHT SENSOR- LEVITON ODS10-IDW
\$	20 AMP TOGGLE SWITCH
NL	NIGHT LIGHT CIRCUIT

PLAN NOTES:

- LOCATIONS SHOWN FOR MECHANICAL UNITS ARE ONLY APPROXIMATE. CONTRACTOR MUST CONSULT MECHANICAL OR STRUCTURAL DRAWINGS TO DETERMINE ACTUAL UNIT LOCATIONS. PROVIDE 1/2" C. PENETRATION THRU ROOF WITHIN FOOTPRINT OF UNIT FOR USE WITH CONTROL WIRING TO UNIT BY OTHERS. PROVIDE PROPER WATERSEAL (TYPICAL).
- FACTORY MOUNTED POWERED CONVENIENCE OUTLET. FIELD VERIFY THAT OUTLET IS POWERED. WIRE ALL WITH THIS NOTE TO CIRCUIT R-34 IF THEY ARE NOT POWERED.
- PHOTOELECTRIC DUCT DETECTOR WITH HOUSING. TIE TO LED READOUT. STAND ALONE DEVICE. 120V. SIMPLEX #4098-9687 IS SPECIFIED WITH 4098-9842 CONTROL STATION. PROVIDE ONE DEVICE PER UNIT. MOUNT DEVICE IN SUPPLY AIR DUCTWORK. DEVICE SHALL BE PROVIDED AND WIRED TO THE CONTROL STATION BY THE ELECTRICAL CONTRACTOR. HIRE THE MECHANICAL CONTRACTOR FOR INSTALLATION IN DUCTWORK AND CONNECTION TO SHUTDOWN CONTROLS. ELECTRICAL CONTRACTOR SHALL PROVIDE ALL REQUIRED RELAYS AND 120V POWER. DO NOT POWER DUCT DETECTORS FROM HVAC UNIT LOW VOLTAGE. PLACE ANY REQUIRED LABELING ON CEILING TILE DIRECTLY BELOW UNIT. RUN CONDUIT & WIRE UNDERGROUND FROM UNIT TO INSIDE OF SPACE.



ROOF PENETRATIONS ARE NOT PERMITTED. CONTRACTOR TO RUN ALL CONDUITS ALONG ROOF TO PARAPET WALL, TURN DOWN INSIDE PARAPET WALL INTO SPACE BELOW. PARAPET WALL PENETRATIONS ARE TO BE SEALED.

1 ROOF POWER PLAN
 E1.3 / SCALE: 1/8" = 1'-0"
 NORTH

HVAC UNIT WIRING TABLE

UNIT	WIRE	COND	DISC	FUSE	ENCL	PH	VOLT	GND	BRKR	LOAD	CFM	TONS
RTU-1	#3	1 1/4"	100A/3P	90A	NEMA 3R	3φ	208	#8	90A/3P	24,770	5,000	12.5
RTU-2	#3	1 1/4"	100A/3P	90A	NEMA 3R	3φ	208	#8	90A/3P	22,770	5,000	12.5
RTU-3	#6	1"	60A/3P	40A	NEMA 3R	3φ	208	#10	45A/3P	11,520	2,000	5.0
EF-1	#12	3/4"	MOTOR RATED SWITCH		NEMA 1	1φ	120	#12	W/ LIGHTS	50	75	--
EF-2	#12	3/4"	MOTOR RATED SWITCH		NEMA 1	1φ	120	#12	20A/1P	50	75	--

TABLE NOTES:

- THE ELECTRICAL CONTRACTOR SHALL FIELD COORDINATE WITH THE MECHANICAL CONTRACTOR CONCERNING THE ELECTRICAL INFO OF ALL MECHANICAL DEVICES REQUIRING AN ELECTRICAL CONNECTION PRIOR TO DOING ANY WORK. ANY DISCREPANCIES BETWEEN THE FIELD OBTAINED INFORMATION AND THE INFORMATION SHOWN ON THE ELECTRICAL PLANS SHALL BE BROUGHT TO THE ATTENTION OF THE ENGINEER PRIOR TO DOING ANY WORK.
- PROVIDE NEUTRALS ON AS REQUIRED BASIS. FIELD VERIFY.
- ALL DISCONNECTS TO BE HEAVY DUTY. FUSES TO BE RK-5 TYPE. SUBMIT SHOP DRAWINGS. BUSSMAN FRN-R-(AMP) IS SPECIFIED.

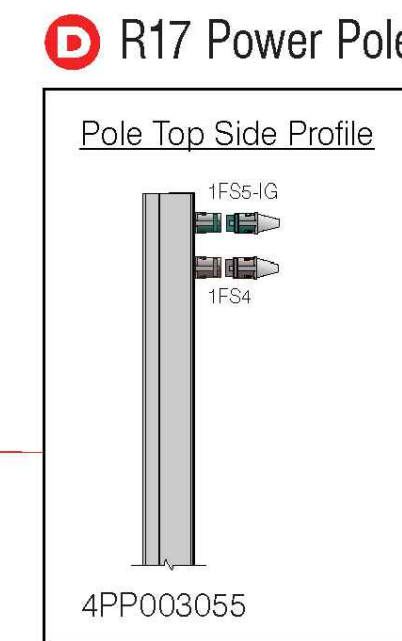
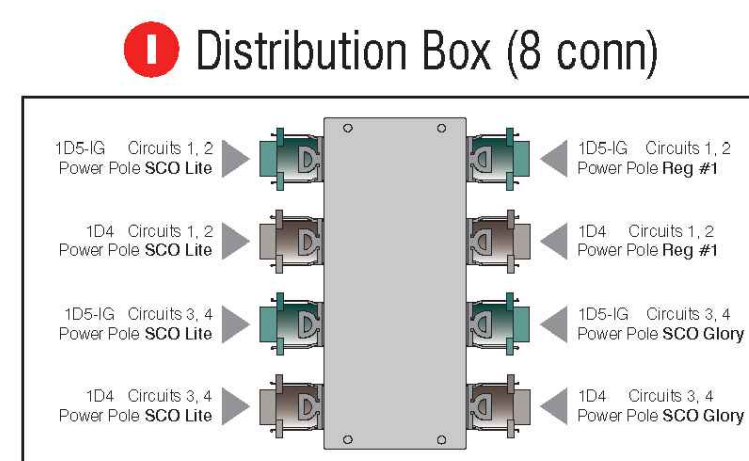
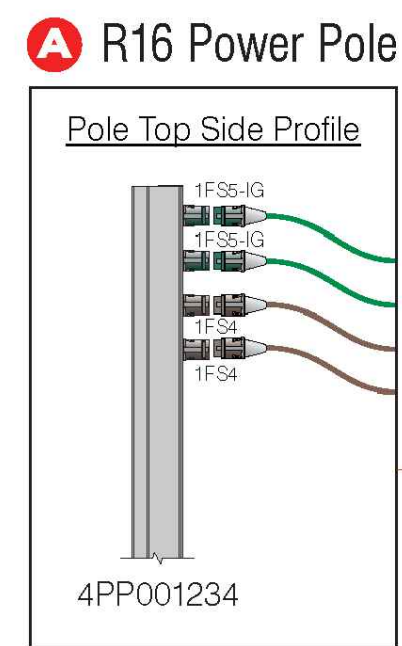
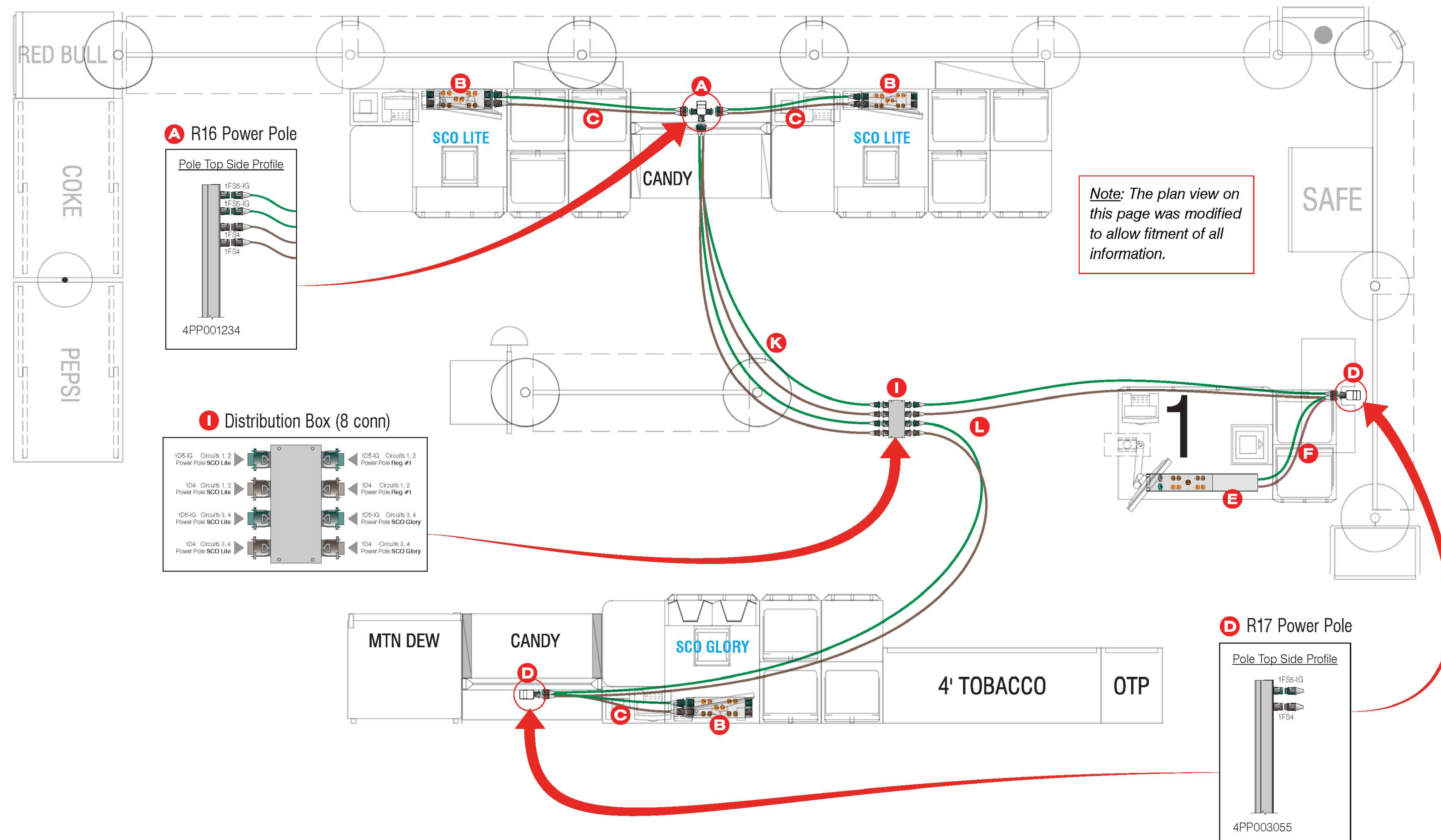
This item has been digitally signed and sealed by Kenneth W. Hunter, P.E. on the date adjacent to the seal.



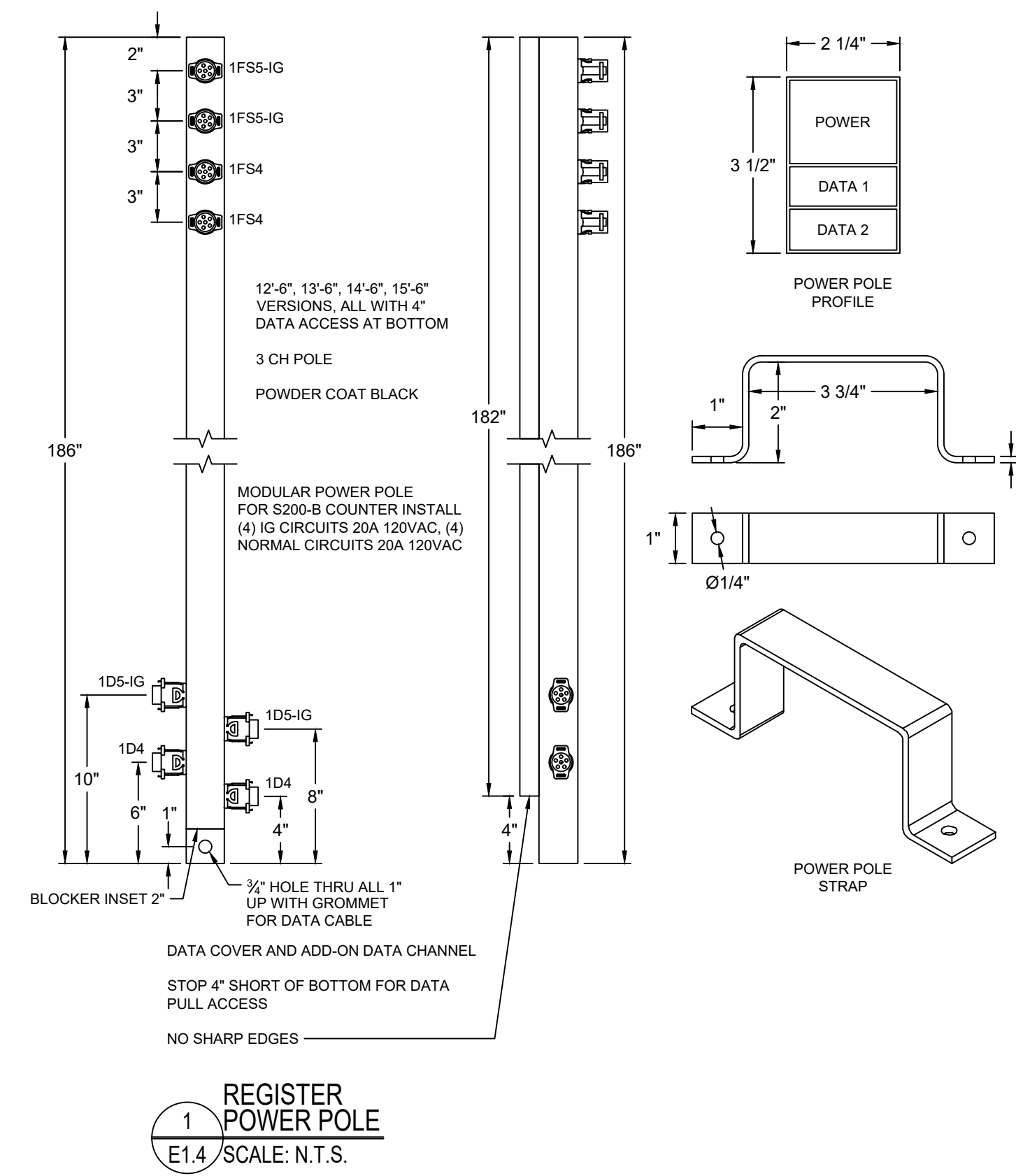
Printed copies of this document are not considered signed and sealed and the signature must be verified on any electronic copies.

(352) 238-6366
 www.hdceng.com
 696 1st Ave N, Ste. 302
 St. Petersburg, FL 33701
 FL CA #51946
 & CONSULTING GA CA #PEF007171

CHECKOUT SCENARIO SC27 QUEUE SCO RIGHT



Description	QTY	Part #	Description	QTY	Part #
A R16 Power Pole	1	747DGS044	F E Cable Kit	1	747DGS068-C
B SCO Power Box	3	747DGS059-SC-2357	I Distribution Box (8 conn)	1	747DGS081
C SCO Cable Kit	3	747DGS058-SC	K R16 Cable Kit (set of 4)	1	747DGS032A
D R17 Power Pole	2	747DGS080	L R16-20 Cable Kit (set of 4)	1	747DGS032A-20
E E Power Box	1	747DGS068-2600-E			

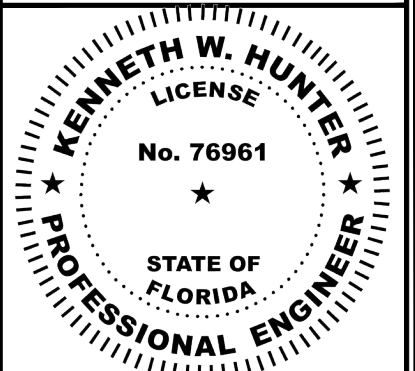


File: SCOfFlowScenarios 2023

NOTE: COORDINATE REGISTER POWER POLE INSTALLATION WITH STORE REGISTER LAYOUT.



KENNETH W. HUNTER, P.E.
PROFESSIONAL ENGINEER
696 1ST AVE N, STE 200
ST. PETERSBURG, FL 33701
PE #76961



THESE DRAWINGS HAVE BEEN PREPARED IN PART, BASED UPON INFORMATION FURNISHED BY OTHERS. THE ENGINEER HAS NOT CONDUCTED A VISUAL CHECK OF THE INFORMATION. THE ENGINEER ASSUMES NO RESPONSIBILITY FOR THE ACCURACY OF THESE DRAWINGS FOR ANY ERRORS OR OMISSIONS THAT MAY HAVE BEEN INCORPORATED INTO THIS AS A RESULT OF INCORRECT INFORMATION. ALL WORK SHALL COMPLY WITH ANY AND ALL APPLICABLE CODES AND ORDINANCES. SUPERINTENDENTS ARE RESPONSIBLE FOR THE ACCURACY OF THE INFORMATION, DESIGN AND BUILDING TECHNIQUES HELD WITHIN THIS TITLE BLOCK.

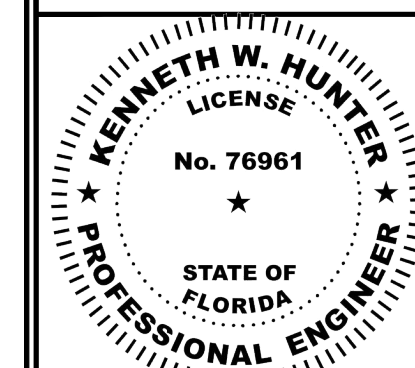


DOLLAR GENERAL
4924 NW US HWY 41
LAKE CITY, FL 32055
STORE # 180
2019 PROTOTYPE - PLAN 'DGP-B' - 10,640 SQ. FT.

DRAWING DATE / DRAWN BY:
9/4/24 - JTL
REVISION DATE / REVISED BY:
PROJECT NUMBER:
4000.257
DRAWING TITLE:
REGISTER POWER POLE
SHEET NO.

E1.4

This item has been digitally signed and sealed by Kenneth W. Hunter, P.E. on the date adjacent to the seal.
HDC (352) 238-6366 www.hdceng.com
Hunter Design & CONSULTING FL CA #51946 GA CA #PEF007171
696 1st Ave N, Ste. 302
St. Petersburg, FL 33701



THESE DRAWINGS HAVE BEEN PREPARED IN PART, BASED UPON INFORMATION PROVIDED BY OTHERS. THE USER SHALL BE RESPONSIBLE FOR THE ACCURACY OF THESE DRAWINGS FOR ANY ERRORS OR OMISSIONS THAT MAY HAVE BEEN INCORPORATED INTO AS A RESULT OF INCORRECT INFORMATION. ALL WORK SHALL COMPLY WITH ANY AND ALL APPLICABLE CODES AND ORDINANCES. SUPERINTENDENTS ARE RESPONSIBLE FOR THE PROPER APPLICATION OF ALL INFORMATION, DESIGN AND BUILDING TECHNIQUES HELD WITHIN THE EXCLUSIVE PROPERTY OF THE PARTIES NOTED ON THIS TITLE BLOCK.



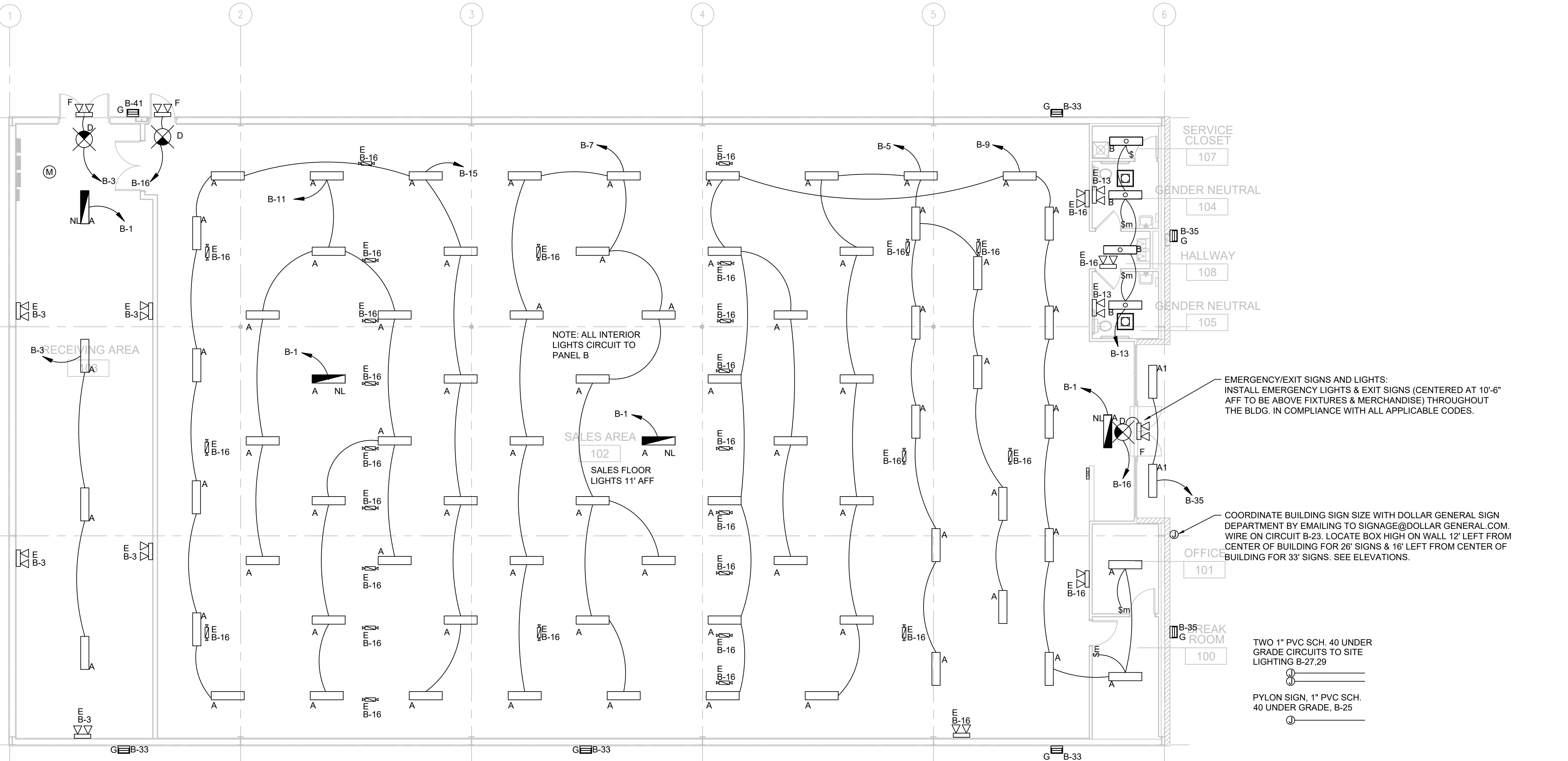
DOLLAR GENERAL
 4924 NW US HWY 41
 LAKE CITY, FL 32055
 STORE # 180 PLAN "DGP-B" - 10,640 SQ. FT.
 2019 PROTOTYPE PLAN

DRAWING DATE / DRAWN BY:
 9/4/24 - JTL
 REVISION DATE / REVISED BY:
 PROJECT NUMBER:
 4000.257
 DRAWING TITLE:
 LIGHTING PLAN
 SHEET NO.

E2

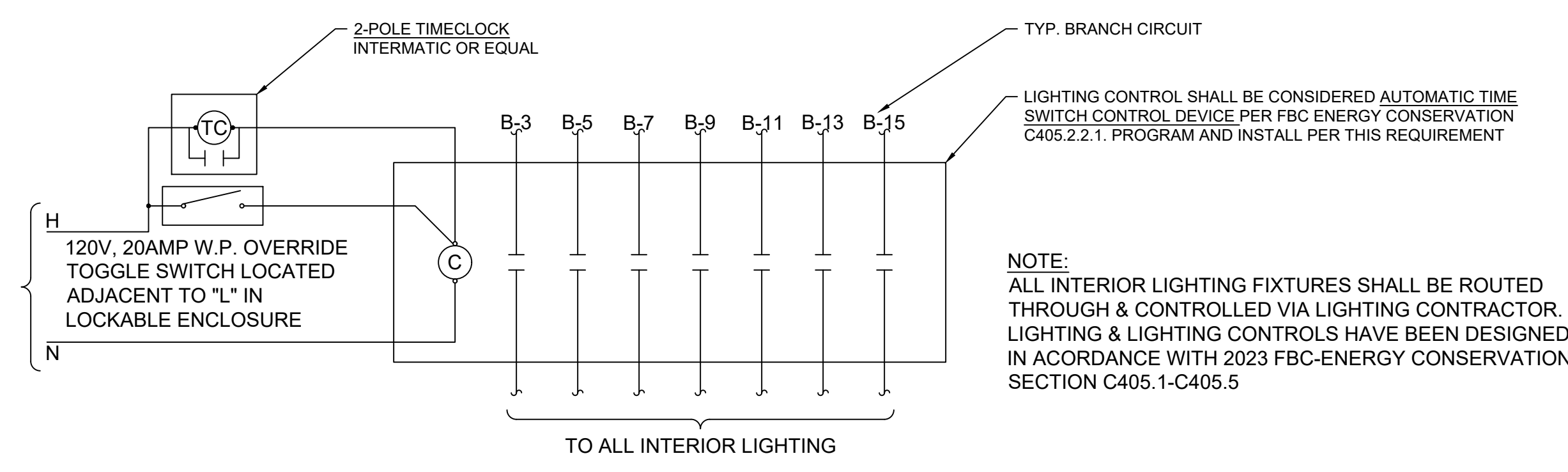
NLES LIGHT FIXTURE SCHEDULE				
TYPE	MANF.	PART	DESCRIPTION	WATT
A	LEDS	ST5000	4' LED FIXTURE AERIAL MOUNT INCLUDES (2) 8 FT CABLES	33
A-NL	ETI	54583361	4' BBU COMPATIBLE LED FIXTURE	33
B	LEDS	ST2000	2' LED FIXTURE SURFACE MOUNT	20
C	ETI	55301101	LED EXIT SIGN	--
D	LEDS	EM2505	LED EXIT SIGN / EMERGENCY LIGHT COMBO WITH (2) HEADS	--
E	LEDS	EL2500	LED EMERGENCY LIGHT WITH (2) HEADS	--
F	LEDS	EL2501	LED EGRESS EMERGENCY LIGHT WITH (1) HEAD	--
F2	LEDS	EL2502	LED EGRESS EMERGENCY LIGHT WITH (2) HEADS	--
G	LEDS	WP4053	LED WALL PACK MOUNT AT 12' AFF	40
HB	LEDS	AL1210	LED AREA LIGHT MOUNTED ON WALL	150
HP/J	LEDS	AL1210/LEDS-POLE-DM490	(1) AREA LIGHT ON A 25' POLE	150
HP2/J	LEDS	AL1210/LEDS-POLE-DM490	(2) AREA LIGHTS ON A 25' POLE	300
T		CTL2830 WITH 11W PAR 30 E26 LED	TRACK LIGHT	

NOTES:
 A. REFER TO SHEET "T01" FOR NATIONAL ACCOUNT VENDORS LIST.
 B. PROVIDE A 1 AMP CURRENT LIMITER FOR EACH TRACK.
 C. PROVIDE ALL TRACK FIXTURE ACCESSORIES.

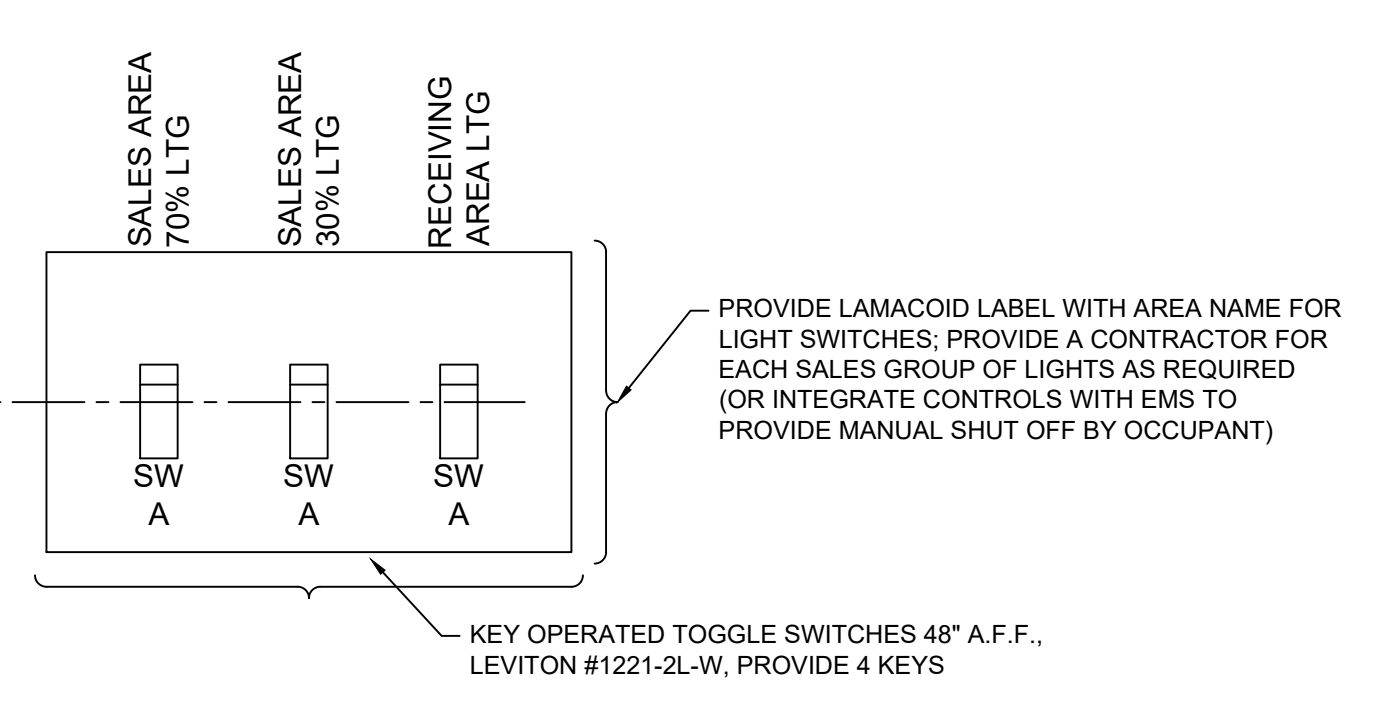


RECEIVING AREA LIGHTS ARE MOTION CONTROLLED. MOUNT AT 10'-12" AFF AND SPACE EVENLY BETWEEN FRONT AND REAR WALL OF THE RECEIVING AREA.

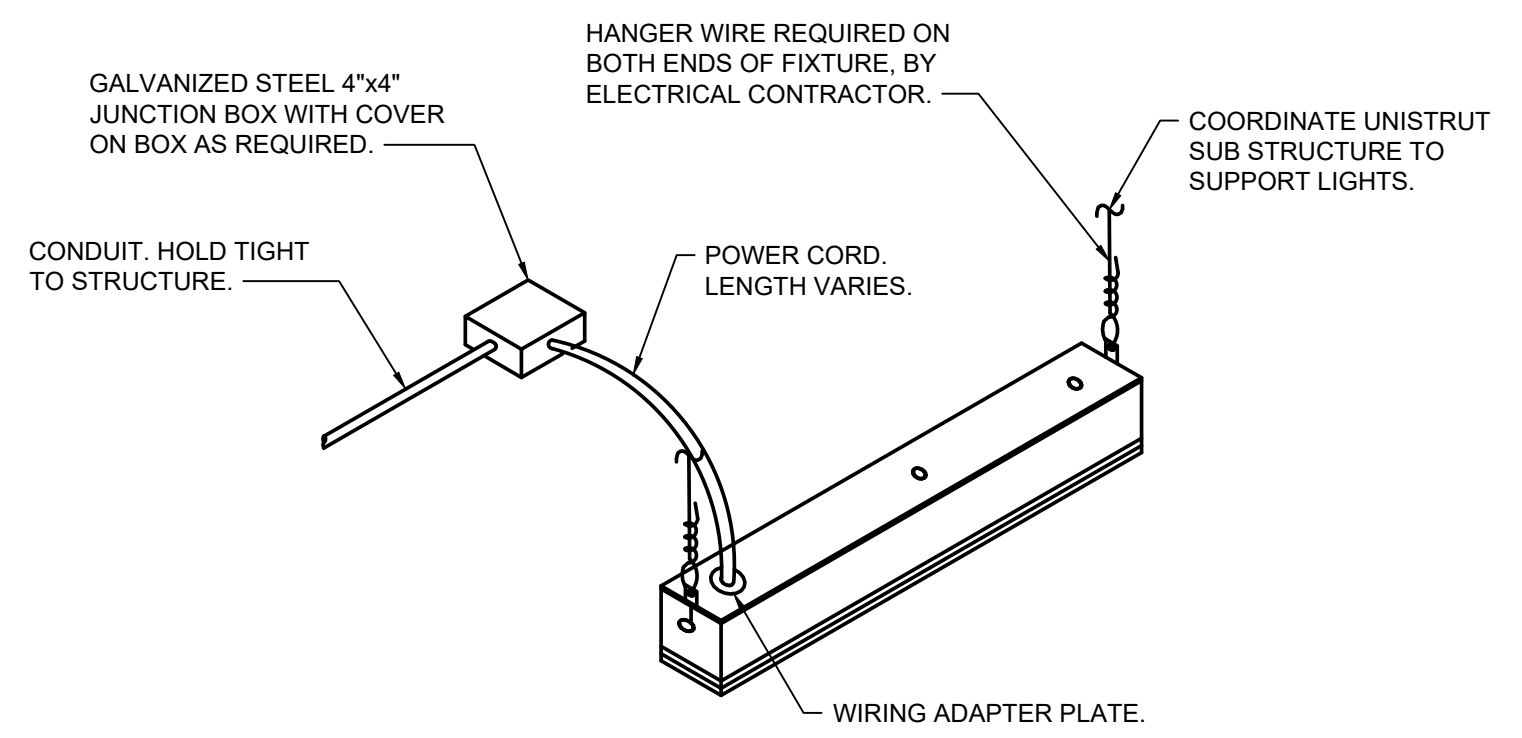
1 LIGHTING PLAN
 E2 SCALE: 1/8" = 1'-0" NORTH



3 INTERIOR LIGHTING CONTROL DIAGRAM "LC-1"
 E2 SCALE: N.T.S.



4 SWITCH BANK DETAIL
 E2 SCALE: N.T.S.



2 TYP. LED MOUNTING DETAIL
 E2 SCALE: N.T.S.

This item has been digitally signed and sealed by Kenneth W. Hunter, P.E. on the date adjacent to the seal.

Printed copies of this document are not considered signed and sealed and the signature must be verified on any electronic copies.

HDC (352) 238-6366
 www.hdceng.com
 696 1st Ave N, Ste. 302
 St. Petersburg, FL 33701
 FL CA #51946
 GA CA #PEF007171
Hunter Design & Consulting

PANEL "A" 120/208V, 3-PHASE, 4-WIRE			600A FRAME, 500A MCB			SURFACE MOUNT			NEMA 1				
CKT #	LOAD (WATTS)	DESCRIPTION	TOTAL PER PHASE IN WATTS			CB	DESCRIPTION	LOAD (WATTS)	CKT #				
			AMP	POLE						AMP	POLE		
1	8256	HVAC UNIT # 1	8356			20	1	AUTOMATIC DOOR	100	2			
3	8256		8616			20	1	TELEPHONE BOARD/BUZZER	360	4			
5	8256				8436	20	1	ENERGY MANAGEMENT	180	6			
7	8256	HVAC UNIT # 2	8436			20	1	OUTDOOR HVAC RECEPT.	180	8			
9	8256				8436	20	1	OUTDOOR DRINK VENDING	180	10			
11	8256				8436	20	1	OUTDOOR CONV RECEPT.	180	12			
13	3936	HVAC UNIT # 3	4036			20	1	EXHAUST FAN	100	14			
15	3936				4036	20	1	EXHAUST FAN	100	16			
17	3936				4436	20	1	INTERFACE EQUIP.	500	18			
19	1200	EAS RECEPTACLE	1700			20	1	VSAT, DATA HUB EQUIP.	500	20			
21		SPARE			960	20	1	CCTV EQUIP.	960	22			
23		SPARE			924	20	1	CLICK & COLLECT FREEZER/COOLER	924	24			
25	1650	WATER HEATER	1650			20	1	SPARE		26			
27		SPARE			0	20	1	SPARE		28			
29	500	DRINKING FOUNTAINS	500			20	1	SPARE		30			
31	1200	OUTDOOR ICE MERCHANDISER	15720			20	1		14520	32			
33	1200	HIGH KIOSK			16460	150	3	PANEL "R"	15260	34			
35		SPARE			12370	20	1		12370	36			
37	1600	DRINK COOLERS	8625			20	1		7025	38			
39	1600	SODA COOLERS			6600	150	3	PANEL "B"	5000	40			
41		SPARE			9354	20	1		9354	42			
* HANDLE LOCK ON DEVICE			TOTAL	48523	45108	44456	TOTAL CONNECTED =			138087	WATTS	383	AMPS

PROVIDE FIELD MARKINGS PER NEC 110.24 OF THE CALCULATED FAULT CURRENT OF 14,750 DATED ###-##-##

LOAD SUMMARY					
120/208V	3-PHASE, 4-WIRE		CAPACITY: 500 AMP		TOTAL LOAD
LOAD TYPE	CONNECTED	DEMAND	DEMAND FORMULA		CONNECTED
LIGHTING	8.26 KW	10.32 KW	LOAD x 125% (NEC 210.19 CONTINUOUS)		138.09 KW
RECEPT.	21.64 KW	15.82 KW	10KVA + 50% REMAINDER (NEC 220.44)		
HVAC	61.54 KW	61.54 KW	LOAD x 100%		372.86 AMPS
MISC	46.64 KW	46.64 KW	LOAD x 100% (NEC 210.19 NON-CONT)		
NP	0.00 KW	0.00 KW	NONCOINCIDENTAL LOADS (NEC 220.60)		

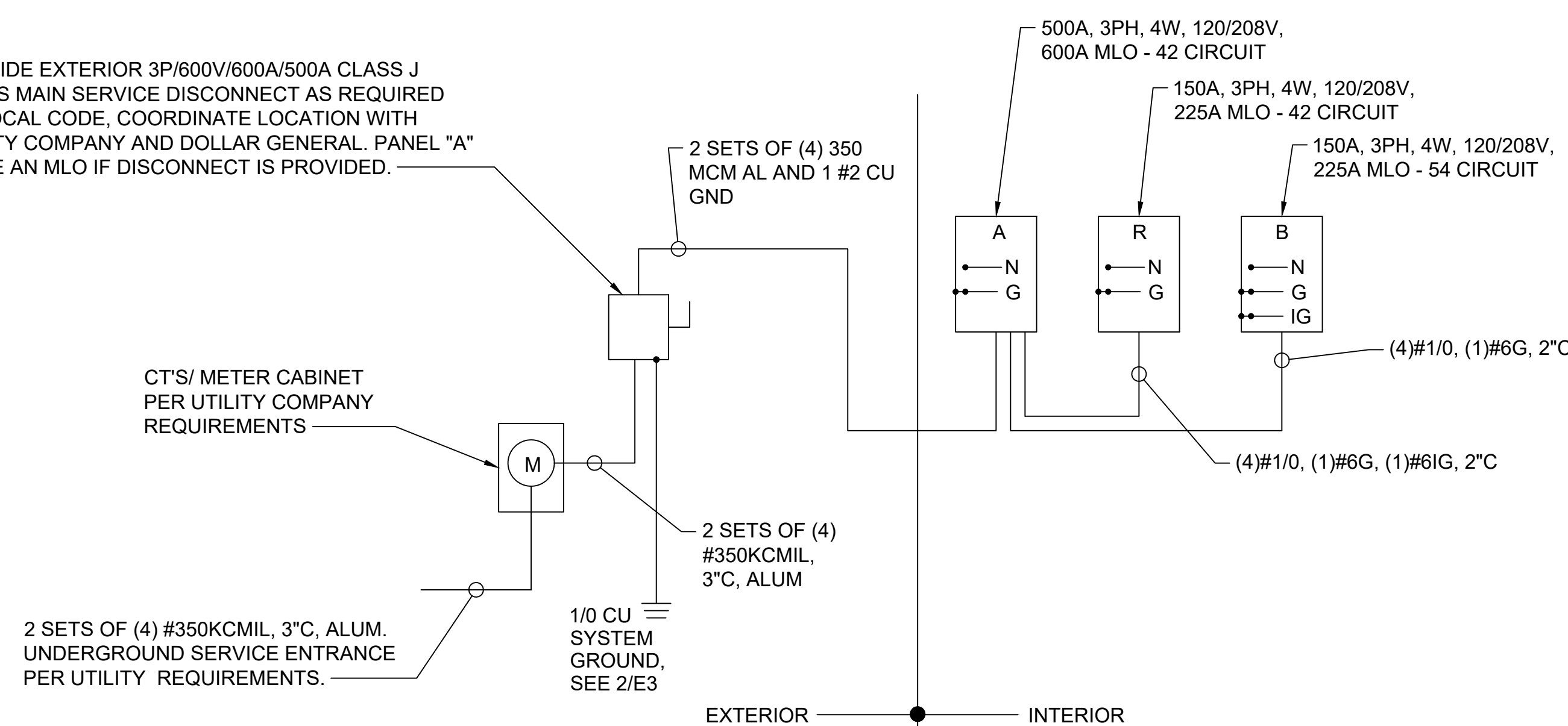
PANEL "B" 120/208V, 3-PHASE, 4-WIRE			150A MLO			SURFACE MOUNT			NEMA 1				
CKT #	LOAD (WATTS)	DESCRIPTION	TOTAL PER PHASE IN WATTS			CB	DESCRIPTION	LOAD (WATTS)	CKT #				
			AMP	POLE						AMP	POLE		
1	230	NIGHT LIGHTS	230			20	1	SPARE		2			
3	135	RECEIVING LIGHTS			635	20	1	SECURITY RECEPT.	500	4			
5	765	70% SALES LIGHTS - ROWS 2 & 3			1305	20	1	OFFICE RECEPTS.	540	6			
7	585	70% SALES LIGHTS - ROWS 5 & 6	20	1	1125	20	1	BREAK RM RECEPTS.	540	8			
9	585	30% SALES LIGHTS - ROWS 1 & 4	20	1	585	20	1	SPARE		10			
11	585	70% SALES LIGHTS - ROWS 8 & 9	20	1	585	20	1	SPARE		12			
13	90	BREAK RM/OFF. R.R. LIGHTS	20	1	1170	20	1	BULKHEAD RECEPTS.	1080	14			
15	450	30% SALES LIGHTS - ROWS 7 & 10	20	1	500	20	1	EMERGENCY EXIT LIGHTS	50	16			
17		SPARE			0	20	1	SPARE		18			
19		SPARE			0	20	1	SPARE		20			
21		SPARE			0	20	1	SPARE		22			
23	900	BUILDING SIGN	20	1	900	20	1	SPARE		24			
25	900	PYLON SIGN	20	1	900	20	1	SPARE		26			
27	300	SITE LIGHTING	20	1	300	20	1	SPARE		28			
29	1400	SITE LIGHTING	20	1	2600	20	1	POWER TERMINAL BROWN	1200	30			
31		SPARE			1200	20	1	POWER TERMINAL BROWN	1200	32			
33	400	LEFT SIDE EXT. WALL LTS	20	1	1600	20	1	POWER TERMINAL GREEN	1200	34			
35	600	FRONT EXT. WALL/CANOPY LTS	20	1	1800	20	1	POWER TERMINAL GREEN	1200	36			
37	0	SPARE			1200	20	1	POWER TERMINAL GREEN	1200	38			
39	0	SPARE			1200	20	1	POWER TERMINAL GREEN	1200	40			
41	100	EXTERIOR DUSK/DAWN	20	1	1300	20	1	POWER TERMINAL BROWN	1200	42			
43		SPARE			1200	20	1	POWER TERMINAL BROWN	1200	44			
45		SPARE			0	20	1	SPARE		46			
47		SPARE			0	20	1	SPARE		48			
49		SPARE			0	20	1	SPARE		50			
51		SPARE			180	20	1	DISPLAY LIGHT	180	52			
53		SPARE			864	20	1	GATORADE	864	54			
* HANDLE LOCK ON DEVICE			TOTAL	7025	5000	9354	TOTAL CONNECTED =			21379	WATTS	59	AMPS

PROVIDE FIELD MARKINGS PER NEC 110.24 OF THE CALCULATED FAULT CURRENT OF 14,750 DATED ###-##-##

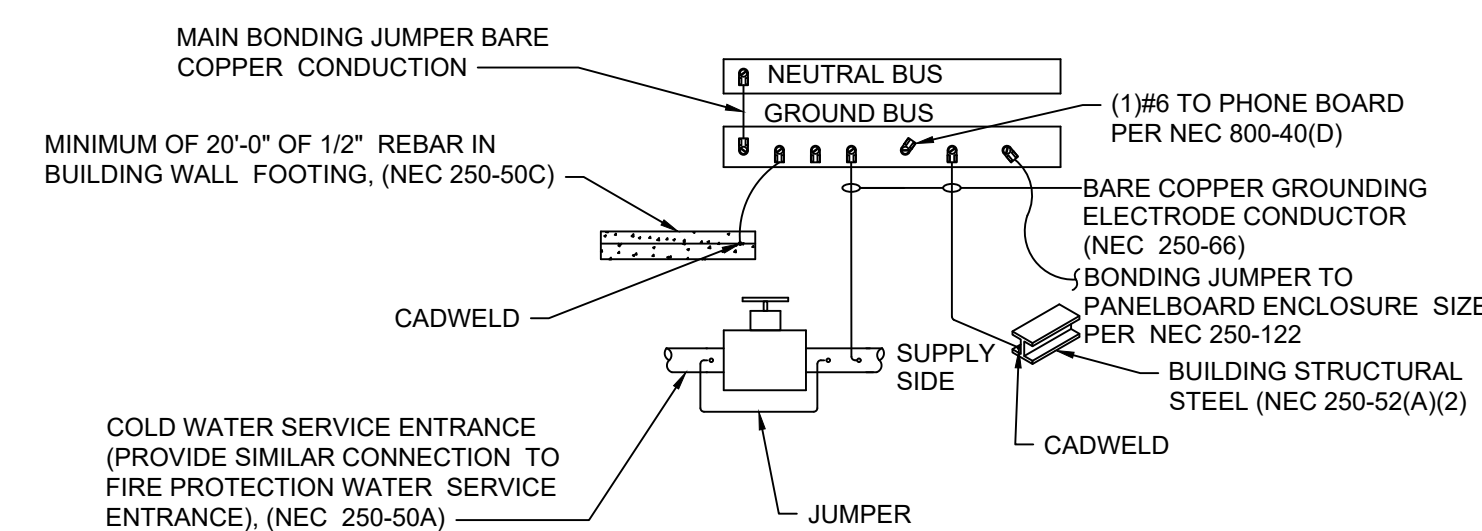
PANEL "R" 120/208V, 3-PHASE, 4-WIRE			150A MLO			SURFACE MOUNT			NEMA 1				
CKT #	LOAD (WATTS)	DESCRIPTION	TOTAL PER PHASE IN WATTS			CB	DESCRIPTION	LOAD (WATTS)	CKT #				
			AMP	POLE						AMP	POLE		
1	1300	A-1-A REACH-IN DAIRY CASE	5200			40	2	A-2-A REACH-IN FROZEN CASE	3900	2			
3	1300				5200	40	2		3900	4			
5	1300				4500	40	2	A-2-B REACH-IN FROZEN CASE	3200	6			
7	1300	A-1-B REACH-IN DAIRY CASE	4500			40	2		3200	8			
9	1300				4500	40	2		3200	10			
11	1300				4500	40	2	A-2-C REACH-IN FROZEN CASE	3200	12			
13	1300	A-1-D REACH-IN DAIRY CASE	3900			25	2		2600	14			
15	1300				3900	25	2	A-3 REACH-IN FROZEN CASE	2600	16			
17	1150				2070	20	2		920	18			
19		72" COOLER	15	1	920	20	2	72" FREEZER	920	20			
21	1300	COOLER			1300	20	2			22			
23	1300				1300	20	2	SPARE		24			
25					0	20	2	SPARE		26			
27		SPARE			0	20	2	SPARE		28			
29		SPARE			0	20	2	SPARE		30			
31		SPARE			0	20	1	SPARE		32			
33		SPARE			360	20	1	SERVICE RECEPTS ON ROOF	360	34			
35		SPARE			0	20	2	SPARE		36			
37		SPARE			0	20	1	SPARE		38			
39		SPARE			0	20	1	SPARE		40			
41		SPARE			0	20	1	SPARE		42			
* HANDLE LOCK ON DEVICE			TOTAL	14520	15260	12370	TOTAL CONNECTED =			42150	WATTS	117	AMPS

PROVIDE FIELD MARKINGS PER NEC 110.24 OF THE CALCULATED FAULT CURRENT OF 14,750 DATED ###-##-##

PROVIDE EXTERIOR 3P/600V/600A/500A CLASS J FUSES MAIN SERVICE DISCONNECT AS REQUIRED BY LOCAL CODE, COORDINATE LOCATION WITH UTILITY COMPANY AND DOLLAR GENERAL. PANEL "A" TO BE AN MLO IF DISCONNECT IS PROVIDED.



1 ELECTRIC PANEL SCHEMATIC
E3 SCALE: N.T.S.



NOTE: ALL GROUNDING SHALL BE INSTALLED IN ACCORDANCE WITH ARTICLE 250-50 OF THE NATIONAL ELECTRICAL CODE.

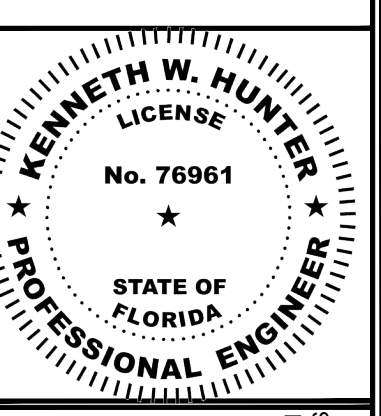
2 GROUNDING DETAIL
E3 SCALE: N.T.S.

This item has been digitally signed and sealed by Kenneth W. Hunter, P.E. on the date adjacent to the seal.

Printed copies of this document are not considered signed and sealed and the signature must be verified on any electronic copies.

HDC (352) 238-6366
www.hdceng.com
696 1st Ave N, Ste. 302
St. Petersburg, FL 33701
FL CA #51946
GA CA #PEF007171

KENNETH W. HUNTER, P.E.
PROFESSIONAL ENGINEER
696 1ST AVE N, STE 302
ST. PETERSBURG, FL 33701
PE #76961



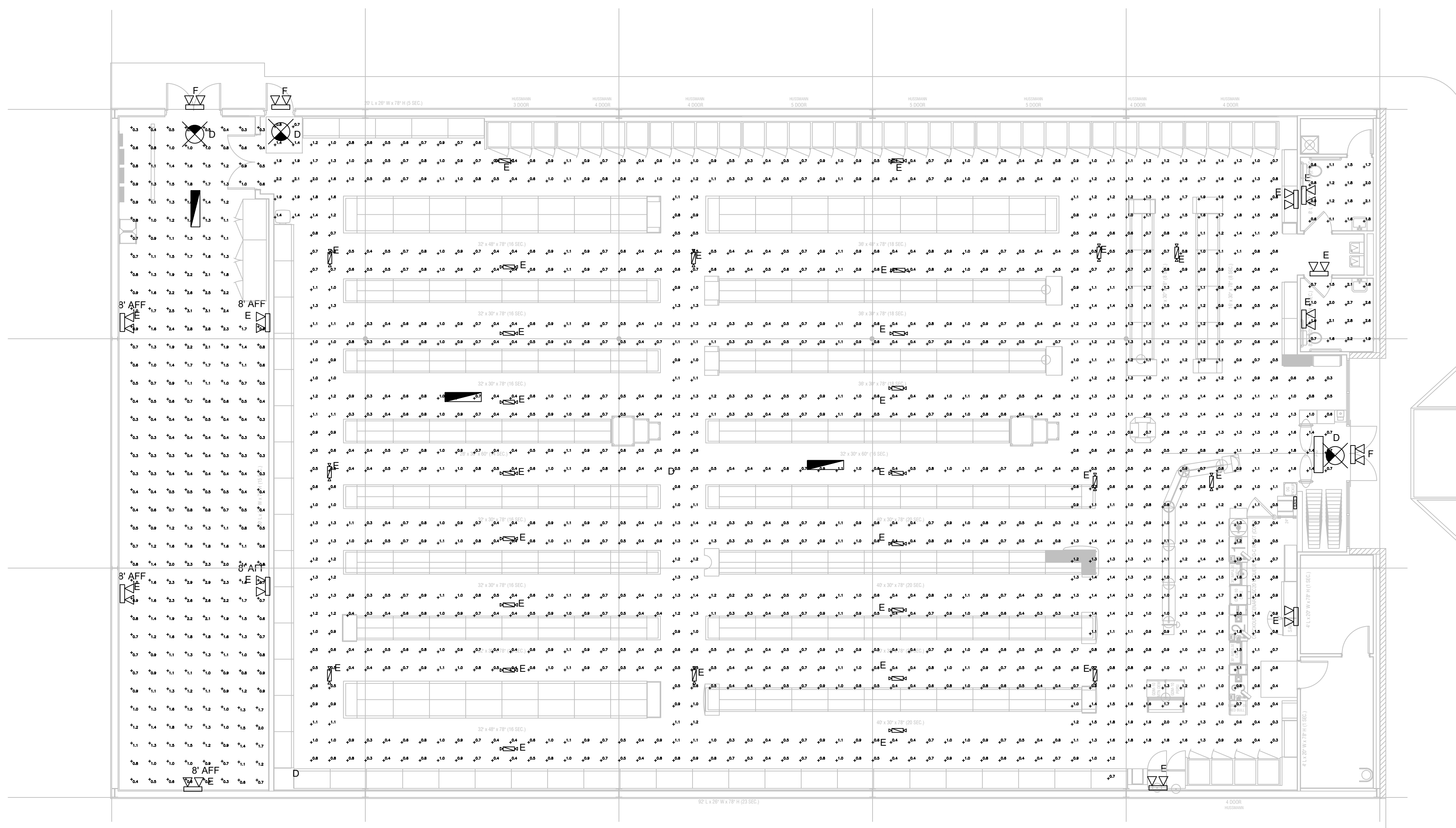
THESE DRAWINGS HAVE BEEN PREPARED, IN PART, BASED UPON INFORMATION FURNISHED BY OTHERS. THE ENGINEER ASSUMES NO RESPONSIBILITY FOR THE ACCURACY OF THESE DRAWINGS FOR ANY ERRORS OR OMISSIONS THAT MAY HAVE BEEN INCORPORATED INTO AS A RESULT OF INCORRECT INFORMATION. THE ENGINEER HAS NOT OBTAINED VERIFICATION OF THE ACCURACY OF THE INFORMATION FURNISHED BY OTHERS. SUPERINTENDENTS ARE APPLICABLE CODES AND ORDINANCES. SUPERINTENDENTS ARE RESPONSIBLE FOR OBTAINING ALL NECESSARY PERMITS AND INFORMATION. DESIGN AND BUILDING TECHNIQUES HELD WITHIN ARE THE EXCLUSIVE PROPERTY OF THE PARTIES NOTED ON THIS TITLE BLOCK.

DOLLAR GENERAL
DEVELOPMENT

4924 NW US HWY 41
LAKE CITY, FL 32055
STORE # 180 - PLAN DGP-B - 10,640 SQ. FT.


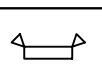
DRAWING DATE / DRAWN BY: 9/4/24 - JTL
REVISION DATE / REVISED BY:
PROJECT NUMBER: 4000.257
DRAWING TITLE: DGHP ELECTRICAL PANELS
SHEET NO.

E3

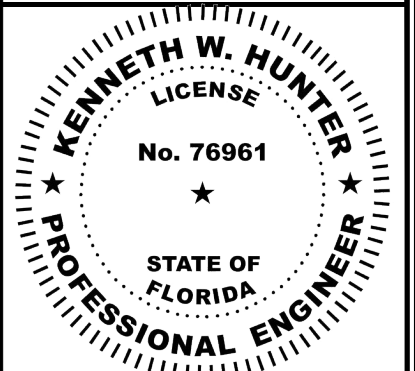


1 INTERIOR EMERGENCY PHOTOMETRIC PLAN
 E4 SCALE: 1/8" = 1'-0" 

Description	Symbol	Avg	Max	Min	Max/Min	Avg/Min
SALES AREA EGRESS	+	1.0 fc	2.2 fc	0.2 fc	11.0:1	5.0:1
MENS RR EGRESS	+	1.4 fc	2.1 fc	0.6 fc	3.5:1	2.3:1
WOMENS RR EGRESS	+	1.8 fc	2.8 fc	0.7 fc	4.0:1	2.6:1
RECEIVING EGRESS	+	1.1 fc	3.1 fc	0.3 fc	10.3:1	3.7:1

Symbol	Label	QTY	Manufacturer	Catalog Number	Description	Lamp	Filename	Lumens per Lamp	LLF
	D	4	LEDS-LLC	EM2505	COMBINATION EXIT/EMERGENCY	ULTRA BRIGHT LED	EU2C.ies	125	1
	E	38	LEDS-LLC	E2500	LED TWIN-HEAD UNIT	ULTRA BRIGHT LED	EU2C.ies	125	1

KENNETH W. HUNTER, P.E.
 PROFESSIONAL ENGINEER
 696 1ST AVE N, STE 200
 ST. PETERSBURG, FL 33701
 PE #76961



THESE DRAWINGS HAVE BEEN PREPARED, IN PART, BASED UPON INFORMATION FURNISHED BY OTHERS. WHILE THE DESIGNER ASSUMES NO RESPONSIBILITY FOR THE ACCURACY OF THESE DRAWINGS FOR ANY ERRORS OR OMISSIONS THAT MAY HAVE BEEN INCORPORATED INTO THEM AS A RESULT OF INCORRECT INFORMATION, THE DESIGNER DOES NOT WARRANT THAT THE INFORMATION ON THIS DOCUMENT ARE ADVISED TO OBTAIN VERIFICATION OF ITS ACCURACY. ALL WORK SHALL COMPLY WITH ANY AND ALL APPLICABLE CODES AND ORDINANCES. SUPERINTENDENTS ARE RESPONSIBLE FOR THE PROPER APPLICATION OF ALL APPLICABLE INFORMATION, DESIGN AND BUILDING TECHNIQUES HELD WITHIN THIS TITLE BLOCK.



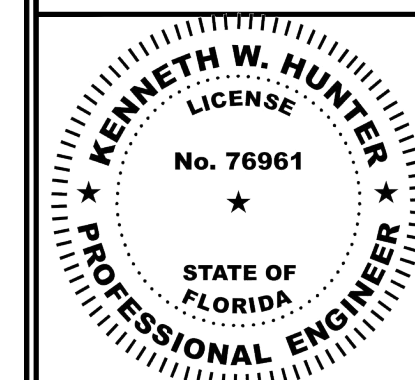
DOLLAR GENERAL
 4924 NW US HWY 41
 LAKE CITY, FL 32055
 STORE # 160
 2019 PROTOTYPE - PLAN "DGP-B" - 10,640 SQ. FT.

DRAWING DATE / DRAWN BY:
 9/4/24 - JTL
 REVISION DATE / REVISED BY:
 PROJECT NUMBER:
 4000.257
 DRAWING TITLE:
 EMERGENCY PHOTOMETRIC PLANS
 SHEET NO.

E4

This item has been digitally signed and sealed by Kenneth W. Hunter, P.E. on the date adjacent to the seal.
 Printed copies of this document are not considered signed and sealed and the signature must be verified on any electronic copies.

HDC (352) 238-6366
 www.hdceng.com
 696 1st Ave N, Ste. 302
 St. Petersburg, FL 33701
 FL CA #51946
Hunter Design & CONSULTING GA CA #PEF007171



THESE DRAWINGS HAVE BEEN PREPARED, IN PART, BASED UPON INFORMATION PROVIDED BY OTHERS. THE CONTRACTOR SHALL BE RESPONSIBLE FOR THE ACCURACY OF THESE DRAWINGS FOR ANY ERRORS OR OMISSIONS THAT MAY HAVE BEEN INCORPORATED INTO THE PROJECT. THE CONTRACTOR SHALL BE ADVISED TO OBTAIN VERIFICATION OF ITS ACCURACY. ALL WORK SHALL COMPLY WITH ANY AND ALL APPLICABLE CODES AND ORDINANCES. SUPERINTENDENTS ARE RESPONSIBLE FOR THE DESIGN AND BUILDING TECHNIQUES HELD WITHIN THE EXCLUSIVE PROPERTY OF THE PARTIES NOTED ON THIS TITLE BLOCK.



DOLLAR GENERAL
 4924 NW US HWY 41
 LAKE CITY, FL 32055
 STORE # 180
 2019 PROTOTYPE - PLAN 'DGP-B' - 10,640 SQ. FT.

DRAWING DATE / DRAWN BY:
 9/4/24 - JTL
 REVISION DATE / REVISED BY:
 PROJECT NUMBER:
 4000.257
 DRAWING TITLE:
 EMS LOW VOLTAGE PLAN
 SHEET NO.

EMS1

GENERAL NOTES:

- A. REFER TO E1 FOR GENERAL CONTRACTOR RESPONSIBILITIES. E.C. MAY USE CABLE TRAY FOR LOW VOLTAGE CABLES, SEE 2/E2.
- B. RUN CONDUIT FROM SENSORS TO BOTTOM OF STRUCTURE.
- C. REFRIGERATION UNITS TO BE CONNECTED TO EMS PANEL BY DOLLAR GENERAL REFRIGERATION CONTRACTOR.
- D. PLAN IS DIAGRAMMATIC ONLY. HOLD CONDUIT TIGHT TO EXPOSED MAIN GIRTS AND RUN AS HIGH AS POSSIBLE ALONG PERIMETER WALLS TO RECEIVING AREA.
- E. REFER TO M1 FOR LOCATIONS OF THERMOSTATS.

PLAN NOTES:

- 1. TEST/RESET STATION FOR STAND ALONE DUCT DETECTOR, ONE FOR EACH DEVICE, SEE KEY NOTE 3 ON SHEET 'E1'. 2. SIMPLEX #4098-8842 IS SPECIFIED WITH PIEZO AND LED INDICATOR LIGHT.
- 2. PHONE LINE #1 - TWO RJ-11 PORTS. ONE (1) LOCATED IN OFFICE W/ RJ-45 DATA JACK COMBO AND ONE (1) AT REGISTER. 24 GA. CAT 5, 4-PAIR TWISTED WIRE ONLY. USE BLUE AND BLUE & WHITE WIRES. HOOK TO LINE #1 TERMINAL IN RJ-11 JACK EACH PHONE JACK TO HAVE DEDICATED, SEPARATE HOME RUN TO DMARC. LABEL AS "PHONE" AT THE DESTINATION AND AT DMARC. PHONE COMPANY PROVIDES FINAL HOOK UP TO DMARC ONLY PHONE LINE #2 - RJ-11 PHONE JACK SUPPLIED AND WIRED BY CONTRACTOR.
- 3. EMS REFRIGERATION PANEL CX E2 400. PANEL BY OTHERS. CONNECTION FROM THIS PANEL TO HVAC AND LIGHTING PANEL BY OTHERS. ELECTRICAL CONTRACTOR TO RUN AN EMPTY 1-1/2" C. WITH PULL ROPE BETWEEN THE TWO PANELS.

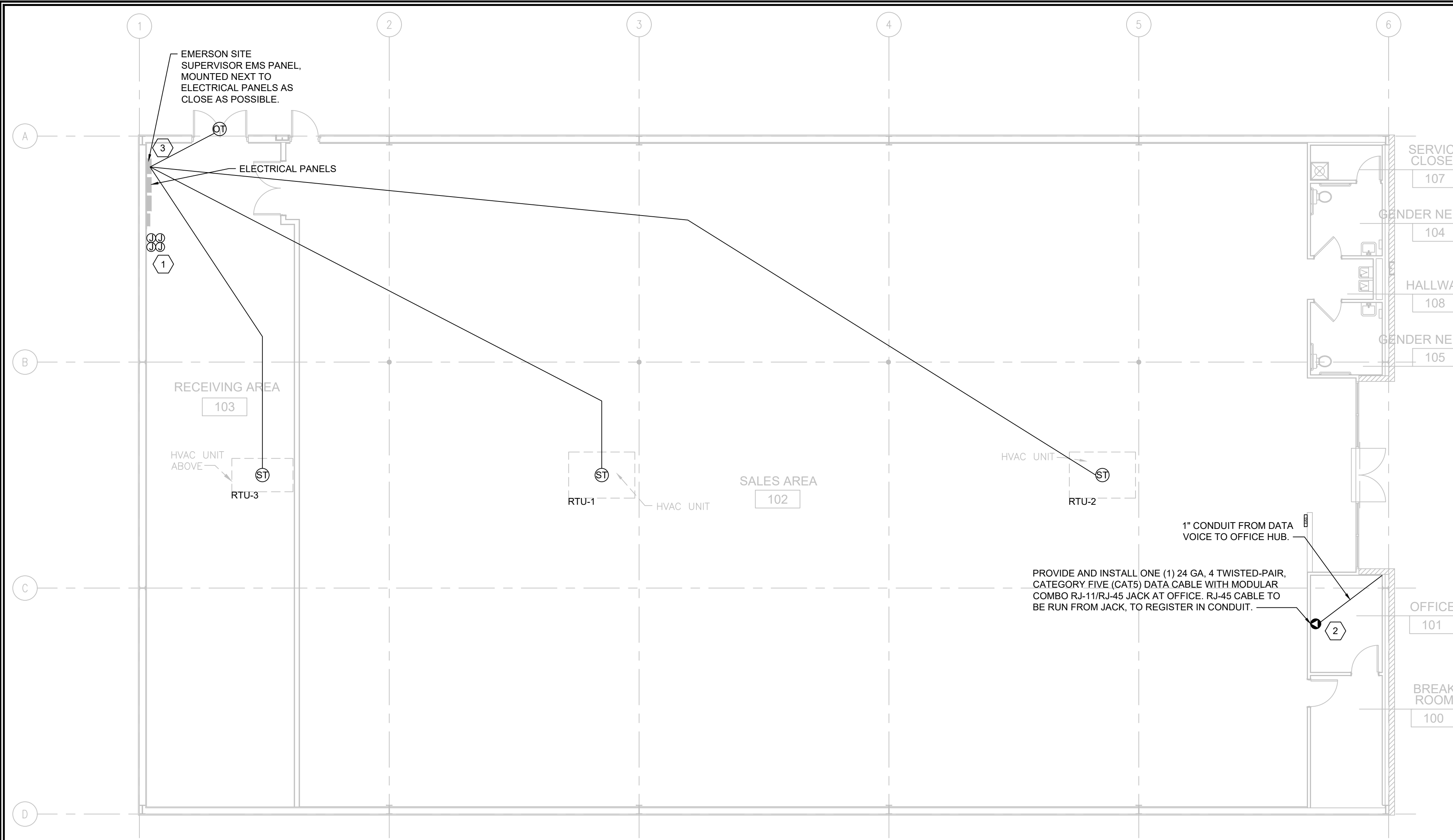
EMS NOTES:

- A. EMS SUPPLIER NOTE: CUSTOMIZED DOLLAR GENERAL EMS PANEL REQUIRES STORE #, CITY, STATE, ZIP CODE & QTY. OF HVAC UNITS OF THE INSTALL SITE WHEN ORDERING. EMS SYSTEMS INSTALLATION GUIDE WITH PHOTOS IS AVAILABLE ON NATIONAL ACCOUNT WEBSITE. ALL QUESTIONS PERTAINING TO THE EMS PANEL, SYSTEM INSTALLATION & SETUP SHOULD BE DIRECTED TO EMERSON'S DOLLAR GENERAL SUPPORT TEAM AT 770-425-2724.
- B. ALL SIGN & LIGHTING CIRCUITS MUST BE FED THROUGH THE DESIGNATED CONTACTORS AS NOTED ON THIS PAGE.
- C. ALL LOW VOLTAGE HVAC & DOOR SENSORS MUST BE CONNECTED TO THE PROPER TERMINAL. 24 GA. SHIELDED (SHIELD MUST BE GROUNDED) CABLE, BELDEN #8641, 2 CONDUCTOR WIRE OR ITS EQUIVALENT IS REQUIRED.
- D. COOLER & FREEZER HOME RUNS WILL BE TERMINATED AT ALL POINTS BY DOLLAR GENERAL REFRIGERATION DEPARTMENT.
- E. CONTACT EMERSON FOR FULL DETAILS. CONTACT NATIONAL ACCOUNT MANAGER BRAD KYLE, (770) 425-2724 OPTION 4. BRAD.KYLE@EMERSON.COM

TESTING NOTES:

- A. TESTING OF HVAC UNITS THRU EMS PANEL IS ACCOMPLISHED BY SIMPLY WARMING UP OR COOLING DOWN A SPACE TEMPERATURE SENSOR (USING A BLOW DRYER OR ELECTRONIC EQUIPMENT DUSTER AEROSOL) AND WATCH THE FAN, HEAT AND COOL STAGES CYCLE ON AND OFF. THIS REQUIRES TWO PEOPLE AT ALL TIMES...ONE TO WATCH THE SCREEN AND THE OTHER TO WATCH OPERATION OF THE AHU. WHEN COMPLETE, PRESS THE HOME BUTTON TO RETURN TO THE MAIN SCREEN.
- B. EMS SYSTEM SHOULD BE TESTED FOR HVAC OPERATION, INTERIOR LIGHTING, EXTERIOR LIGHTING AND SIGN LIGHTING PRIOR TO CONTRACTOR'S ELECTRICAL POSSESSION DATE. USE OUTSIDE LIGHT AND SIGN LIGHT OVERRIDE FOR EXTERIOR TESTING.

DEVICE SCHEDULE					
SYMB	DESCRIPTION	CABLE TYPE	SUPPLIER	INSTALLER	NOTES
Ⓣ	OUTDOOR AIR TEMP MOUNTED 8'-0" A.F.F.	BELDEN 8761 OR EQUIVALENT (22AWG, 2C, STRANDED, SHIELDED)	EMS SUPPLIER	GENERAL CONTRACTOR	(1) PER RECEIVING ENTRY
Ⓢ	SUPPLY TEMP (501-1121) IN SUPPLY DUCT	BELDEN 8761 OR EQUIVALENT (22AWG, 2C, STRANDED, SHIELDED)	EMS SUPPLIER	GENERAL CONTRACTOR	(1) PER HVAC UNIT
Ⓞ	RJ-11/RJ-45 DATA JACK PHONE COMBO	CAT-5 DATA CABLE (24AWG, 4 TWISTED PAIR)	GENERAL CONTRACTOR	GENERAL CONTRACTOR	(1) AT OFFICE COMPUTER CART

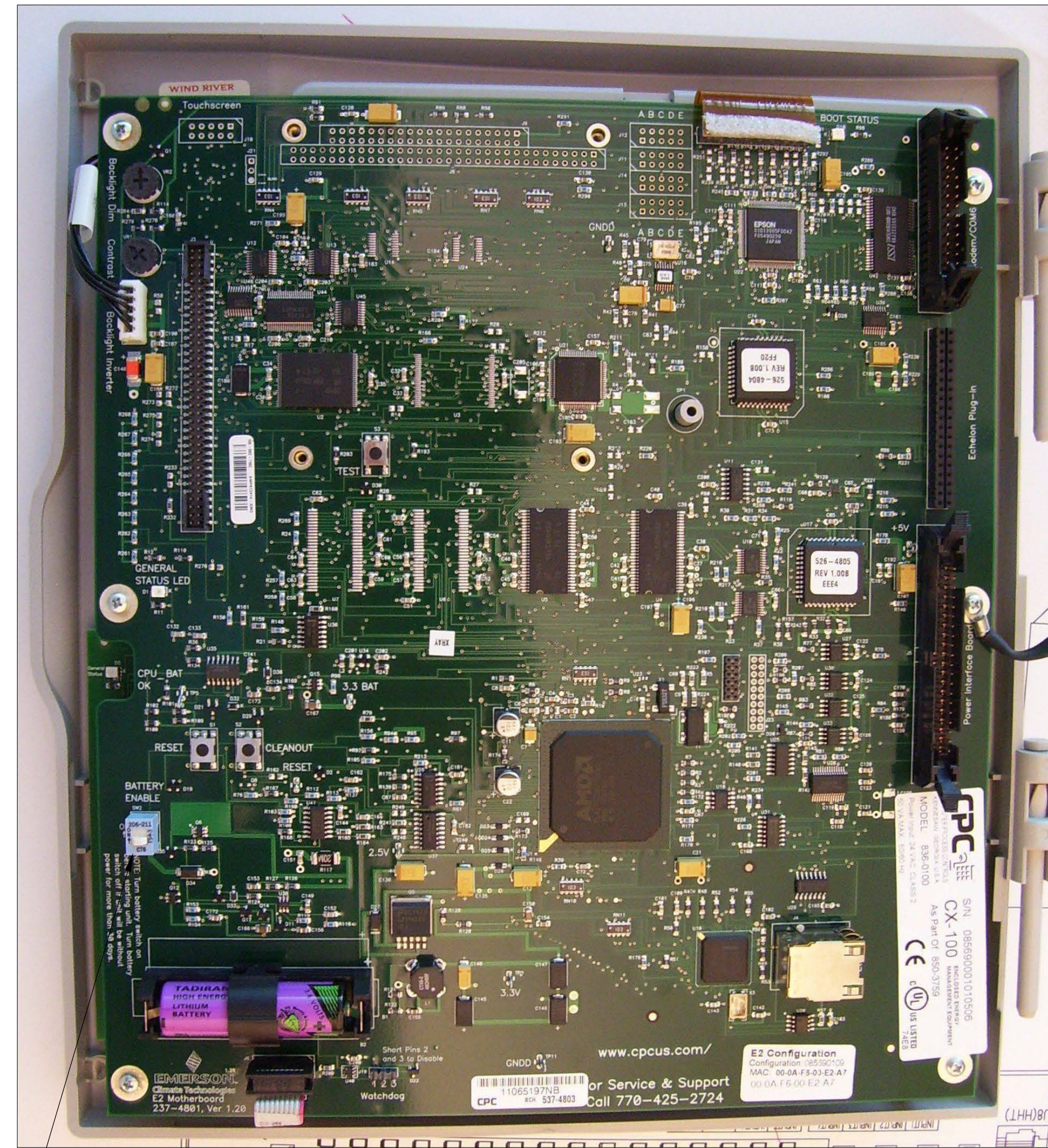


1 EMS LOW VOLTAGE PLAN
 EMS1 / SCALE: 1/8" = 1'-0"
 NORTH

This item has been digitally signed and sealed by Kenneth W. Hunter, P.E. on the date adjacent to the seal.
 Printed copies of this document are not considered signed and sealed and the signature must be verified on any electronic copies.

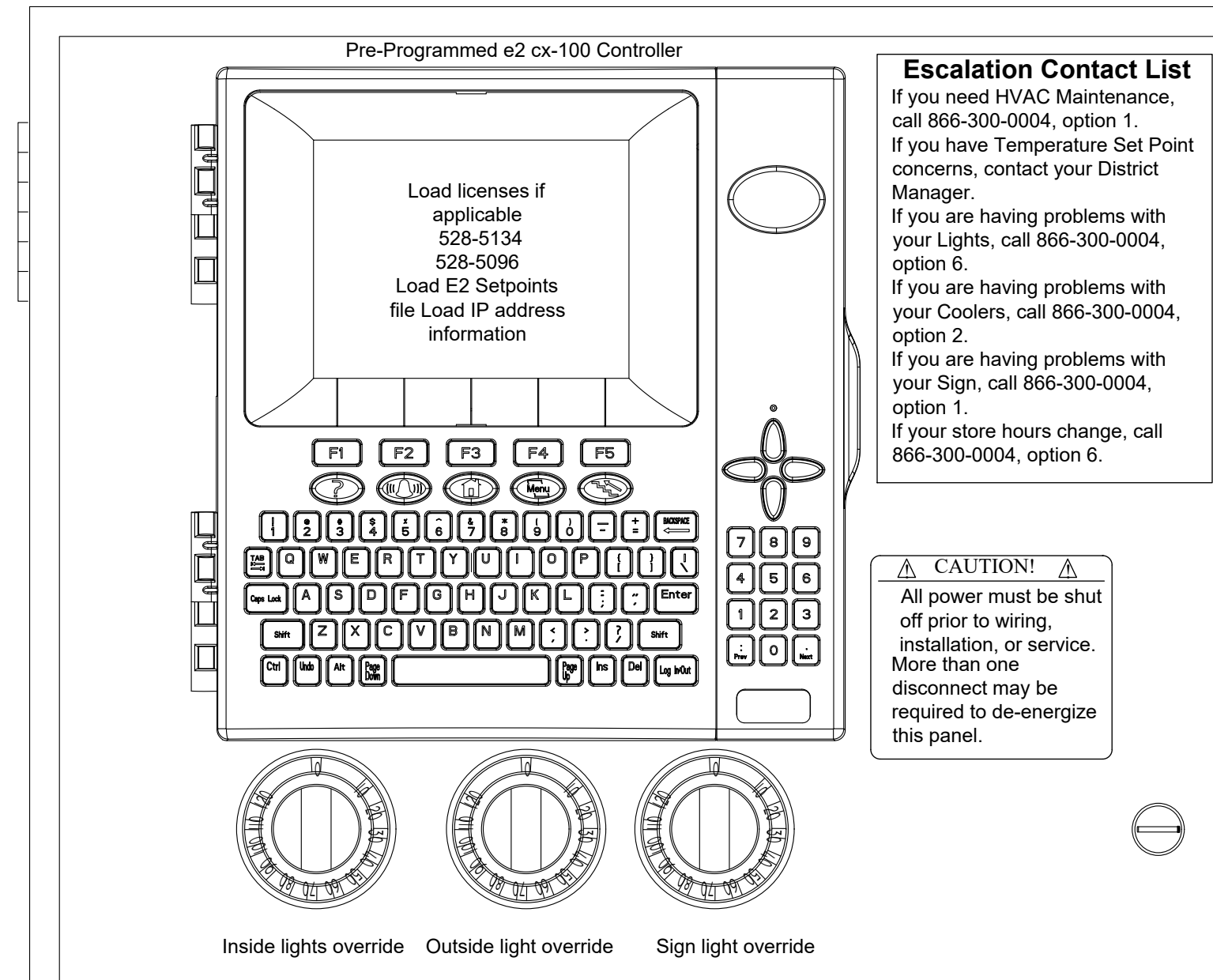


(352) 238-6366
 www.hdceng.com
 696 1st Ave N, Ste. 302
 St. Petersburg, FL 33701
 FL CA #51946
 GA CA #PEF007171



GENERAL CONTRACTOR TO ENSURE THAT THE BATTERY ENABLE IS SWITCHED TO THE "ON" POSITION

1 CPU TERMINAL DIAGRAM
EMS2 SCALE: N.T.S.



Verifying the Time and Date

- From the Home screen.
1. The Date is in the upper left corner of the Home screen.
 2. The Time is in the upper right corner of the Home screen.

HVAC Control Status

- Press the Home screen button.
- Select F1 AHU.
- Using the arrow keys, highlight the appropriated HVAC Unit, select enter.
- From the screen you can view:
 - i. Ctlz Temp (Control Temp - The sales floor temp).
 - ii. Values in [] represent the set point we are trying to maintain.
 - iii. Space Temp (Temperature at problem on Sales Floor).
 - iv. Supply Temp (Air Temp leaving AHU).
 - v. Status of Fan/Heat/Cool.
- When complete, select the Home button.

Lighting Status

- The status of Store Lights can be viewed in the bottom left corner of the Home page, or by the following:
 - Press the Home screen button.
 - Select F2 Lighting.
 - Highlight the appropriate Lighting Control, then select enter.
 - When complete, select the Home button.

Refrigerated Case Status

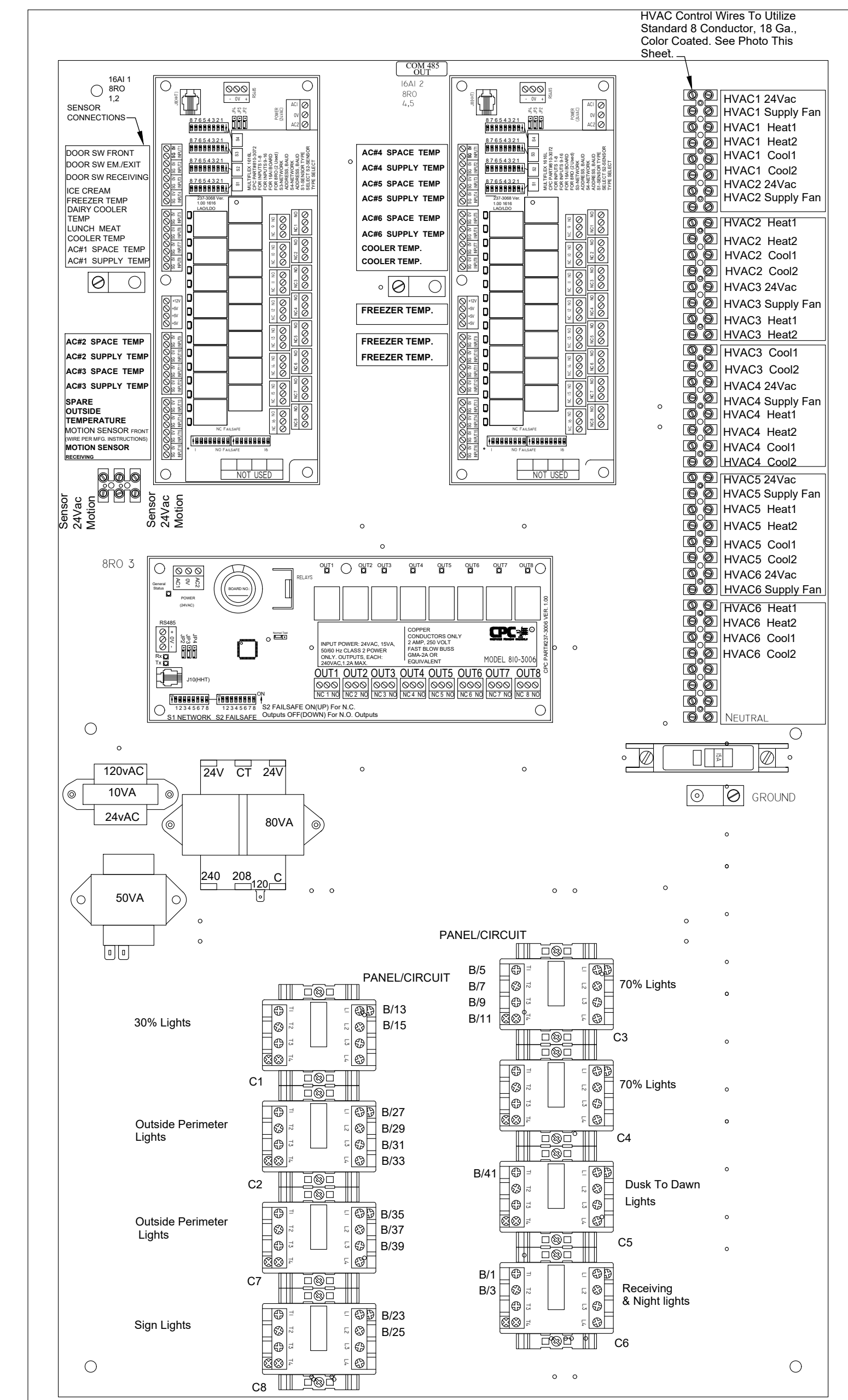
- Case Temperature can be viewed from the Home screen.
- To view a graph of the case temperature:
 - i. Highlight the Temp value and select enter.
 - ii. Select 1 for graph.
- To zoom select F5 Zoom-In.
- (Press F5 Zoom-In as many times as necessary, get to the desired scale/range).
- (Use the left and right arrow keys to move to the time/date range desired).
- When complete, select the Home button.

Alarm Status

- From the Home screen, select Alarm button.
1. Date: The date the alarm occurred.
 2. Time: The time the alarm occurred.
 3. State: Notice, Alarm or Fail.
 - Notices are general warnings that notify a user of minor errors.
 - Alarms are warnings about important system conditions that need immediate attention.
 - Fails are high priority conditions, warning the user of a controller or device failure.
 4. Property on Board and Point: The item that has generated the alarm.
 5. Message: The description of the notice, alarm or fail.
 - a. Using the up or down arrow keys, highlight the appropriate alarm and select F4 Expd. Info.
 - i. Expd. Info: Expanded Information will give the unit & detailed status on the alarm.
 - ii. When finished viewing detailed status, select enter.
 - When complete, select the Home button.

NOTE:
EMS SYSTEM SHOULD BE TESTED FOR HVAC OPERATION, INTERIOR LIGHTING, EXTERIOR LIGHTING AND SIGN LIGHTING PRIOR TO CONTRACTORS ELECTRICAL POSSESSION DATE. USE OUTSIDE LIGHT AND SIGN LIGHT OVERRIDE FOR EXTERIOR TESTING.

2 PROGRAMMER CONTROLLER
EMS2 SCALE: N.T.S.



TESTING NOTES

TESTING OF HVAC UNITS THRU EMS PANEL IS ACCOMPLISHED BY SIMPLY WARMING UP OR COOLING DOWN A SPACE TEMPERATURE SENSOR (USING A BLOW DRYER OR ELECTRONIC EQUIPMENT DUSTER AEROSOL) AND WATCH THE FAN, HEAT AND COOL STAGES CYCLE ON AND OFF. THIS REQUIRES TWO PEOPLE AT ALL TIMES...ONE TO WATCH THE SCREEN AND THE OTHER TO WATCH OPERATION OF THE AHU. WHEN COMPLETE, PRESS THE HOME BUTTON TO RETURN TO THE MAIN SCREEN.

EMS GENERAL NOTES

1. EMS SUPPLIER NOTE: CUSTOMIZED DOLLAR GENERAL EMS PANEL REQUIRES STORE #, CITY, STATE, ZIP CODE & QTY. OF HVAC UNITS OF THE INSTALL SITE WHEN ORDERING. EMS SYSTEMS INSTALLATION GUIDE WITH PHOTOS IS AVAILABLE ON NATIONAL ACCOUNT WEBSITE. ALL QUESTIONS PERTAINING TO THE EMS PANEL, SYSTEM INSTALLATION & SETUP SHOULD BE DIRECTED TO EMERSON'S DOLLAR GENERAL SUPPORT TEAM AT 770-425-2724.
2. ALL SIGN & LIGHTING CIRCUITS MUST BE FED THROUGH THE DESIGNATED CONTACTORS AS NOTED ON THIS PAGE.
3. ALL LOW VOLTAGE HVAC & DOOR SENSORS MUST BE CONNECTED TO THE PROPER TERMINAL. 24 GA. SHIELDED (SHIELD MUST BE GROUNDED) CABLE BELDEN #8641. 2 CONDUCTOR WIRE OR ITS EQUIVALENT IS REQUIRED.
4. COOLER & FREEZER HOME RUNS WILL BE TERMINATED AT ALL POINTS BY DOLLAR GENERAL REFRIGERATION DEPARTMENT.

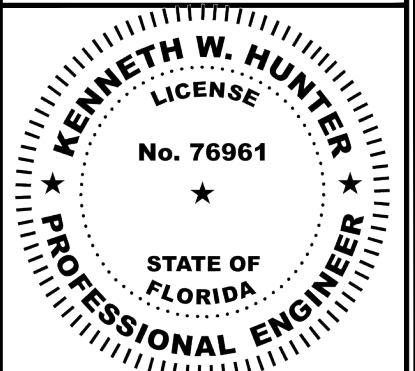
3 CONTROL WIRING DIAGRAM
EMS2 SCALE: N.T.S.

FOR REFERENCE ONLY

HDC (352) 238-6366
www.hdceng.com
Kenneth W. Hunter, P.E. on the date adjacent to the seal.
Hunter Design & CONSULTING FL CA #51946 GA CA #PEF007171

This item has been digitally signed and sealed by Kenneth W. Hunter, P.E. on the date adjacent to the seal.
Printed copies of this document are not considered signed and sealed and the signature must be verified on any electronic copies.

KENNETH W. HUNTER, P.E.
PROFESSIONAL ENGINEER
696 1ST AVE N, STE 200
ST. PETERSBURG, FL 33701
PE #76961



THESE DRAWINGS HAVE BEEN PREPARED IN PART, BASED UPON INFORMATION FURNISHED BY OTHERS. THE DESIGNER ASSUMES NO RESPONSIBILITY FOR THE ACCURACY OF THESE DRAWINGS FOR ANY ERRORS OR OMISSIONS THAT MAY HAVE BEEN INCORPORATED INTO THE PROJECT AS A RESULT OF INCORRECT INFORMATION. ALL WORK SHALL COMPLY WITH ANY AND ALL APPLICABLE CODES AND ORDINANCES. SUPERINTENDENTS ARE RESPONSIBLE FOR THE ACCURACY OF THE INFORMATION, DESIGN AND BUILDING TECHNIQUES HELD WITHIN THESE DRAWINGS. THE EXCLUSIVE PROPERTY OF THE PARTIES NOTED ON THIS TITLE BLOCK.



DOLLAR GENERAL
4924 NW US HWY 41
LAKE CITY, FL 32055
STORE # 180 - PLAN 'DGP-B' - 10,640 SQ. FT.
2019 PROTOTYPE

DRAWING DATE / DRAWN BY:
9/4/24 - JTL
REVISION DATE / REVISED BY:
PROJECT NUMBER:
4000.257
DRAWING TITLE:
EMS PANEL CONTROLS
SHEET NO.

EMS2

