

REVISIONS	



**SITE PREPARATION:** SITE ANALYSIS AND PREPARATION ARE NOT PART OF THIS PLAN AND ARE RESPONSIBILITY OF THE OWNER. SITE INSPECTION BY BUILDER OR BUILDING OFFICIAL SHALL DETERMINE IF THERE IS ANY EVIDENCE OF UNSUITABLE BEARING MATERIALS. IF THERE IS ANY QUESTION, CALL A GEOTECHNICAL ENGINEER TO ASSURE THAT EXPANDING CLAYS AND OTHER PROBLEMATIC SOIL CONDITIONS DO NOT EXIST OR TO ALLOW MITIGATION SHOULD THEY EXIST. ALL FILL UNDER STRUCTURAL ELEMENTS SHALL BE CLEAN SAND/SOIL FILL, FREE FROM DEBRIS AND ORGANIC MATERIALS COMPACTED TO 95% OF MAXIMUM DRY BEARING CAPACITY. IN LIFTS OF NOT MORE THAN 6 INCHES. IT IS THE OWNER'S/BUILDER'S RESPONSIBILITY TO VERIFY EXISTING SOIL AND CLEAN FILL ARE COMPACTED STABLE SOIL CONDITIONS WITH 1000 PSF BEARING CAPACITY OR TO REQUEST FOUNDATION DESIGN BASED ON ACTUAL SITE CONDITIONS.

**FOUNDATION:** THE OWNER HAS NOT YET PROVIDED A GEOTECHNICAL REPORT TO THE ENGINEER. ASSUMED SAFE BEARING CAPACITY OF 2000 PSF SHALL BE APPROVED BY THE OWNER. FOOTINGS AND SLAB ARE TO BEAR ON FIRM UNDISTURBED EARTH OR CLEAN SAND/SOIL FILL, FREE FROM DEBRIS AND ORGANIC MATERIALS COMPACTED IN LIFTS OF NOT MORE THAN 6 INCHES. WHERE UNACCEPTABLE MATERIAL OCCURS, EXCAVATE AND REPLACE WITH ENGINEERED FILL. FOUNDATION WORK MUST BE COORDINATED WITH UNDERGROUND UTILITIES. FOOTINGS SHALL BE LOWERED WHERE REQUIRED TO AVOID UTILITIES. TO MINIMIZE WEATHERING, THE LAST 6 INCHES OF EXCAVATION FOR ALL FOOTINGS SHALL BE MADE IMMEDIATELY PRIOR TO PLACEMENT OF FOOTINGS.

**CONCRETE:** MINIMUM COMPRESSIVE STRENGTH OF CONCRETE AT 28 DAYS SHALL BE  $f'_c = 3000$  PSI. WHERE EXCESS WATER IS ADDED TO THE CONCRETE SO THAT ITS SERVICEABILITY IS DEGRADED, THE ATTAINMENT OF REQUIRED STRENGTH SHALL NOT RELEASE THE CONTRACTOR FROM PROVIDING SUCH MODIFICATIONS AS MAY BE REQUIRED BY THE ENGINEER TO PROVIDE A SERVICEABLE MEMBER OR SURFACE. ALL CONCRETE SHALL BE VIBRATED. NO REPAIR OR RUBBING OF CONCRETE SURFACES SHALL BE MADE PRIOR TO INSPECTION BY AND APPROVAL OF THE ENGINEER, OWNER, OR HIS REPRESENTATIVE.

**FIBER CONCRETE SLAB:** CONCRETE SLABS ON GROUND CONTAINING SYNTHETIC FIBER REINFORCEMENT. FIBER LENGTHS SHALL BE 1/2 INCH TO 2 INCHES IN LENGTH. DOSAGE AMOUNTS SHALL BE FROM 0.75 TO 1.5 POUNDS PER CUBIC YARD IN ACCORDANCE WITH THE MANUFACTURER'S RECOMMENDATIONS. SYNTHETIC FIBERS SHALL COMPLY WITH ASTM C 1116. THE MANUFACTURER OR SUPPLIER SHALL PROVIDE CERTIFICATION OF COMPLIANCE WITH ASTM C 1116 WHEN REQUESTED BY THE BUILDING OFFICIAL.

**WELDED WIRE REINFORCED SLAB:** 6"x6" W1.4XW1.4, FB = 85KSI, WELDED WIRE REINFORCEMENT FABRIC (W.W.M.) CONFORMING TO ASTM A185, LOCATED IN THE MIDDLE OF THE SLAB; SUPPORTED WITH APPROVED MATERIALS OR SUPPORTS AT SPACING NOT TO EXCEED 3'.

**REBAR:** ASTM A 615, GRADE 60, REINFORCED BARS, FY = 60 KSI. ALL LAP SPLICES 40" DB (30" FOR #5 BARS); UNO. ALL REINFORCEMENT SHALL BE DETAILED AND PLACED IN ACCORDANCE WITH ACI 315-95 UNLESS NOTED OTHERWISE. ALL TENSION DEVELOPMENT LENGTHS SHALL BE 30 INCHES.

**CONCRETE CONTROL JOINTS:** WHERE SPECIFIED, SAWN CONTROL JOINTS IN SLAB-ON-GRADE SHALL BE CUT IN ACCORDANCE WITH ACI 302. JOINTS SHALL BE CUT WITHIN 12 HOURS OF SLAB PLACEMENT. LENGTH/WIDTH RATIOS OF SLAB AREAS SHALL NOT EXCEED 1.5 AND TYPICAL SPACING OF CUTS TO BE 12FT. DO NOT CUT W.W.M. OR REINFORCING STEEL. (RECOMMENDED LOCATION OF CONTROL JOINTS IS SUBJECT TO OWNER AND CONTRACTOR'S APPROVAL. THE CONTROL JOINTS ARE NOT INTENDED TO PREVENT CRACKS BUT RATHER TO ENCOURAGE THE SLAB TO CRACK ON A GIVEN LINE.)

BASED ON COLUMN REACTIONS BY AMERICAN STEEL BUILDINGS SEALED ENGINEERING FOR PROJECT 30708316A, DATED 5/24/2007  
 NOTE: THIS FOUNDATION DESIGN MEETS ALL REQUIREMENTS FOR WIND LOADS PER FBC2004, SECTION 1609, 110 MPH BASIC WIND SPEED, EXPOSURE B, 1.0 USE FACTOR; COLUMN PAD LOCATIONS ARE TYPICAL, EXACT ANCHOR BOLT LOCATIONS AND SIZES ARE PER METAL BUILDING SEALED ENGINEERING ANCHOR BOLT PLAN.

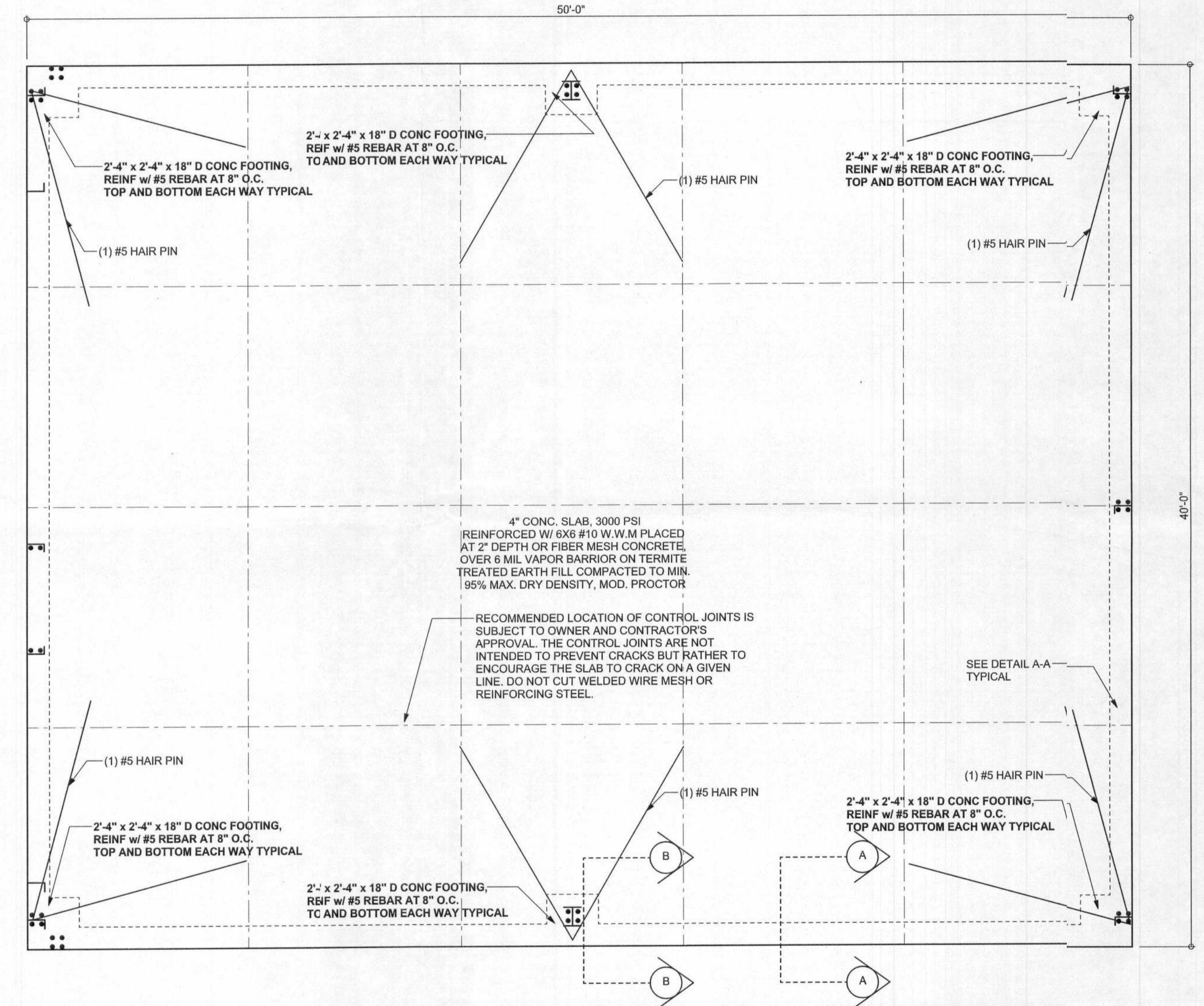
- ANCHOR BOLTS AND REINFORCEMENT - 18" A-307 ANCHOR BOLTS, BOLT DIAMETER, AND LOCATION PER METAL BUILDING SEALED ENGINEERING DESIGN DRAWINGS. THE ANCHOR BOLTS TO BOTTOM REINFORCING STEEL. REINFORCING BARS SHALL CONFORM TO ASTM A615, GRADE 60. WELDED WIRE FABRIC SHALL CONFORM TO ASTM A185. DETAILING OF CONCRETE REINFORCEMENT AND ACCESSORIES SHALL BE IN ACCORDANCE WITH ACI DETAILING MANUAL, 9F-96, AND ACI 318. REINFORCING SHALL NOT BE HEATED OR WELDED. REINFORCING SHALL BE APPROVED BY ENGINEER OR HIS REPRESENTATIVE BEFORE CONCRETE IS PLACED. PROVIDE 3" COVER FOR EXPOSED FOOTING SURFACES, 2" COVER FOR FORMED EXPOSED SURFACES, 3/4" COVER FOR NOT EXPOSED SURFACES. LAP SPLICES SHALL BE 48 BAR DIAMETERS. TOP STEEL LAPS SHALL OCCUR AT MID SPAN; BOTTOM LAPS AT COLUMNS.

- CONCRETE - MINIMUM COMPRESSIVE STRENGTH OF CONCRETE AT 28 DAYS SHALL BE  $f'_c = 3000$  PSI. WHERE EXCESS WATER IS ADDED TO THE CONCRETE SO THAT ITS SERVICEABILITY IS DEGRADED, THE ATTAINMENT OF REQUIRED STRENGTH SHALL NOT RELEASE THE CONTRACTOR FROM PROVIDING SUCH MODIFICATIONS AS MAY BE REQUIRED BY THE ENGINEER TO PROVIDE A SERVICEABLE MEMBER OR SURFACE. ALL CONCRETE SHALL BE VIBRATED. NO REPAIR OR RUBBING OF CONCRETE SURFACES SHALL BE MADE PRIOR TO INSPECTION BY AND APPROVAL OF THE ENGINEER, OWNER OR HIS REPRESENTATIVE.

- CONTROL JOINTS - SAWN CONTROL JOINTS IN SLAB-ON-GRADE SHALL BE CUT IN ACCORDANCE WITH ACI 302. JOINTS SHALL BE CUT WITHIN 12 HOURS OF SLAB PLACEMENT. THE LENGTH / WIDTH RATIOS OF SLAB AREAS SHALL NOT EXCEED 1.5. DO NOT CUT W.W.M. OR REINFORCING STEEL. (RECOMMENDED LOCATION OF CONTROL JOINTS IS SUBJECT TO OWNER AND CONTRACTOR'S APPROVAL. THE CONTROL JOINTS ARE NOT INTENDED TO PREVENT CRACKS BUT RATHER TO ENCOURAGE THE SLAB TO CRACK ON A GIVEN LINE.)

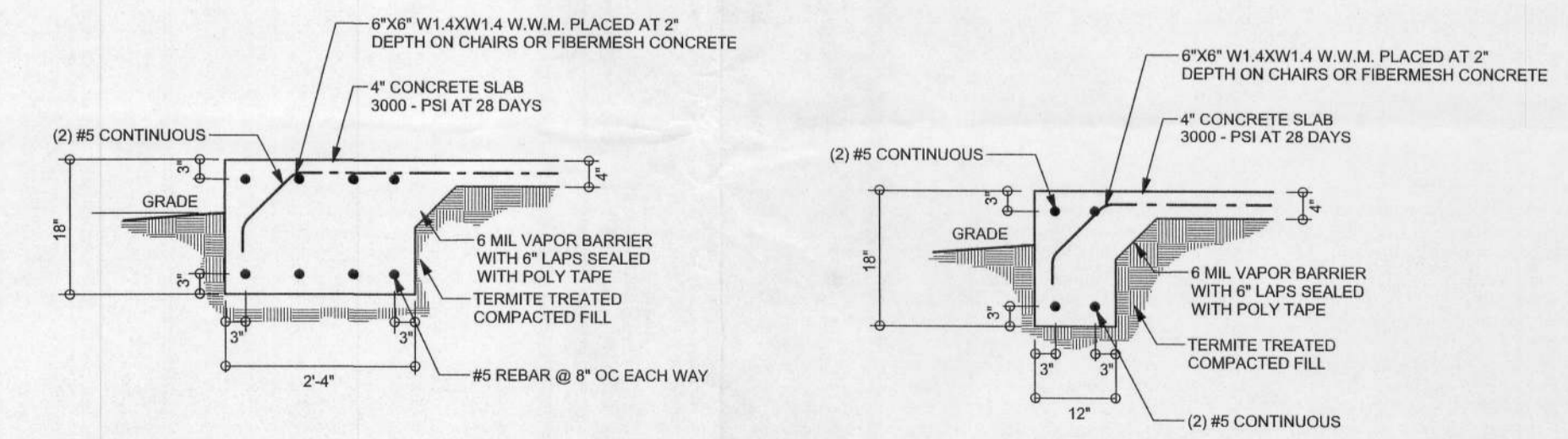
- FOUNDATION - THE OWNER HAS NOT YET PROVIDED A GEOTECHNICAL REPORT TO THE ENGINEER. ASSUMED SAFE BEARING CAPACITY OF 2000 PSF SHALL BE CONFIRMED IN THE FIELD BY A REGISTERED GEOTECHNICAL ENGINEER OR SHALL BE APPROVED BY THE OWNER. FOOTINGS AND SLABS ARE TO BEAR ON FIRM UNDISTURBED EARTH OR APPROVED CONTROLLED FILL. WHERE UNACCEPTABLE MATERIAL OCCURS, EXCAVATE AND REPLACE WITH ENGINEERED FILL.

- UNLESS OTHERWISE SPECIFIED ALL MATERIALS AND CONSTRUCTION ARE TO MEET LOCAL BUILDING CODES.



**FOUNDATION PLAN**  
 SCALE: 1/4" = 1'-0"  
 NOTE: SEE ANCHOR BOLT PLAN FOR DIMENSIONS

12' x 18' x 37' x 100 = 5550  
 5'-0" x 4' x 37' x 100 = 6166  
 M-20321  
 .3068 x 2 = 0.6136  
 0.6136 x 40,000 x .6 x 1.25 = 18408  
 0.6136 x 40,000 x .6 x 0.25 = 3681



**SECTION B-B**  
 SCALE: 1/2" = 1'-0"

**SECTION A-A**  
 SCALE: 1/2" = 1'-0"

FINAL/LOAD ENGINEER: Mark Disosway  
 P.E. No. 53915, P.O. Box 866, Lake City, FL  
 32056, 386-754-5419

**MARK DISOSWAY**  
 P.E. 53915

01/06/07

SEAL

**NORTH FLORIDA EXTERIORS, LLC.**

**SYLVIA CALCANO FOUNDATION PLAN**

ADDRESS:  
 227 SW Kelliehe Glen,  
 Lake City FL 32256  
 Mark Disosway P.E.  
 P.O. Box 866  
 Lake City, Florida 32056  
 Phone: (386) 754 - 5419  
 Fax: (386) 754 - 6749  
 Email: mdpe@bellsouth.net

PRINTED DATE:  
 June 01, 2007  
 DRAWN BY: Ben Sparks  
 CHECKED BY:

FINALS DATE:  
 01/ Jun / 07

**JOB NUMBER:**  
 705315

**DRAWING NUMBER**  
 F1  
 OF 1 SHEET