

CODE INFORMATION

CODE VERSION	FBC 2023 8th Edition, ASCE-7-22
MANUFACTURER	CARPORTS ANYWHERE
BUILDING TYPE	UTILITY STRUCTURE
CONSTRUCTION TYPE	II-B
RISK CATEGORY	I
FIRE PROTECTION	NONE
FIRE SUPPRESSION SYSTEM	NONE
OCCUPANCY	UTILITY, U
WIND SPEED	Vult-112mph
EXPOSURE	C
ENCLOSURE	ENCLOSED
INTERNAL PRESSURE COEFF.	+/- 0.18
IMPORTANCE FACTOR	1.0
ROOF DEAD LOAD	10PSF
ROOF LIVE LOAD	20PSF OR 300lb P.L.
FLOOR DEAD LOAD	10PSF
FLOOR LIVE LOAD	50PSF
"R" RATING OF WALLS, FLOOR, ROOF	N/A
MODULES PER BUILDING	1
HURRICANE PROTECTION USAGE	NO
HURRICANE SHELTER USAGE	NO
SQUARE FOOTAGE	2,000 SQ. FT.

REVISIONS

REV	DESCRIPTION	DATE	BY
1	FOOTER SIZE	1/30/25	MTB

DRAWN BY:	MTB
DATE:	11/19/24
LOCATION:	245 SW Magnolia Ln, Fort White
SIZE:	40'L X 50'W X 12'H

TITLE: PLAN VIEW - C Garman

2/1/25

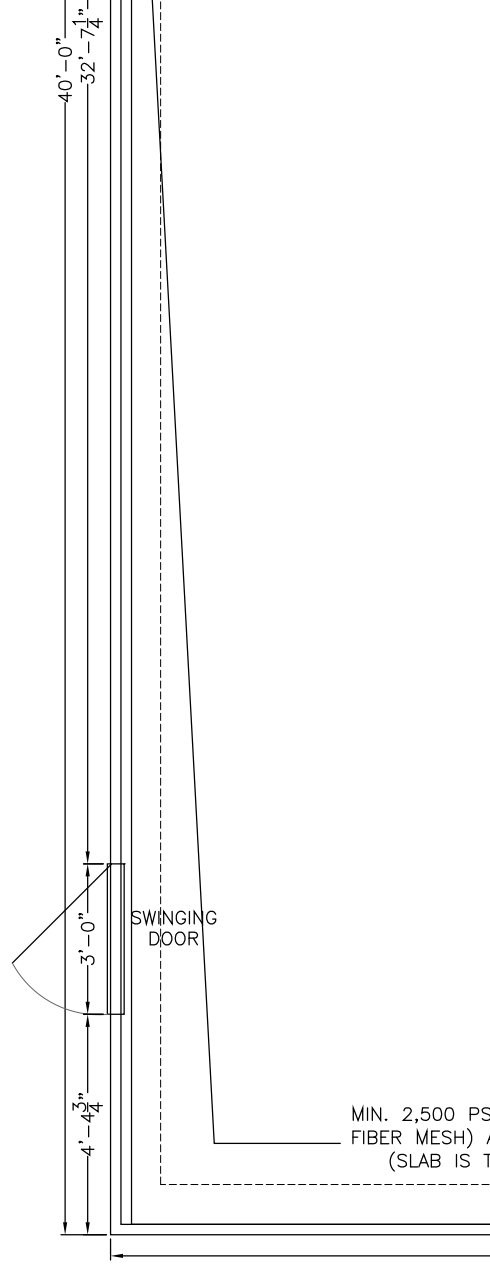
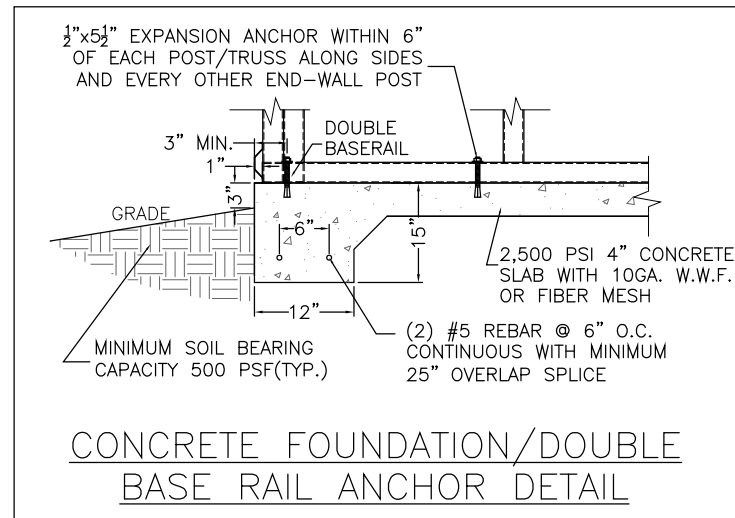
Matthew T. Baldwin P.E.
Florida License #64608

Sheet: 1 OF 4

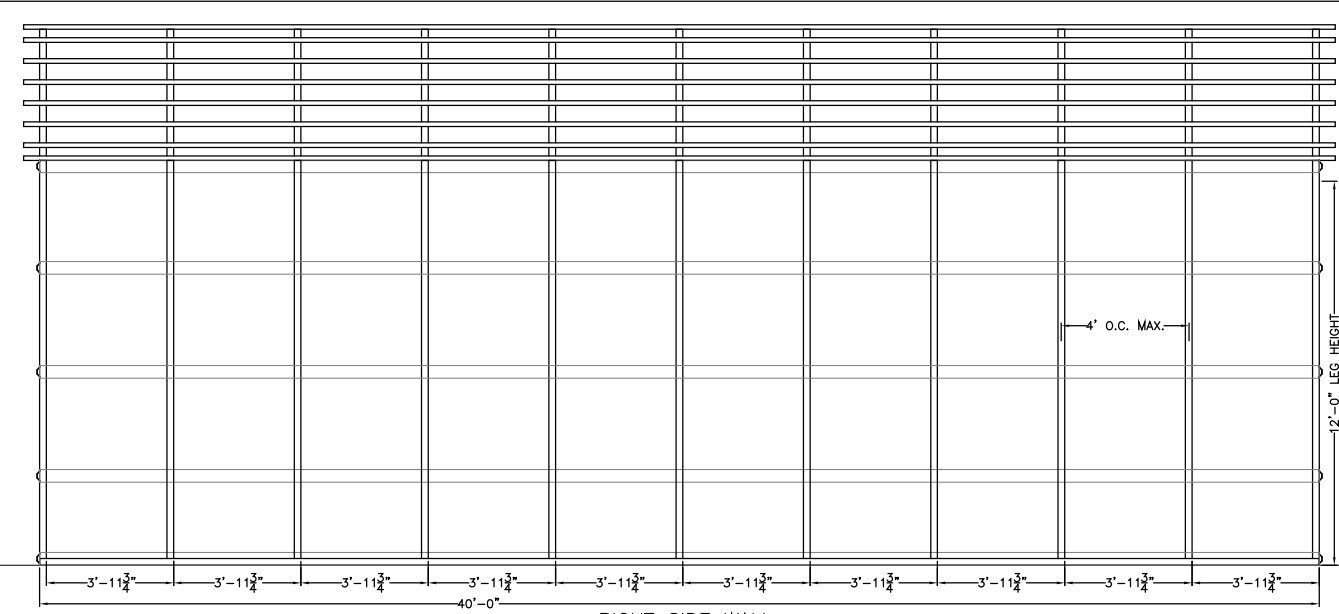
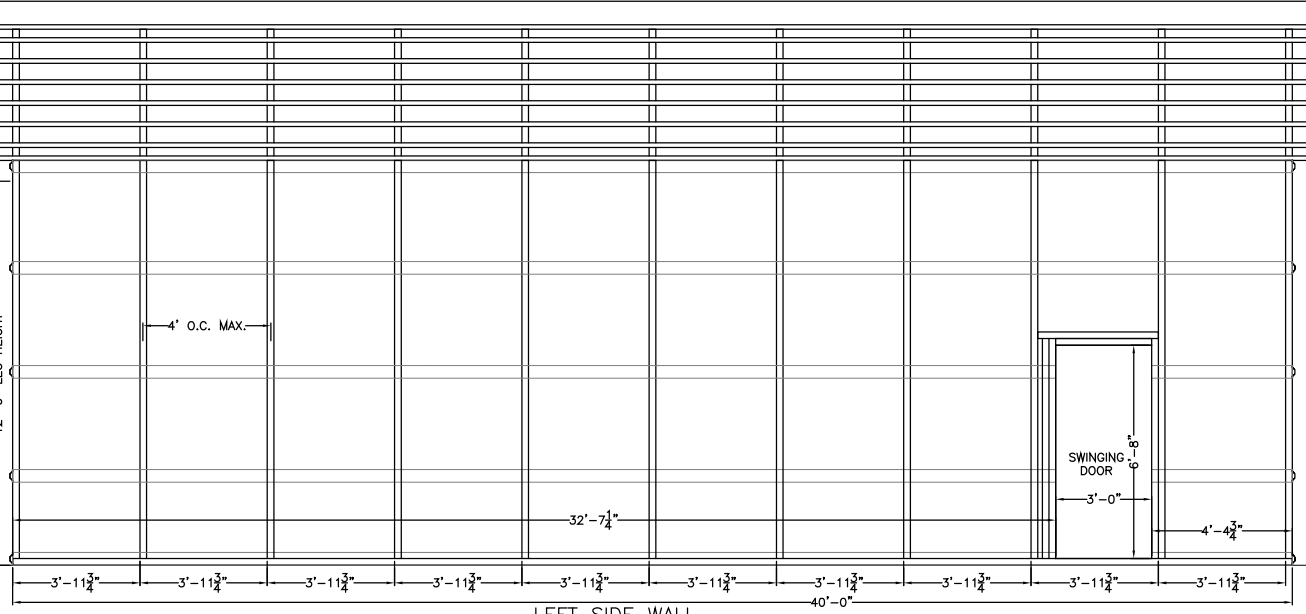
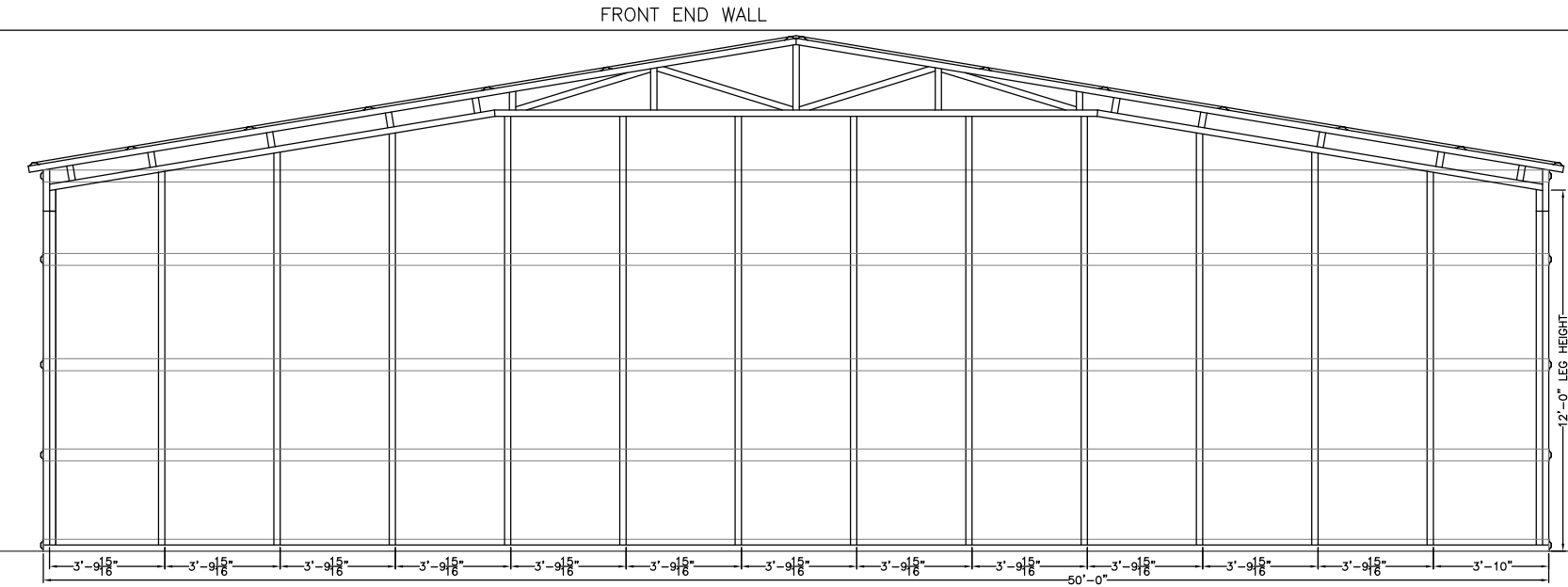
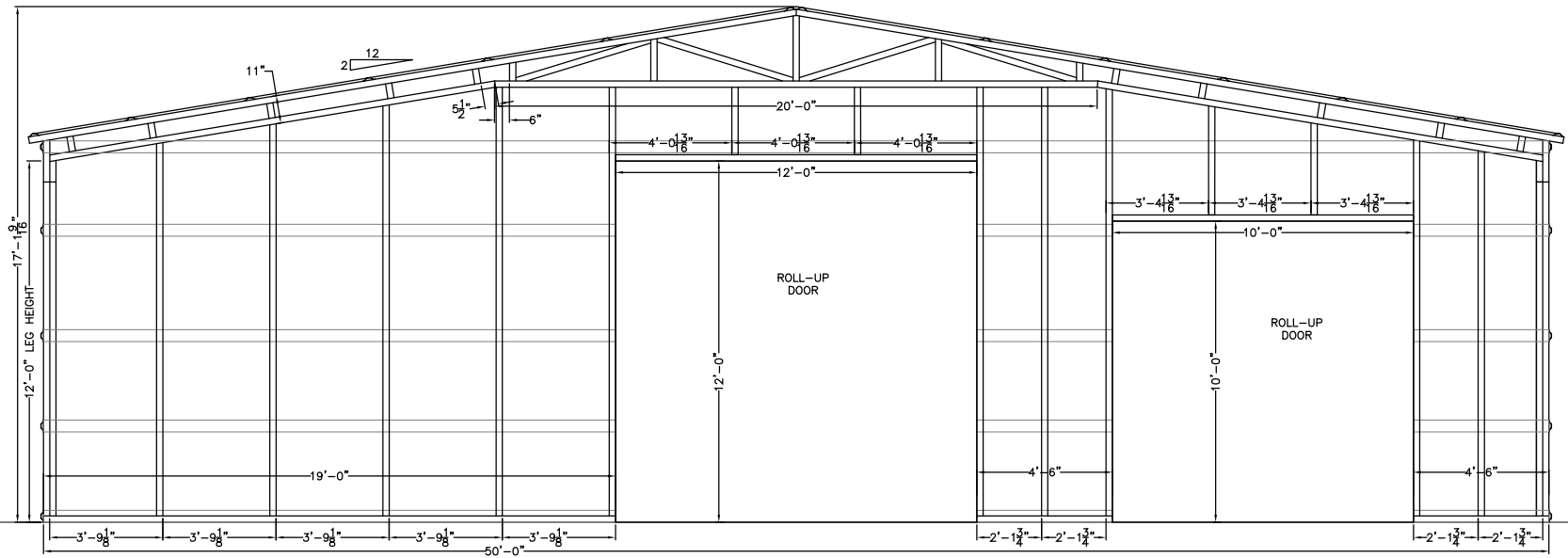
50'-0"

1. THESE PLANS PERTAIN ONLY TO THE STRUCTURE, INCLUDING MAIN WIND FORCE RESISTING SYSTEM, COMPONENTS AND CLADDING, AND BASE RAIL ANCHORAGE. OTHER DESIGN ISSUES, INCLUDING BUT NOT LIMITED TO PLUMBING, ELECTRICAL, INGRESS/EGRESS, PROPERTY SET-BACKS, FINISH FLOOR ELEVATION AND SLOPE, OR OTHER LOCAL ZONING REQUIREMENTS ARE THE RESPONSIBILITY OF OTHERS.
2. THIS STRUCTURE IS DESIGNED AS A NON-HABITABLE UTILITY/STORAGE BUILDING (RISK CATEGORY I) CAPABLE OF SUPPORTING DEAD LOAD OF THE STRUCTURE AND APPLICABLE LIVE AND WIND LOADS. IMPROVEMENTS NOT SPECIFICALLY ADDRESSED HEREIN, INCLUDING DOORS, WINDOWS, OR OTHER COMPONENTS NOT LISTED IN THE FBC APPROVED PRODUCTS LIST, AND NOT PROVIDED OR INITIALLY INSTALLED, WHICH EXERT ADDITIONAL LOADS ON THE STRUCTURE SHALL BE AT THE OWNER'S RISK. THE MANUFACTURER NOR THE ENGINEERING DESIGN SHALL NOT BE RESPONSIBLE FOR STRUCTURAL DAMAGE OR FAILURE DUE TO THE APPLICATION OF ADDITIONAL LOADS.
3. THIS BUILDING IS EXEMPT FROM THE FBC ENERGY CONSERVATION CODE PER SECTION C101.4.2.
4. WIND SPEED IS BASED ON RISK CATEGORY AND IS PER FBC FIGURES 1609.3(1,4)/ASCE REFERENCED WEB SITE (ASCEHAZARDTOOL.ORG) WITH ALLOWED INTERPOLATION.
5. ALL STEEL TUBING SHALL BE 50 KSI STEEL AND MEETS/EXCEEDS GALVANIZATION PER ASTM A1003/A1003M-15.
6. PLUMBING, ELECTRICAL, INGRESS/EGRESS, PROPERTY SET-BACKS, AND/OR OTHER LOCAL CODE REQUIREMENTS ARE THE RESPONSIBILITY OF THE OWNER.
7. FIELD FRAMING CONNECTIONS SECURED WITH #12-14x3/4" SELF-DRILLING SCREWS & 16GA. BRACKETS AS NEEDED.
8. ALL SHOP FRAMING CONNECTIONS ARE TO BE WELDED. NO WELDING ONSITE. ALL WELDING DONE IN SHOP BY A CERTIFIED WELDER.
9. CONCRETE EXPANSION ANCHORS & GROUND ANCHORS ARE TO BE MINIMUM 1/2" DIAMETER & 2,500LB TENSILE STRENGTH.
10. 14GA. FRAMING IS 2.5"x2.5" TUBE STEEL. NIPPLES ARE 2.25"x2.25" TUBE STEEL.
11. ANY FILL DIRT NEEDED IS TO BE COMPACTED TO 95%. CONCRETE OR GROUND SURFACE TO BE LEVEL WITHIN 2% MAX.

NOTES:
SUB-GRADE SOILS:
 -VAPOR BARRIER NOT REQUIRED/EXEMPTED PER SECTION 1907.1 EXCEPTIONS.
 -TERMITE PROTECTION NOT REQUIRED AS THERE IS NO WOOD/CELLULOSE FOR ANY PART OF THIS STRUCTURE.
 -BOTTOM OF CONCRETE FOOTING SHALL BE MINIMUM OF 12" BELOW UNDISTURBED OR ENGINEERED GRADE
CONCRETE:
 -MINIMUM 2,500 PSI COMPRESSIVE STRENGTH AT 28 DAYS
 -CONTROL JOINT SPACING AT 24-36 TIMES THE SLAB THICKNESS OR 15' MAXIMUM
 -ALL OPEN AREAS OF CONCRETE OUTSIDE OF THE PROPOSED STRUCTURE SHALL BE DESIGNED TO SLOPE AWAY FROM THE STRUCTURE
REINFORCING STEEL (REBAR) REQUIREMENTS:
 -MINIMUM GRADE 40 STEEL
 -REBAR MAY BE BENT IN SHOP OR FIELD PROVIDED:
 -THE REBAR IS BENT COLD
 -THE DIAMETER OF THE BEND MEASURED ON THE INSIDE DOES NOT EXCEED 6-BAR DIAMETERS: AND
 -REINFORCEMENT PARTIALLY EMBEDDED IN CONCRETE SHALL NOT BE FIELD BENT EXCEPT IN CASES WHERE DOWELS NEED TO BE BENT TO ALIGN WITH A VERTICAL CELL. THESE REBAR MAY BE BENT NOT TO EXCEED TO SLOPE OF 1" HORIZONTALLY TO 6" VERTICALLY.
-COVER:
 -3" COVER MINIMUM WHERE THE CONCRETE IS CAST AGAINST AND PERMANENTLY IN CONTACT WITH SOIL OR WEATHER, AND 1 1/2" ELSEWHERE. REBAR EMBEDDED IN GROUTED CELLS SHALL HAVE A MINIMUM CLEAR DISTANCE OF 1/4" FOR FINE GROUT, AND 1/2" FOR COARSE GROUT BETWEEN REBAR AND ANY FACE OF A CELL. REBAR USED IN MASONRY WALLS SHALL HAVE A MASONRY COVER (INCLUDING GROUT) OF NOT LESS THAN 2" FOR MASONRY UNITS WITH FACE EXPOSED TO EARTH OR WEATHER, AND 1 1/2" FOR MASONRY UNITS NOT EXPOSED TO EARTH OR WEATHER.
GALVANIZATION:
 -METAL ACCESSORIES FOR USE IN EXTERIOR WALL CONSTRUCTION AND NOT DIRECTLY EXPOSED TO WEATHER SHALL BE GALVANIZED IN ACCORDANCE WITH ASTM A 153, CLASS B-2. METAL PLATE CONNECTORS, SCREWS, BOLTS, AND NAILS EXPOSED DIRECTLY TO WEATHER SHALL BE STAINLESS STEEL OR HOT DIPPED GALVANIZED.



MIN. 2,500 PSI 4" CONCRETE SLAB WITH 10GA. W.W.F. (OR FIBER MESH) AND 12"x15" REINFORCED FOOTER PERIMETER (SLAB IS TOTAL 2" WIDER/LONGER THAN THE BASE)



CODE INFORMATION

CODE VERSION	FBC 2023 8th Edition, ASCE-7-22
MANUFACTURER	CARPORTS ANYWHERE
BUILDING TYPE	UTILITY STRUCTURE
CONSTRUCTION TYPE	II-B
RISK CATEGORY	I
FIRE PROTECTION	NONE
FIRE SUPPRESSION SYSTEM	NONE
OCCUPANCY	UTILITY, U
WIND SPEED	Vult-112mph
EXPOSURE	C
ENCLOSURE	ENCLOSED
INTERNAL PRESSURE COEFF.	+/- 0.18
IMPORTANCE FACTOR	1.0
ROOF DEAD LOAD	10PSF
ROOF LIVE LOAD	20PSF OR 300lb P.L.
FLOOR DEAD LOAD	10PSF
FLOOR LIVE LOAD	50PSF
"R" RATING OF WALLS, FLOOR, ROOF	N/A
MODULES PER BUILDING	1
HURRICANE PROTECTION USAGE	NO
HURRICANE SHELTER USAGE	NO
SQUARE FOOTAGE	2,000 SQ. FT.

REVISIONS

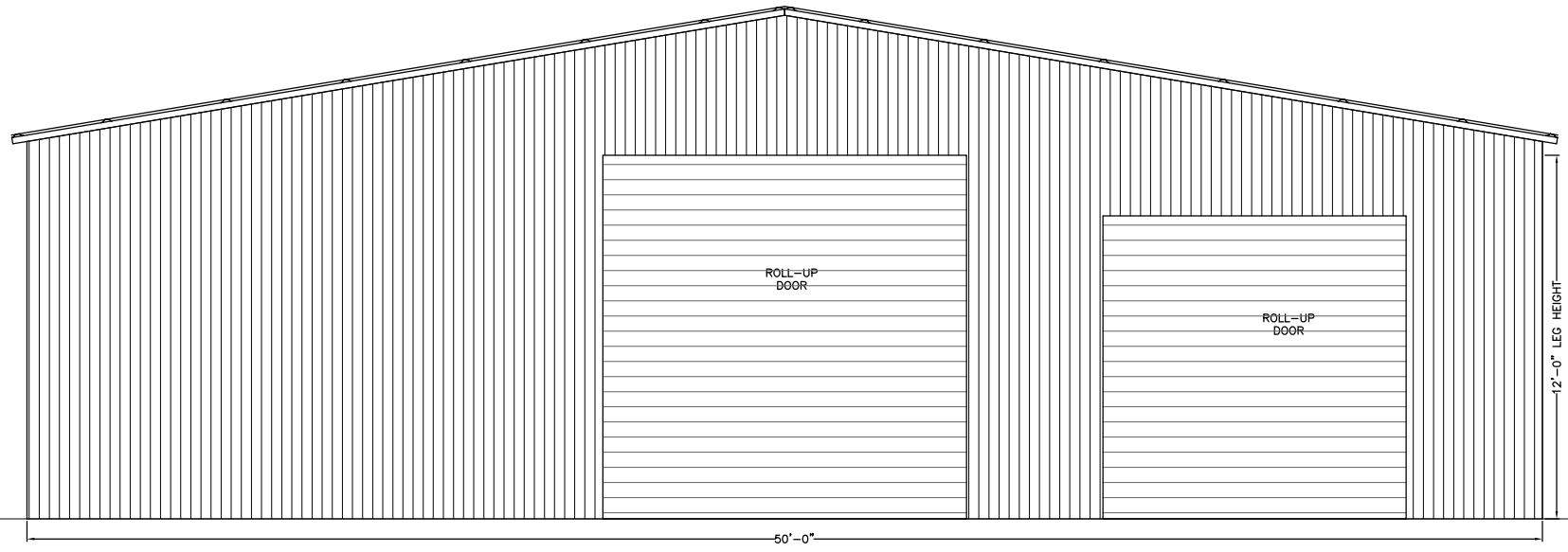
REV	DESCRIPTION	DATE	BY
1	FOOTER SIZE	1/30/25	MTB

DRAWN BY: MTB
 DATE: 11/19/24
 LOCATION: 245 SW Magnolia Ln, Fort White
 SIZE: 40'L X 50'W X 12'H

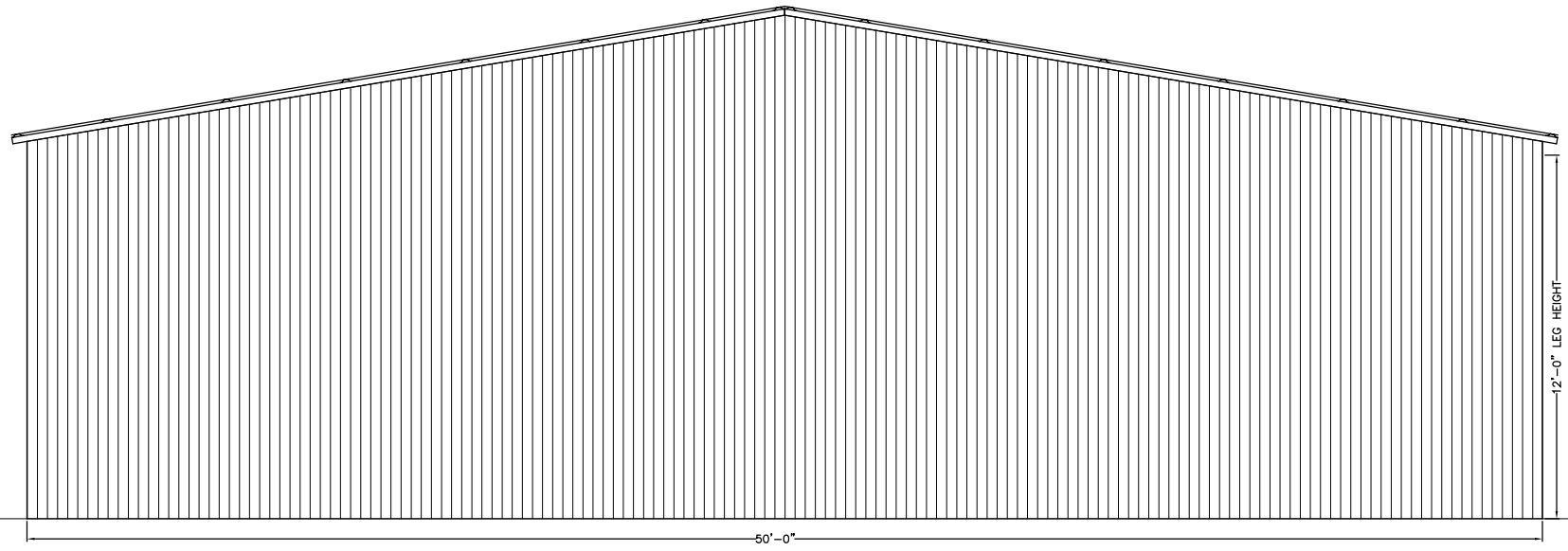
TITLE: SIDE & END FRAMING VIEWS

2/1/25

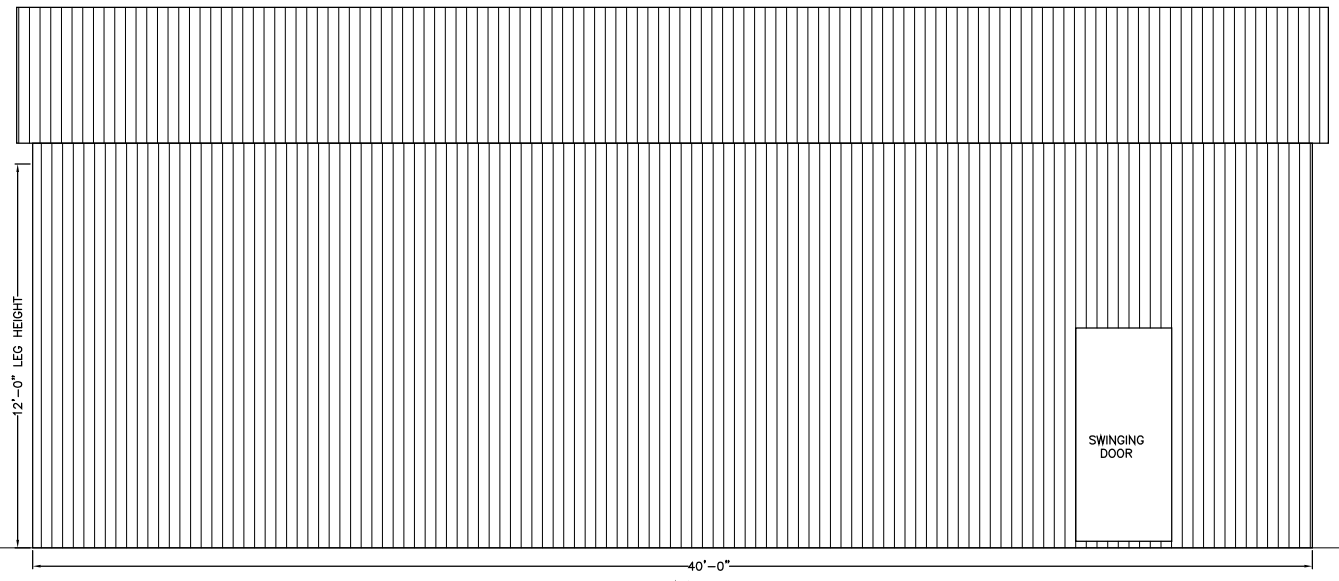
Matthew T. Baldwin P.E.
 Florida License #64608



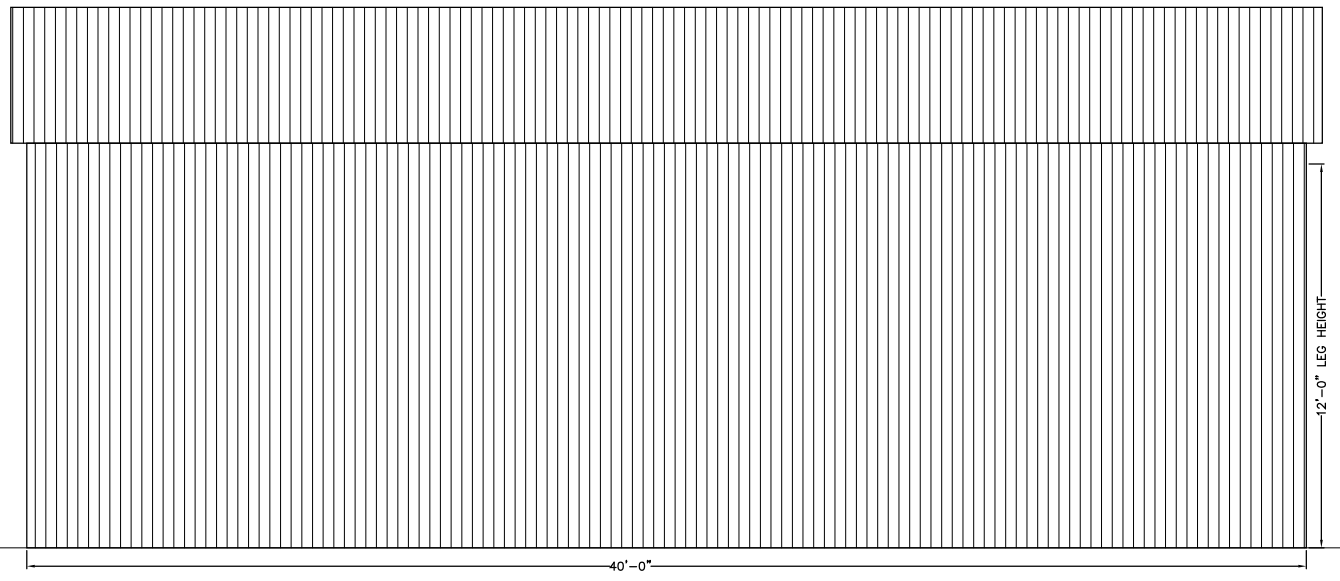
FRONT END WALL



REAR END WALL



LEFT SIDE WALL



RIGHT SIDE WALL

CODE INFORMATION	
CODE VERSION	FBC 2023 8th Edition, ASCE-7-22
MANUFACTURER	CARPORTS ANYWHERE
BUILDING TYPE	UTILITY STRUCTURE
CONSTRUCTION TYPE	II-B
RISK CATEGORY	I
FIRE PROTECTION	NONE
FIRE SUPPRESSION SYSTEM	NONE
OCCUPANCY	UTILITY, U
WIND SPEED	Vult-112mph
EXPOSURE	C
ENCLOSURE	ENCLOSED
INTERNAL PRESSURE COEFF.	+/- 0.18
IMPORTANCE FACTOR	1.0
ROOF DEAD LOAD	10PSF
ROOF LIVE LOAD	20PSF OR 300lb P.L.
FLOOR DEAD LOAD	10PSF
FLOOR LIVE LOAD	50PSF
"R" RATING OF WALLS, FLOOR, ROOF	N/A
MODULES PER BUILDING	1
HURRICANE PROTECTION USAGE	NO
HURRICANE SHELTER USAGE	NO
SQUARE FOOTAGE	2,000 SQ. FT.

REVISIONS			
REV	DESCRIPTION	DATE	BY
1	FOOTER SIZE	1/30/25	MTB

DRAWN BY: MTB
 DATE: 11/19/24
 LOCATION: 245 SW Magnolia Ln, Fort White
 SIZE: 40'L X 50'W X 12'H

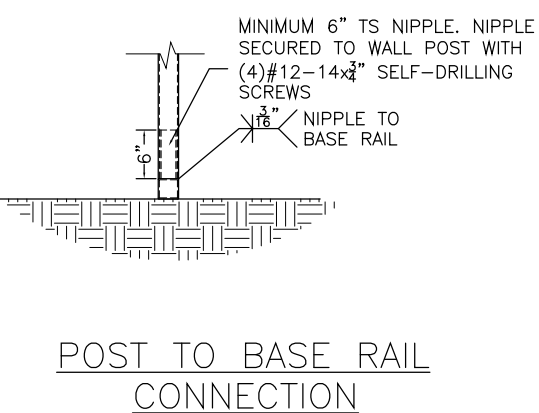
TITLE: SIDE & END VIEWS

2/1/25

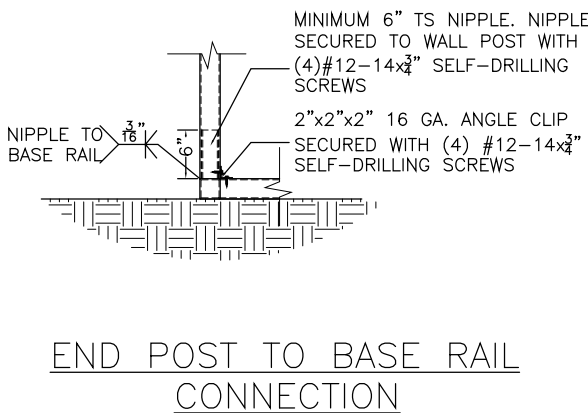
Matthew T. Baldwin P.E.
 Florida License #64608

Sheet: 3 OF 4

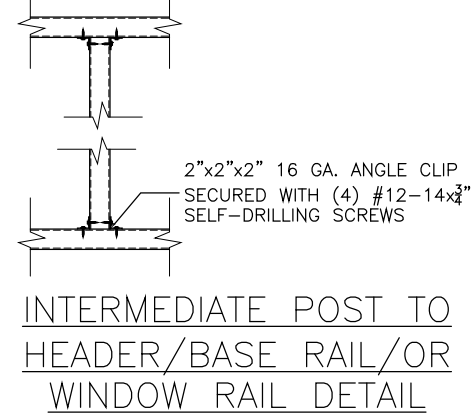
CODE INFORMATION			
CODE VERSION	FBC 2023 8th Edition, ASCE-7-22		
MANUFACTURER	CARPORTS ANYWHERE		
BUILDING TYPE	UTILITY STRUCTURE		
CONSTRUCTION TYPE	II-B		
RISK CATEGORY	I		
FIRE PROTECTION	NONE		
FIRE SUPPRESSION SYSTEM	NONE		
OCCUPANCY	UTILITY, U		
WIND SPEED	Vult-112mph		
EXPOSURE	C		
ENCLOSURE	ENCLOSED		
INTERNAL PRESSURE COEFF.	+/- 0.18		
IMPORTANCE FACTOR	1.0		
ROOF DEAD LOAD	10PSF		
ROOF LIVE LOAD	20PSF OR 300lb P.L.		
FLOOR DEAD LOAD	10PSF		
FLOOR LIVE LOAD	50PSF		
"R" RATING OF WALLS, FLOOR, ROOF	N/A		
MODULES PER BUILDING	1		
HURRICANE PROTECTION USAGE	NO		
HURRICANE SHELTER USAGE	NO		
SQUARE FOOTAGE	2,000 SQ. FT.		
REVISIONS			
REV	DESCRIPTION	DATE	BY
1	FOOTER SIZE	1/30/25	MTB



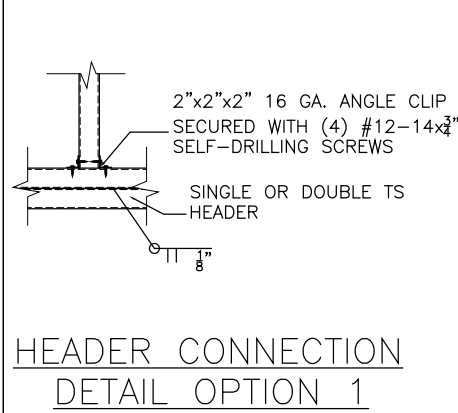
POST TO BASE RAIL CONNECTION



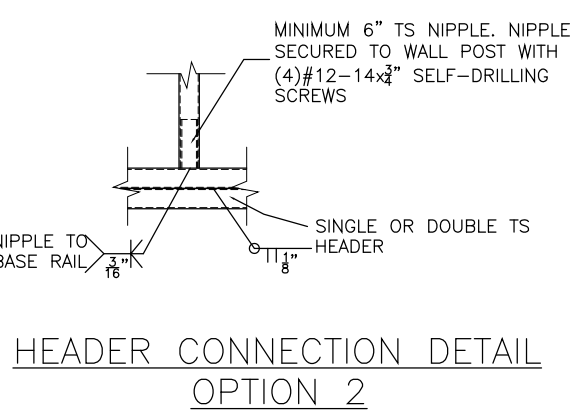
END POST TO BASE RAIL CONNECTION



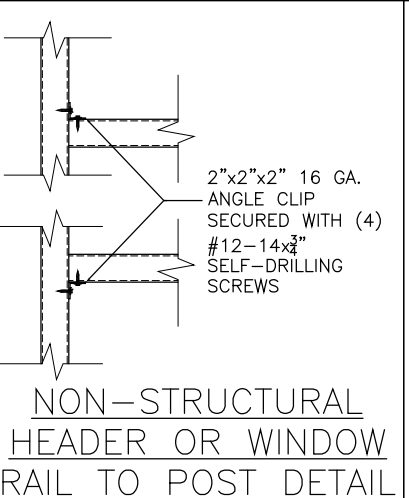
INTERMEDIATE POST TO HEADER/BASE RAIL/OR WINDOW RAIL DETAIL



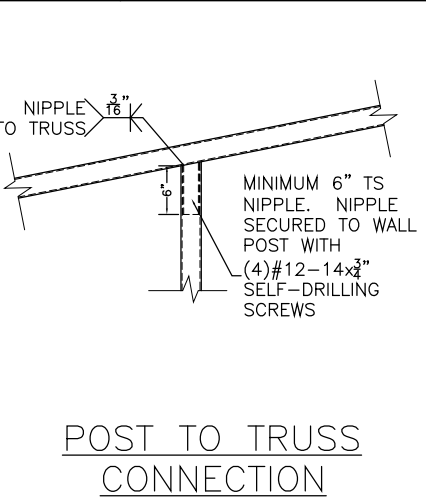
HEADER CONNECTION DETAIL OPTION 1



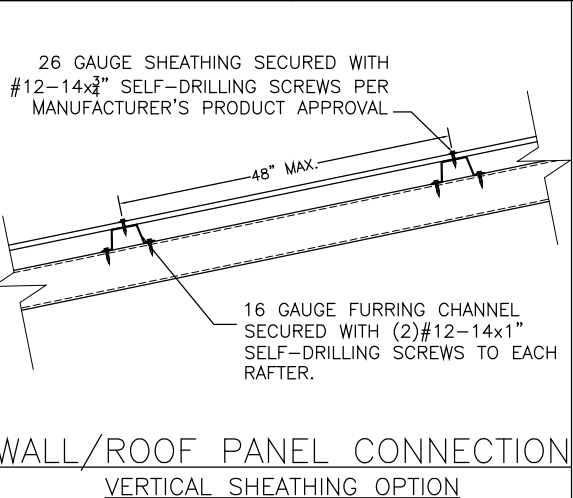
HEADER CONNECTION DETAIL OPTION 2



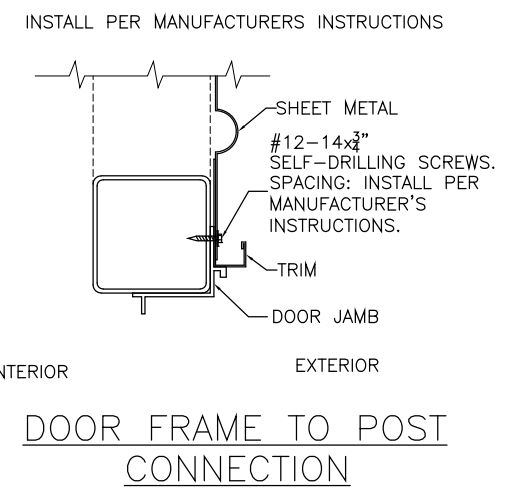
NON-STRUCTURAL HEADER OR WINDOW RAIL TO POST DETAIL



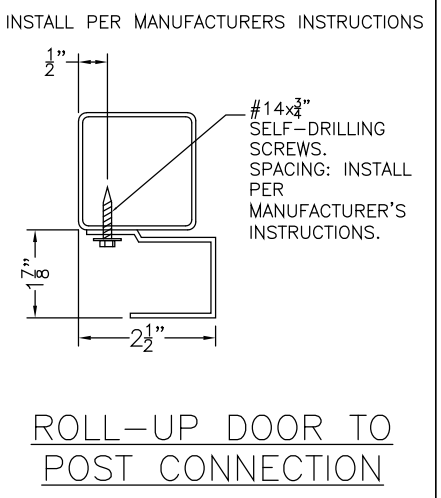
POST TO TRUSS CONNECTION



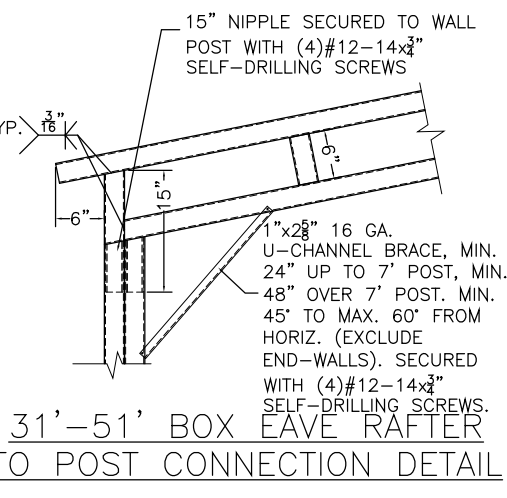
WALL/ROOF PANEL CONNECTION VERTICAL SHEATHING OPTION



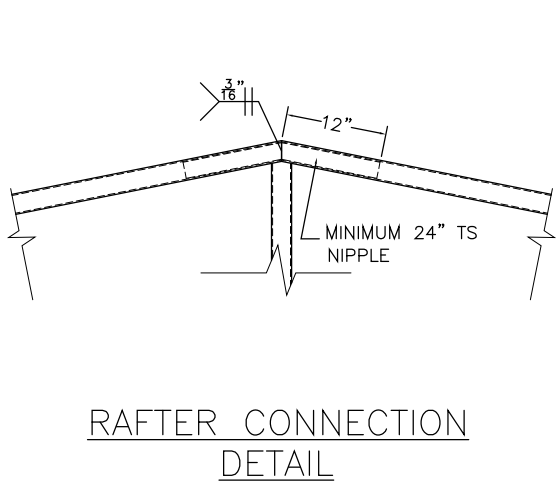
DOOR FRAME TO POST CONNECTION



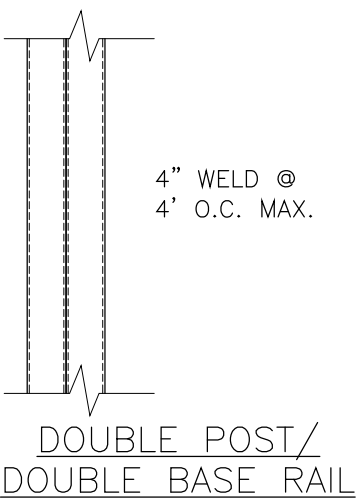
ROLL-UP DOOR TO POST CONNECTION



31'-51' BOX EAVE RAFTER TO POST CONNECTION DETAIL



RAFTER CONNECTION DETAIL



DOUBLE POST/DOUBLE BASE RAIL

Enclosed Design Pressures					112 mph
Zone 'a' dim.= 4ft					V _{ult} Wind Speed
Roof			Wall		
1	2	3	4	5	
10.3	14.0	14.0	13.5	15.4	
-12.5	-50.6	-59.7	-15.1	-18.8	

	APPROVED PRODUCTS	APPROVAL NO.
ROOF SHEATHING	CARPORTS ANYWHERE HAMPTON RIB ROOF PANEL	FL27402.1
WALL SHEATHING	CARPORTS ANYWHERE HAMPTON RIB WALL PANEL	FL27403.1
SWINGING DOOR	ELIXER DOOR AND METAL COMPANY 407 STEEL DOOR	FL17996.5
ROLL-UP DOOR	JANUS INTERNATIONAL CORPORATION SERIES 3100	FL21450.3

TITLE: DETAILS

DRAWN BY: MTB
 DATE: 11/19/24
 LOCATION: 245 SW Magnolia Ln, Fort White
 SIZE: 40'L X 50'W X 12'H

2/1/25

Matthew T. Baldwin P.E.
 Florida License #64608

Sheet: 4 OF 4