

REVISIONS
Apr 28, 2014
SOFTPLAN

EXTERIOR ELEVATIONS
SCALE: 1/4" = 1'-0"
DETAILS
SCALE: AS NOTED

MODEL 1302 (left-hand)
LOT 1, FOX POINT, LAKE CITY, FLORIDA
INNOVATIVE HOME BUILDERS
OF NORTH FLORIDA, INC.

WILLIAM MYERS
DESIGN INC.
125 NW OSWALD BLVD, SUITE 101
LAKE CITY, FL 32055
(386) 758-5406
www.williammyers.com



JOB NUMBER
20140424

SHEET NUMBER

A.1
OF 2 SHEETS



W.M.

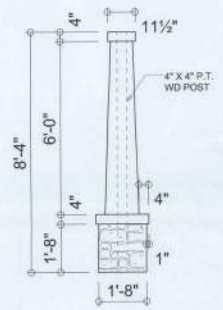
3174



ALTERNATE ELEVATION 'B'
SCALE: 1/4" = 1'-0"



FRONT ELEVATION
SCALE: 1/4" = 1'-0"



CRAFTSMAN COLUMN DETAIL
SCALE: 1/2" = 1'-0"



RIGHT ELEVATION
SCALE: 1/4" = 1'-0"

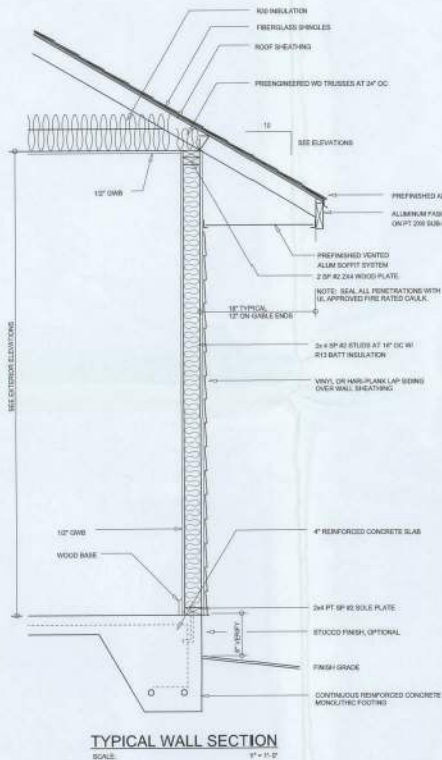


REAR ELEVATION
SCALE: 1/4" = 1'-0"

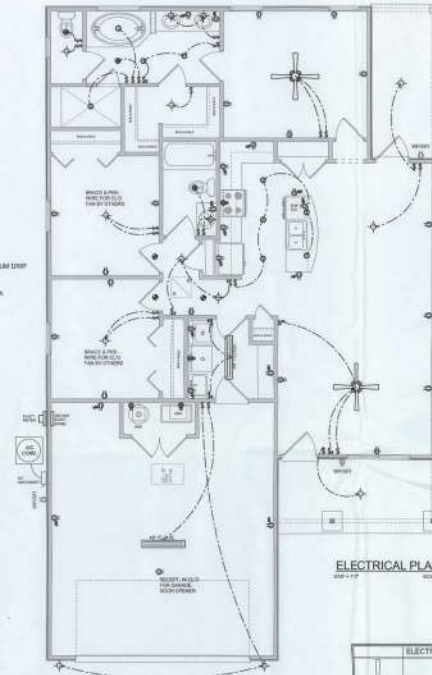


LEFT ELEVATION
SCALE: 1/4" = 1'-0"

NOTE: ALL DRAWINGS NOT TO BE SCALED, WRITTEN DIMENSIONS TAKE PRECEDENCE OVER SCALED DIMENSIONS



TYPICAL WALL SECTION
SCALE: 1/4" = 1'-0"



ELECTRICAL PLAN
SCALE: 1/8" = 1'-0"

ELECTRICAL LEGEND	
(Symbol)	CEILING FAN (PRE-INSTALLED LIGHT KIT)
(Symbol)	DOUBLE SECURITY LIGHT
(Symbol)	PROTECTED CABLE JUNCTION
(Symbol)	BATH EXHAUST FAN
(Symbol)	LIGHT FIXTURE
(Symbol)	OUTLET (OUTLET AND/OR TRIMMER RESISTANT)
(Symbol)	120V OUTLET
(Symbol)	20 AMP DISCONNECT (20 AMP BREAKER)
(Symbol)	TELEPHONE JACK
(Symbol)	TELEPHONE JACK
(Symbol)	SMOKE/CO/HEAT/IMPACT DETECTOR (W/ BATTERY)
(Symbol)	WALL SWITCH
(Symbol)	3 WAY WALL SWITCH
(Symbol)	WATERPROOF GFI OUTLET
(Symbol)	1 OR 2 W/ FLUORESCENT FIXTURE

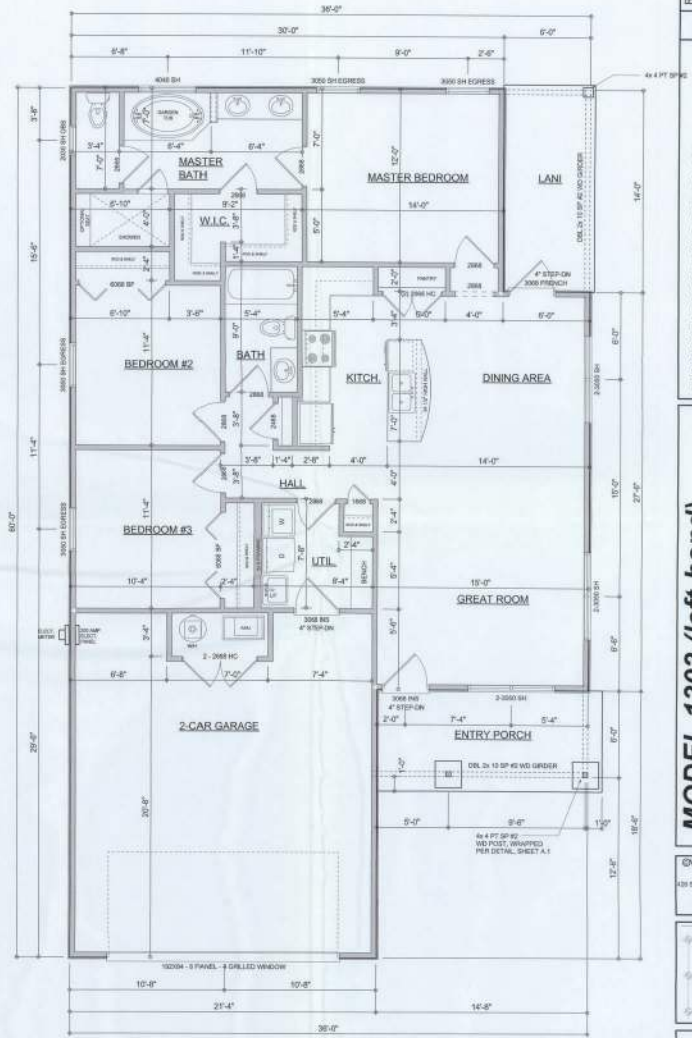
AREA SUMMARY

LIVING AREA	1,302 S.F.
ENTRY PORCH AREA	88 S.F.
COVERED PORCH AREA	84 S.F.
GARAGE AREA	503 S.F.
TOTAL AREA	1,977 S.F.

Usage: The separation shall comply with the following:

- The private garage shall be separated from the dwelling unit and its site area by means of a minimum 1/2-inch (1/2") fire-rated board applied to the garage side. Garage ceilings, fire-rated doors and fire-rated windows shall be separated from all habitable rooms above by not less than 2x4-inch Type X gypsum board or equivalent. Door openings between the private garage and the dwelling unit shall be equipped with automatic smoke doors or doors or door-closers that shall close on each side. (See Section 0411.10 for details.) Doors in compliance with Section 710.3.3.1. Clearings from a private garage directly into a room used for sleeping purposes shall not be permitted.
- Doors in a private garage shall be protected by the walls or ceiling separating the dwelling unit from the garage shall be constructed of a minimum 0.015-inch (5/8") steel sheet piling and shall have no openings to the garage.
- A separation is not required between a Shop R-3 and U-2 except provided the separation is safely open on two or more sides and there is not enclosed above areas.

NOTE: ALL DRAWINGS NOT TO BE SCALED. WRITTEN DIMENSIONS TAKE PRECEDENCE OVER SCALED DIMENSIONS



FLOOR PLAN
SCALE: 1/4" = 1'-0"

GENERAL NOTES:
ALL CEILING HEIGHTS SHALL BE 9'-0" UNLESS OTHERWISE NOTED.
ALL WINDOW HEAD HEIGHTS SHALL BE 8'-0" AFF.

REVISIONS
April 25, 2014

SOFTPLAN
SOFTWARE FOR ARCHITECTS

DIMENSIONED FLOOR PLAN
SCALE: 1/8" = 1'-0"

ELECTRICAL PLAN
SCALE: 1/8" = 1'-0"

MODEL 1302 (left-hand)
LOT 3, Lake Park at Parkside - LAKE CITY, FLORIDA

INNOVATIVE HOME BUILDERS
OF NORTH FLORIDA, INC.

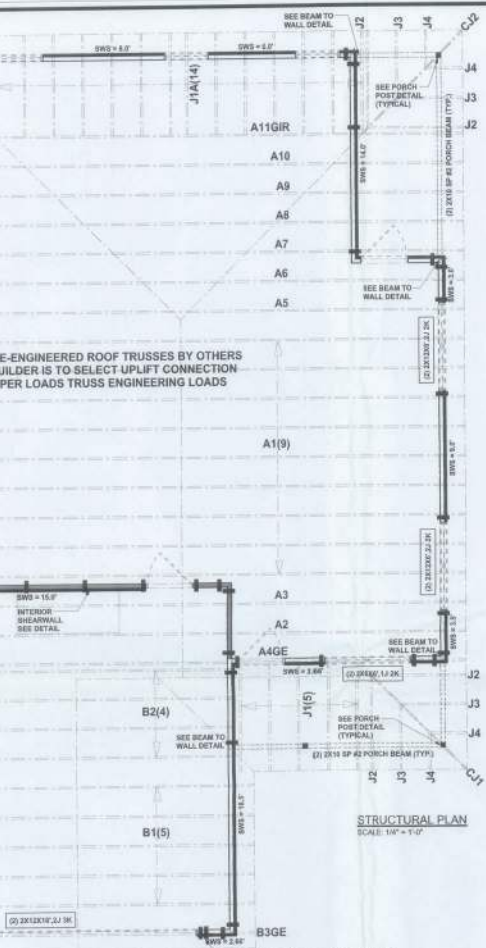
WILLIAM MYERS DESIGN INC.
430 SW COMMERCIAL BL. STE 100
LAKE CITY, FL 32808
(386) 758-8400
www.williammyersdesign.com



JOB NUMBER
20140424

SHEET NUMBER
A.2
OF 2 SHEETS

William Myers



STRUCTURAL PLAN NOTES

- SN-1 ALL LOAD BEARING FRAME WALL & PORCH HEADERS SHALL BE A MINIMUM OF (2) 20# SP #2 (UNCL.)
- SN-2 ALL LOAD BEARING FRAME WALL HEADERS SHALL HAVE (1) JACK STUD & (1) KING STUD EACH SIDE (I.F.D.)
- SN-3 DIMENSIONS ON STRUCTURAL SHEETS ARE NOT EXACT. REFER TO ARCHITECTURAL FLOOR PLAN FOR ACTUAL DIMENSIONS
- SN-4 PERMANENT TRUSS BRACING IS TO BE INSTALLED AT LOCATIONS AS SHOWN ON THE SEALED DRAWINGS. LATERAL BRACING IS TO BE RESTRAINED PER BCSP-03 BC301-A, BC301-B, BC301-C & BC301-D. BC301-E, BC301-F & BC301-G ARE FURNISHED BY THE TRUSS SUPPLIER WITH THE SEALED TRUSS PACKAGE

WALL LEGEND

	EXTERIOR WALL
	INTERIOR NONLOAD BEARING WALL
	INTERIOR LOAD BEARING WALL w/ NO UPLIFT
	INTERIOR LOAD BEARING WALL w/ UPLIFT

HEADER LEGEND

	HEADER/BEAM CALL-OUT (J/L/O)
	HEADER OF KING STUDS (FULL LENGTH)
	HEADER OF JACK STUDS (UNDER HEADER)
	SPAN OF HEADER
	SIZE OF HEADER MATERIAL
	NUMBER OF PLYS IN HEADER

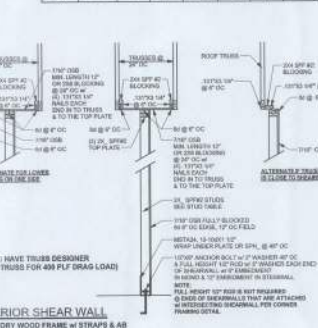
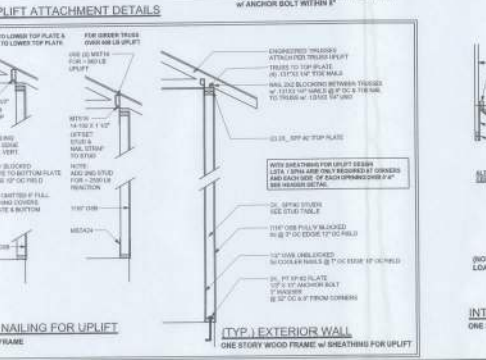
TOTAL SHEAR WALL SEGMENTS
INDICATES SHEAR WALL SEGMENTS

	REQUIRED	ACTUAL
TRANSVERSE	38-F	41-F
LONGITUDINAL	22-F	98-F

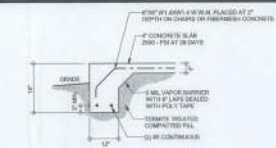
TALL STEM WALL TABLE

The table specifies 10' tall anchorage bars with 4" bars in the footing and 10" bars in the foundation slab at the top. The vertical steel is to be placed based on the bottom side of the slab and spans from the reinforcement centerline of the adjacent slab on each side. The steel shall have 180° hooks at all ends. For higher winds the wall (1" LWD) may be used with reinforcement as shown in the table below.

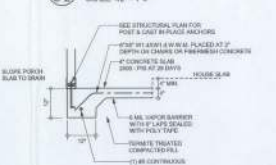
STEM WALL HEIGHT (FEET)	BAPTIST HEIGHT (FEET)	VERTICAL REINFORCEMENT FOR 1" OVER FOOTING (INCHES)				VERTICAL REINFORCEMENT FOR 1" OVER FOUNDATION (INCHES)			
		#6	#7	#8	#5	#7	#8	#9	#6
3.3	3.0	90	90	90	90	90	90	90	90
4.5	3.7	90	90	90	90	90	90	90	90
4.7	4.3	90	90	90	90	90	90	90	90
5.3	4.9	90	90	90	90	90	90	90	90
6.0	5.7	40	80	90	90	90	90	90	90
6.7	6.3	32	90	80	90	90	90	90	90
7.3	7.0	24	40	50	40	80	90	90	90
8.0	7.7	18	32	40	32	64	80	90	90
8.7	8.3	8	24	32	24	48	64	80	90
9.3	8.9	8	18	24	18	40	48	64	80



INTERIOR SHEAR WALL
ONE STORY WOOD FRAME w/ STRAPS & AB



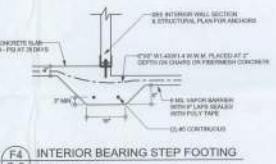
F1 MONOLITHIC FOOTING
SCALE: 1/2" = 1'-0"



F2 PORCH FOOTING
SCALE: 1/2" = 1'-0"



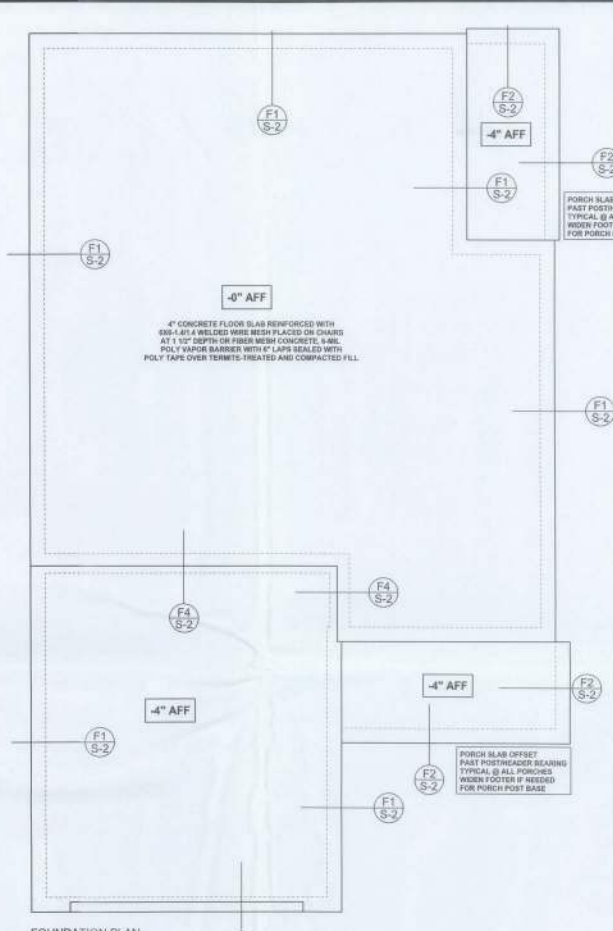
F1 INTERIOR BEARING FOOTING
SCALE: 1/2" = 1'-0"



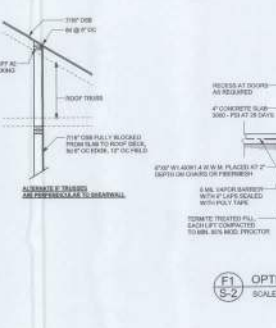
F4 INTERIOR BEARING STEP FOOTING
SCALE: 1/2" = 1'-0"



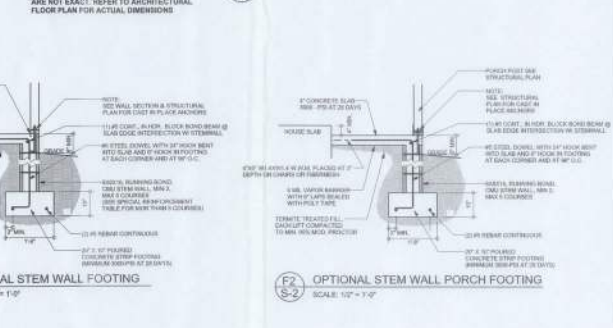
F5 GARAGE DOOR FOOTING
SCALE: 1/2" = 1'-0"



FOUNDATION PLAN
SCALE: 1/2" = 1'-0"
DIMENSIONS ON STRUCTURAL SHEETS ARE NOT EXACT. REFER TO ARCHITECTURAL FLOOR PLAN FOR ACTUAL DIMENSIONS



F1 OPTIONAL STEM WALL FOOTING
SCALE: 1/2" = 1'-0"



F2 OPTIONAL STEM WALL PORCH FOOTING
SCALE: 1/2" = 1'-0"

REVISIONS



ARCHITECT: Mark Dineen, P.E.
163 SW Midtown Place, Suite 103
Lake City, Florida 32025
Phone: (386) 754-5419
Fax: (386) 269-4871

DESIGNER:
Mark Dineen, P.E.
163 SW Midtown Place, Suite 103
Lake City, Florida 32025
Phone: (386) 754-5419
Fax: (386) 269-4871



Innovative Home Builders

1302 (Left) Lot 3

ADDRESS:
Lot 3, Box A, In-56
Custodian County, FL

Mark Dineen, P.E.
163 SW Midtown Place
Suite 103
Lake City, Florida 32025
Phone: (386) 754-5419
Fax: (386) 269-4871

PRINTED DATE:
May 2, 2014

DRAWN BY: STRUCTURAL BY:
DATE: 1/8/14
JOB NUMBER: 140334

DRAWING NUMBER: S-2 OF 2 SHEETS