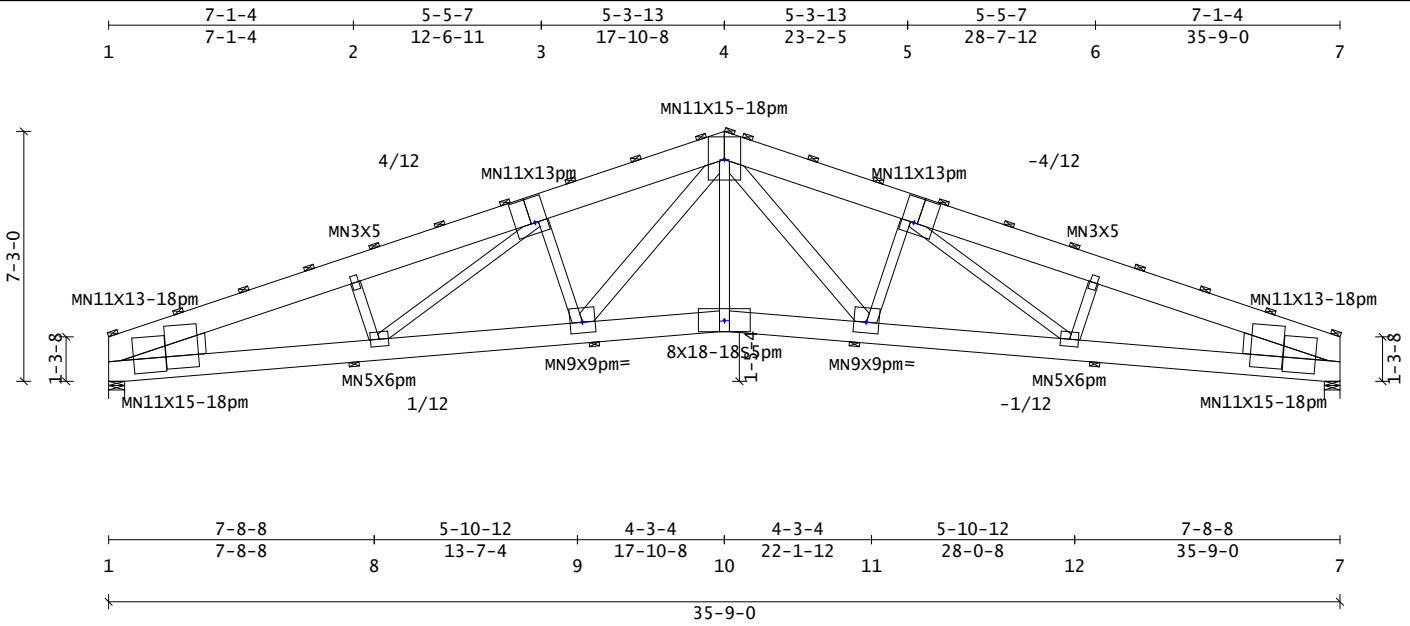


Customer: 131151081

SID:
TID:
Date: 07 / 03 / 24
Page: 1 of 1

Truss Mfr. MBI



Truss Weight = 326.0 lb

Design: TPI-2014
 PSF Live Dead Dur Factors
 TC 43.0 3.0 Live Wind Snow
 BC 0.0 1.0 Lum 1.15 N/A N/A
 Total 47.0 Plt 1.15 N/A N/A
 Spacing: 8-00-00 o.c. Plies: 1
 Repetitive Member Increase: No
 Green Lumber: No Wet Service: No
 Fab Tolerance: 10% Creep (Kcr) = 2.0

Material Summary

TC	2x10	SP	2400/2.0	
BC	2x8	SP	2400/2.0	
Webs	2x4	SP (ALSC6-2013)	#1	
	2x6	SP (ALSC6-2013)	#1	4-11
9-4				
Wedge	2x8	SP (ALSC6-2013)	#1	

Member Forces Summary

Max CSI in TC PANEL	2	3	0.81
Max CSI in BC PANEL	1	8	0.97
Max CSI in Web	3	9	0.42

...Mem...	Ten	Comp	.CSI.	
TC	1-2	0	15525	0.73
	2-3	0	15019	0.81
	3-4	0	14396	0.58
	4-5	0	14396	0.58
	5-6	0	15017	0.81
	6-7	0	15524	0.72
BC	1-8	14232	0	0.97
	7-12	14231	0	0.97
	8-9	14285	0	0.97
	9-10	11552	0	0.57
	10-11	11552	0	0.57
	11-12	14285	0	0.97
Web	2-8	0	430	0.05
	3-8	4	191	0.10
	3-9	0	2173	0.42
	4-9	2959	0	0.35
	4-10	2131	0	0.35
	4-11	2959	0	0.35
	5-11	0	2173	0.42
	5-12	4	193	0.11
	6-12	0	428	0.05
MSC	10-10	0	0	0.00

Reaction Summary

Jnt	--X--	Loc	React
1	02-12	6720	
7	35-06-04	6720	

Notes

Plates designed for Cq at 0.90 and Rotational Tolerance of 5.0 degrees
 A "pm" next to the plate size indicates that the plate has been user modified; see Plate Offsets for any special positioning requirements.
 Single pass roller reduction factor has been used.

Deflection Summary

TrussSpan	Limit	Actual (in)	Location
Vert LL	L/240	L/411 (-1.03)	10-11
Vert DL	L/120	L/999 (-0.10)	10-11
Vert CR	L/180	L/376 (-1.12)	10-11
Horz LL	1.00in	(0.48)	@Jt 7
Horz CR	1.50in	(0.52)	@Jt 7
DPL LL	2L/120	2L/999 (0.00)	10- 4

Bracing Data Summary

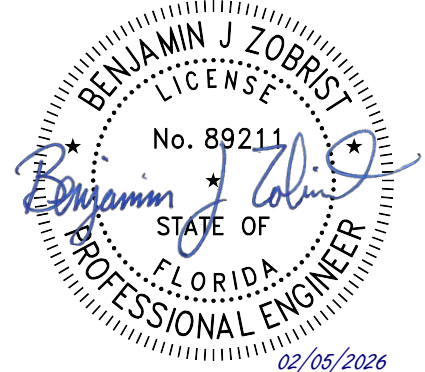
-----Bracing Data-----			
Chords; continuous except where shown			
-----Purlins-----			
	--oc--	--From--	--To-- #Bays
TC	2-00-00	0	35-09-00 19
BC	8-00-00	0	35-09-00 6
Web Bracing	-- None		

Plate offsets (X, Y):

(None unless indicated below)
 Jnt3(-02-00,02-00), Jnt4(0,00-06),
 Jnt5(02-00,02-00), Jnt9(-00-01,00-10),
 Jnt10(0,00-03), Jnt11(00-01,00-10)

Joint Stress Index (JSI):

Jnt1(0.86), Jnt1(0.97), Jnt2(0.60),
 Jnt3(0.81), Jnt4(0.68), Jnt5(0.81),
 Jnt6(0.60), Jnt7(0.86), Jnt7(0.97),
 Jnt8(0.61), Jnt9(0.68), Jnt10(0.85),
 Jnt11(0.68), Jnt12(0.61)



CERTIFICATE MUST BE VERIFIED ON ELECTRONIC COPIES. PRINTED COPIES OF THIS DOCUMENT ARE NOT CONSIDERED SIGNED AND SEALED.



Component Solutions
 Truss Studio V
 2022.5.2.5