



Manual S Compliance Report

Entire House

E-Calcs Plus, Inc

Job: SFH - 217 SW Blue Jay Ct
 Date: Mar 24, 2026
 By: E-Calcs Plus, Inc

Serving all of Florida Phone: 833.322.5271 Email: eric@ecalcsplus.com Web: www.ecalcsplus.com License: HERS Rater ID# 0757810

Project Information

For: SFH - 217 SW Blue Jay Ct
 217 SW Blue Jay Ct, Fort White, FL 32038

Cooling Equipment

Design Conditions

Outdoor design DB:	91.9°F	Sensible gain:	21052	Btuh	Entering coil DB:	77.2°F
Outdoor design WB:	76.2°F	Latent gain:	3505	Btuh	Entering coil WB:	63.6°F
Indoor design DB:	75.0°F	Total gain:	24556	Btuh		
Indoor RH:	50%	Estimated airflow:	947	cfm		

Manufacturer's Performance Data at Actual Design Conditions

Equipment type:	Split ASHP			
Manufacturer:	Heil	Model:	N5H5S30*K*AAA*+F5MA5*30L*B*	
Actual airflow:	947	cfm		
Sensible capacity:	23336	Btuh	111%	of load
Latent capacity:	4097	Btuh	117%	of load
Total capacity:	27433	Btuh	112%	of load SHR: 85%

Heating Equipment

Design Conditions

Outdoor design DB:	33.0°F	Heat loss:	24690	Btuh	Entering coil DB:	68.6°F
Indoor design DB:	70.0°F					

Manufacturer's Performance Data at Actual Design Conditions

Equipment type:	Split ASHP			
Manufacturer:	Heil	Model:	N5H5S30*K*AAA*+F5MA5*30L*B*	
Actual airflow:	947	cfm		
Output capacity:	23371	Btuh	95%	of load
Supplemental heat required:	1320	Btuh		
			Capacity balance:	30 °F
			Economic balance:	-44 °F

Backup equipment type:	Elec strip			
Manufacturer:	Heil	Model:	AFUE 100	
Actual airflow:	947	cfm		
Output capacity:	5.0	kW	69%	of load Temp. rise: 16 °F

Meets all requirements of ACCA Manual S.



Project Summary
Entire House
E-Calcs Plus, Inc

Job: SFH - 217 SW Blue Jay Ct
 Date: Mar 24, 2026
 By: E-Calcs Plus, Inc

Serving all of Florida Phone: 833.322.5271 Email: eric@ecalcsplus.com Web: www.ecalcsplus.com License: HERS Rater ID# 0757810

Project Information

For: SFH - 217 SW Blue Jay Ct
 217 SW Blue Jay Ct, Fort White, FL 32038

Notes:

Design Information

Weather: Gainesville Rgnl, FL, US

Winter Design Conditions

Outside db 33 °F
 Inside db 70 °F
 Design TD 37 °F

Ventilation Method ASHRAE 62.2-2010

Summer Design Conditions

Outside db 92 °F
 Inside db 75 °F
 Design TD 17 °F
 Daily range M
 Relative humidity 50 %
 Moisture difference 47 gr/lb

Heating Summary

Structure 18759 Btuh
 Ducts (R-6.0) 5932 Btuh
 Central vent (0 cfm) 0 Btuh
 Humidification 0 Btuh
 Piping 0 Btuh
 Equipment load 24690 Btuh

Infiltration

Method Simplified
 Construction quality Semi-tight
 Fireplaces 0

	Heating	Cooling
Area (ft ²)	1632	1632
Volume (ft ³)	14688	14688
Air changes/hour	0.26	0.14
Equiv. AVF (cfm)	64	34

Heating Equipment Summary

Make Heil
 Trade PERFORMANCE 16 SEER2 HP
 Model N5H5S30*K*AAA*
 AHRI ref 216463843
 Efficiency 7.5 HSPF2
 Heating input
 Heating output 28600 Btuh @ 47°F
 Temperature rise 28 °F
 Actual air flow 947 cfm
 Air flow factor 0.038 cfm/Btuh
 Static pressure 0.50 in H2O
 Space thermostat
 Capacity balance point = 30 °F
 Backup: Heil AFUE 100
 Input = 5 kW, Output = 17061 Btuh, 100 AFUE

Sensible Cooling Equipment Load Sizing

Structure 14469 Btuh
 Ducts (R-6.0) 6582 Btuh
 Central vent (0 cfm) 0 Btuh
 Blower 0 Btuh
 Use manufacturer's data y
 Rate/swing multiplier 1.00
 Equipment sensible load 21052 Btuh

Latent Cooling Equipment Load Sizing

Structure 1887 Btuh
 Ducts 1618 Btuh
 Central vent (0 cfm) 0 Btuh
 Equipment latent load 3505 Btuh
Equipment Total Load (Sen+Lat) 24556 Btuh
 Req. total capacity at 0.75 SHR 2.3 ton

Cooling Equipment Summary

Make Heil
 Trade PERFORMANCE 16 SEER2 HP
 Cond N5H5S30*K*AAA*
 Coil F5MA5*30L*B*
 AHRI ref 216463843
 Efficiency 12.0 EER2, 14.5 SEER2
 Sensible cooling 21300 Btuh
 Latent cooling 7100 Btuh
 Total cooling 28400 Btuh
 Actual air flow 947 cfm
 Air flow factor 0.045 cfm/Btuh
 Static pressure 0.50 in H2O
 Load sensible heat ratio 0.86

Calculations approved by ACCA to meet all requirements of Manual J 8th Ed.





Load Short Form

Entire House

E-Calcs Plus, Inc

Job: SFH - 217 SW Blue Jay Ct
 Date: Mar 24, 2026
 By: E-Calcs Plus, Inc

Serving all of Florida Phone: 833.322.5271 Email: eric@ecalcsplus.com Web: www.ecalcsplus.com License: HERS Rater ID# 0757810

Project Information

For: SFH - 217 SW Blue Jay Ct
 217 SW Blue Jay Ct, Fort White, FL 32038

Design Information

	Htg	Clg	Method	Infiltration
Outside db (°F)	33	92		Simplified
Inside db (°F)	70	75	Construction quality	Semi-tight
Design TD (°F)	37	17	Fireplaces	0
Daily range	-	M		
Inside humidity (%)	50	50		
Moisture difference (gr/lb)	33	47		

HEATING EQUIPMENT

Make Heil
 Trade PERFORMANCE 16 SEER2 HP
 Model N5H5S30*K*AAA*
 AHRI ref 216463843

Efficiency 7.5 HSPF2
 Heating input
 Heating output 28600 Btuh @ 47°F
 Temperature rise 28 °F
 Actual air flow 947 cfm
 Air flow factor 0.038 cfm/Btuh
 Static pressure 0.50 in H2O
 Space thermostat
 Capacity balance point = 30 °F

Backup: Heil AFUE 100
 Input = 5 kW, Output = 17061 Btuh, 100 AFUE

COOLING EQUIPMENT

Make Heil
 Trade PERFORMANCE 16 SEER2 HP
 Model N5H5S30*K*AAA*
 Coil F5MA5*30L*B*
 AHRI ref 216463843

Efficiency 12.0 EER2, 14.5 SEER2
 Sensible cooling 21300 Btuh
 Latent cooling 7100 Btuh
 Total cooling 28400 Btuh
 Actual air flow 947 cfm
 Air flow factor 0.045 cfm/Btuh
 Static pressure 0.50 in H2O
 Load sensible heat ratio 0.86

ROOM NAME	Area (ft²)	Htg load (Btuh)	Clg load (Btuh)	Htg AVF (cfm)	Clg AVF (cfm)
MWIC	48	1612	436	62	20
MBR	234	2688	2811	103	126
MBA	72	2049	604	79	27
Laundry	98	1487	1160	57	52
Kit Liv Din	676	8528	10202	327	459
BR3	188	3539	2010	136	90
BA2	92	781	329	30	15
BR2	224	4005	3498	154	157

Calculations approved by ACCA to meet all requirements of Manual J 8th Ed.



Entire House	p	1632	24690	21052	947	947
Other equip loads			0	0		
Equip. @ 1.00 RSM				21052		
Latent cooling				3505		
TOTALS		1632	24690	24556	947	947

Calculations approved by ACCA to meet all requirements of Manual J 8th Ed.





Project Information

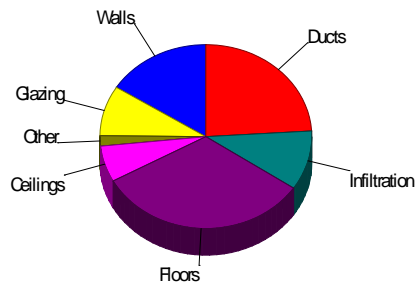
For: SFH - 217 SW Blue Jay Ct
217 SW Blue Jay Ct, Fort White, FL 32038

Design Conditions

Location: Gainesville Rgnl, FL, US Elevation: 164 ft Latitude: 30°N			Indoor: Indoor temperature (°F) 70 Design TD (°F) 37 Relative humidity (%) 50 Moisture difference (gr/lb) 32.8	Heating 70 37 50 32.8	Cooling 75 17 50 46.9
Outdoor: Drybulb (°F) 33 Daily range (°F) - Wet bulb (°F) - Wind speed (mph) 15.0	Heating 33 - - 15.0	Cooling 92 18 (M) 76 7.5	Infiltration: Method Construction quality Fireplaces	Simplified Semi-tight 0	

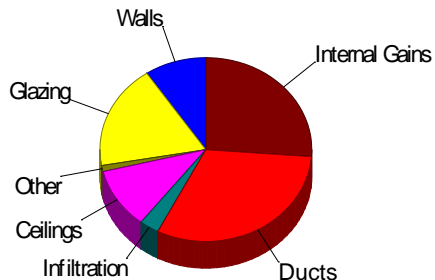
Heating

Component	Btuh/ft²	Btuh	% of load
Walls	2.7	3950	16.0
Glazing	12.1	2184	8.8
Doors	22.2	446	1.8
Ceilings	1.0	1570	6.4
Floors	4.9	8033	32.5
Infiltration	2.0	2575	10.4
Ducts		5932	24.0
Piping		0	0
Humidification		0	0
Ventilation		0	0
Adjustments		0	0
Total		24690	100.0



Cooling

Component	Btuh/ft²	Btuh	% of load
Walls	1.4	1982	9.4
Glazing	21.4	3866	18.4
Doors	11.2	225	1.1
Ceilings	1.4	2243	10.7
Floors	0	0	0
Infiltration	0.5	633	3.0
Ducts		6582	31.3
Ventilation		0	0
Internal gains		5520	26.2
Blower		0	0
Adjustments		0	0
Total		21052	100.0

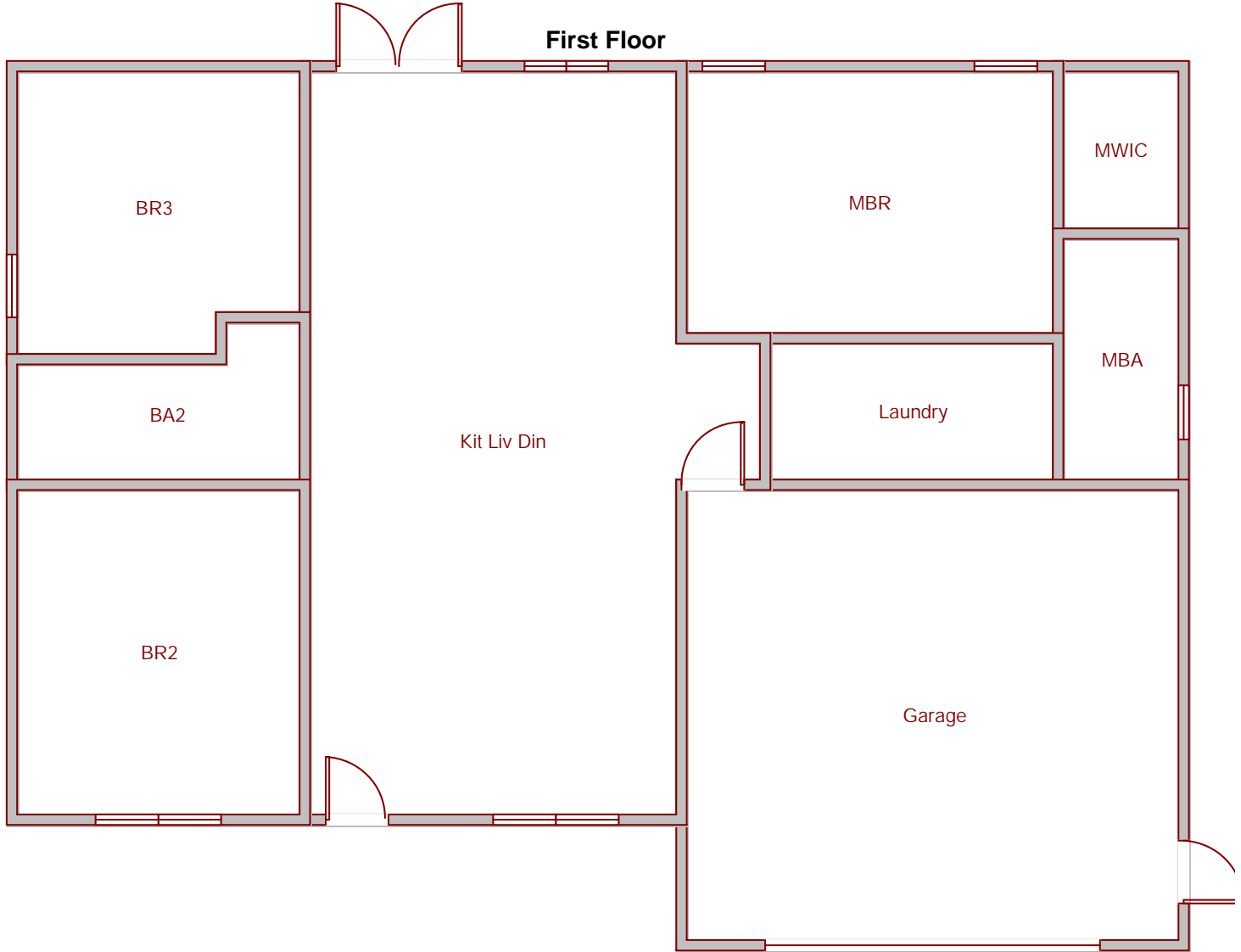


Latent Cooling Load = 3505 Btuh
 Overall U-value = 0.089 Btuh/ft²-°F, Window / Floor Area = 11.1 %

Data entries checked.



First Floor



Job #: SFH - 217 SW Blue Jay Ct
Performed by E-Calcs Plus, Inc for:

SFH - 217 SW Blue Jay Ct
217 SW Blue Jay Ct
Fort White, FL 32038

E-Calcs Plus, Inc

Serving all of Florida

Phone: 833.322.5271 License: HERS Rater ID# 0757810
www.ecalcsplus.com eric@ecalcsplus.com

Scale: 1 : 93

Page 1

Right-Suite@Universal 2025

25.0.03 RSU28253

2026-Mar-25 09:32:57

...217 SW Blue Jay Ct 3.25.2026.ru