

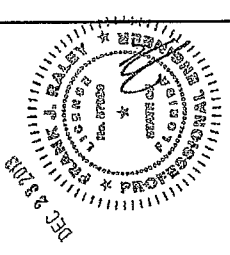
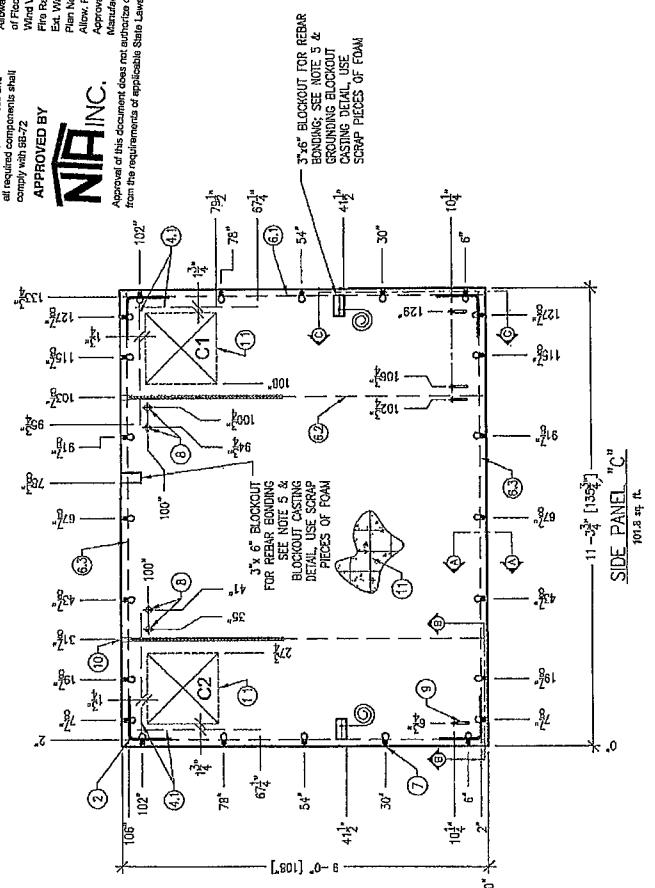
REBAR CUT LIST		FOAM CUT LIST		ITEM NO. PART NO. QTY		DESCRIPTION	DRG. NO.
ITEM	QTY	LENGTH	ITEM	QTY	LENGTH		
4.1	4	36"	1	1	1	EPS FOAM INSULATION SEE BUILDING COVERSHEET	-
6.1	2	106"	2	2	2	REBAR BEND #3 X 24" 90°	-
6.2	2	104"	3	4	4	REBAR #4 (1/2") GRADE 60 - Ø MID DEPTH	-
6.3	2	134"	4	1	1	REBAR #6 (3/4") GRADE 60	-
			5	1	1	INSERT 5/8"-11 (F42)	-
			6	1	1	INSERT 1/2" (F42)	-
			7	1	1	1/2" Ø PVC CHUTE STRAIGHT THROUGH, SEE BUILDING COVERSHEET	-
			8	1	1	1/2" Ø PVC CHUTE STRAIGHT THROUGH, SEE BUILDING COVERSHEET	-
			9	1	1	1/2" Ø PVC CHUTE STRAIGHT THROUGH, SEE BUILDING COVERSHEET	-
			10	1	1	1/2" Ø PVC CHUTE STRAIGHT THROUGH, SEE BUILDING COVERSHEET	-
			11	1	1	1/2" Ø PVC CHUTE STRAIGHT THROUGH, SEE BUILDING COVERSHEET	-

These prints comply with the Florida Manufactured Building Act and adopted Codes and Standards. Components shall comply with 1827-2.

APPROVED BY **NIA INC.**

Approval of this document does not authorize or approve any deviation or modification from the requirements of applicable State Law.

Constr. Type: VB
Occupancy: SB
Allowable No. of Floors: 1
Wind Velocity: 130 mph c.
Fire Rating of Panel Walls: 0
Allow Floor Load: MF177-D-5577
252 PSF
Approval Date: 11/26/2014
Manufacturer: NIA INC.
E-1005



1800 DAMENPORT DRIVE WINDEN, LA 71055
Ph: (800) 824-6614 www.niaonline.com

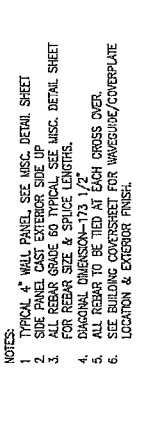
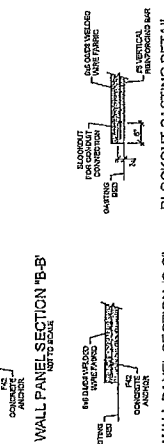
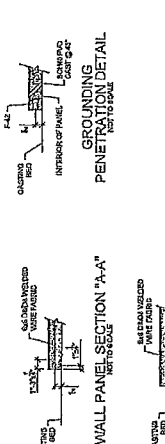
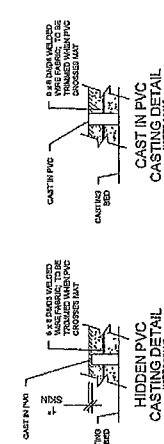
AT&T MOBILITY
STRUCTURAL LAYOUT
SIDE PANEL C

DATE: 11/26/14
BY: [Signature]
CHK: [Signature]
DATE: 11/26/14
BY: [Signature]
CHK: [Signature]

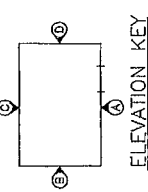
3/8" - 1" SHEET NO. S5
B REVISION D-9577

THESE PLANS ARE THE PROPERTY OF NIA INC. ANY REPRODUCTION OR DISTRIBUTION OF THESE PLANS WITHOUT THE WRITTEN PERMISSION OF NIA INC. IS STRICTLY PROHIBITED. NIA INC. ACCEPTS NO LIABILITY FOR DAMAGES, INCLUDING ATTORNEY'S FEES, ARISING FROM THE USE OF THESE PLANS. THE USER OF THESE PLANS SHALL BE RESPONSIBLE FOR OBTAINING ALL NECESSARY PERMITS AND APPROVALS FROM THE APPROPRIATE AGENCIES. THESE PLANS ARE TO BE USED ONLY FOR THE PROJECT AUTHORIZED BY NIA INC. ANY OTHER USE IS PROHIBITED.

REV.	BY	DATE	DESCRIPTION



- NOTES:
1. TYPICAL 'A' WALL PANEL, SEE MISC. DETAIL SHEET
 2. SIDE PANEL CAST EXTERIOR SIDE UP
 3. ALL REBAR GRADE 60 TYPICAL SEE MISC. DETAIL SHEET FOR REBAR SIZE & SPLICE LENGTHS.
 4. DIAGONAL DIMENSION-173 1/2"
 5. ALL REBAR TO BE TIED AT EACH CROSS OVER.
 6. SEE BUILDING COVERSHEET FOR WAVEGUIDE/COVERPLATE LOCATION & EXTERIOR FINISH.



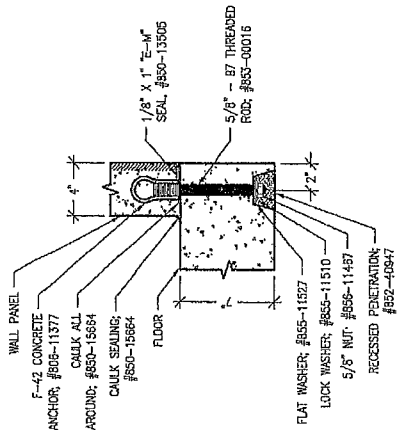
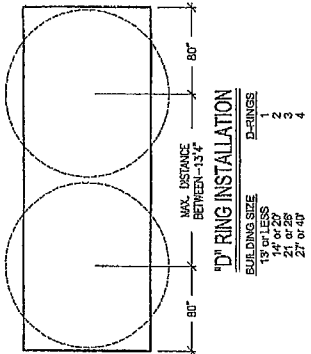
PANEL	APPROX. VOL. (Cu. Yds.)	APPROX. WT. (Tons)
	LT. WT.	NORMAL
ROOF	1.90	6.655
FLOOR	2.54	8.901
PANEL "A"	0.96	3.356
PANEL "B"	1.10	3.872
PANEL "C"	1.23	4.300
PANEL "D"	1.25	4.387
TOTAL	8.97	31.901

Refer to Individual Structural Layout sheet for actual panel size

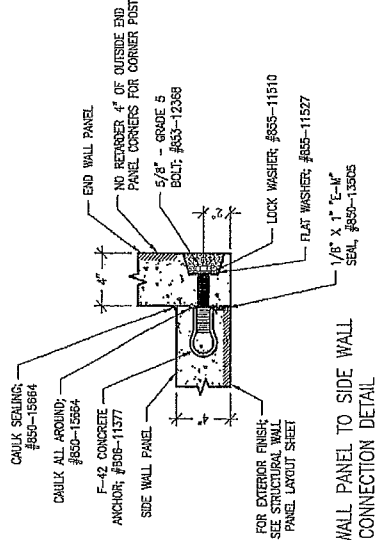
Note: Building weight is an approximation and shall not be used for Offsets or Shipping. Contact Fibrebond Corporation's Transportation Department for correct transportation weights.

SIZE	LIGHT WEIGHT CONCRETE	NORMAL WEIGHT CONCRETE
WWF	8"	8"
#2	12"	12"
#3	17"	13"
#4	22"	17"
#5	28"	22"
#6	33"	28"

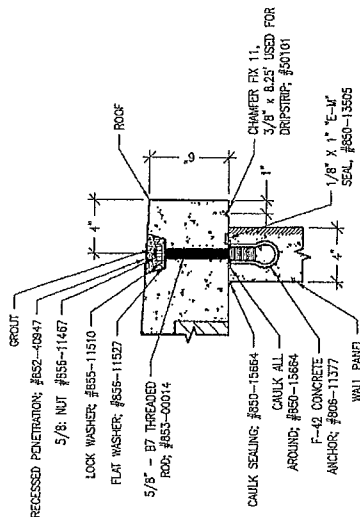
Stagger splice locations: 2X splice length in adjacent bays



TYPICAL WALL PANEL TO FLOOR CONNECTION DETAIL

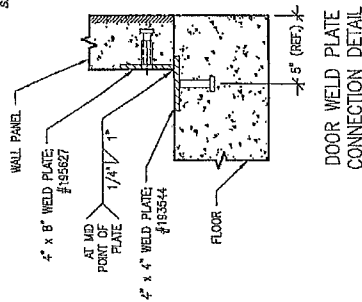


TYPICAL END WALL PANEL TO SIDE WALL PANEL CONNECTION DETAIL



TYPICAL ROOF TO WALL PANEL CONNECTION DETAIL

*** CAUTION: ROOF LIFT BUILDING ONLY ***



DOOR WELD PLATE CONNECTION DETAIL

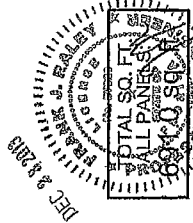
These prints comply with the Florida Manufactured Building Act and applicable Codes and standards. Components shall comply with ASTM F-1242.

APPROVED BY

NIA INC.

Approval of this document does not authorize or approve any deviation or variations from the requirements of applicable State Laws.

Const. Type: SB
 Occupancy: SB
 Allowable No. of Floors: 1
 Wind Velocity: 130 mph C
 Etc. Loading: D
 Plan No.: ME79-06977
 Allow. Floor Load: 250 PSF
 Approval Date: 1/16/2014
 Manufacturer: Fibrebond



1500 DAVENPORT DRIVE MINGEN LA, 71555
 PH: (504) 834-5514 www.fibrebond.com

AT&T MOBILITY
 11'-5" X 12'-0" EQUIPMENT SHELTER
 MISC. DETAILS

NO OTHER WORK SHALL BE PERFORMED ON THIS SHEET UNLESS SPECIFICALLY AUTHORIZED BY THE ENGINEER. ANY WORK SHALL BE PERFORMED IN ACCORDANCE WITH THE MANUFACTURING AND INSTALLATION MANUAL PROVIDED WITH THIS EQUIPMENT SHELTER. THESE CONNECTIONS MUST BE INSTALLED IN ACCORDANCE WITH THE MANUFACTURING AND INSTALLATION MANUAL PROVIDED WITH THIS EQUIPMENT SHELTER.

REV.	BY	DATE	REASON

REV.	BY	DATE	REASON

1900 DAVENPORT DRIVE MINGEN LA, 71555
 PH: (504) 834-5514 www.fibrebond.com

PANEL VOLUME / WEIGHT SCHEDULE

PANEL	APPROX. VOL. (Cu. Ft.)	APPROX. WT. (LBS.)	APPROX. WT. (KILOS)	
	LT. WT.	NORMAL	LT. WT.	NORMAL
ROOF	1.80	6,655	3,020	
FLOOR	2.54	9,801	4,443	
PANEL "A"	1.22	4,286	1,943	
PANEL "B"	1.10	3,872	1,757	
PANEL "C"	1.23	4,300	1,950	
PANEL "D"	0.58	3,477	1,580	
TOTAL	8.87	31,561	14,283	

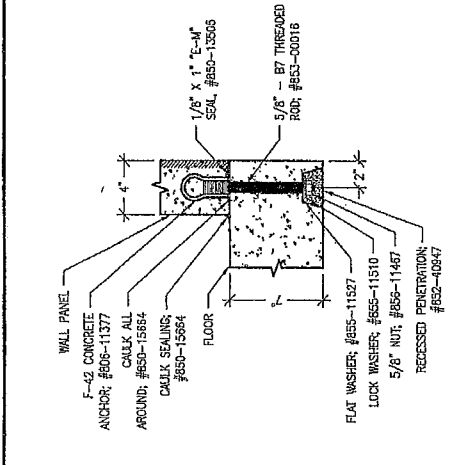
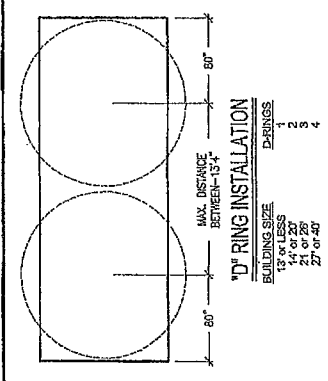
Refer to individual Structural Layout Sheet for actual panel size

Note:
Building weight for an approximation and shall not be used for design purposes. For exact weight, contact the Transportation Department for correct transportation weights.

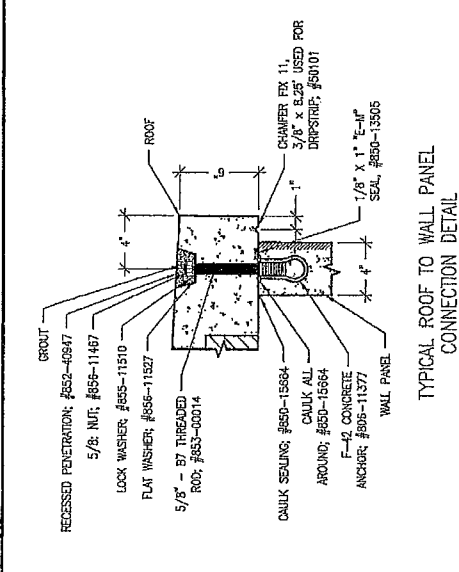
REINFORCING SPLICE SCHEDULE

SIZE	LIGHTWEIGHT CONCRETE	NORMAL WEIGHT CONCRETE
W/WF	8"	8"
#2	12"	12"
#3	17"	13"
#4	22"	17"
#5	28"	22"
#6	33"	28"

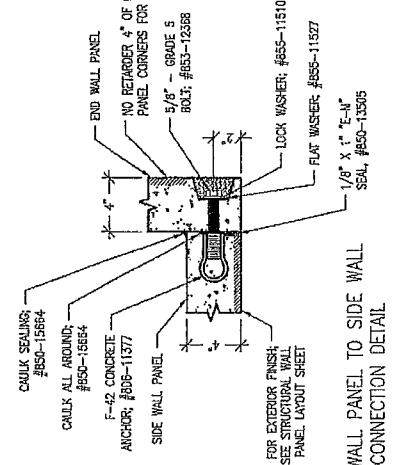
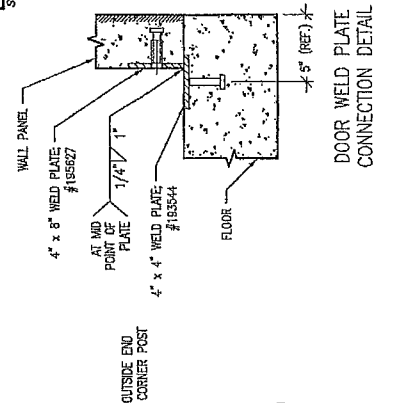
Stagger splice locations 2X splice length in adjacent bars



TYPICAL WALL PANEL TO FLOOR CONNECTION DETAIL

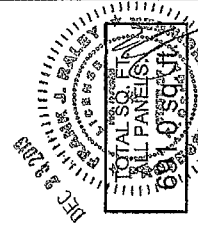


TYPICAL ROOF TO WALL PANEL CONNECTION DETAIL



TYPICAL END WALL PANEL TO SIDE WALL PANEL CONNECTION DETAIL

*** CAUTION: ROOF LIFT BUILDING ONLY ***



These prints comply with the Florida Manufactured Building Act and adopted Codes and all required components shall comply with 9B-72

APPROVED BY

NTA INC.

Approval Date: 1/16/2014

Manufacturer: Fibrebond

Approval of this document does not authorize or approve any deviation or variations from the requirements of applicable State Laws.

Cond. Type: S2

Occupancy: 1

Allowable No. of Floors: 150 max c

Wind Velocity: 0

Fire Rating of Erection: MFTZD-S27

Plan No.: 250 FSF

Allow. Floor Load: 17162014

REV.	BY	DATE	APP.	DATE	ISSUE

REVISION:

1810 DAVENPORT DRIVE MINDBEN, LA. 71055
PH. (810) 284-2814 www.fibrebond.com

FIBREBOND

AT&T MOBILITY

11'-5" X 12'-0" EQUIPMENT SHELTER

MISC. DETAILS

DATE: / /

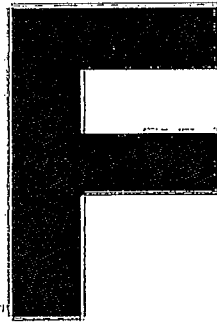
DATE: / /

DATE: / /

DATE: / /

SHEET: S2.1

OF: D-9577



FIBREBOND

State of Florida Plan Approval

Model: D-9577

11'5" x 12'0" x 9'0" Equipment Shelter

These prints comply with the Florida Manufactured Building Act and adopted Codes and all required components shall comply with 9B-72

APPROVED BY



Approval of this document does not authorize or approve any deviation or deviations from the requirements of applicable State Laws.

Const. Type:	VB
Occupancy:	S2
Allowable No. of Floors:	1
Wind Velocity:	190 exp c
Fire Rating of Ext. Walls:	0
Plan No.:	MFT27-D-9577
Allow Floor Load:	250 PSF
Approval Date:	1/16/2014
Manufacturer:	Fibrebond

Manufactured by:
Fibrebond Corporation
1300 Davenport Drive
Minden, Louisiana 71055
(Voice) 318-377-1030/800-824-2614
(Fax) 318-371-6391
www.fibrebond.com

MAN-DOOR LOAD RATING COMPLIANCE

DESIGN CODES AND STANDARDS

2010 Florida Building Code and all applicable design standards referenced there-in
 2012 International Building Code
 ASCE 7-10 Minimum Design Loads for Buildings and Other Structures

OCCUPANCY

Occupancy Category III

DESIGN WIND LOAD

Consider highest wind in the United States (200 mph exposure "D")

$V := 200 \text{ mph}$ $K_d := 0.85$ $K_{zt} := 1.0$ $G := 0.85$ $GC_{pi} := 0.18$ $GC_p := 1.4$

Exposure "D" --> $K_z(h) := \text{if}[h < 15, 1.03, 0.643 \cdot (h)^{0.1739}]$

$h_{max} := 15 \text{ ft}$ $q_z := 0.00256 \cdot K_z \left(\frac{h_{max}}{\text{ft}} \right) \cdot K_{zt} \cdot K_d \cdot V^2 \cdot \frac{\text{psf}}{\text{mph}^2}$ $q_z = 90 \text{ psf}$

Strength Design pressure $P_{WU} := q_z \cdot (GC_p + GC_{pi})$ $P_{WU} = 142 \text{ psf}$

Allowable Stress Design pressure $P_W := 0.6 \cdot P_{WU}$ $P_W = 85 \text{ psf}$

Per the door manufacturer's Certificate of Compliance certificate number 201203, the subject door is rated for an allowable working stress design load of 85 psf, with a factor of safety greater than 1.5 based on ANSI A250.13 testing procedures.

The maximum code (ASCE 7-10) working stress design wind load in the United States is 85 psf.

The door is rated to be placed anywhere in the United States.

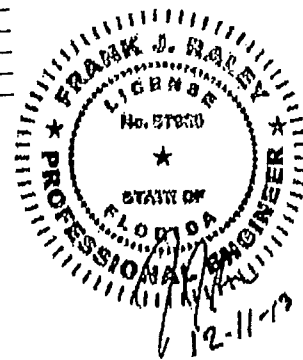
These prints comply with the Florida Manufactured Building Act and adopted Codes and all required components shall comply with 9B-72

APPROVED BY

NIA INC.

Approval of this document does not authorize or approve any deviation or deviations from the requirements of applicable State Laws.

Const. Type:	VB
Occupancy:	S2
Allowable No. of Floors:	1
Wind Velocity:	190 exp c
Fire Rating of Ext. Walls:	0
Plan No.:	MFT27-D-9577
Allow Floor Load:	250 PSF
Approval Date:	1/16/2014
Manufacturer:	Fibrebond



PRODUCT APPROVAL SCHEDULE

Manufacturer: Fibrebond Corporation

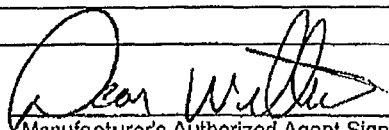
Plan # D-9577

As required by Florida Statute 553.842 and Florida Administrative Code 61G20-3.006, please provide the information and the product approval number(s) on the building components listed below if they will be utilized on the manufactured building for which you are applying for NTA certification. We recommend that you contact your product supplier should you not know the product approval number for any of the applicable listed products. More information about statewide product approval can be obtained at www.floridabuilding.org.

Category	Manufacturer	Product Description	Approval #(s)
EXTERIOR DOORS			
Swinging	Premier	(1)3070 18,GA GALV.	FL6378-R3
Other - Hinge	Hager	BB1191 Five Knuckle ball brg.hinge	FL6378-R3
Other - Lock	Best	Mortise Lock w/lever handle	FL16202.1
ROOFING PRODUCTS			
Single Ply Roofing Sys.	KST Coatings	Uniflex Roof Coating	FL12895-R1

The products listed below did not demonstrate product approval at plan review. I understand that at the time of inspection of these products, the following information must be available to the inspector at the manufacturing plant: (1) Copy of the product approval from the Local or State Building Commission, or supply all of the information listed on Form No.9B-72.130(5). (2) Copy of the applicable manufacturers' installation requirements.

I understand these products may have to be removed if approval cannot be demonstrated during inspection.



Manufacturer's Authorized Agent Signature

Dean Williams

Printed Name

12/20/2013

Date

These prints comply with the Florida Manufactured Building Act and adopted Codes and all required components shall comply with 9B-72

APPROVED BY



Approval of this document does not authorize or approve any deviation or deviations from the requirements of applicable State Laws

Const Type: VB
 Occupancy: S2
 Allowable No. of Floors: 1
 Wind Velocity: 190 exp c
 Fire Rating of Ext. Walls: 0
 Plan No.: MFT27-D-9577
 Allow Floor Load: 250 PSF
 Approval Date: 1/16/2014
 Manufacturer: Fibrebond

XHEZ, W-L-1001 - Through-penetration Firestop System

These prints comply with the Florida Manufactured Building Act and adopted Codes and all required components shall comply with 9B-72

Const. Type:	VB
Occupancy:	S2
Allowable No. of Floors:	1
Wind Velocity:	110 mph
Fire Rating of Ext. Walls:	0
Plan No.:	MFT27-D-9577
Allow. Floor Load:	260 PSF
Approval Date:	1/18/2014
Manufacturer:	Fibrebond

APPROVED BY



Approval of this document does not authorize or approve any deviation or deviations from the requirements of applicable State Laws.



XHEZ, W-L-1001
Through-penetration Firestop Systems

Page Bottom

Design/System/Construction/Assembly Usage Disclaimer

- Authorities Having Jurisdiction should be consulted in all cases as to the particular requirements covering the installation and use of UL Listed or Classified products, equipment, system, devices, and materials.
- Authorities Having Jurisdiction should be consulted before construction.
- Fire resistance assemblies and products are developed by the design submitter and have been investigated by UL for compliance with applicable requirements. The published information cannot always address every construction nuance encountered in the field.
- When field issues arise, it is recommended the first contact for assistance be the technical service staff provided by the product manufacturer noted for the design. Users of fire resistance assemblies are advised to consult the general Guide Information for each product category and each group of assemblies. The Guide Information includes specifics concerning alternate materials and alternate methods of construction.
- Only products which bear UL's Mark are considered as Classified, Listed, or Recognized.

Through-penetration Firestop Systems

See General Information for Through-penetration Firestop Systems

System No. W-L-1001

June 15, 2005

F Ratings — 1, 2, 3 and 4 Hr (See Items 2 and 3)

T Ratings — 0, 1, 2, 3, and 4 Hr (See Item 3)

L Rating At Ambient — less than 1 CFM/sq ft

L Rating At 400 F — less than 1 CFM/sq ft

