



10 Jun 2026 2:07:08 p.m.
148 Southwest Voyager Court
Lake City
Columbia County
Florida



10 jun 2026 1:44:32 p.m.
219 Southwest Plantation Terrace
Lake City
Columbia County
Florida



10 jun 2026 1:44:41 p.m.
219 Southwest Plantation Terrace
Lake City
Columbia County
Florida



01-20-25 20:30 555

A large sheet of plywood is shown, likely in a construction or storage area. The plywood has a natural wood grain pattern with several knots and some staining. A date and location stamp is overlaid in the bottom right corner. The stamp reads: "10 jun 2026 1:43:56 p.m.", "219 Southwest Plantation Terrace", "Lake City", "Columbia County", "Florida".

10 jun 2026 1:43:56 p.m.
219 Southwest Plantation Terrace
Lake City
Columbia County
Florida



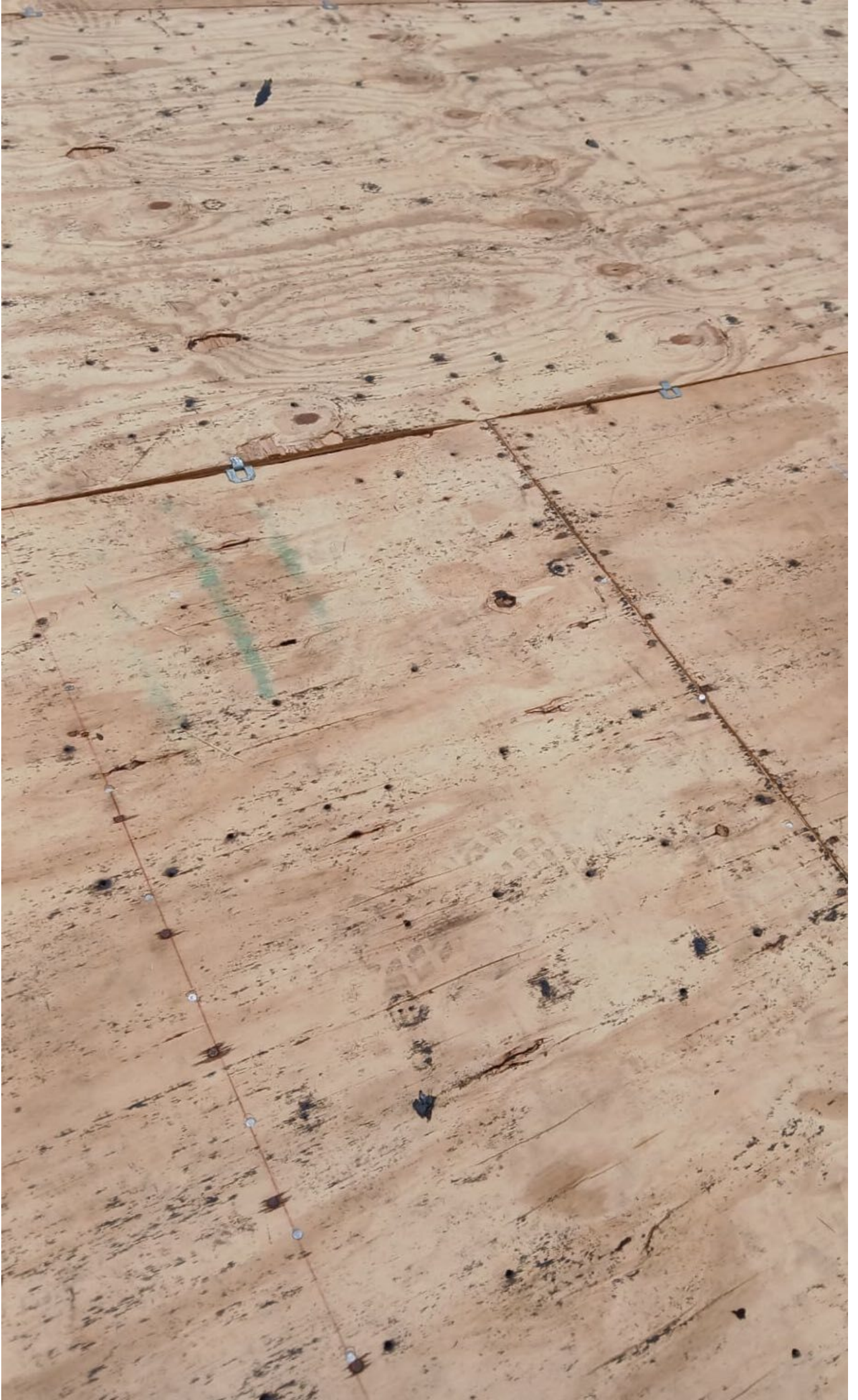
11 jun 2026 11:59:06 a.m.
245 Southwest Plantation Terrace
Lake City
Columbia County
Florida



11 jun 2026 11:59:09 a.m.
245 Southwest Plantation Terrace
Lake City
Columbia County
Florida



11 jun 2026 11:58:33 a.m.
251 Southwest Plantation Terrace
Lake City
Columbia County
Florida





11 jun 2026 3:26:55 p.m.
251 Southwest Plantation Terrace
Lake City
Columbia County
Florida

8

11 jun 2026 3:26:50 p.m.
251 Southwest Plantation Terrace
Lake City
Columbia County
Florida



11 jun 2026 5:24:16 p.m.
251 Southwest Plantation Terrace
Lake City
Columbia County
Florida



11 jun 2026 5:24:00 p.m.
251 Southwest Plantation Terrace
Lake City
Columbia County
Florida



11 jun 2026 5:09:43 p.m.
271 Southwest Plantation Terrace
Lake City
Columbia County
Florida



11 jun 2026 5:20:23 p.m.
245 Southwest Plantation Terrace
Lake City
Columbia County
Florida



11 jun 2026 5:09:38 p.m.
271 Southwest Plantation Terrace
Lake City
Columbia County
Florida



11 jun 2026 5:10:33 p.m.
245 Southwest Plantation Terrace
Lake City
Columbia County
Florida



APPROVED
FOR A MIAMI DADE APPROVED

MIAMI DADE APPROVED

RESISTANCE TO ICE - SNOW - RAIN BARRIER

ASTM D4198, ICC ES AC108 (TABLE 1) FBC & MIAMI DADE APPROVED
GRIP-RITE.COM



3RD PARTY TEST

H



Membrayment-HT

RESISTANCE TO ICE • SNOW • RAIN BARRIER

D6798, ICC ES ACT188 (TABLE 1) FBC & MIAMI DADE APPROVED

GRIP-RITE.COM



HIGH

3RD PARTY TESTED





**HIGH TEMPERATURE
SELF-ADHERING
ICE · SNOW · RAIN BARRIER**

**SELF-SEALING
MEMBRANE
UNDERLAYMENT**

**HIGH TEMPERATURE
ICE · SNOW · RAIN BARRIER**

**MEMBRANE
UNDERLAYMENT**

SELVAGE EDGE

SELVAGE EDGE

SELVAGE EDGE

SELVAGE EDGE

SELVAGE EDGE

SELVAGE EDGE

SELVAGE EDGE

SELVAGE EDGE

SELVAGE EDGE



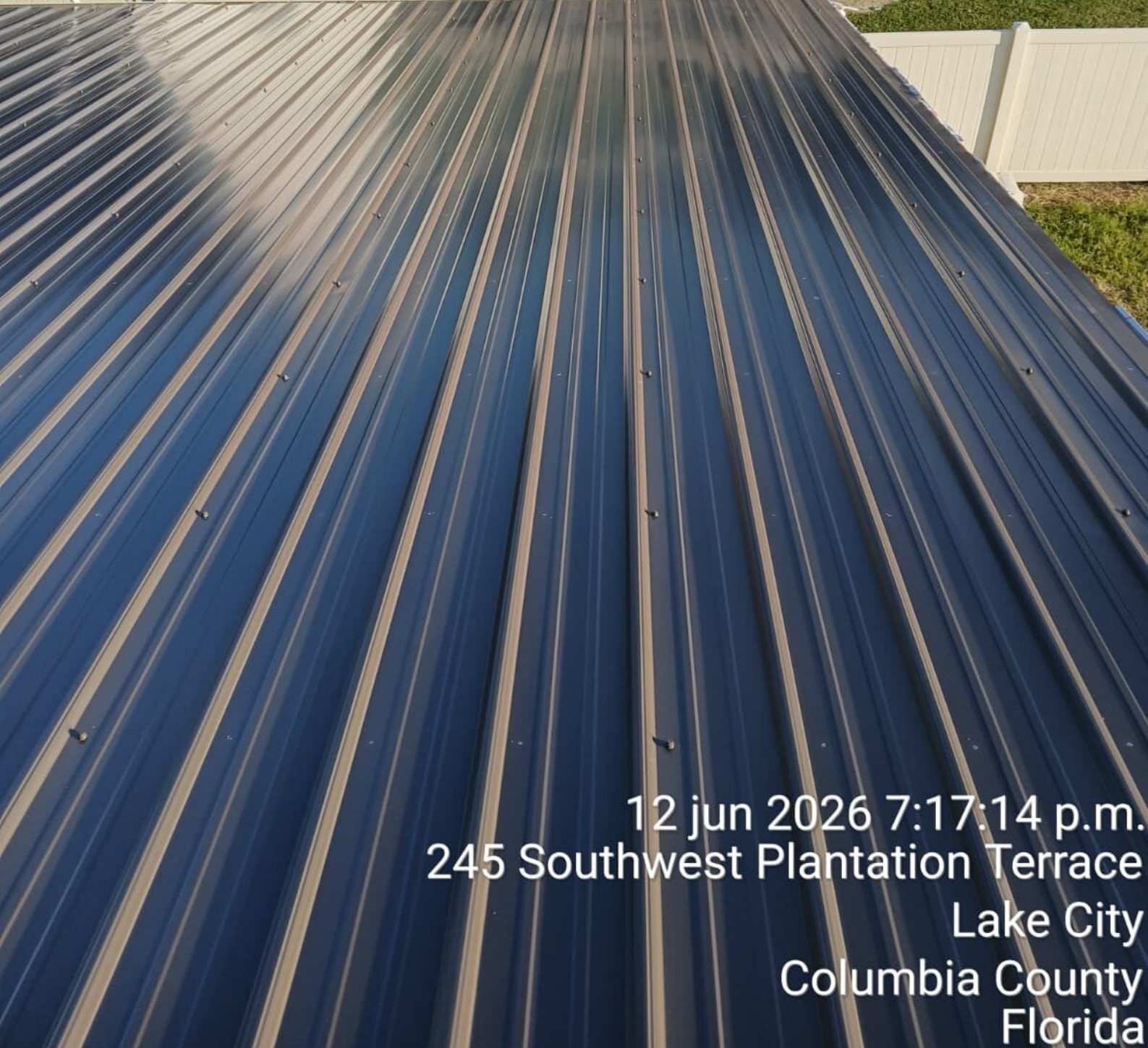


3RD PARTY TESTED: ASTM D1970, ASTM D4798, ICC ES AC188 (TABLE 1) FBC & MIAMI DAD APPROVED

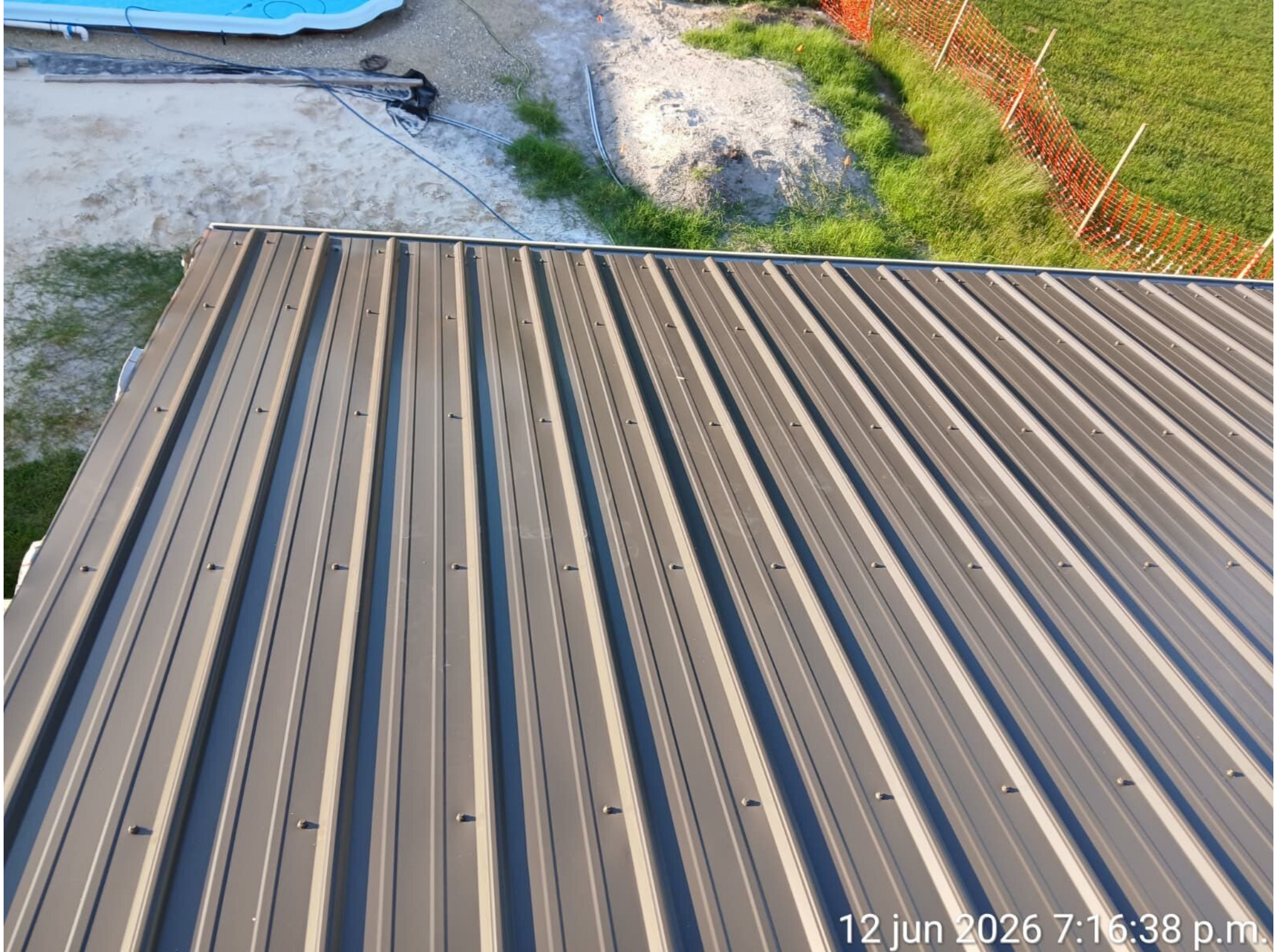
MIAMI CRUISE RITE.COM

3RD PARTY TESTED: ASTM D1970, ASTM D4798, ICC ES AC188 (TABLE 1) FBC & MIAMI DAD





12 jun 2026 7:17:14 p.m.
245 Southwest Plantation Terrace
Lake City
Columbia County
Florida



12 jun 2026 7:16:38 p.m.



12 jun 2026 7:16:11 p.m.
120 Southwest Voyager Court
Lake City
Columbia County
Florida



12 jun 2026 7:16:17 p.m.
120 Southwest Voyager Court
Lake City
Columbia County
Florida

12 jun 2026 10:55:40 a.m.
251 Southwest Plantation Terrace
Lake City
Columbia County
Florida

Grip Rite Shinglelayment-HT
HIGH TEMPERATURE ICE • SNOW • RAIN BARRIER
SELF-SEALING SYNTHETIC UNDERLAYMENT
3RD PARTY TESTED: ASTM D1970, ASTM D4798, ICC ES AC188 (TABLE 1) FBC & MIAMI DADE APPROVED
WWW.GRIP-RITE.COM

Grip Rite Shinglelayment-HT
HIGH TEMPERATURE ICE • SNOW • RAIN BARRIER
SELF-ADHERING SELF-ADHERING ICE • SNOW • RAIN BARRIER
3RD PARTY TESTED: ASTM D1970, ASTM D4798, ICC ES AC188 (TABLE 1) FBC & MIAMI DADE APPROVED
WWW.GRIP-RITE.COM

Grip Rite Shinglelayment-HT
HIGH TEMPERATURE ICE • SNOW • RAIN BARRIER
SELF-SEALING SYNTHETIC UNDERLAYMENT
3RD PARTY TESTED: ASTM D1970, ASTM D4798, ICC ES AC188 (TABLE 1) FBC & MIAMI DADE APPROVED
WWW.GRIP-RITE.COM

Grip Rite Shinglelayment-HT
HIGH TEMPERATURE ICE • SNOW • RAIN BARRIER
SELF-ADHERING SELF-ADHERING ICE • SNOW • RAIN BARRIER
3RD PARTY TESTED: ASTM D1970, ASTM D4798, ICC ES AC188 (TABLE 1) FBC & MIAMI DADE APPROVED
WWW.GRIP-RITE.COM

OVERLAP LINE
SEWAGE EDGE



13 jun 2026 1:07:16 p.m.
245 Southwest Plantation Terrace
Lake City
Columbia County
Florida



13 jun 2026 1:07:39 p.m.
245 Southwest Plantation Terrace
Lake City
Columbia County
Florida

