

APPLICABLE CODES AND STANDARDS

- 2020 FLORIDA BUILDING CODE (7TH EDITION)
- 2018 INTERNATIONAL BUILDING CODE
- ASCE 7-16: MINIMUM DESIGN LOADS ON BUILDINGS AND OTHER STRUCTURES
- AISC STEEL CONSTRUCTION MANUAL (15TH EDITION)
- ACI 318-14: BUILDING CODE REQUIREMENTS FOR STRUCTURAL CONCRETE
- TMS 402-16: BUILDING CODE REQUIREMENTS FOR MASONRY STRUCTURES
- AWS D1.1: STRUCTURAL WELDING

DESIGN LOADS

- DEAD LOAD = 15 PSF
 - LIVE LOAD = 20 PSF
 - WIND LOAD (SEE TABLE 1)
- A. RISK CATEGORY = II
 B. WIND EXPOSURE CATEGORY = C
 C. ULTIMATE WIND SPEED = 120 MPH
 NOMINAL WIND SPEED = 93 MPH

INSTALLATION NOTES AND SPECIFICATIONS

- END WALL COLUMNS (POST) AND SIDE WALL COLUMNS ARE EQUIVALENT IN SIZE AND SPACING U.N.O.
- SPECIFICATIONS APPLICABLE TO 29 GA METAL PANELS FASTENED DIRECTLY TO 2.5"X2.5"X14 GA TUBE STEEL (TS) FRAMING MEMBERS FOR VERTICAL PANELS. 29 GA METAL PANELS SHALL BE FASTENED DIRECTLY TO 18 GA HAT CHANNELS U.N.O.
- AVERAGE FASTENER SPACING ON-CENTERS ALONG RAFTERS OR PURLINS, AND POSTS, INTERIOR = 9" AND END = 6" MAX.
- FASTENERS CONSIST OF #12-14X3/4" SELF-DRILLING SCREWS (SDS), USE CONTROL SEAL WASHER WITH EXTERIOR FASTENERS. SPECIFICATIONS APPLICABLE ONLY FOR MEAN ROOF HEIGHT OF 20'-0" OR LESS, AND ROOF SLOPES OF 19° (4:12 PITCH) OR LESS. SPACING REQUIREMENTS FOR OTHER ROOF HEIGHTS AND/OR SLOPES MAY VARY.
- ANCHORS SHALL BE INSTALLED THROUGH THE BASE RAIL WITHIN 6" OF EACH RAFTER COLUMN ALONG SIDES AND ENDS.
- STANDARD GROUND ANCHORS (SOIL NAILS) CONSIST OF #4 REBARS WITH WELDED NUT X 30" LONG AND MAY BE USED IN SUITABLE SOILS. OPTIONAL ANCHORAGE MAY BE USED IN SUITABLE SOILS AND MUST BE USED IN UNSUITABLE SOILS AS NOTED. SOIL NAILS MAY BE USED FOR WIND SPEEDS LESS THAN OR EQUAL TO 145 MPH.
- RAFTER SPACING IS 5'-0" FOR WIND SPEEDS BETWEEN 110 MPH AND 140 MPH AND 4'-0" FOR WIND SPEEDS BETWEEN 140 MPH AND 180 MPH.

DRAWING INDEX

PAGE NO.	DESCRIPTION
1	NOTES AND SPECIFICATIONS
2	BOX EAVE FRAME RAFTER ENCLOSED BUILDING
3	CONNECTION DETAILS (1-2)
4	BASE RAIL AND FOUNDATION ANCHORAGE
5	BOX EAVE RAFTER END WALL, SIDE WALL AND OPENING FRAMING
6	CONNECTION DETAILS (4-10)
7	CONNECTION DETAILS (11-14)
8	BOX EAVE RAFTER LEAN-TO OPTIONS
9	CONNECTION DETAILS (16-18)
10	BOX EAVE RAFTER VERTICAL ROOF/SIDING OPTION
11	OPTIONAL CONCRETE STRIP FOOTING
12	OPTIONAL HELICAL ANCHORING DETAIL

ENCLOSED METAL BUILDING DESIGN

MAXIMUM 60'-0" WIDE X 20'-0" EAVE HEIGHT

BOX EAVE FRAME

This item has been electronically signed and sealed by Craig E. Gunderson, P.E. on date below using a Digital Signature. Printed copies of this document are not considered signed and sealed and the signature must be verified on any electronic copies.

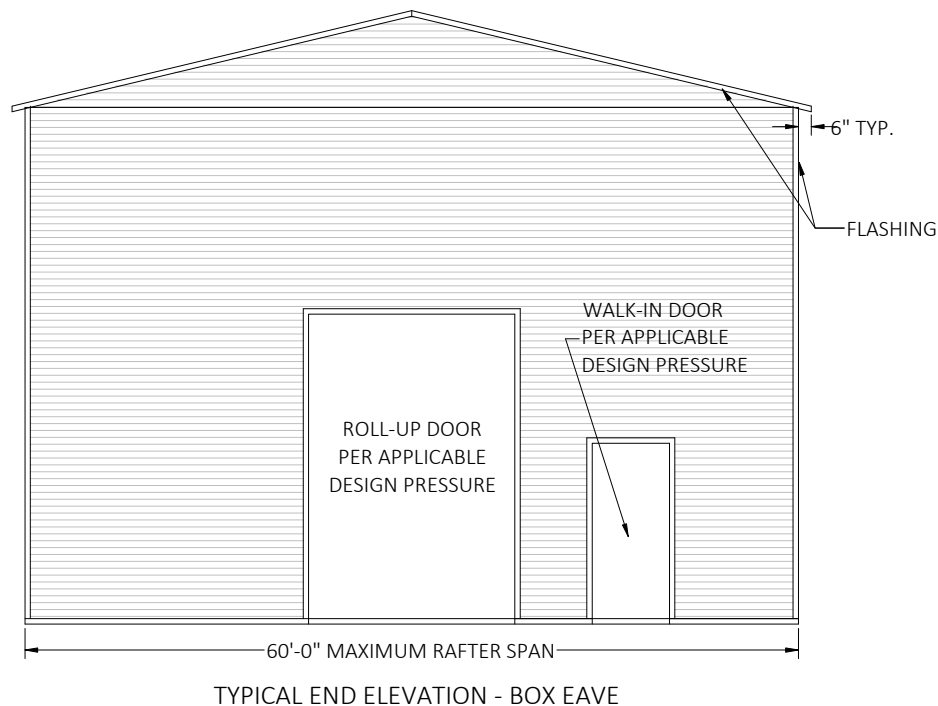
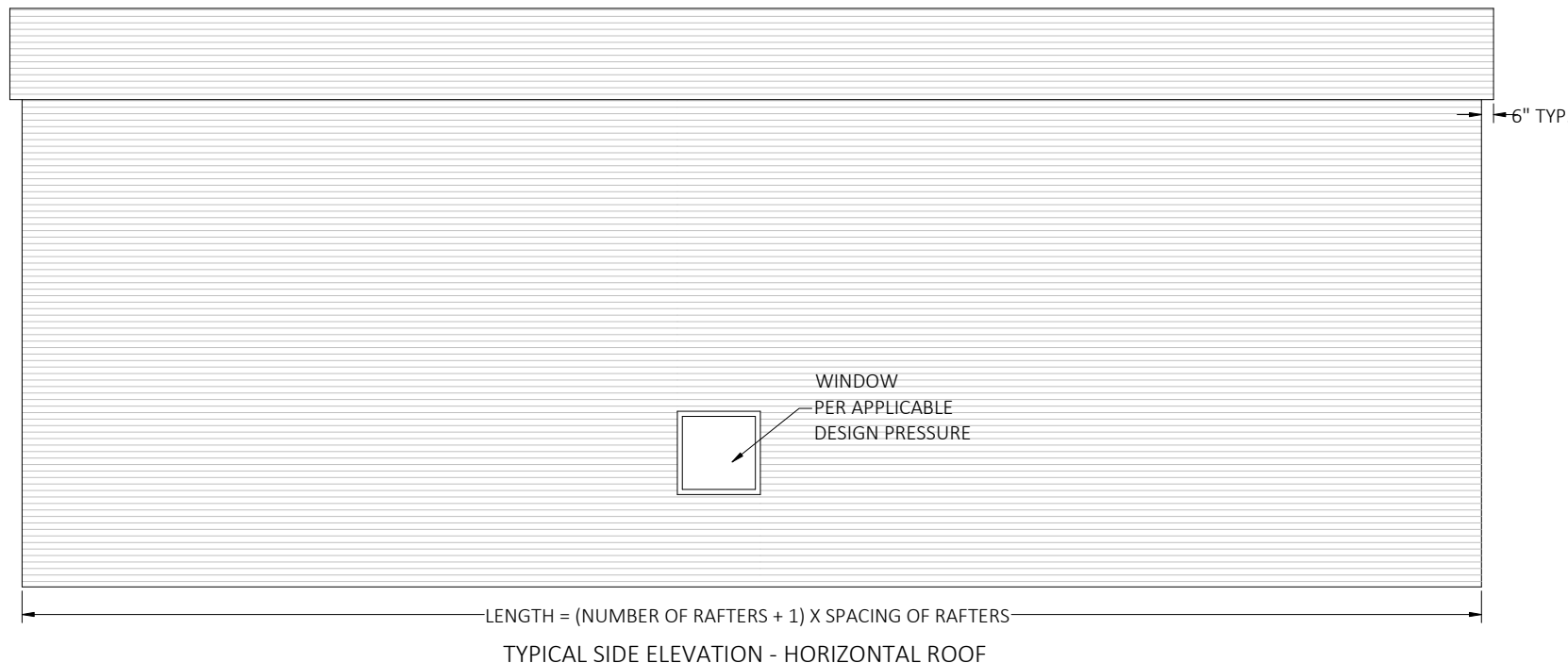


TABLE 1

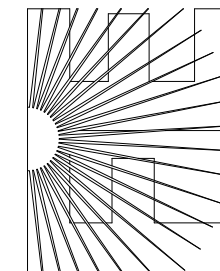
MEMBER	PRODUCT APPROVAL NUMBER	WIND DESIGN PRESSURES
ROOF PANELS	FL39466	+12.1 PSF / -40.2 PSF
WALL PANELS	FL39594	+16.8 PSF / -21.3 PSF
GARAGE DOOR	CTP	+16.8 PSF / -21.3 PSF
WALK-IN DOOR	CTP	+16.8 PSF / -21.3 PSF

DESIGN WIND PRESSURES	120 MPH
ZONE 1	+12.1 PSF / -21.2 PSF
ZONE 2	+12.1 PSF / -34.5 PSF
ZONE 3	+12.1 PSF / -40.2 PSF
ZONE 4	+16.8 PSF / -18.4 PSF
ZONE 5	+16.8 PSF / -21.3 PSF

CTP = CONTRACTOR TO PROVIDE
 2020 FBC APPROVED PRODUCTS
 THAT MEET OR EXCEED DESIGN
 PRESSURES AS TABULATED



FLORIDA ENGINEERING LLC
 4161 TAMiami TRAIL, UNIT 101
 PORT CHARLOTTE, FLORIDA 33952
 (941) 391-5980
 www.flengineeringllc.com



CONTRACTOR:
ELITE METAL MANUFACTURING

PROJECT ADDRESS:
 32'-60' PLANS
 10121 88TH TRACE,
 LIVE OAK FL 32060

DESIGN DATE: 06/24/2022

REVISION 1: DATE

REVISION 2: DATE PAGE :

DRAWN BY: SK

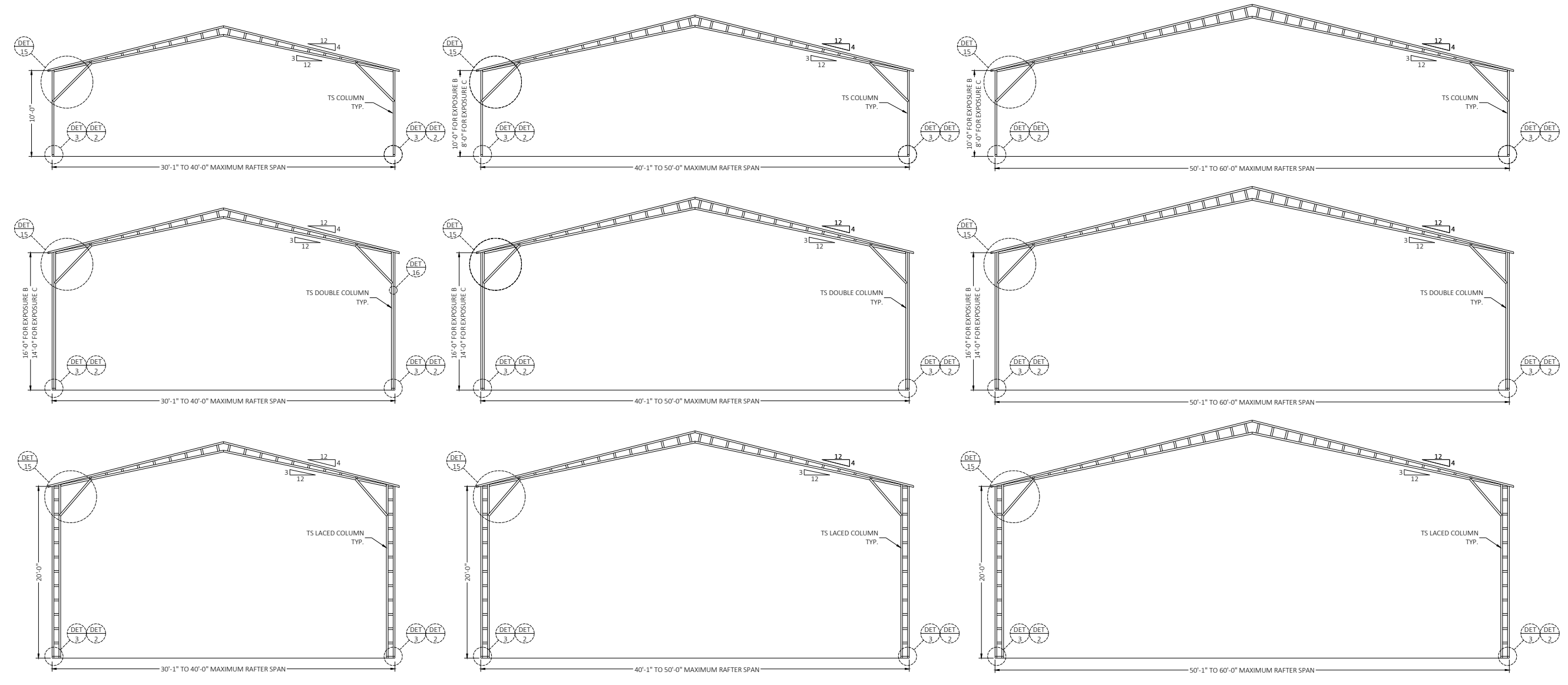
SCALE: NTS

1

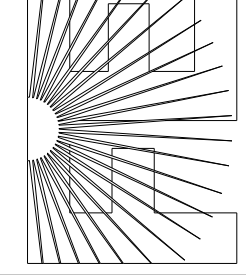
PROJECT NO. 2217229

CA CERT. #30782

This item has been electronically signed and sealed by Craig E. Gunderson, P.E. on date below using a Digital Signature. Printed copies of this document are not considered signed and sealed and the signature must be verified on any electronic copies.



FLORIDA ENGINEERING LLC
 4161 TAMiami TRAIL, UNIT 101
 PORT CHARLOTTE, FLORIDA 33952
 (941) 391-5980
www.flengineeringllc.com



PROJECT NO. 2217229

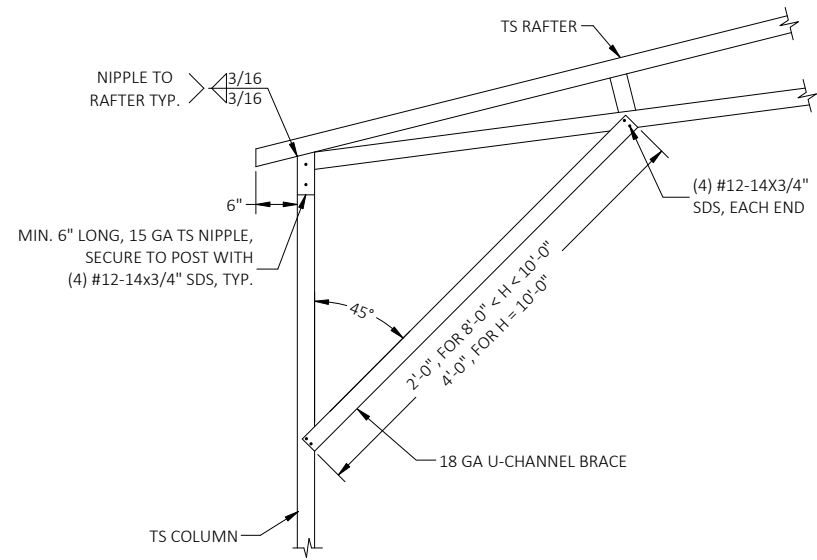
CA CERT. #30782

CONTRACTOR:
**ELITE METAL
 MANUFACTURING**

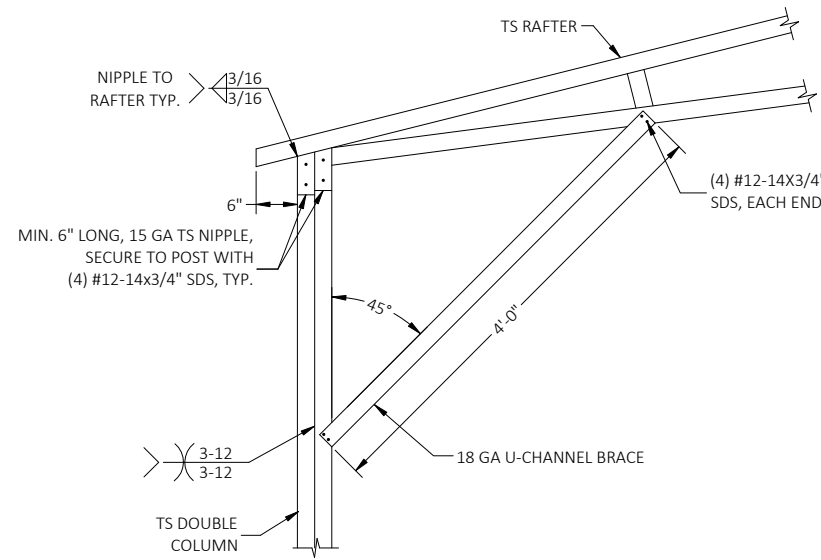
PROJECT ADDRESS:
 32'-60' PLANS
 10121 88TH TRACE,
 LIVE OAK FL 32060

DESIGN DATE:	06/24/2022	PAGE :
REVISION 1:	DATE	
REVISION 2:	DATE	2
DRAWN BY:	SK	
SCALE:	NTS	

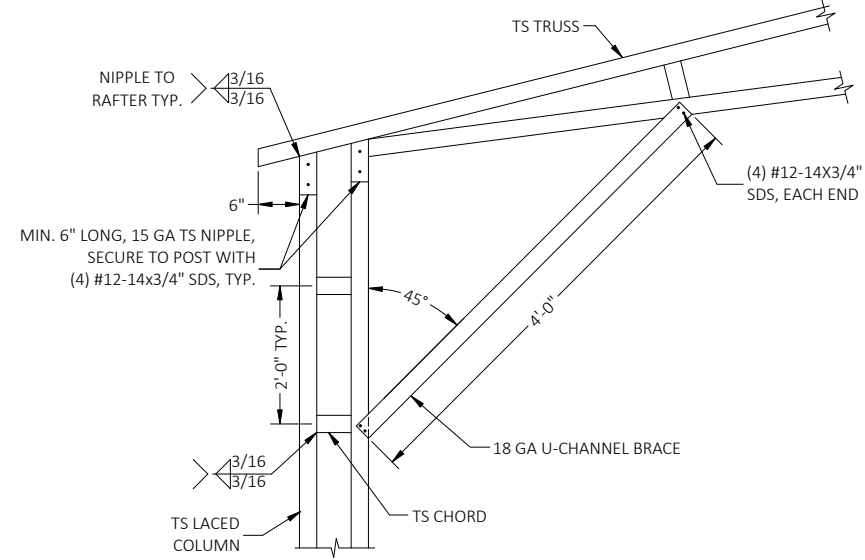
This item has been electronically signed and sealed by Craig E. Gunderson, P.E. on date below using a Digital Signature. Printed copies of this document are not considered signed and sealed and the signature must be verified on any electronic copies.



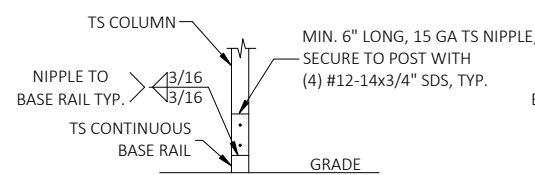
DETAIL 1A
BOX EAVE RAFTER/CORNER POST CONNECTION
30'(MAX.)W X 12'H



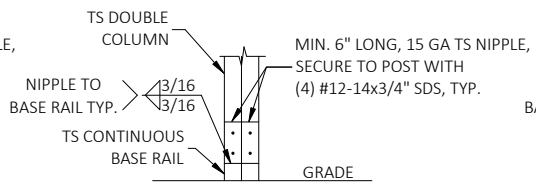
DETAIL 1C
BOX EAVE RAFTER/CORNER POST CONNECTION
30'(MAX.)W X 16'H



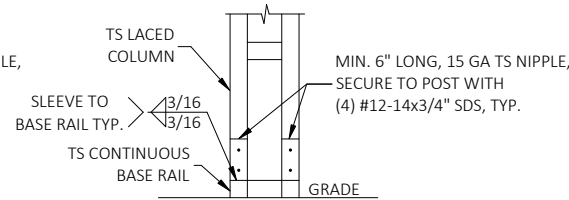
DETAIL 1E
BOX EAVE RAFTER/CORNER POST CONNECTION
30'(MAX.)W X 20'H



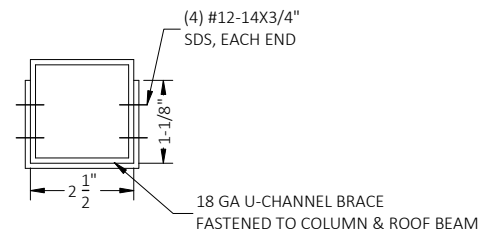
DETAIL 2A
POST/BASE RAIL CONNECTION



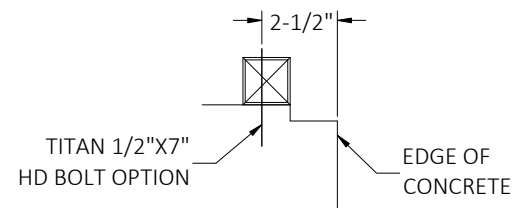
DETAIL 2B
POST/BASE RAIL CONNECTION



DETAIL 2C
POST/BASE RAIL CONNECTION

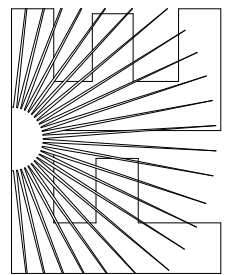


BRACE SECTION



SECTION
(OPTION-2)

FLORIDA ENGINEERING LLC
4161 TAMiami TRAIL, UNIT 101
PORT CHARLOTTE, FLORIDA 33952
(941) 391-5980
www.flengineeringllc.com



CA CERT. #30782

PROJECT NO. 2217229

CONTRACTOR:
ELITE METAL MANUFACTURING

PROJECT ADDRESS:
32'-60' PLANS
10121 88TH TRACE,
LIVE OAK FL 32060

DESIGN DATE:	06/24/2022
REVISION 1:	DATE
REVISION 2:	DATE
DRAWN BY:	SK
SCALE:	NTS

GENERAL NOTES

CONCRETE MONOLITHIC SLAB DESIGN IS BASED ON A MINIMUM SOIL BEARING CAPACITY OF 1500 PSF.

CONCRETE

MINIMUM 28-DAY SPECIFIED COMPRESSIVE STRENGTH = 3000 PSI

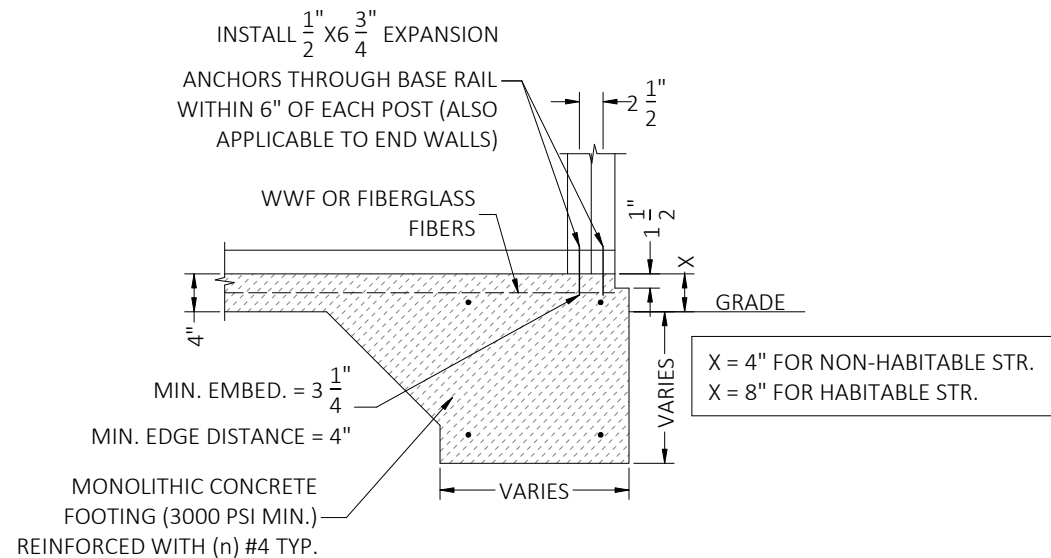
REINFORCING STEEL

1. TURNDOWN REINFORCING STEEL = ASTM A615 GRADE 60
2. SLAB REINFORCEMENT = WELDED WIRE FABRIC PER ASTM A185 OR FIBERGLASS FIBER REINFORCEMENT
3. REINFORCING STEEL COVER = 3" WHERE CASE AGAINST AND PERMANENTLY EXPOSED TO SOIL OR WATER, 1.5" EVERYWHERE ELSE.
4. REINFORCEMENT IS BENT COLD.
5. MINIMUM INSIDE DIAMETER OF BEND = (6) BAR DIAMETERS
6. REINFORCEMENT PARTIALLY EMBEDDED IN CONCRETE SHALL NOT BE FIELD BENT.

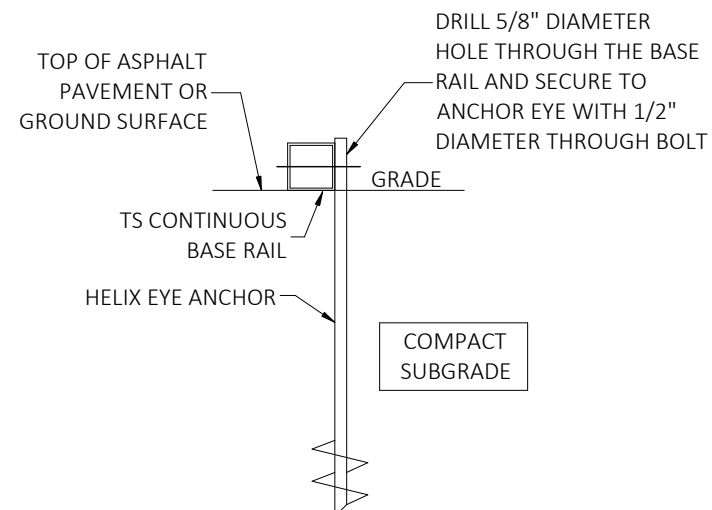
HELIX ANCHOR NOTES

1. FOR VERY DENSE AND/OR CEMENTED SANDS, COARSE GRAVEL AND COBBLES, CALICHE, PRELOADED SILTS AND CLAYS, CORALS, MEDIUM DENSE COARSE SANDS, SANDY GRAVELS, VERY STIFF SILTS AND CLAYS, USE MINIMUM (2) 4" HELICES WITH MINIMUM 30" EMBEDMENT.
2. FOR LOOSE TO MEDIUM DENSE SANDS, FIRM TO STIFF CLAYS AND SILTS, ALLUVIAL FILL, USE MINIMUM (2) 6" HELICES WITH MINIMUM 50" EMBEDMENT.
3. FOR VERY LOOSE TO MEDIUM DENSE SANDS, FIRM TO STIFFER CLAYS AND SILTS, ALLUVIAL FILL, USE MINIMUM (2) 8" HELICES WITH MINIMUM 60" EMBEDMENT.

MONOLITHIC FOOTER SIZE	
110 C - 140 C	8"X8" - (2) #4
ABOVE 140 C	16"X16" - (4) #4

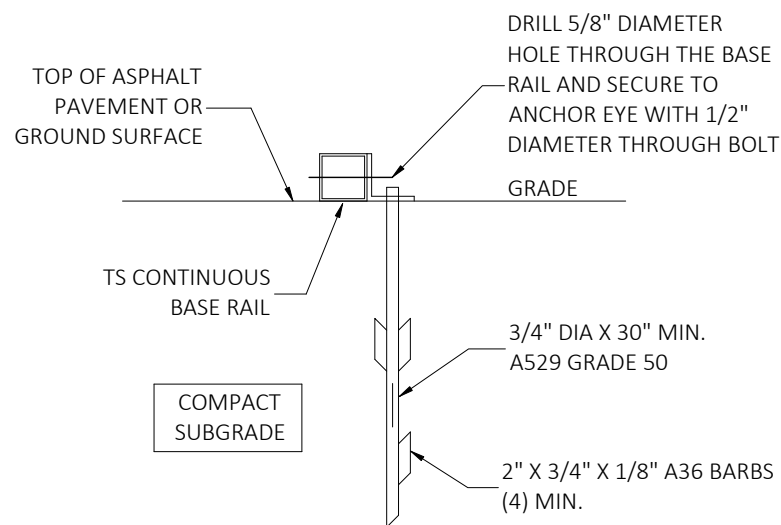


DETAIL 3A
CONCRETE MONOLITHIC SLAB BASE RAIL ANCHORAGE

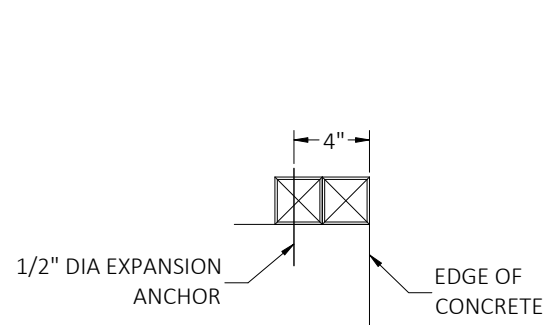


DETAIL 3B
GROUND BASE HELIX ANCHORAGE

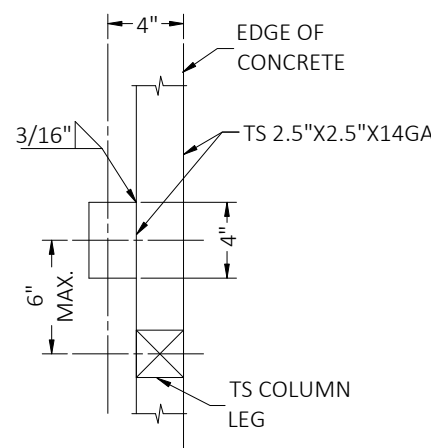
BASE RAIL ANCHORAGE OPTIONS



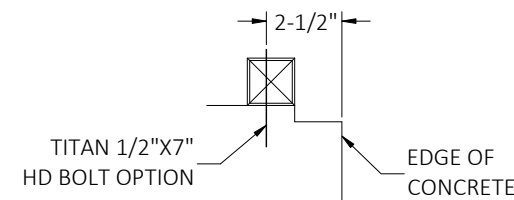
DETAIL 3C
ASPHALT BASE ANCHORAGE
(HP 9 BARBED DRIVE ANCHOR)



SECTION
(OPTION-1)



TOP VIEW
(OPTION-1)



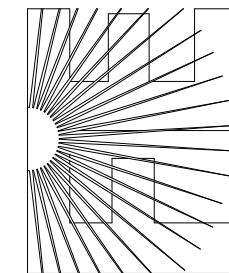
SECTION
(OPTION-2)

TYPICAL ANCHOR DETAIL WHEN BASE RAIL IS NEAR EDGE OF CONCRETE

BASE RAIL ANCHORAGE OPTION

This item has been electronically signed and sealed by Craig E. Gunderson, P.E. on date below using a Digital Signature. Printed copies of this document are not considered signed and sealed and the signature must be verified on any electronic copies.

FLORIDA ENGINEERING LLC
4161 TAMiami TRAIL, UNIT 101
PORT CHARLOTTE, FLORIDA 33952
(941) 391-5980
www.flengineeringllc.com



CA CERT. #30782

PROJECT NO. 2217229

CONTRACTOR:
ELITE METAL MANUFACTURING

PROJECT ADDRESS:
32'-60' PLANS
10121 88TH TRACE,
LIVE OAK FL 32060

DESIGN DATE: 06/24/2022

REVISION 1: DATE

REVISION 2: DATE

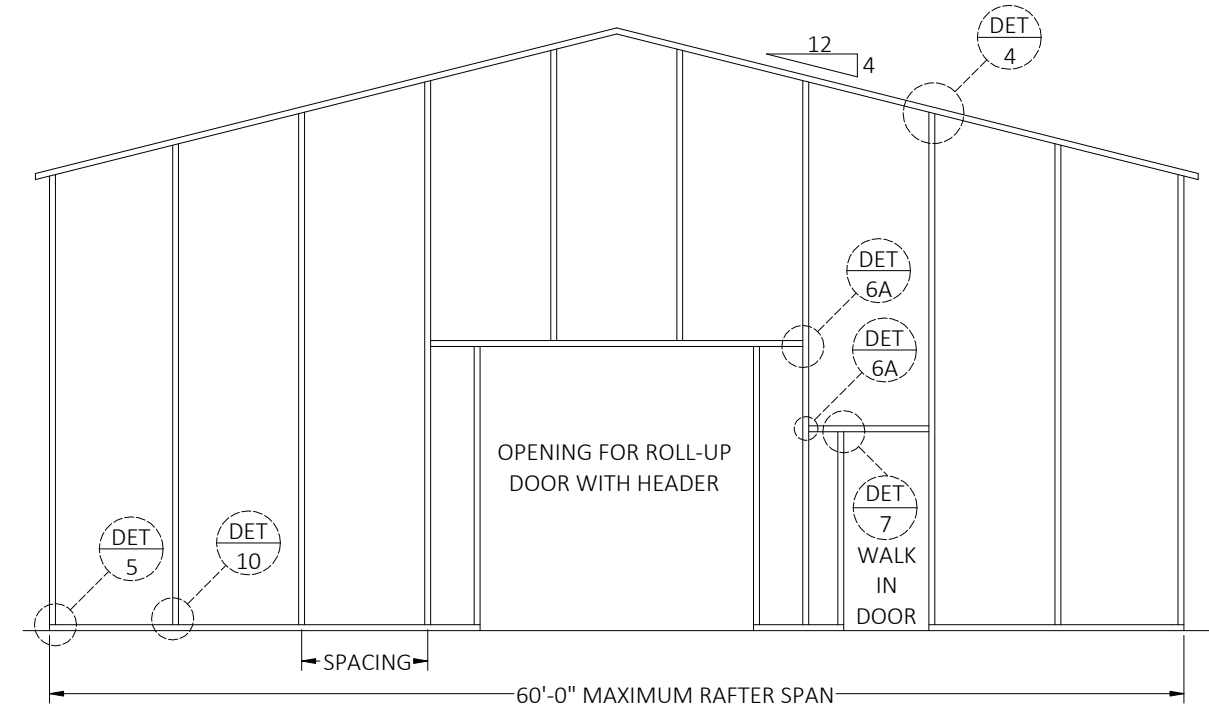
DRAWN BY: SK

SCALE: NTS

PAGE :

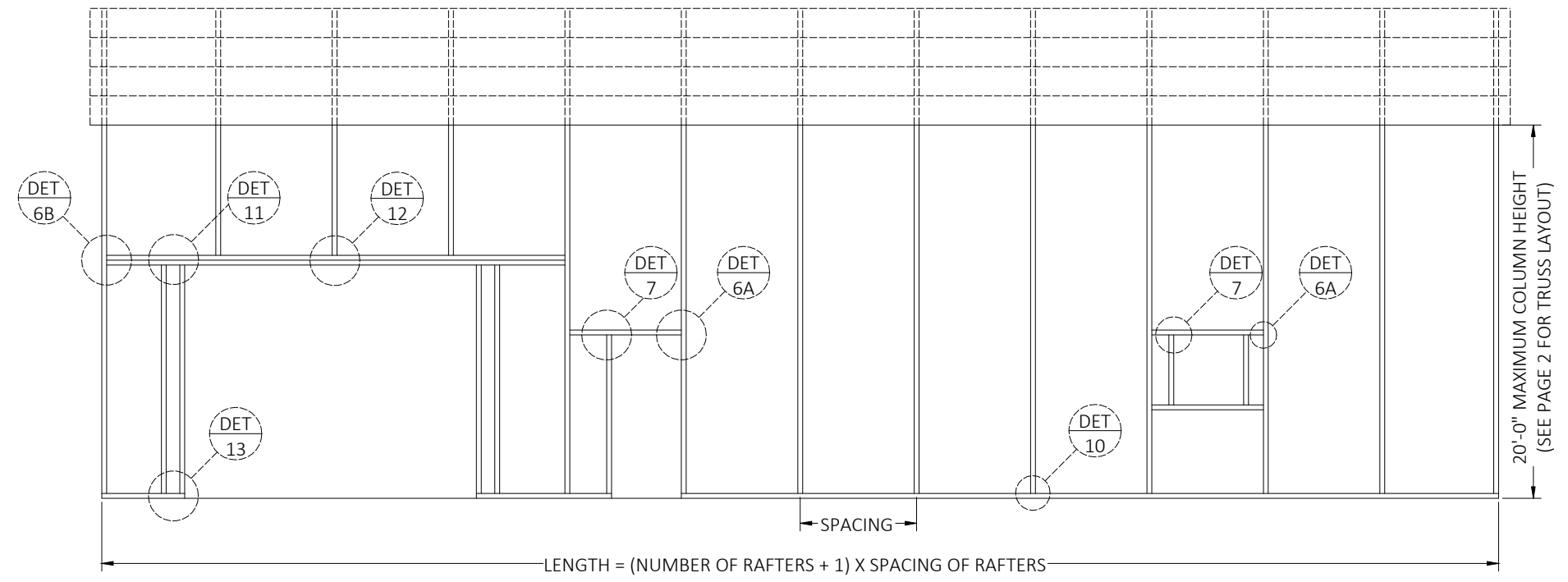
4

This item has been electronically signed and sealed by Craig E. Gunderson, P.E. on date below using a Digital Signature. Printed copies of this document are not considered signed and sealed and the signature must be verified on any electronic copies.



SPACING = 5'-0" FOR WIND SPEEDS BETWEEN 110 MPH AND 140 MPH
 SPACING = 4'-0" FOR WIND SPEEDS BETWEEN 140 MPH AND 180 MPH

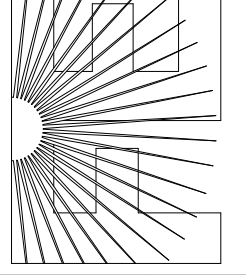
TYPICAL BOX EAVE RAFTER END WALL FRAMING SECTION



LENGTH = (NUMBER OF RAFTERS + 1) X SPACING OF RAFTERS
 SPACING = 5'-0" FOR WIND SPEEDS BETWEEN 110 MPH AND 140 MPH
 SPACING = 4'-0" FOR WIND SPEEDS BETWEEN 140 MPH AND 180 MPH

TYPICAL BOX EAVE RAFTER SIDE WALL FRAMING SECTION

FLORIDA ENGINEERING LLC
 4161 TAMiami TRAIL, UNIT 101
 PORT CHARLOTTE, FLORIDA 33952
 (941) 391-5980
 www.flengineeringllc.com



CA CERT. #30782

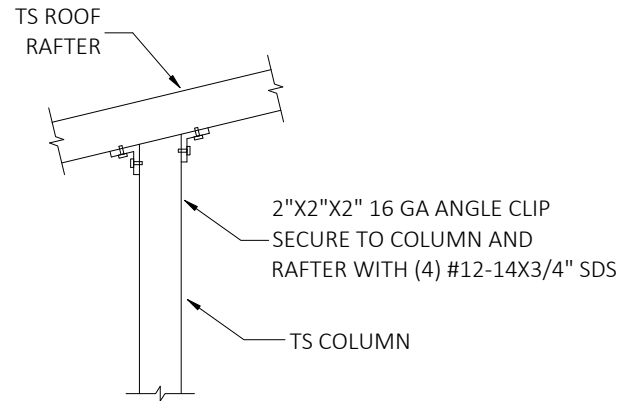
PROJECT NO. 2217229

CONTRACTOR:
ELITE METAL MANUFACTURING

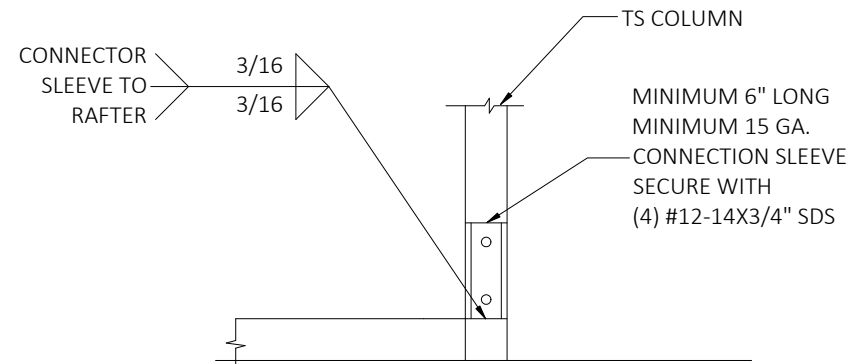
PROJECT ADDRESS:
 32'-60' PLANS
 10121 88TH TRACE,
 LIVE OAK FL 32060

DESIGN DATE:	06/24/2022
REVISION 1:	DATE
REVISION 2:	DATE
DRAWN BY:	SK
SCALE:	NTS

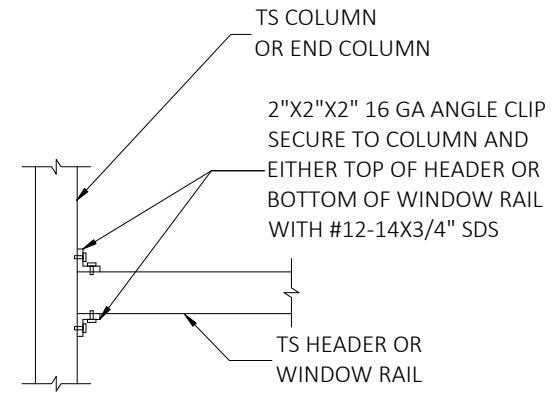
CONNECTION DETAILS



DETAIL 4
END COLUMN/RAFTER CONNECTION

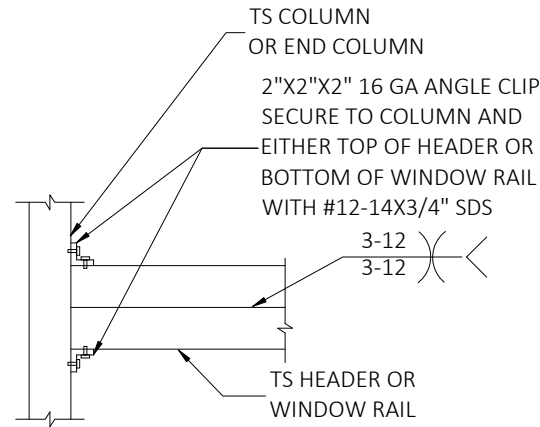


DETAIL 5
END POST/BASE RAIL CONNECTION

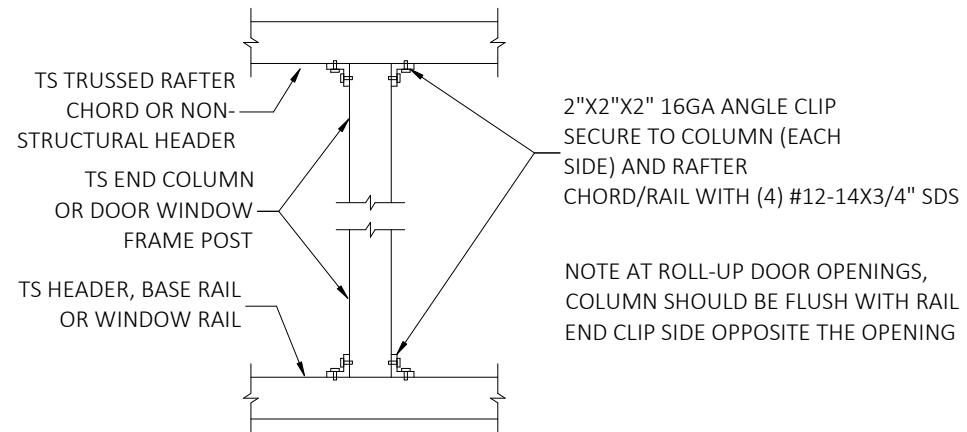


DETAIL 6A
HEADER TO COLUMN CONNECTION

This item has been electronically signed and sealed by Craig E. Gunderson, P.E. on date below using a Digital Signature. Printed copies of this document are not considered signed and sealed and the signature must be verified on any electronic copies.

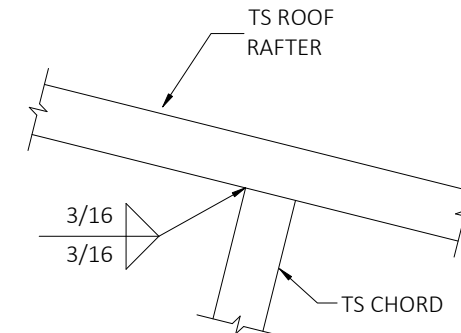


DETAIL 6B
DOUBLE HEADER TO COLUMN CONNECTION

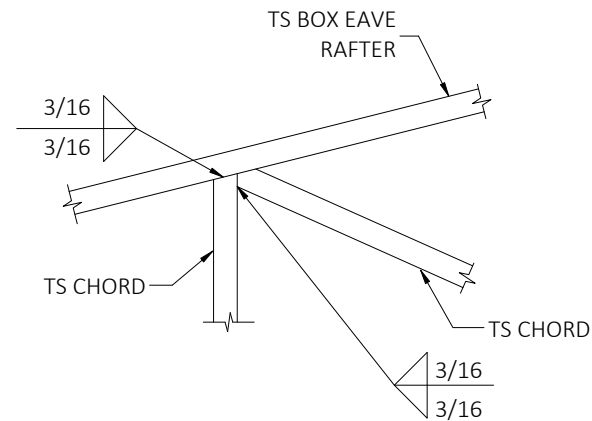


DETAIL 7
POST TO HEADER, BASE RAIL OR WINDOW RAIL CONNECTION

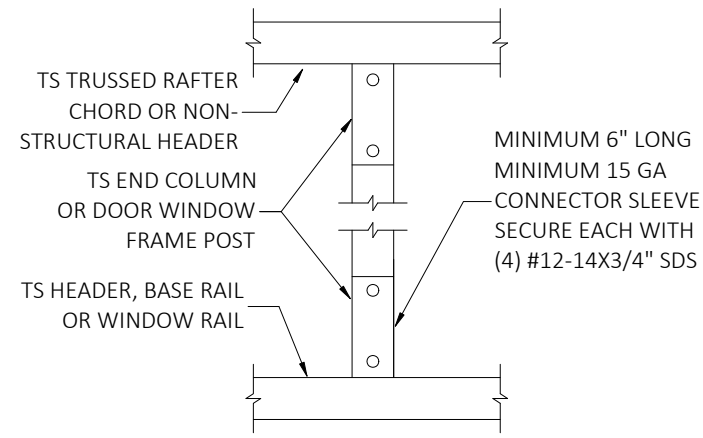
NOTE AT ROLL-UP DOOR OPENINGS, COLUMN SHOULD BE FLUSH WITH RAIL END CLIP SIDE OPPOSITE THE OPENING



DETAIL 8
RAFTER TO CHORD CONNECTION

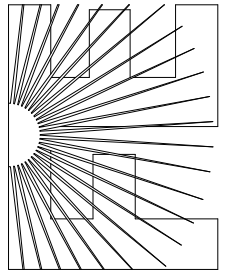


DETAIL 9
TRUSS POST AND CHORD TO RAFTER CONNECTION



DETAIL 10
POST TO HEADER, BASE RAIL CONNECTION

FLORIDA ENGINEERING LLC
4161 TAMiami TRAIL, UNIT 101
PORT CHARLOTTE, FLORIDA 33952
(941) 391-5980
www.flengineeringllc.com



CA CERT. #30782

PROJECT NO. 2217229

CONTRACTOR:
ELITE METAL MANUFACTURING

PROJECT ADDRESS:
32'-60' PLANS
10121 88TH TRACE,
LIVE OAK FL 32060

DESIGN DATE: 06/24/2022

REVISION 1: DATE

REVISION 2: DATE

DRAWN BY: SK

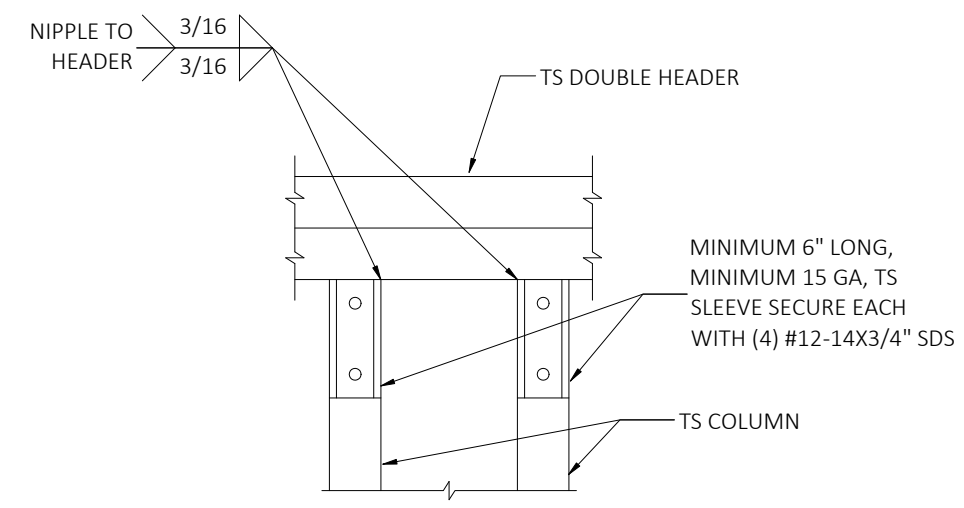
SCALE: NTS

PAGE :

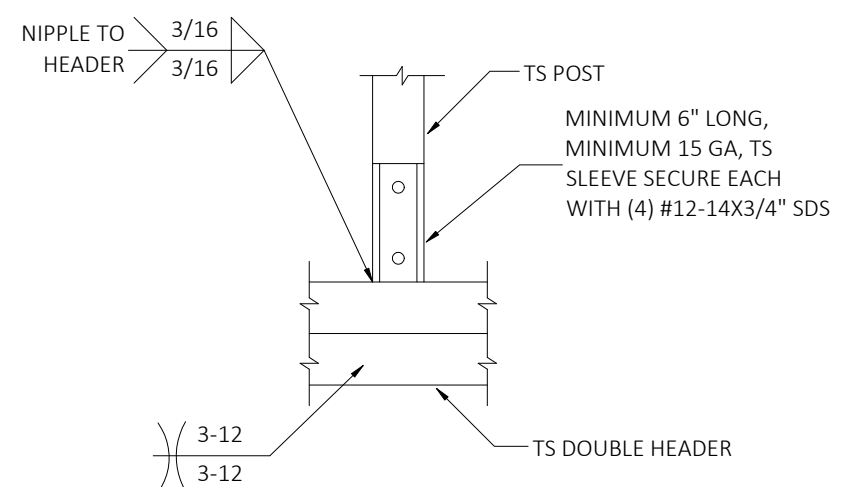
6

CONNECTION DETAILS

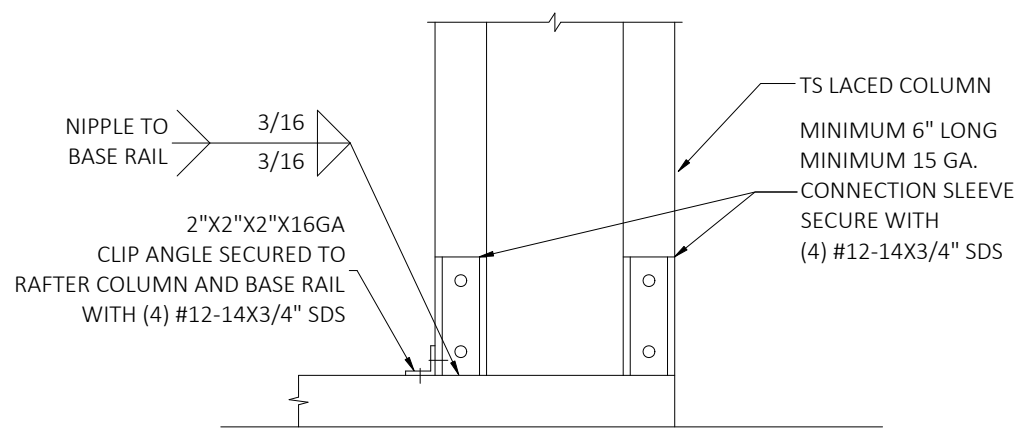
This item has been electronically signed and sealed by Craig E. Gunderson, P.E. on date below using a Digital Signature. Printed copies of this document are not considered signed and sealed and the signature must be verified on any electronic copies.



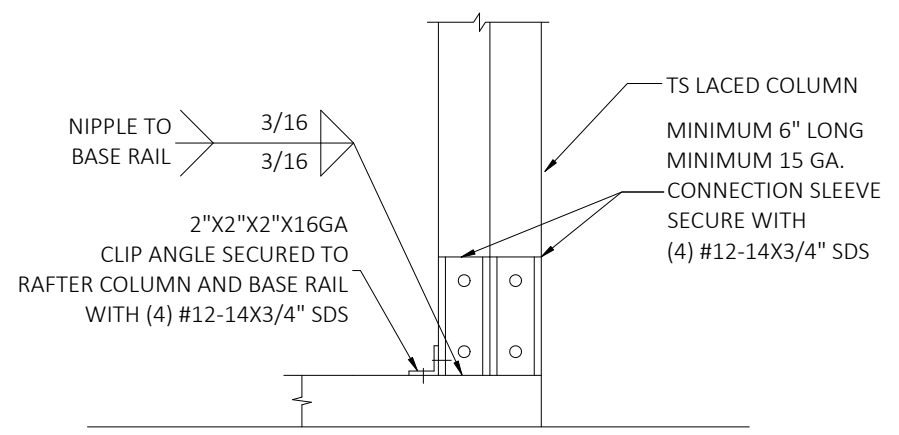
DETAIL 11
DOUBLE HEADER TO POST CONNECTION



DETAIL 12
POST/DOUBLE HEADER CONNECTION

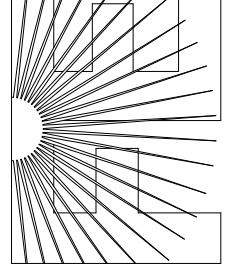


DETAIL 13A
POST/BASE RAIL CONNECTION



DETAIL 13B
POST/BASE RAIL CONNECTION

FLORIDA ENGINEERING LLC
 4161 TAMiami TRAIL, UNIT 101
 PORT CHARLOTTE, FLORIDA 33952
 (941) 391-5980
 www.flengineeringllc.com



CA CERT. #30782

PROJECT NO. 2217229

CONTRACTOR:
ELITE METAL MANUFACTURING

PROJECT ADDRESS:
 32'-60' PLANS
 10121 88TH TRACE,
 LIVE OAK FL 32060

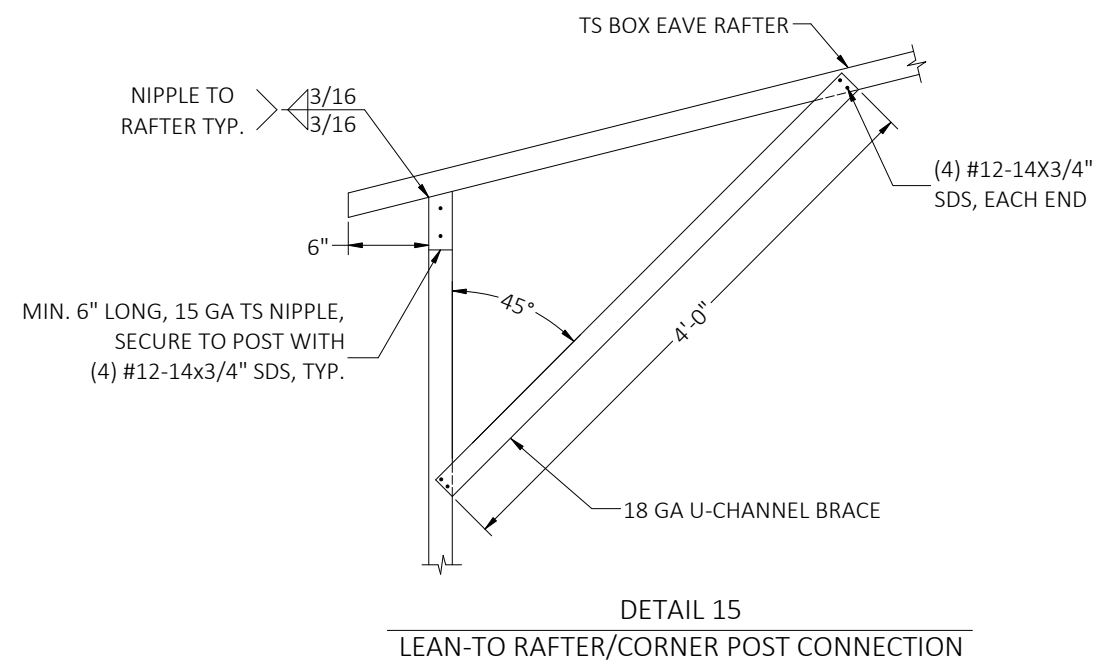
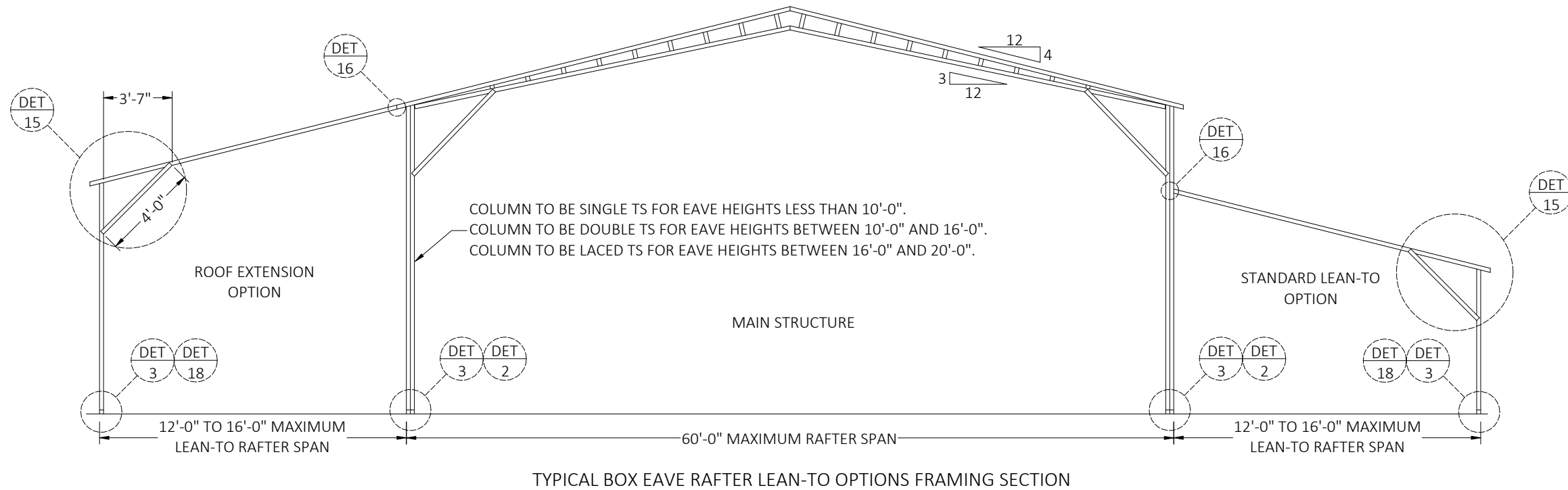
DESIGN DATE: 06/24/2022

REVISION 1: DATE

REVISION 2: DATE

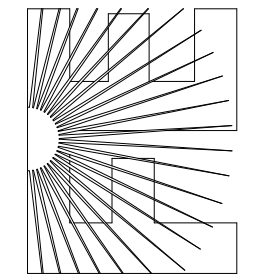
DRAWN BY: SK

SCALE: NTS



This item has been electronically signed and sealed by Craig E. Gunderson, P.E. on date below using a Digital Signature. Printed copies of this document are not considered signed and sealed and the signature must be verified on any electronic copies.

FLORIDA ENGINEERING LLC
 4161 TAMiami TRAIL, UNIT 101
 PORT CHARLOTTE, FLORIDA 33952
 (941) 391-5980
 www.flengineeringllc.com

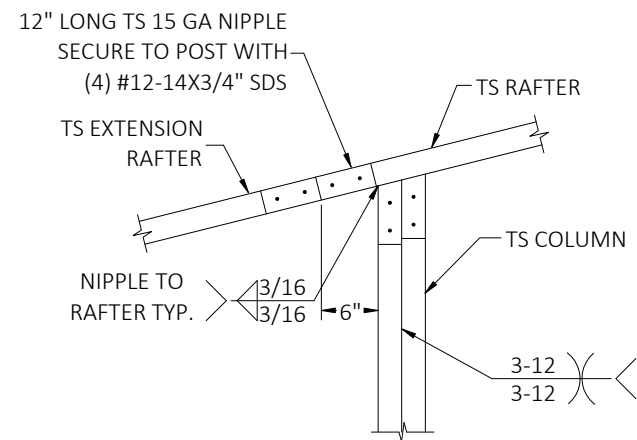


PROJECT NO. 2217229
 CA CERT. #30782

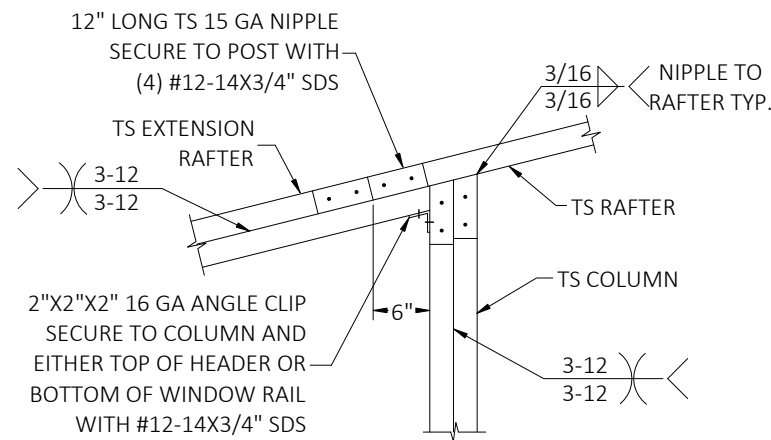
CONTRACTOR:
ELITE METAL MANUFACTURING
 PROJECT ADDRESS:
 32'-60' PLANS
 10121 88TH TRACE,
 LIVE OAK FL 32060

DESIGN DATE:	06/24/2022
REVISION 1:	DATE
REVISION 2:	DATE
DRAWN BY:	SK
SCALE:	NTS
PAGE : 8	

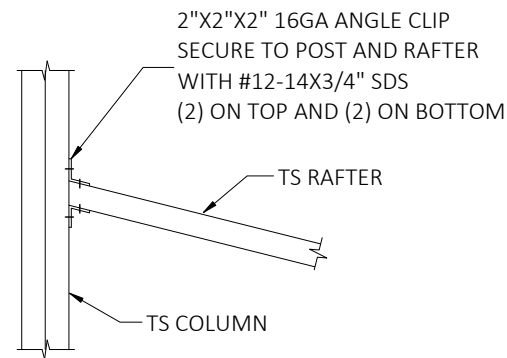
CONNECTION DETAILS



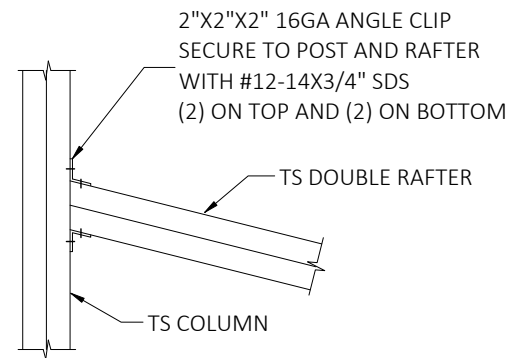
DETAIL 16A
SIDE EXTENSION RAFTER/COLUMN CONNECTION
FOR RAFTER SPANS LESS THAN 12'-0"



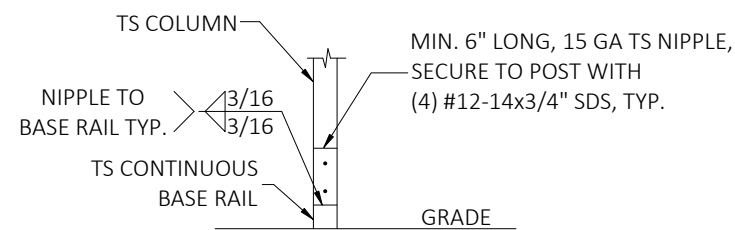
DETAIL 16B
SIDE EXTENSION RAFTER/COLUMN CONNECTION
FOR RAFTER SPANS BETWEEN 12'-0" AND 16'-0"



DETAIL 17A
LEAN TO RAFTER/COLUMN CONNECTION
FOR RAFTER SPANS LESS THAN 12'-0"



DETAIL 17B
LEAN TO RAFTER/COLUMN CONNECTION
FOR RAFTER SPANS BETWEEN 12'-0" AND 16'-0"

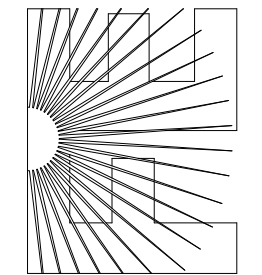


DETAIL 18
LEAN-TO POST CONNECTION

COLUMN TO BE SINGLE TS FOR EAVE HEIGHTS LESS THAN 10'-0".
COLUMN TO BE DOUBLE TS FOR EAVE HEIGHTS BETWEEN 10'-0" AND 16'-0".
COLUMN TO BE LACED TS FOR EAVE HEIGHTS BETWEEN 16'-0" AND 20'-0".

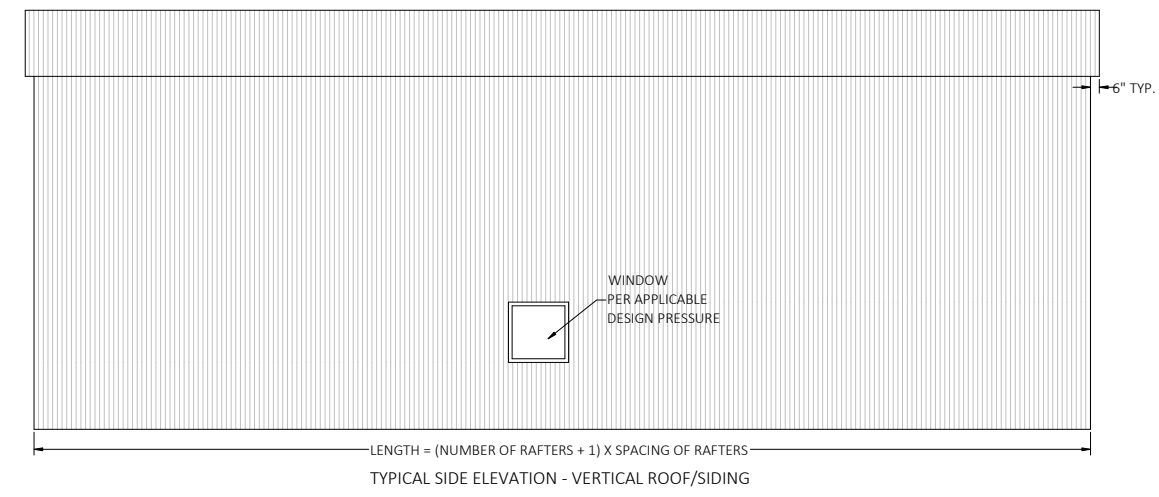
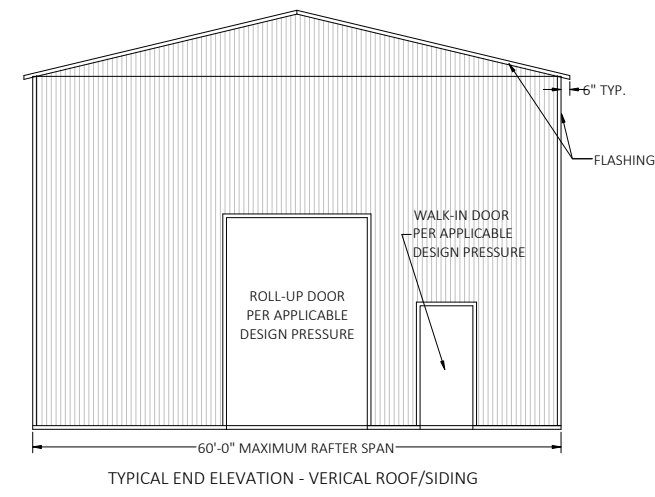
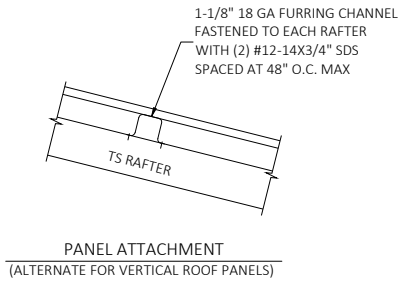
This item has been electronically signed and sealed by Craig E. Gunderson, P.E. on date below using a Digital Signature. Printed copies of this document are not considered signed and sealed and the signature must be verified on any electronic copies.

FLORIDA ENGINEERING LLC
4161 TAMiami TRAIL, UNIT 101
PORT CHARLOTTE, FLORIDA 33952
(941) 391-5980
www.flengineeringllc.com



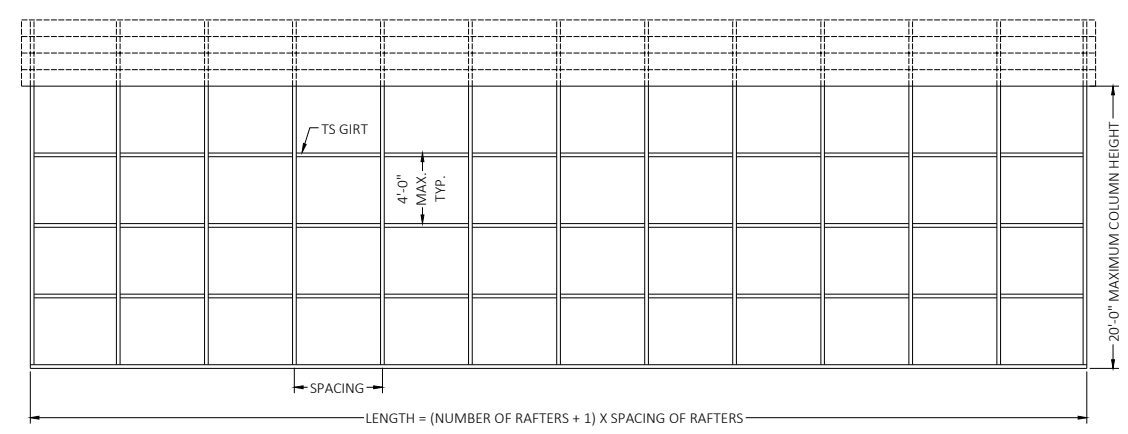
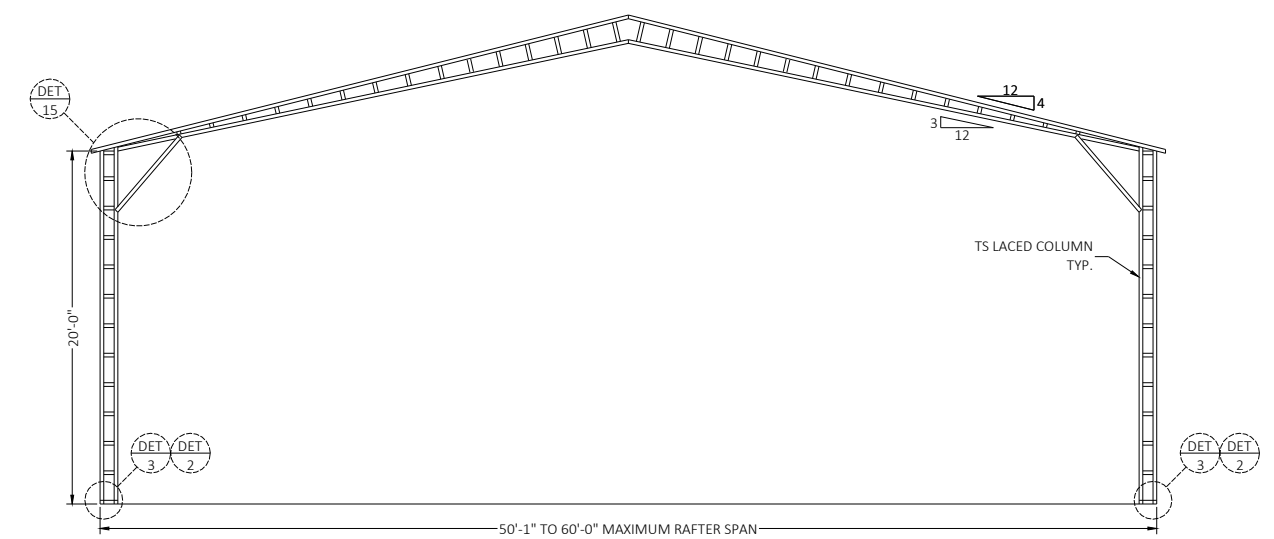
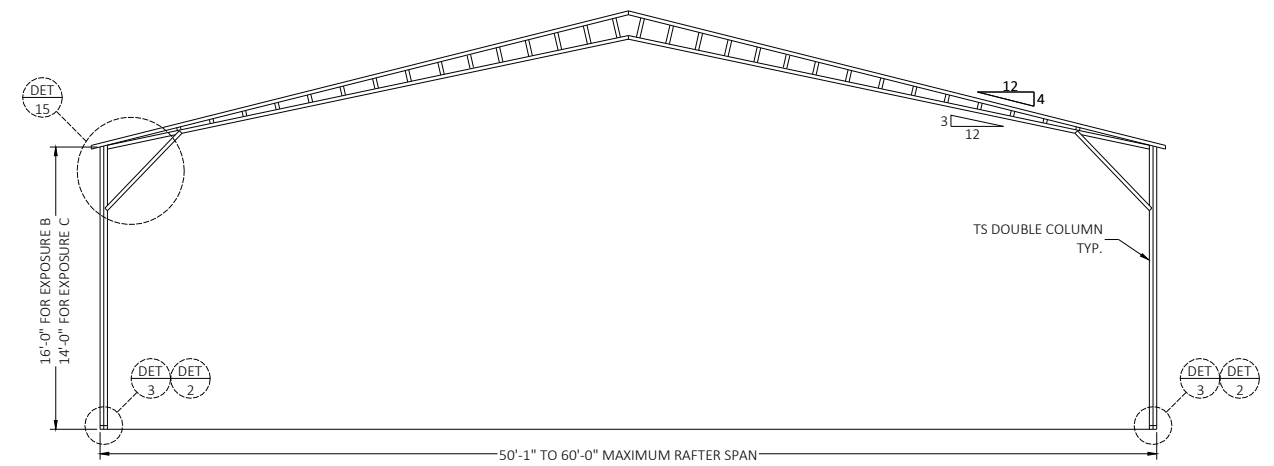
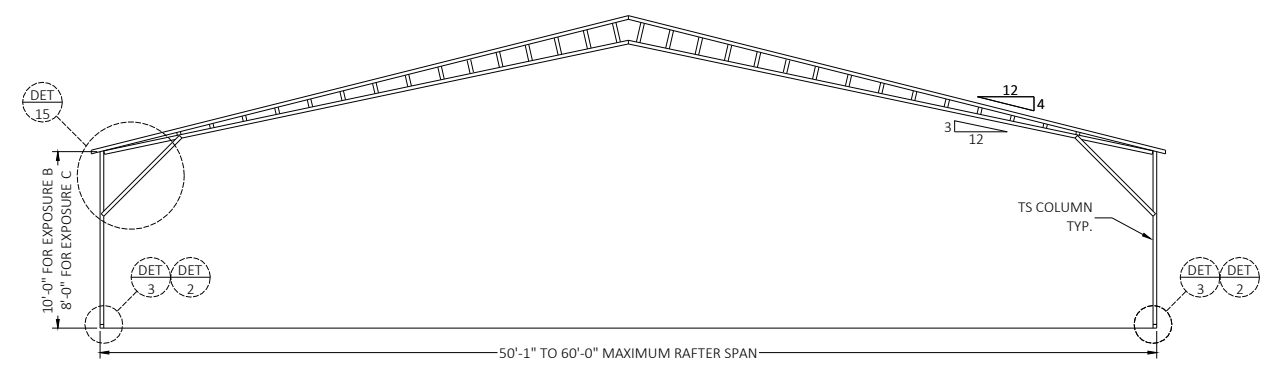
PROJECT NO. 2217229
CA CERT. #30782

CONTRACTOR: ELITE METAL MANUFACTURING		PROJECT ADDRESS: 32'-60' PLANS 10121 88TH TRACE, LIVE OAK FL 32060
DESIGN DATE:	06/24/2022	
REVISION 1:	DATE	
REVISION 2:	DATE	PAGE :
DRAWN BY:	SK	9
SCALE:	NTS	



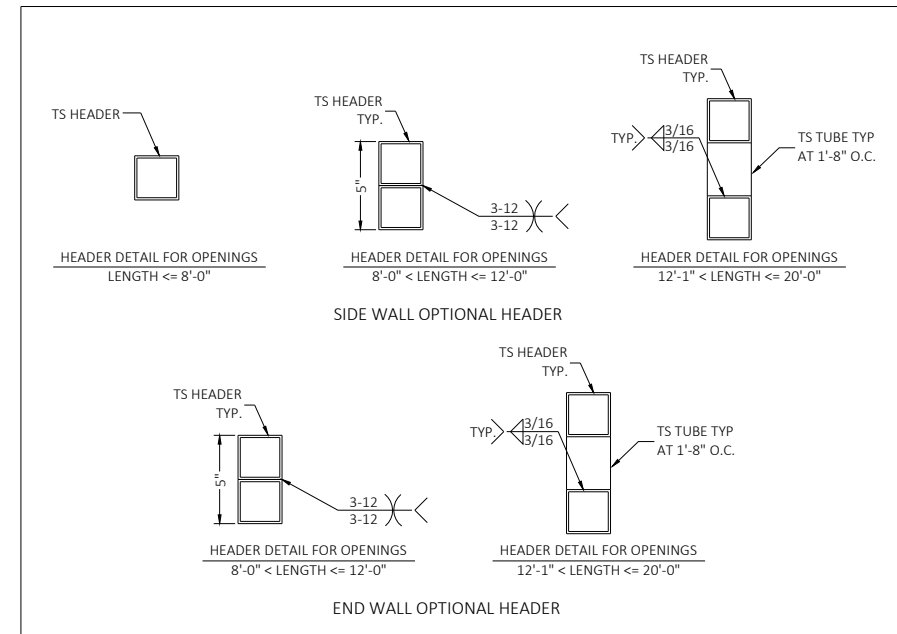
This item has been electronically signed and sealed by Craig E. Gunderson, P.E. on date below using a Digital Signature. Printed copies of this document are not considered signed and sealed and the signature must be verified on any electronic copies.

BOX EAVE FRAME RAFTER ENCLOSED BUILDING

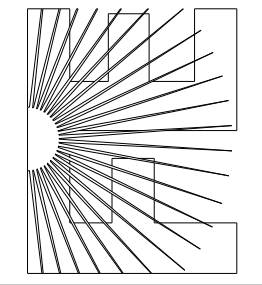


SPACING = 5'-0" FOR WIND SPEEDS BETWEEN 110 MPH AND 140 MPH
SPACING = 4'-0" FOR WIND SPEEDS BETWEEN 140 MPH AND 170 MPH
1-1/8" 18 GA HAT CHANNELS CAN BE USED IN LIEU OF TS FOR GIRTS.

TYPICAL RAFTER/POST SIDE FRAME SECTION



FLORIDA ENGINEERING LLC
4161 TAMiami TRAIL, UNIT 101
PORT CHARLOTTE, FLORIDA 33952
(941) 391-5980
www.flengineeringllc.com



CA CERT. #30782

PROJECT NO. 2217229

CONTRACTOR:
ELITE METAL
MANUFACTURING

PROJECT ADDRESS:
32'-60' PLANS
10121 88TH TRACE,
LIVE OAK FL 32060

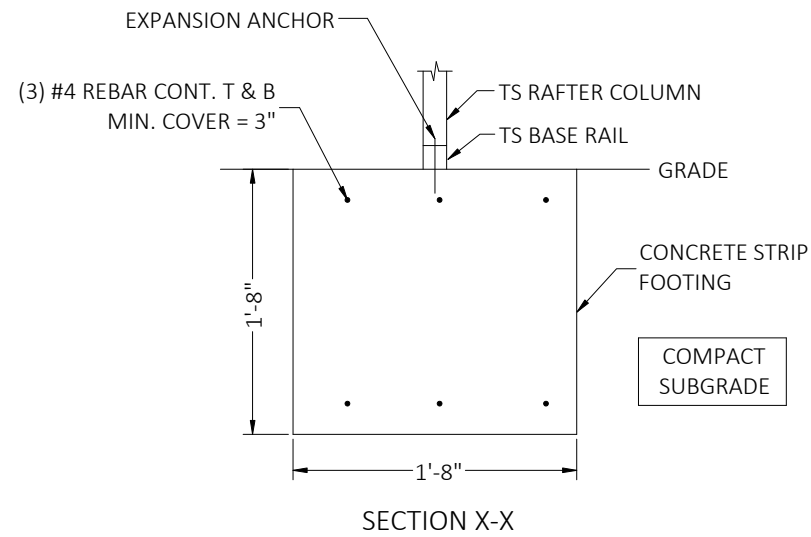
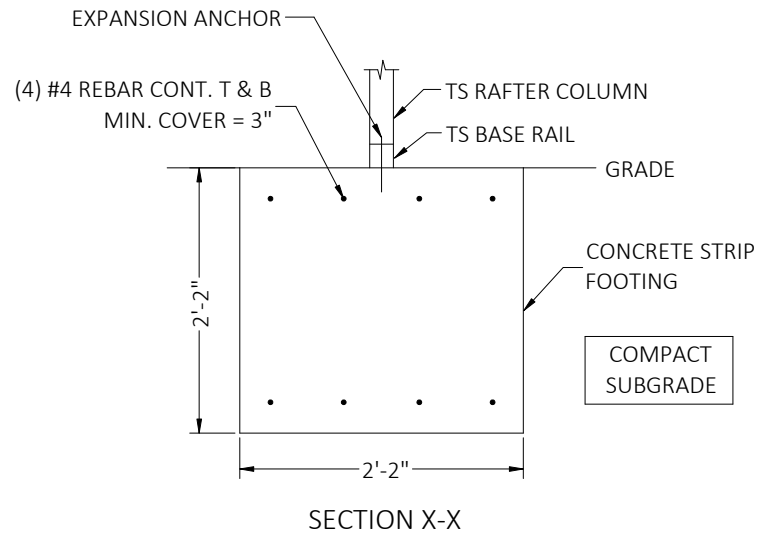
DESIGN DATE:	06/24/2022	
REVISION 1:	DATE	
REVISION 2:	DATE	PAGE :
DRAWN BY:	SK	10
SCALE:	NTS	

GENERAL NOTES
 CONCRETE MONOLITHIC SLAB DESIGN IS BASED ON A MINIMUM SOIL BEARING CAPACITY OF 1500 PSF.

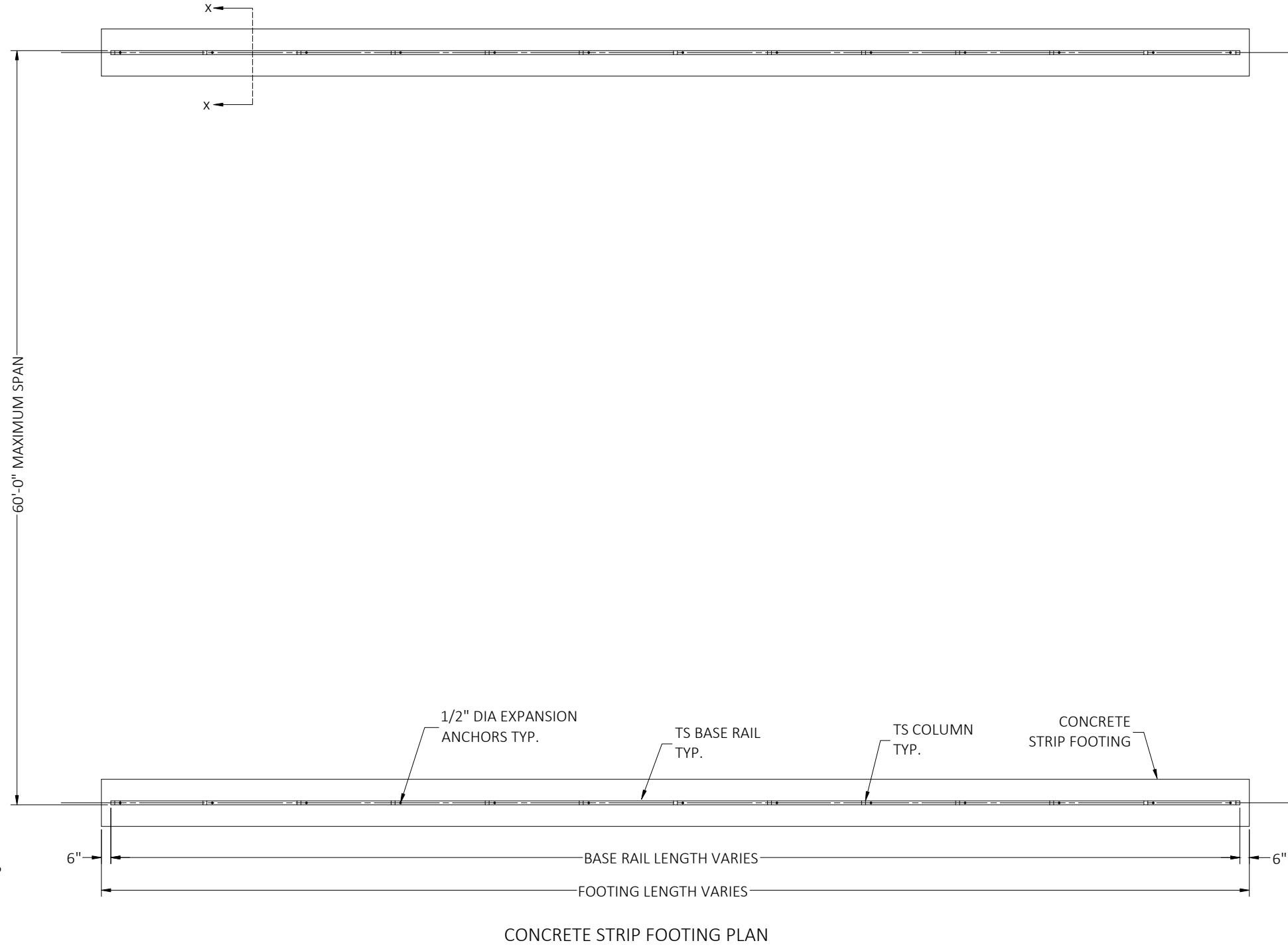
CONCRETE
 MINIMUM 28-DAY SPECIFIED COMPRESSIVE STRENGTH = 3000 PSI

- REINFORCING STEEL**
1. TURNDOWN REINFORCING STEEL = ASTM A615 GRADE 60
 2. SLAB REINFORCEMENT = WELDED WIRE FABRIC PER ASTM A185 OR FIBERGLASS FIBER REINFORCEMENT
 3. REINFORCING STEEL COVER = 3" WHERE CASE AGAINST AND PERMANENTLY EXPOSED TO SOIL OR WATER, 1.5" EVERYWHERE ELSE.
 4. REINFORCEMENT IS BENT COLD.
 5. MINIMUM INSIDE DIAMETER OF BEND = (6) BAR DIAMETERS
 6. REINFORCEMENT PARTIALLY EMBEDDED IN CONCRETE SHALL NOT BE FIELD BENT.

STRIP FOOTER SIZE	
110 C - 140 C	20"X20"
ABOVE 140 C	26"X26"



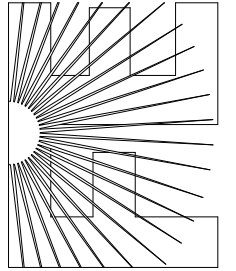
OPTIONAL CONCRETE STRIP FOOTING



60'-0" MAXIMUM SPAN

This item has been electronically signed and sealed by Craig E. Gunderson, P.E. on date below using a Digital Signature. Printed copies of this document are not considered signed and sealed and the signature must be verified on any electronic copies.

FLORIDA ENGINEERING LLC
 4161 TAMiami TRAIL, UNIT 101
 PORT CHARLOTTE, FLORIDA 33952
 (941) 391-5980
 www.flengineeringllc.com



CA CERT. #30782

PROJECT NO. 2217229

CONTRACTOR:
ELITE METAL MANUFACTURING

PROJECT ADDRESS:
 32'-60' PLANS
 10121 88TH TRACE,
 LIVE OAK FL 32060

DESIGN DATE: 06/24/2022

REVISION 1: DATE

REVISION 2: DATE PAGE :

DRAWN BY: SK

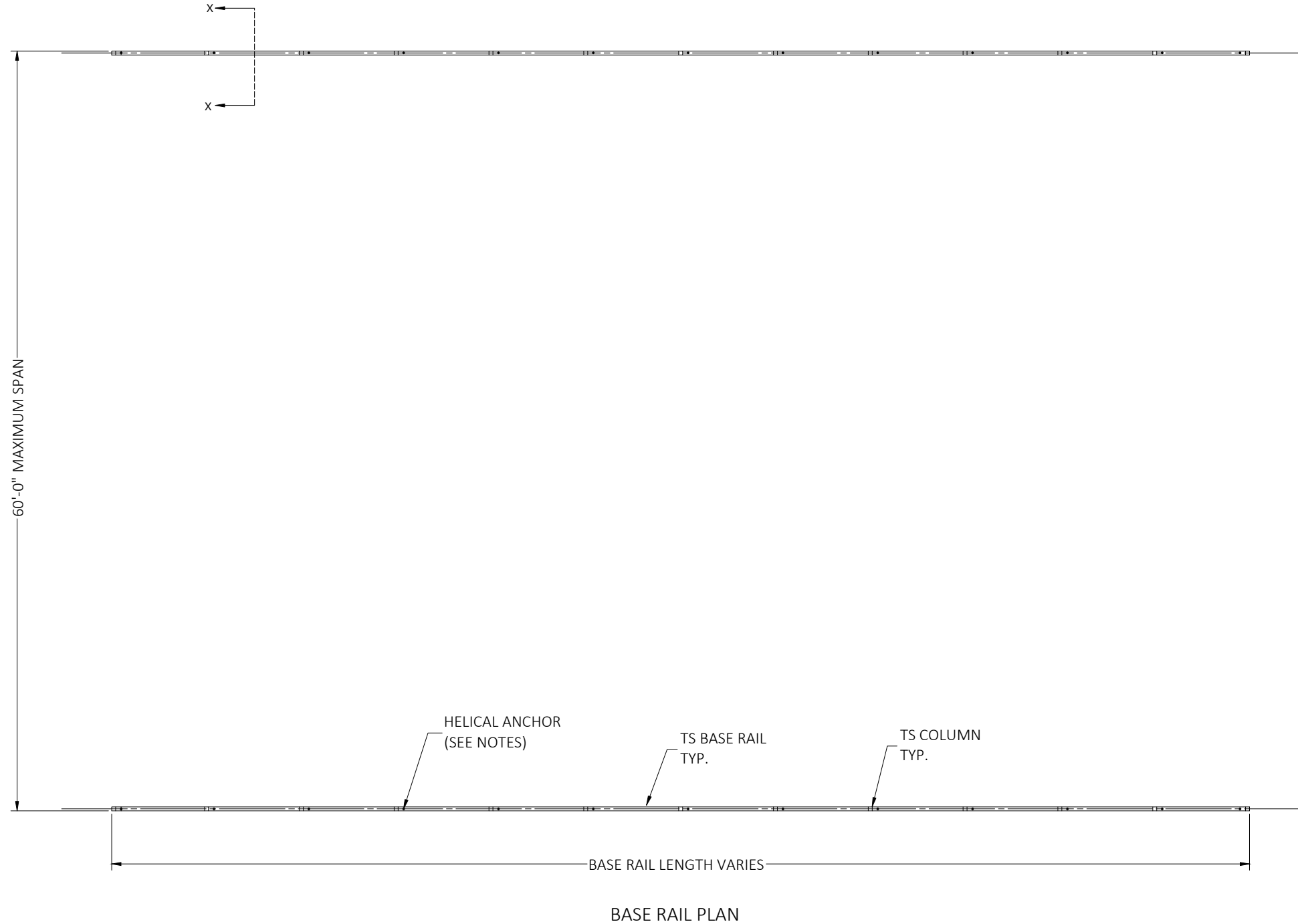
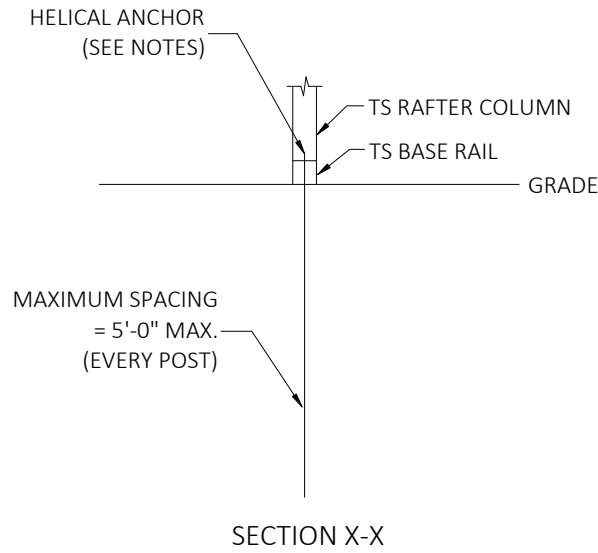
SCALE: NTS

HELIX ANCHOR NOTES

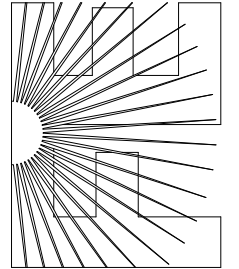
1. FOR VERY DENSE AND/OR CEMENTED SANDS, COARSE GRAVEL AND COBBLES, CALICHE, PRELOADED SILTS AND CLAYS, CORALS, MEDIUM DENSE COARSE SANDS, SANDY GRAVELS, VERY STIFF SILTS AND CLAYS, USE MINIMUM (2) 4" HELICES WITH MINIMUM 30" EMBEDMENT.
2. FOR LOOSE TO MEDIUM DENSE SANDS, FIRM TO STIFF CLAYS AND SILTS, ALLUVIAL FILL, USE MINIMUM (2) 6" HELICES WITH MINIMUM 50" EMBEDMENT.
3. FOR VERY LOOSE TO MEDIUM DENSE SANDS, FIRM TO STIFFER CLAYS AND SILTS, ALLUVIAL FILL, USE MINIMUM (2) 8" HELICES WITH MINIMUM 60" EMBEDMENT.

OPTIONAL HELICAL ANCHORING DETAIL

This item has been electronically signed and sealed by Craig E. Gunderson, P.E. on date below using a Digital Signature. Printed copies of this document are not considered signed and sealed and the signature must be verified on any electronic copies.



FLORIDA ENGINEERING LLC
 4161 TAMiami TRAIL, UNIT 101
 PORT CHARLOTTE, FLORIDA 33952
 (941) 391-5980
 www.flengineeringllc.com



CA CERT. #30782

PROJECT NO. 2217229

CONTRACTOR:
ELITE METAL MANUFACTURING

PROJECT ADDRESS:
 32'-60' PLANS
 10121 88TH TRACE,
 LIVE OAK FL 32060

DESIGN DATE: 06/24/2022

REVISION 1: DATE

REVISION 2: DATE PAGE :

DRAWN BY: SK

SCALE: NTS

12