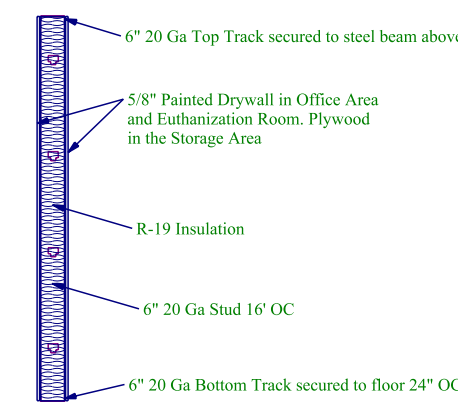
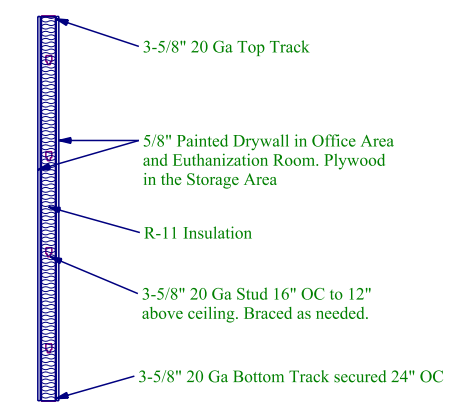


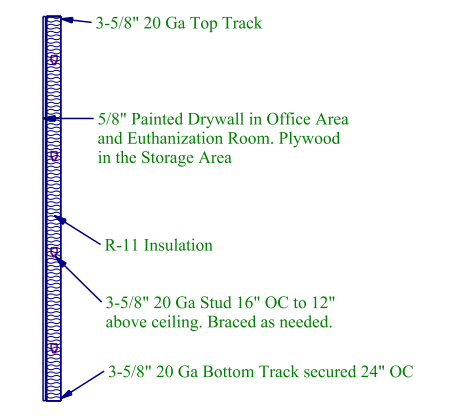
Animal Control Floor Plan
SCALE: 1/8" = 1'-0"



Wall Type 1

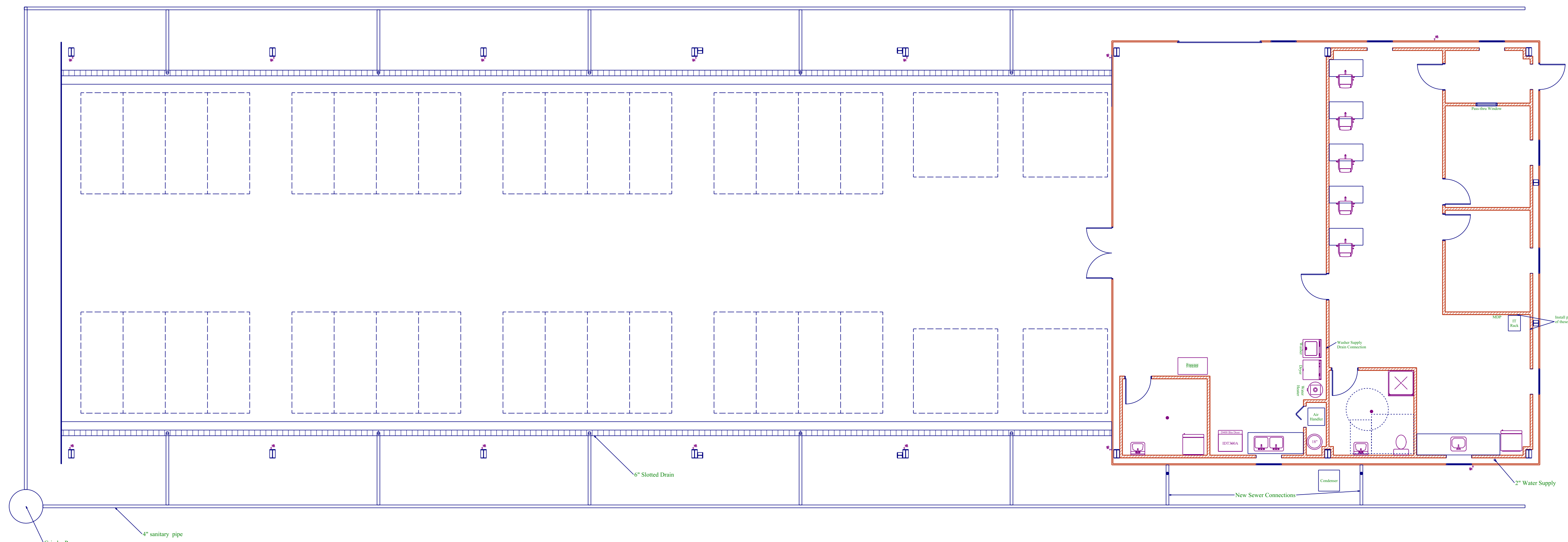


Wall Type 2



Wall Type 3

NO.	DESCRIPTION	DATE	BY
1	ISSUED FOR PERMIT		
2			
3			
4			
5			
6			
7			
8			
9			
10			



Animal Control Plumbing Plan
 SCALE: 1/8" = 1'-0"

- 6" 20 Ga Top Track secured to steel beam above
 - 5/8" Painted Drywall in Office Area and Euthanization Room. Plywood in the Storage Area
 - R-19 Insulation
 - 6" 20 Ga Stud 16" OC
 - 6" 20 Ga Bottom Track secured to floor 24" OC
- 3-5/8" 20 Ga Top Track
 - 5/8" Painted Drywall in Office Area and Euthanization Room. Plywood in the Storage Area
 - R-11 Insulation
 - 3-5/8" 20 Ga Stud 16" OC to 12" above ceiling. Braced as needed.
 - 3-5/8" 20 Ga Bottom Track secured 24" OC
- 3-5/8" 20 Ga Top Track
 - 5/8" Painted Drywall in Office Area and Euthanization Room. Plywood in the Storage Area
 - R-11 Insulation
 - 3-5/8" 20 Ga Stud 16" OC to 12" above ceiling. Braced as needed.
 - 3-5/8" 20 Ga Bottom Track secured 24" OC