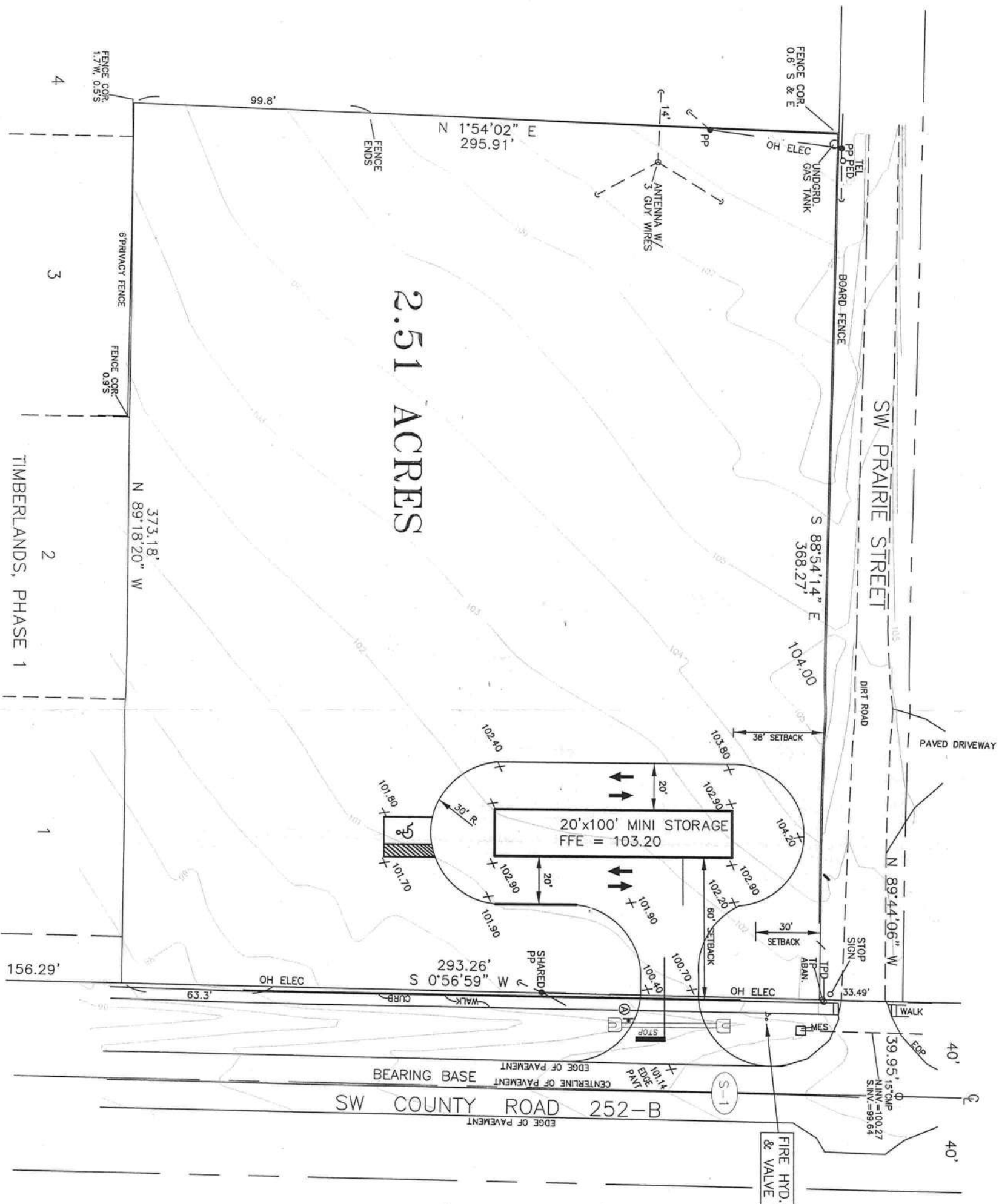
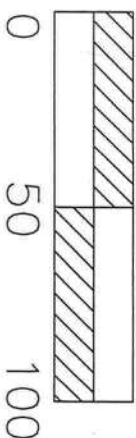


ESPENSHIP MINI STORAGE SITE PLAN



2.51 ACRES



SCALE NOTE:
PLAN VIEW: 1" = 50'

34402

- ① STOP BAR 24" WIDE x DRIVE WIDTH
 - ② SET 48" BEHIND THE BACK OF SIDEWALK WITH A 30" x 30" STOP SIGN
 - ③ 6" DOUBLE YELLOW PAINTED LANE SEPARATION STRIPING
 - ④ REQUIRED 1.5" THICK SP 9.5 ASPHALT, 6" LIME ROCK BASE LBR 100, 8" SUBGRADE LBR 40 ON ALL PAVED AREAS
 - ⑤ 48 L.F. OF 18" CORRUGATED METAL PIPE (14 GA.) WITH MITERED END SECTION PER FOOT INDEX 272
 - ⑥ FLOW LINE ELEV. NORTH=99.00/FLOW LINE ELEV. SOUTH=98.80
- GOVERNING SPECIFICATIONS:
1. ASPHALT: SECTION 300 OF THE 2013 FLORIDA DOT SPECIFICATIONS
 2. LIME ROCK: SECTION 200 OF THE 2013 FLORIDA DOT SPECIFICATIONS
 3. SODDING: SECTION 570 OF THE 2013 FLORIDA DOT SPECIFICATIONS
 4. STRIPES & MARKINGS: SECTION 710 OF THE 2013 DOT SPECIFICATIONS WITH THE EXCEPTION OF NOTES FOR PAVEMENTS - NOTE 102-1.
 5. STABILIZATION: SECTION 180 OF THE 2013 FLORIDA DOT SPECIFICATIONS
 6. EMBANKMENT: SECTION 120 OF THE 2013 FLORIDA DOT SPECIFICATIONS

OWNER: DEWILTON B. ESPENSHIP III
LOCATION: 352 SW PRAIRIE STREET
LAKE CITY, FLORIDA

KEEN ENGINEERING & SURVEYING, INC.
9263 CR 417
LAKE CITY, FLORIDA 32060
386-362-4787
ENG. LIC. EB 3761

ESPENSHIP MINI STORAGE
LAKE CITY, FLORIDA

Curtis E. Keen
Curtis E. Keen, PE #23836
Certification of Authorization #3761
DATE: 7/14/16

SITE DEVELOPMENT PLAN VIEW
MISC. NOTES, REFERENCES & INSTRUCTIONS
© 2016 KEEN ENGINEERING & SURVEYING, INC.

PROJECT No.
ESPENSHIP MINI STORAGE
SHEET No.
C-1.0
DATE
06/27/16