



DATE: 04-23-2014 11:54 AM BY: ERIC J. ALMOND, P.E.

### GENERAL NOTES

- THE CONTRACTOR SHALL VERIFY ALL EXISTING CONDITIONS AND DIMENSIONS AT THE JOB SITE TO INSURE THAT ALL NEW WORK WILL FIT IN THE MANNER INTENDED ON THE PLANS. SHOULD ANY CONDITIONS EXIST THAT ARE CONTRARY TO THOSE SHOWN ON THE PLANS, THE CONTRACTOR SHALL NOTIFY THE ENGINEER OF SUCH DIFFERENCES IMMEDIATELY AND PRIOR TO PROCEEDING WITH THE WORK.
- THE CONTRACTOR SHALL COMPLY WITH ALL CONDITIONS AS SET FORTH BY THE ISSUED SUWANNEE RIVER WATER MANAGEMENT DISTRICT ENVIRONMENTAL RESOURCE PERMIT AND ARMY CORP OF ENGINEERS PERMIT.
- THE CONTRACTOR SHALL MAINTAIN THE CONSTRUCTION SITE IN A SECURE MANNER. ALL OPEN TRENCHES AND EXCAVATED AREAS SHALL BE PROTECTED FROM ACCESS BY THE GENERAL PUBLIC.
- ANY PUBLIC LAND CORNER WITHIN THE LIMITS OF CONSTRUCTION SHALL BE PROTECTED. IF A CORNER MONUMENT IS IN DANGER OF BEING DESTROYED AND HAS NOT BEEN PROPERLY REFERENCED, THE CONTRACTOR SHOULD NOTIFY THE ENGINEER.
- THE SITE IS LOCATED IN SECTION 36, TOWNSHIP 1 NORTH, RANGE 16 EAST, COLUMBIA COUNTY, FLORIDA.
- THE CONTRACTOR SHALL IMPLEMENT ALL COMPONENTS OF THE EROSION AND SEDIMENTATION CONTROL PLAN PRIOR TO ANY EARTH DISTURBING ACTIVITIES. ALL COMPONENTS SHALL BE MAINTAINED BY THE CONTRACTOR UNTIL ALL VEGETATION IS ESTABLISHED, THE ENTIRE PROJECT AREA IS STABILIZED AND THE OWNER HAS ACCEPTED OPERATION AND MAINTENANCE.
- THE STORMWATER BASIN IS DESIGNED IN ACCORDANCE WITH CHAPTER 40B-4 F.A.C.
- ALL SLOPES OF THE STORMWATER BASIN SHALL BE SODDED. ALL SLOPES STEEPER THAN 3:1 SHALL BE STAPLED SOD.
- ALL DISTURBED AREAS NOT SODDED SHALL BE SEEDED WITH A MIXTURE OF LONG-TERM VEGETATION AND QUICK GROWING SHORT-TERM VEGETATION FOR THE FOLLOWING CONDITIONS. FOR THE MONTHS FROM SEPTEMBER THROUGH MARCH, THE MIX SHALL CONSIST OF 70 POUNDS PER ACRE OF LONG-TERM SEED AND 20 POUNDS PER ACRE OF WINTER RYE. FOR THE MONTHS OF APRIL THROUGH AUGUST, THE MIX SHALL CONSIST OF 70 PER ACRE OF LONG-TERM SEED AND 20 POUNDS PER ACRE OF MILLET.
- EXISTING DRAINAGE STRUCTURES WITHIN THE CONSTRUCTION LIMITS SHALL BE REMOVED.
- THE LOCATION OF THE UTILITIES SHOWN IN THE PLANS ARE APPROXIMATE ONLY. THE EXACT LOCATION SHALL BE DETERMINED BY THE CONTRACTOR DURING CONSTRUCTION. CONTRACTOR SHALL PROTECT ALL UTILITIES WITHIN THE PROJECT AREAS.
- THE CONTRACTOR SHALL WASTE ALL EXCESS EARTH ON SITE AS DIRECTED BY THE ENGINEER.
- ALL SITE CONSTRUCTION SHALL BE IN ACCORDANCE WITH THE COLUMBIA COUNTY LAND DEVELOPMENT REGULATIONS.
- CONTRACTOR SHALL COORDINATE ALL WORK WITH OTHER CONTRACTORS WITHIN PROJECT AREA.
- CONTRACTOR SHALL PROVIDE ACTUAL INVERT ELEVATIONS ON ALL DRAINAGE STRUCTURES, INCLUDING CULVERTS, PRIOR TO PLACING ANY BASE MATERIAL. DEVIATIONS FROM THE PLANS SHALL BE APPROVED BY THE ENGINEER BEFORE CONTINUING WORK.
- THIS PROJECT IS TO BE CONSTRUCTED IN ACCORDANCE WITH THE F.D.O.T. STANDARD SPECIFICATIONS FOR ROAD AND BRIDGE CONSTRUCTION (CURRENT EDITION) AND THE F.D.O.T. DESIGN STANDARDS (CURRENT EDITION), AND THE COLUMBIA COUNTY DEVELOPMENT STANDARDS UNLESS OTHERWISE NOTED.

- THIS PROJECT IS TO BE CONSTRUCTED IN ACCORDANCE WITH THE SPECIFICATIONS PREPARED BY NORTH FLORIDA PROFESSIONAL SERVICES, INC., MARCH 2014.
- IF UNSUITABLE MATERIAL IS ENCOUNTERED DURING GRADING, CONTRACTOR SHALL REMOVE UNSUITABLE MATERIAL TO A DEPTH OF 2" BELOW FINISHED GRADE WITHIN THE CONSTRUCTION LIMITS.
- THE CONTRACTOR SHALL NOTIFY THE COUNTY AT LEAST 48 HOURS PRIOR TO BEGINNING OF CONSTRUCTION.
- THE CONTRACTOR SHALL SUBMIT A NOTICE OF CONSTRUCTION COMMENCEMENT TO THE WATER MANAGEMENT DISTRICT AT LEAST 48 HOURS PRIOR TO THE BEGINNING OF CONSTRUCTION.
- NO WORK SHALL BE PERFORMED ON SATURDAY, SUNDAY OR HOLIDAY (SEE BID DOCUMENTS) WITHOUT WRITTEN NOTIFICATION TO THE COUNTY AND COUNTY ENGINEER.
- CONTRACTOR SHALL PROVIDE AN AS-BUILT SURVEY MEETING THE REQUIREMENTS OF CHAPTER 91G17 F.A.C. FOR THE STORMWATER MANAGEMENT SYSTEMS. INCLUDE HORIZONTAL AND VERTICAL DIMENSIONAL DATA SO THAT IMPROVEMENTS ARE LOCATED AND DELINEATED RELATIVE TO THE BOUNDARY. PROVIDE SUFFICIENT DETAILED DATA TO DETERMINE WHETHER THE IMPROVEMENTS WERE CONSTRUCTED IN ACCORDANCE WITH THE PLANS. SUBMIT THE SURVEY TO THE ENGINEER ON REPRODUCIBLE 20LB. VELLUM. A COPY OF THE AS-BUILT PLANS (IN PAPER AND DIGITAL AUTOCAD FORMAT) MUST BE SUBMITTED TO THE ENGINEER.
- THE CONTRACTOR SHALL SUBMIT A NATIONAL POLLUTANT DISCHARGE ELIMINATION SYSTEM NOTICE OF INTENT ALONG WITH SUPPORTING DOCUMENTATION TO THE FLORIDA DEPARTMENT OF ENVIRONMENTAL PROTECTION AT LEAST 48 HOURS PRIOR TO BEGINNING OF CONSTRUCTION. THE CONTRACTOR SHALL BE RESPONSIBLE FOR ALL PERMIT FEES.
- IF DURING CONSTRUCTION OR OPERATION OF THE STORM WATER MANAGEMENT SYSTEM, A STRUCTURAL FAILURE IS OBSERVED THAT HAS THE POTENTIAL TO CAUSE THE DIRECT DISCHARGE OF SURFACE WATER INTO THE FLORIDIAN AQUIFER SYSTEM, CORRECTIVE ACTIONS DESIGNED OR APPROVED BY A REGISTERED PROFESSIONAL SHALL BE TAKEN AS SOON AS PRACTICAL TO CORRECT THE FAILURE. A REPORT PREPARED BY A REGISTERED PROFESSIONAL MUST BE PROVIDED AS SOON AS PRACTICAL TO THE DEPARTMENT FOR REVIEW AND APPROVAL THAT PROVIDES REASONABLE ASSURANCE THAT THE BREACH WILL BE PERMANENTLY CORRECTED.

### ROADWAY CONSTRUCTION REQUIREMENTS

- THE ROADWAY CONSTRUCTION PLANS MUST BE REVIEWED AND APPROVED PRIOR TO COMMENCING CONSTRUCTION.
- ALL MATERIALS AND CONSTRUCTION SHALL CONFORM TO THE REQUIREMENTS OF THE FLORIDA DEPARTMENT OF TRANSPORTATION STANDARD SPECIFICATION FOR ROAD AND BRIDGE CONSTRUCTION.
- A TESTING LABORATORY RETAINED BY THE CONTRACTOR SHALL CERTIFY THE MATERIALS AND CONSTRUCTION. COPIES OF ALL TEST RESULTS SHALL BE PROVIDED PRIOR TO ACCEPTANCE.
- ALL TRAFFIC CONTROL AND SAFETY ITEMS (STRIPPING, STOP BARS, REGULATORY SIGNS, ETC.) SHALL BE IN PLACE.
- THE TEMPORARY GRASS SHALL BE SUFFICIENT TO CONTROL EROSION.
- FINAL INSPECTION FOR ACCEPTANCE TO BE PERFORMED BY COUNTY ENGINEER, COUNTY PUBLIC WORKS DIRECTOR AND COUNTY COMMISSIONER (SHOULD HE/SHE DESIRE TO ATTEND).

### INSPECTION BY COUNTY REPRESENTATIVE

- COMPLETION OF CLEARING AND GRUBBING. VISUAL ONLY - NO TEST REQUIREMENTS.
- ROUGH GRADE AND DRAINAGE STRUCTURES IN PLACE. TEST RESULTS - LBR - PIPE BACKFILL DENSITY.
- SUBGRADE COMPLETE. TEST RESULTS - DENSITY.
- LIMEROCK PLACE AND FINISHED. TEST RESULTS - THICKNESS, CROSS SECTION AND DENSITY.
- ASPHALT CONCRETE IN PLACE. TEST RESULTS - THICKNESS AND DENSITY.
- SEE PROJECT MANUALS FOR FURTHER SPECIFICATIONS.
- FINAL INSPECTION.

### SYMBOLS LEGEND

<ul style="list-style-type: none"> <li>○ BENCHMARK</li> <li>□ BOX CABLE</li> <li>□ BOX ELECTRICAL</li> <li>□ BOX TRAFFIC LIGHT</li> <li>○ CATCH BASIN ROUND</li> <li>□ CATCH BASIN SQUARE</li> <li>○ CLEANOUT EXISTING</li> <li>○ CLEANOUT PROPOSED</li> <li>○ CULVERT MITERED END SECTION</li> <li>□ DITCH BLOCK</li> <li>○ DOT MARKER FOUND</li> <li>□ ELECTRICAL DISTRIBUTION SWITCH</li> <li>○ GRINDER STATION EXISTING</li> <li>□ GRINDER STATION PROPOSED</li> <li>○ HANDICAP SYMBOL</li> <li>○ HATCHHOLE SYMBOL</li> <li>○ HATCHHOLE WATER</li> <li>○ HYDRANT, FIRE EXISTING</li> <li>○ HYDRANT, FIRE PROPOSED</li> <li>○ HYDRANT, FLUSHING EXISTING</li> <li>○ HYDRANT, FLUSHING PROPOSED</li> <li>○ IRON ROD SET</li> <li>○ IRON ROD FOUND</li> <li>○ LINE, BASE</li> <li>○ LINE, CENTER</li> <li>○ LINE, PROPERTY</li> <li>○ LIFT STATION EXISTING</li> <li>□ LIFT STATION PROPOSED</li> <li>○ MANHOLE, ELECTRICAL EXISTING</li> <li>○ MANHOLE, ELECTRICAL PROPOSED</li> <li>○ MANHOLE, GAS EXISTING</li> <li>○ MANHOLE, GAS PROPOSED</li> </ul>	<ul style="list-style-type: none"> <li>○ MANHOLE SANITARY EXISTING</li> <li>○ MANHOLE SANITARY PROPOSED</li> <li>○ MANHOLE STORM EXISTING</li> <li>○ MANHOLE STORM PROPOSED</li> <li>○ MANHOLE WATER EXISTING</li> <li>○ MANHOLE WATER PROPOSED</li> <li>○ DELTA POINT EXISTING</li> <li>○ DELTA POINT PROPOSED</li> <li>○ STANDARD POINT</li> <li>○ METER, GAS EXISTING</li> <li>○ METER, GAS PROPOSED</li> <li>○ METER, SANITARY EXISTING</li> <li>○ METER, SANITARY PROPOSED</li> <li>○ METER, WATER EXISTING</li> <li>○ METER, WATER PROPOSED</li> <li>○ METER WATER STATION</li> <li>○ MONUMENT FOUND CONCRETE</li> <li>○ MONUMENT (FRM. MURNER CONCRETE</li> <li>○ MONUMENT SET CONCRETE</li> <li>○ PEDESTAL, TELEPHONE EXISTING</li> <li>○ PEDESTAL, TELEPHONE PROPOSED</li> <li>○ POLE, GUY WIRE EXISTING</li> <li>○ POLE, GUY WIRE PROPOSED</li> <li>○ POLE, LIGHT EXISTING</li> <li>○ POLE, LIGHT PROPOSED</li> <li>○ POLE, POWER EXISTING</li> <li>○ POLE, POWER PROPOSED</li> <li>○ POLE, POWER W/TRANSFORMER</li> <li>○ POLE, UTILITY</li> <li>○ POST, FIBER OPTIC WARDING</li> <li>○ SIGN, DOUBLE POST EXISTING</li> <li>○ SIGN, DOUBLE POST PROPOSED</li> <li>○ SIGN, SINGLE POST EXISTING</li> <li>○ SIGN, SINGLE POST PROPOSED</li> </ul>	<ul style="list-style-type: none"> <li>○ SOIL BEARING LOCATION</li> <li>○ TAP SANITARY SEWER EXISTING</li> <li>○ TAP SANITARY SEWER PROPOSED</li> <li>○ VALVE, AIR VENT AUTO EXISTING</li> <li>○ VALVE, AIR VENT AUTO PROPOSED</li> <li>○ VALVE, AIR VENT HAND EXISTING</li> <li>○ VALVE, AIR VENT HAND PROPOSED</li> <li>○ VALVE, BACKFLOW PREVENTER EXISTING</li> <li>○ VALVE, BACKFLOW PREVENTER PROPOSED</li> <li>○ VALVE, GAS SHUT OFF EXISTING</li> <li>○ VALVE, GAS SHUT OFF PROPOSED</li> <li>○ VALVE, GATE GAS EXISTING</li> <li>○ VALVE, GATE GAS PROPOSED</li> <li>○ VALVE, GATE WATER EXISTING</li> <li>○ VALVE, GATE WATER PROPOSED</li> <li>○ VALVE, WATER REGULATION CONTROL</li> <li>○ VALVE, SANITARY VAULT EXISTING</li> <li>○ VALVE, SANITARY VAULT PROPOSED</li> <li>○ VALVE, WATER VAULT EXISTING</li> <li>○ VALVE, WATER VAULT PROPOSED</li> <li>○ WATER STATION</li> <li>○ WATER TANK</li> <li>○ WELL</li> <li>○ WELL, MONITORING</li> <li>○ SEPTIC TANK</li> </ul>
------------------------------------------------------------------------------------------------------------------------------------------------------------------------------------------------------------------------------------------------------------------------------------------------------------------------------------------------------------------------------------------------------------------------------------------------------------------------------------------------------------------------------------------------------------------------------------------------------------------------------------------------------------------------------------------------------------------------------------------------------------------------------------------------------------------------------------------------------------------------------------------------------------------------------------------------------------------------------------------------------------------------------------------------------------	------------------------------------------------------------------------------------------------------------------------------------------------------------------------------------------------------------------------------------------------------------------------------------------------------------------------------------------------------------------------------------------------------------------------------------------------------------------------------------------------------------------------------------------------------------------------------------------------------------------------------------------------------------------------------------------------------------------------------------------------------------------------------------------------------------------------------------------------------------------------------------------------------------------------------------------------------------------------------------------------------------------------------------------------------------------------------------------------------------------------------------------------------------------------------------------------------------------------------------------------------------	--------------------------------------------------------------------------------------------------------------------------------------------------------------------------------------------------------------------------------------------------------------------------------------------------------------------------------------------------------------------------------------------------------------------------------------------------------------------------------------------------------------------------------------------------------------------------------------------------------------------------------------------------------------------------------------------------------------------------------------------------------------------------------------------------------------------------------------------------------------------------------------------------------------------------------------------------------------------------------------------

<ul style="list-style-type: none"> <li>■ ASPHALT</li> <li>■ CONCRETE</li> <li>■ GRAVEL</li> </ul>	<p>VIEW # / PAGE #</p> <p>VIEW # / PAGE #</p>	<p>TITLE MARK</p> <p>SECTION DETAIL MARK</p>
---------------------------------------------------------------------------------------------------	-----------------------------------------------	----------------------------------------------

### LINETYPE LEGEND

EXISTING	PROPOSED	FORCE MAIN
E-FM	FM	WATER
E-W	W	SANITARY
E-SAN	SAN	GAS
E-GAS	GAS	BURIED ELECTRIC
E-BE	BE	BURIED TELEPHONE
E-BT	BT	CABLE TV
E-CATV	CATV	FIBER OPTIC
E-FO	FQ	OVERHEAD UTILITIES
E-OHU	OHU	OVERHEAD ELECTRIC
E-OHE	OHE	

### MISCELLANEOUS LINETYPES

E-CMP	EXISTING CORRUGATED METAL PIPE
E-RCP	EXISTING ROUND CONCRETE PIPE
E-ECP	EXISTING ELIPTICAL CONCRETE PIPE
E-CPP	EXISTING CORRUGATED PLASTIC PIPE
X	FIELD FENCE
X	CHAIN LINK FENCE
X	WOOD POST FENCE
---	PROPERTY BOUNDARY
---	RIGHT OF WAY LINE
---	EXISTING CONTOUR
---	PROPOSED CONTOUR
V	SILT FENCE

### ABBREVIATION LEGEND

ARC LENGTH	L	POINT OF BEGINNING	PB
BENCHMARK	BM	POINT OF COMMENCEMENT	POC
CALCULATED	(C)	POINT OF CURVATURE	PC
CHORD BEARING	CH	POINT OF COMPOUND CURVATURE	PCC
CONCRETE MONUMENT	CM	POINT OF INTERSECTION	PI
CLEANOUT	CO	POINT OF REVERSE CURVATURE	PR
DEED	(D)	POINT OF TANGENT	PT
DITCH, TOP OF	TOD	PIPE, CORRUGATED METAL	CMF
DITCH, BOTTOM OF	BOD	PIPE, METAL ARC BITUMINOUS COATED	CMPA
E	E	PIPE, REINFORCED CONCRETE	RCP
EDGE OF PAVEMENT	EOP	PIPE, REINFORCED CONCRETE	RCP
ELECTRICAL	E	ELIPTICAL	EL
END VERTICAL CURVE ELEVATION	EVCE	PIPE, POLYETHYLENE	PE
END VERTICAL CURVE STATION	EVCS	PIPE, POLYETHYLENE HIGH DENSITY	PEHD
F	F	PLAT	PL
FINISH FLOOR ELEVATION	FND	PROFILE GRADE LINE	PG
GAS	G	RADIUS	R
GROUND SPOT ELEVATION	X	RANGE	RNG
IRON PIPE	IP	REBAR	RE
IRON ROD	IR	REBAR AND CAP	RBC
IRON ROD AND CAP	IRC	RECLAIMED WATER	RW
LINEAR FEET	LF	RIGHT OF WAY	ROW
LINE, BASE	LB	SANITARY SEWER	SS
LINE, CENTER	LC	SANITARY SEWER	SS
LINE, PROPERTY	LP	SEWER TAP	ST
MEASURED	M	SOUTH	S
NAIL	N	STORM SEWER	SSW
NAIL AND DIRT	NL+D	STORM WATER MANAGEMENT FACILITY	SWM F
MANHOLE	MH	TANGENT	TW
NO IDENTIFICATION	NI	TOWNSHIP	TW
NORTH	N	UNDERGROUND CABLE	UC
OFFICIAL RECORD BOOK	ORB	UNDERGROUND ELECTRIC	UE
OFFSET	OS	UNDERGROUND TELEPHONE	UT
OVERHEAD CABLE	OC	VALVE, COMBINATION AIR/VACUUM	CAV
OVERHEAD ELECTRIC	OE	WATER LINE	WL
OVERHEAD TELEPHONE	OT	WATER METER	WM
PAGE(S)	PG		
PERMANENT CONTROL POINT	PCP		



Date	Revision

AE JOB NO.: 14-03  
 DESIGN: E.J.A.  
 DRAWN: T.K.B.  
 CHECKED: E.J.A.  
 START DATE: 4-25-14  
 PLOT DATE: 6-23-2014

GENERAL NOTES

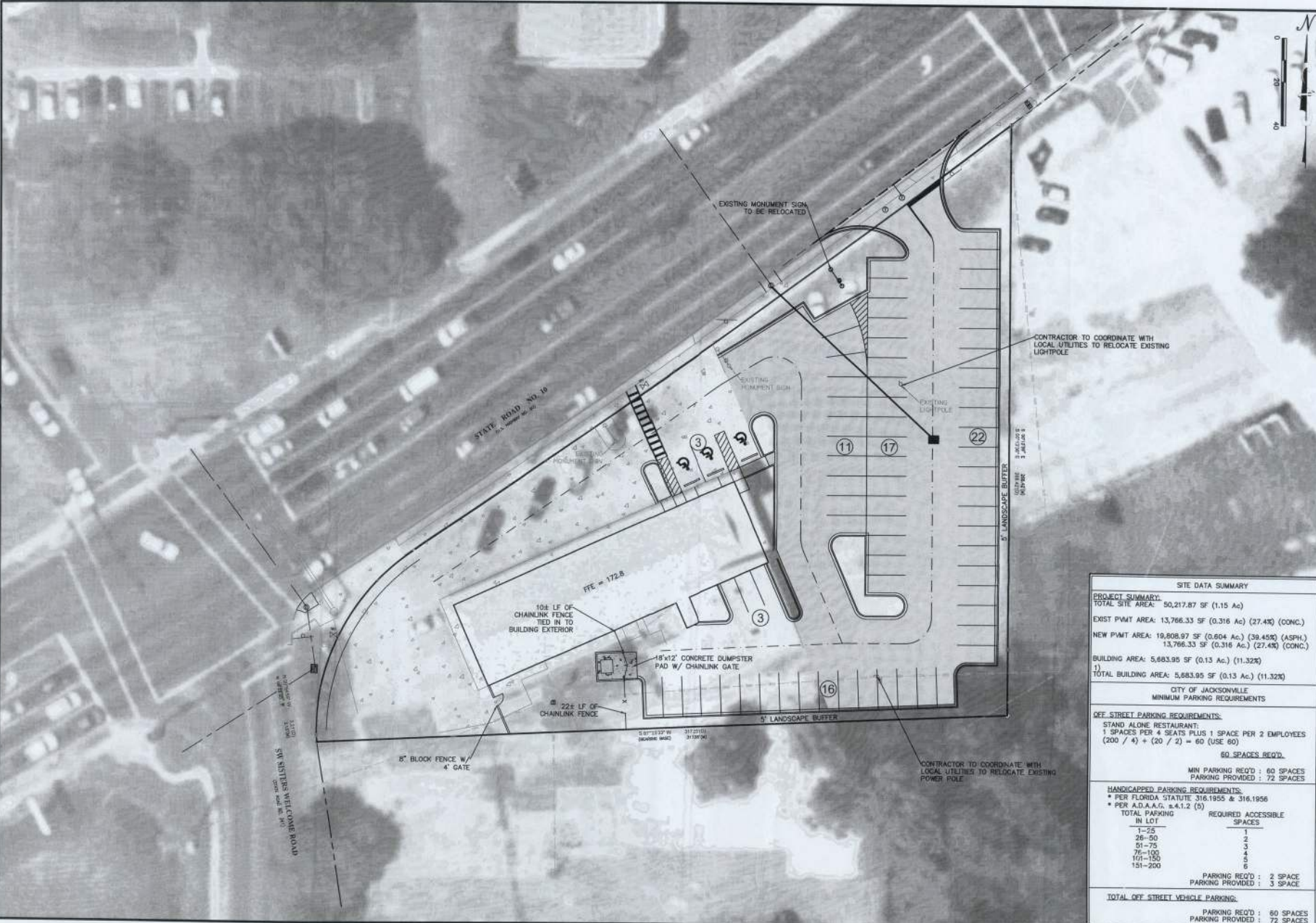
LAKE CITY PARKING & SEAFOOD RESTAURANT MODIFICATIONS

ALMOND ENGINEERING  
 CONSULTING CIVIL ENGINEERS  
 3600 HENDRICKS AVENUE, JACKSONVILLE, FL 32207  
 (904) 306-0162 PHONE (904) 306-2185 FAX



Revision: July 23, 2014, 1:00 PM - 2:00 PM, No. 14-03

Project: Professional Services - Lake City, Florida - Commercial/Industrial - Master Site Plan



Date	Revision

AE JOB NO.: 14-03  
 DESIGN: E.J.A.  
 DRAWN: T.K.B.  
 CHECKED: E.J.A.  
 START DATE: 4-25-14  
 PLOT DATE: 6-23-2014

MASTER SITE PLAN

LAKE CITY PARKING &  
SEAFOOD RESTAURANT  
MODIFICATIONS

ALMOND

ENGINEERING

CONSULTING CIVIL ENGINEERS  
 5609 HENDERSON AVENUE, JACKSONVILLE, FL 32207  
 (904) 306-0162 PHONE (904) 306-2185 FAX

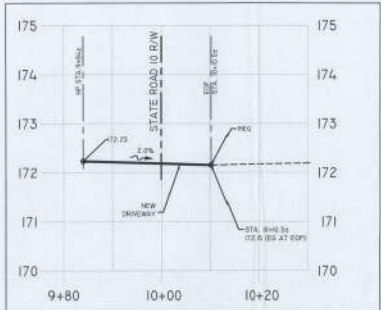
5

SITE DATA SUMMARY	
<b>PROJECT SUMMARY:</b>	
TOTAL SITE AREA:	50,217.87 SF (1.15 Ac)
EXIST PWMT AREA:	13,766.33 SF (0.316 Ac) (27.4%) (CONC.)
NEW PWMT AREA:	19,808.97 SF (0.604 Ac.) (39.45%) (ASPH.)
	13,766.33 SF (0.316 Ac.) (27.4%) (CONC.)
BUILDING AREA:	5,683.95 SF (0.13 Ac.) (11.32%)
TOTAL BUILDING AREA:	5,683.95 SF (0.13 Ac.) (11.32%)
CITY OF JACKSONVILLE MINIMUM PARKING REQUIREMENTS	
<b>OFF STREET PARKING REQUIREMENTS:</b>	
STAND ALONE RESTAURANT:	
1 SPACE PER 4 SEATS PLUS 1 SPACE PER 2 EMPLOYEES	
(200 / 4) + (20 / 2) = 60 (USE 60)	
60 SPACES REQ'D.	
MIN PARKING REQ'D : 60 SPACES	
PARKING PROVIDED : 72 SPACES	
<b>HANDICAPPED PARKING REQUIREMENTS:</b>	
* PER FLORIDA STATUTE 316.1955 & 316.1956	
* PER A.D.A.A.G. §4.1.2 (5)	
TOTAL PARKING	REQUIRED ACCESSIBLE SPACES
IN LOT	
1-25	1
26-50	2
51-75	3
76-100	4
101-150	5
151-200	6
PARKING REQ'D : 2 SPACE	
PARKING PROVIDED : 3 SPACE	
<b>TOTAL OFF STREET VEHICLE PARKING:</b>	
PARKING REQ'D : 60 SPACES	
PARKING PROVIDED : 72 SPACES	

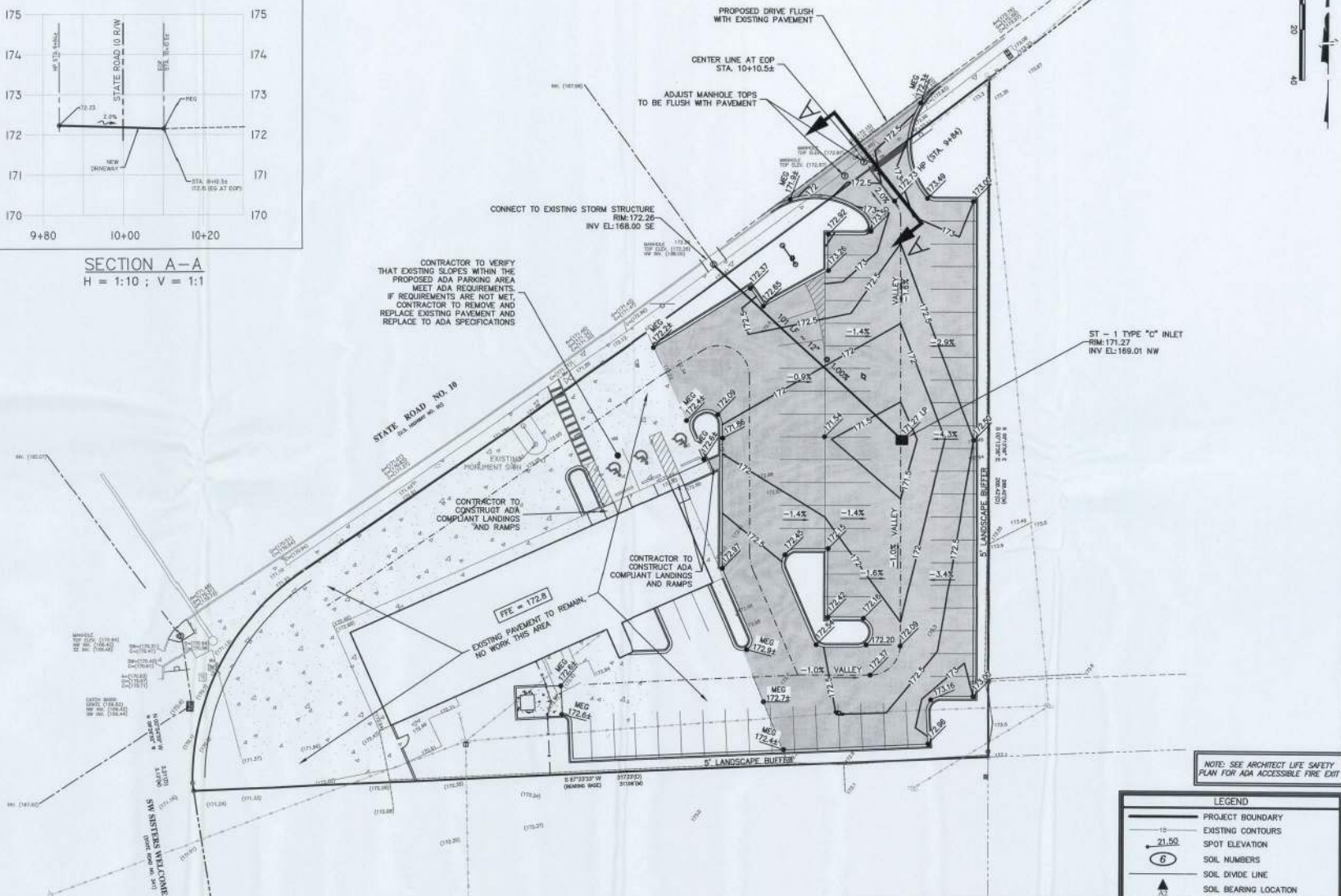


Revised: 04-21-2014 1:55pm by: msh

PL 02: 02/20/2014 10:43:03 User: EJA, Name: 02/20/2014 10:43:03



SECTION A-A  
H = 1:10 ; V = 1:1



Date	Revision

AE JOB NO: 14-03  
DESIGN: E.J.A.  
DRAWN: T.X.B.  
CHECKED: E.J.A.  
START DATE: 4-25-14  
PLOT DATE: 6-23-2014

PAVING, GRADING, AND DRAINAGE

LAKE CITY PARKING & SEAFOOD RESTAURANT MODIFICATIONS

**ALMOND**  
ENGINEERING  
CONSULTING CIVIL ENGINEERS  
3000 GUNNVILLE, FL 32820  
(904) 306-0162 PHONE (904) 306-2185 FAX

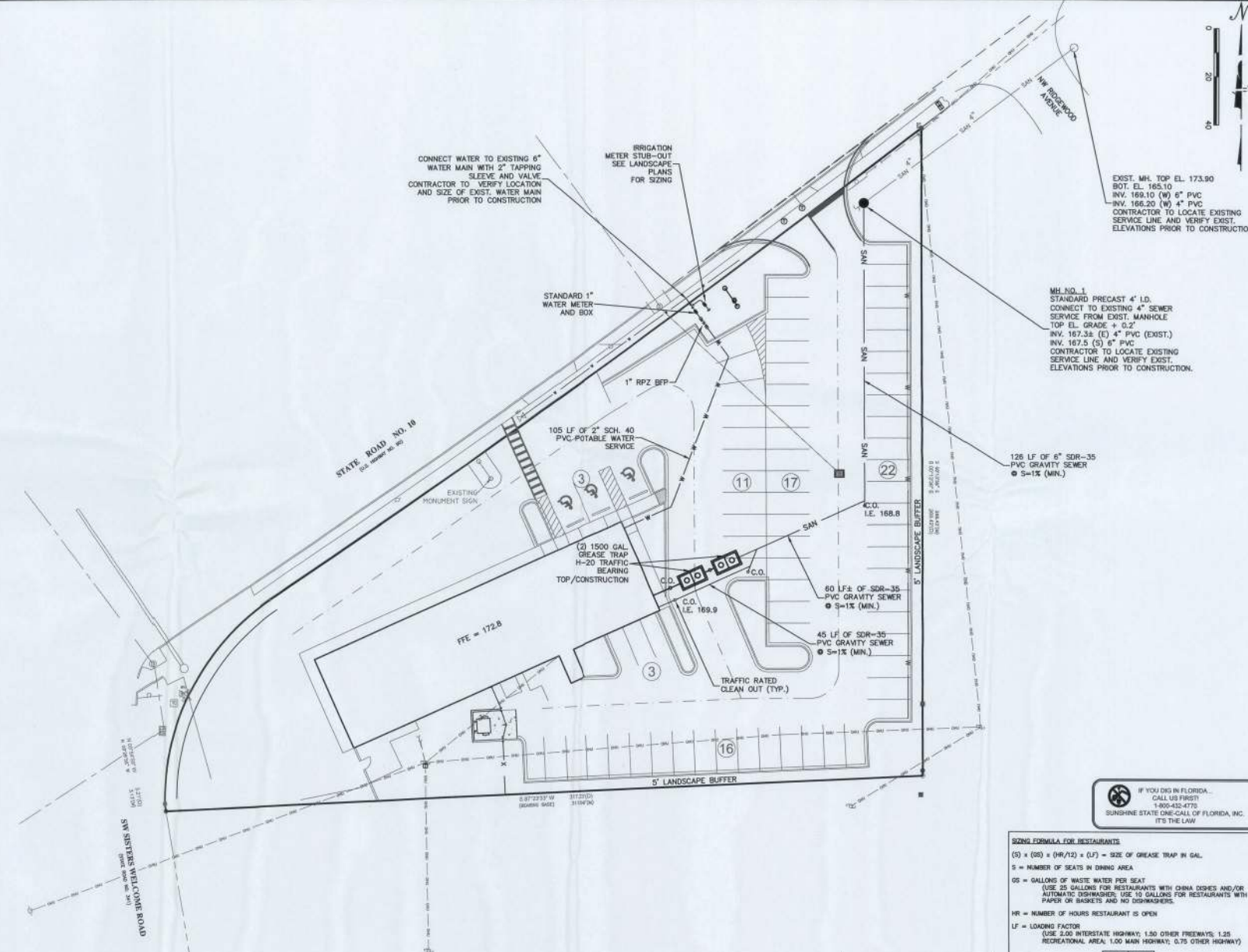
NOTE: SEE ARCHITECT LIFE SAFETY PLAN FOR ADA ACCESSIBLE FIRE EXIT

LEGEND	
	PROJECT BOUNDARY
	EXISTING CONTOURS
	SPOT ELEVATION
	SOIL NUMBERS
	SOIL DIVIDE LINE
	SOIL BEARING LOCATION
	TIME OF CONCENTRATION PATH
	RUNOFF FLOW ARROW
	DRAINAGE DIVIDE
	BRN NODAL AREA NAME & AREA
	JURISDICTIONAL WETLAND AREA

NOTES:  
1. ALL THE FACILITIES AND ELEMENTS OF THE SITE (INCLUDING ACCESSIBLE ROUTES AND PARKING) SHALL MEET THE REQUIREMENTS OF THE FLORIDA ACCESSIBILITY CODE FOR BUILDING CONSTRUCTION (FACBC), THE AMERICANS DISABILITY ACT ACCESSIBILITY GUIDELINES (ADAAG) ESTABLISHED BY FLORIDA LAW AND THE FAIR HOUSING ACT IF APPLICABLE.

Sheet No. 15 of 15

P:\CADD\Projects\151515 Lake City Seafood\151515.dwg



Date	Revision

AE JOB NO.: 14-03  
 DESIGN: E.J.A.  
 DRAWN: T.K.B.  
 CHECKED: E.J.A.  
 START DATE: 4-25-14  
 PLOT DATE: 6-23-2014

UTILITIES

LAKE CITY PARKING &  
 SEAFOOD RESTAURANT  
 MODIFICATIONS

**ALMOND**  
 ENGINEERING  
 CONSULTING CIVIL ENGINEERS  
 3000 HENRIKHS AVENUE JACKSONVILLE, FL 32207  
 (904) 308-0162 PHONE (904) 308-2185 FAX

00

CONNECT WATER TO EXISTING 6" WATER MAIN WITH 2" TAPPING SLEEVE AND VALVE. CONTRACTOR TO VERIFY LOCATION AND SIZE OF EXIST. WATER MAIN PRIOR TO CONSTRUCTION

IRRIGATION METER STUB-OUT SEE LANDSCAPE PLANS FOR SIZING

STANDARD 1" WATER METER AND BOX

EXIST. MH. TOP EL. 173.90  
 BOT. EL. 165.10  
 INV. 166.10 (W) 6" PVC  
 INV. 166.20 (W) 4" PVC  
 CONTRACTOR TO LOCATE EXISTING SERVICE LINE AND VERIFY EXIST. ELEVATIONS PRIOR TO CONSTRUCTION.

MH. NO. 1  
 STANDARD PRECAST 4' I.D. CONNECT TO EXISTING 4" SEWER SERVICE FROM EXIST. MANHOLE TOP EL. GRADE + 0.2'  
 INV. 167.5 (E) 4" PVC (EXIST.)  
 INV. 167.5 (S) 6" PVC  
 CONTRACTOR TO LOCATE EXISTING SERVICE LINE AND VERIFY EXIST. ELEVATIONS PRIOR TO CONSTRUCTION.

126 LF OF 6" SDR-35 PVC GRAVITY SEWER  
 @ 5=1% (MIN.)

80 LF OF SDR-35 PVC GRAVITY SEWER  
 @ 5=1% (MIN.)

45 LF OF SDR-35 PVC GRAVITY SEWER  
 @ 5=1% (MIN.)

105 LF OF 2" SCH. 40 PVC POTABLE WATER SERVICE

1500 GAL GREASE TRAP H-20 TRAFFIC BEARING TOP/CONSTRUCTION

TRAFFIC RATED CLEAN OUT (TYP.)

STATE ROAD NO. 18  
 (S.E. CORNER SEE 151)

FFE = 172.8

5' LANDSCAPE BUFFER

NOTE:  
 CONTRACTOR TO COORDINATE WATER AND SEWER SERVICE LOCATIONS WITH ARCHITECT/PLUMBING PLANS.

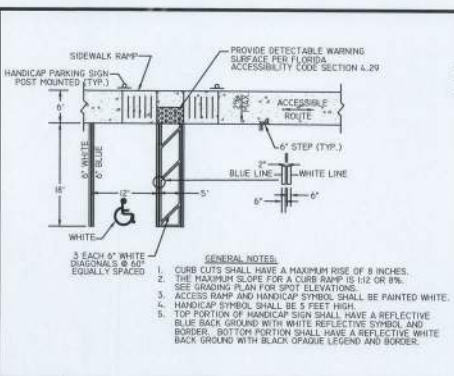
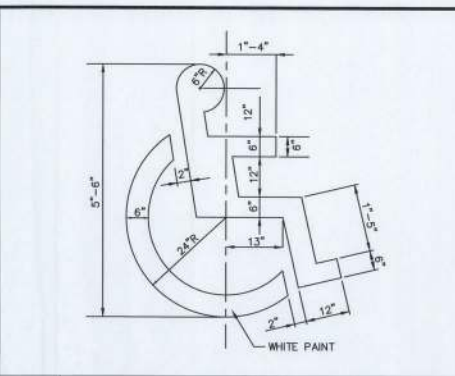
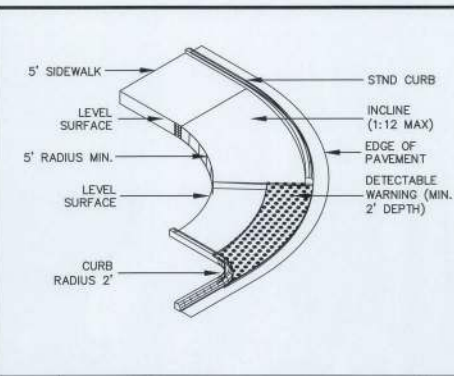
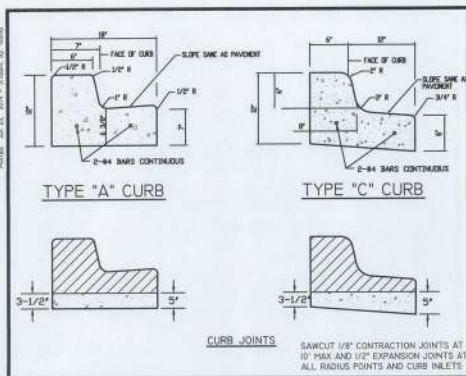


**SIZING FORMULA FOR RESTAURANTS**  
 $(S) \times (OS) \times (HR/12) \times (LF) = \text{SIZE OF GREASE TRAP IN GAL.}$   
 S = NUMBER OF SEATS IN DINING AREA  
 OS = GALLONS OF WASTE WATER PER SEAT  
 (USE 25 GALLONS FOR RESTAURANTS WITH CHINA DISHES AND/OR AUTOMATIC DISHWASHER; USE 10 GALLONS FOR RESTAURANTS WITH PAPER OR BASKETS AND NO DISHWASHERS)  
 HR = NUMBER OF HOURS RESTAURANT IS OPEN  
 LF = LOADING FACTOR  
 (USE 2.00 INTERSTATE HIGHWAY; 1.50 OTHER FREEWAYS; 1.25 RECREATIONAL AREA; 1.00 MAIN HIGHWAY; 0.75 OTHER HIGHWAY)

S	200
OS	10
HR	9
LF	2.0
3000 GAL.	

DATE: JAN. 15, 2014 - 3:55PM, BY: JMM

DATE: JAN. 15, 2014 - 3:55PM, BY: JMM



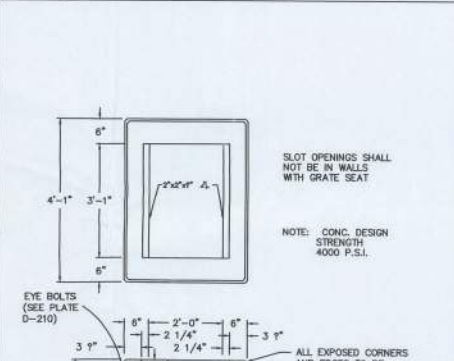
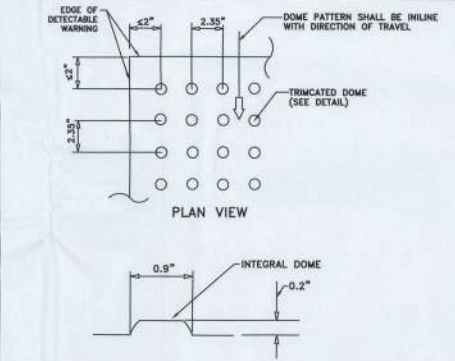
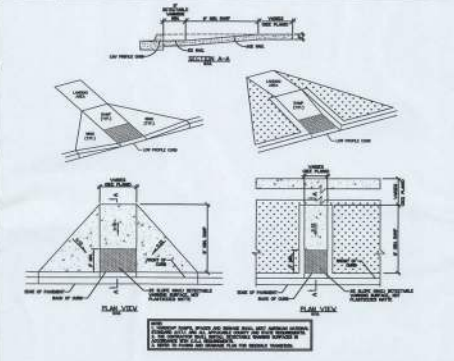
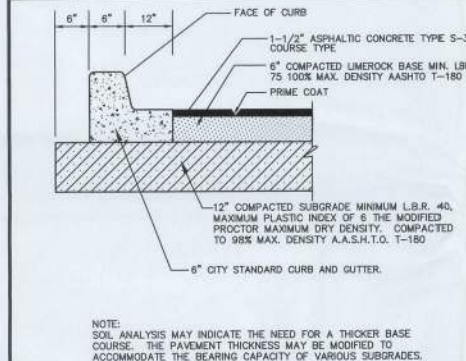
Date		Revision	

**1 CITY STANDARD CURBS**  
CITY OF JACKSONVILLE  
N.T.S.

**4 RAMP DETAIL (SIDEWALK FLUSH W/ CURB)**  
PAVING, GRADING, AND DRAINAGE  
N.T.S.

**7 HANDICAP PAVEMENT MARKINGS**  
AMERICAN DISABILITIES ACT  
N.T.S.

**10 HANDICAP PARKING SPACE**  
AMERICAN DISABILITIES ACT  
N.T.S.

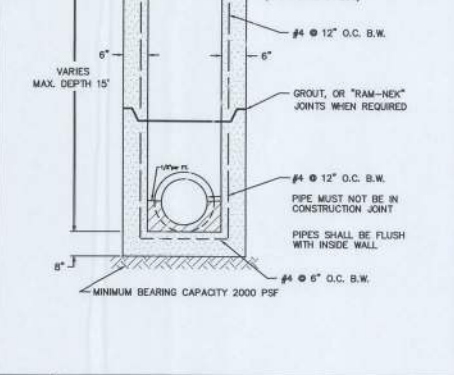
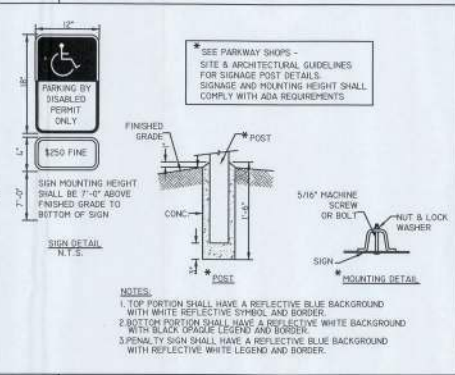
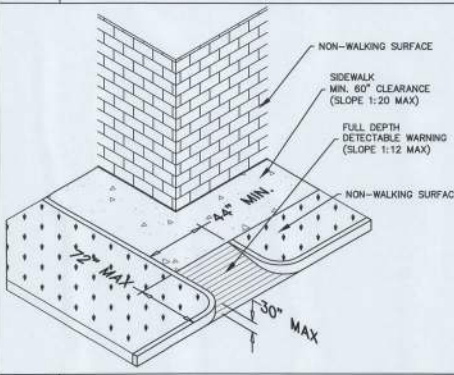
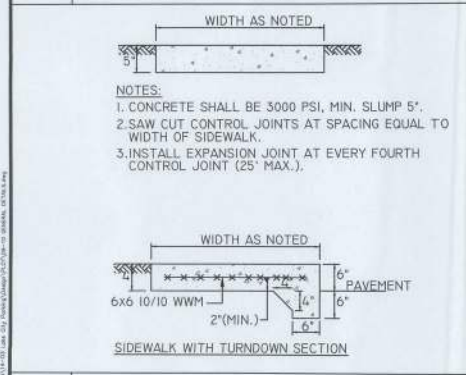


**2 TYPICAL ASPHALT PAVEMENT**  
PAVING, GRADING, AND DRAINAGE  
N.T.S.

**5 STANDARD HANDICAP RAMP DETAILS**  
PAVING, GRADING, AND DRAINAGE  
N.T.S.

**8 TRUNCATED DOME**  
PAVING, GRADING, AND DRAINAGE  
N.T.S.

**11 STORM SEWER INLET - TYPE 'C'**  
PAVING, GRADING, AND DRAINAGE  
N.T.S.



**3 SIDEWALK SECTION**  
PAVING, GRADING, AND DRAINAGE  
N.T.S.

**6 CURB RAMP W/O LANDING**  
AMERICAN DISABILITIES ACT  
N.T.S.

**9 HANDICAP SIGN AND POST**  
AMERICAN DISABILITIES ACT  
N.T.S.

**11 STORM SEWER INLET - TYPE 'C'**  
PAVING, GRADING, AND DRAINAGE  
N.T.S.

GENERAL DETAILS

LAKE CITY PARKING & SEAFOOD RESTAURANT MODIFICATIONS

**ALMOND**  
ENGINEERING

CONSULTING CIVIL ENGINEERS  
3000 S. W. 11th Street, Suite 200  
Jacksonville, FL 32207  
(904) 306-0162 Phone (904) 306-2185 Fax









### LAKE CITY PARKING

STORM WATER POLLUTION PREVENTION PLAN  
INSPECTION AND MAINTENANCE REPORT FORM  
TO BE COMPLETED EVERY 7 DAYS AND WITHIN 24 HOURS OF  
A RAINFALL EVENT OF 0.25 INCHES OR MORE

INSPECTOR \_\_\_\_\_ DATE \_\_\_\_\_  
INSPECTOR'S QUALIFICATIONS \_\_\_\_\_  
DATE SINCE LAST RAINFALL \_\_\_\_\_ AMOUNT OF LAST RAINFALL \_\_\_\_\_ INCHES

STABILIZATION MEASURES

INSPECTION AREA (DESCRIPTION OF LOCATION)	DATE SINCE LAST DISTURBANCE	DATE OF STABILIZATION (TERRAIN)	STABILIZED WITH	CONDITION

STABILIZATION REQUIRED \_\_\_\_\_  
TO BE PERFORMED BY \_\_\_\_\_ ON OR BEFORE \_\_\_\_\_

PAGE 1 OF 4

### LAKE CITY PARKING

STORM WATER POLLUTION PREVENTION PLAN  
INSPECTION AND MAINTENANCE REPORT FORM

DATE \_\_\_\_\_

STRUCTURAL CONTROLS

EARTH DIMENSIONS

DATE OR SCALE	FROM	TO	IS DRAINAGE STABILIZED?	IS THERE EVIDENCE OF SETTLING OR SUBSIDENCE?

MAINTENANCE REQUIRED FOR EARTH DIMENSIONS \_\_\_\_\_  
TO BE PERFORMED BY \_\_\_\_\_ ON OR BEFORE \_\_\_\_\_

CATCH BASINS/CURB INLETS/OUTFALL TURBIDITY CONTROLS

STRUCTURE/ OUTFALL	ARE TURBIDITY CONTROLS IN PLACE	OR BYPASSING?	DOES SETTLING OR BYPASSING CONTROL

MAINTENANCE REQUIRED FOR CATCH BASINS/CURB INLETS/OUTFALLS TURBIDITY CONTROLS \_\_\_\_\_  
TO BE PERFORMED BY \_\_\_\_\_ ON OR BEFORE \_\_\_\_\_

PAGE 2 OF 4

### LAKE CITY PARKING

STORM WATER POLLUTION PREVENTION PLAN  
INSPECTION AND MAINTENANCE REPORT FORM  
SEDIMENT BASIN

ANY EVIDENCE OF  
OVERTOPPING OF THE  
EMBANKMENT? \_\_\_\_\_

ANY EVIDENCE OF  
CONCRETE OR CURTAIN FROM  
SEDIMENT BASIN \_\_\_\_\_

MAINTENANCE REQUIRED FOR SEDIMENT BASIN \_\_\_\_\_  
TO BE PERFORMED BY \_\_\_\_\_ ON OR BEFORE \_\_\_\_\_

OTHER CONTROLS

STABILIZED CONSTRUCTION ENTRANCE

DOES EACH SEDIMENT BAY TRIGGER TO PASS?	IS THE GRAVEL CLEAN OR IS IT SEDIMENT?	DOES ALL TRAFFIC STABILIZED ENTRANCE TO LEAVE THE SITE?	IS THE REPORT REMOVED FROM THE WORKSHEET (IF APPLICABLE)

MAINTENANCE REQUIRED FOR STABILIZED CONSTRUCTION ENTRANCE: \_\_\_\_\_  
TO BE PERFORMED BY \_\_\_\_\_ ON OR BEFORE \_\_\_\_\_

PAGE 3 OF 4

### LAKE CITY PARKING

STORM WATER POLLUTION PREVENTION PLAN  
INSPECTION AND MAINTENANCE REPORT FORM

CHANGES REQUIRED TO THE POLLUTION PREVENTION PLAN \_\_\_\_\_

REASONS FOR CHANGES \_\_\_\_\_

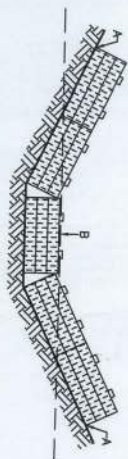
VERIFY ASSES RESULTS OF ALL FINE PARTICLES AND ALL  
ATTACHMENTS WERE PREPARED UNDER THE DIRECTION OR SUPERVISION IN  
ACCORDANCE WITH A SYSTEM DESIGNED TO ASSURE THAT QUALIFIED  
PERSONNEL PROPERLY GATHERED AND EVALUATED INFORMATION AND  
MANAGE THE SYSTEM, OR THOSE PERSONS DIRECTLY RESPONSIBLE FOR  
GATHERING THE INFORMATION, THE INFORMATION WAS BLUFF TRICK  
ACCURATE AND COMPLETE. I AM AWARE THAT THERE ARE SIGNIFICANT  
PENALTIES FOR SUBMITTING FALSE INFORMATION, INCLUDING THE  
POSSIBILITY OF FINE AND IMPRISONMENT FOR KNOWING VIOLATIONS.

SIGNATURE \_\_\_\_\_  
DATE \_\_\_\_\_

PAGE 4 OF 4

NOTE: THIS METHOD IS APPLICABLE WHERE HEAD CONVENIENCE OR DAMAGE TO ADJACENT STRUCTURES AND UNDESIRABLE FLOWING THROUGH SUCH

TRACTOR  
OPERATORS



POINTS A SHOULD BE HIGHER THAN POINT B

PROPER PLACEMENT OF STRAW BALE  
IN A DRAINAGE WAY  
N.T.S.



SECTION VIEW  
POINTS A SHOULD BE HIGHER THAN POINT B

PROPER PLACEMENT OF A  
FILTER BARRIER IN DRAINAGE WAY  
N.T.S.



1. SET POSTS AND EXCAVATE A 4" X 4" TRENCH  
UP-SLOPE ALONG THE LINE OF POSTS.



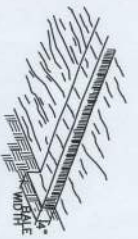
3. ATTACH THE FILTER FABRIC TO THE TRENCH,  
AND EXTEND IT INTO THE TRENCH.



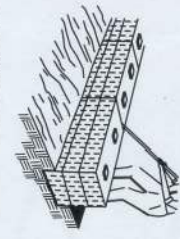
EXTENSION OF WIRE INTO THE TRENCH

CONSTRUCTION OF SILT  
N.T.S.

1. EXCAVATE THE TRENCH



2. EXCAVATE A 4" X 4" TRENCH UPSLOPE  
ALONG THE LINE OF STAKES

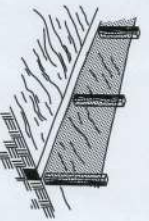


3. WEDGE LOOSE STRAW BETWEEN BALES.

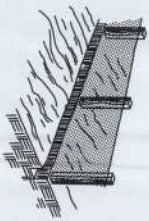


1. SET THE STAKES.

3. STAPLE FILTER MATERIAL TO STAKES  
AND EXTEND IT INTO THE TRENCH.

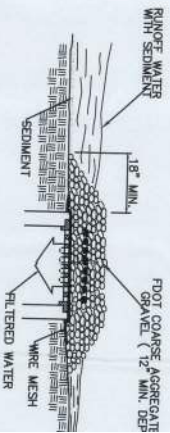


4. BACKFILL AND COMPACT THE EXCAVATED SOIL.



CONSTRUCTION OF A FILTER BARRIER  
N.T.S.

CONSTRUCTION OF A STR  
N.T.S.



SPECIFIC APPLICATION  
THIS METHOD OF INLET PROTECTION IS APPLICABLE WHERE HEAD CONVENIENCE OR DAMAGE TO ADJACENT STRUCTURES AND UNDESIRABLE FLOWING THROUGH SUCH

GRAVEL AND WIRE MESH DRIP INLET  
SEDIMENT FILTER  
N.T.S.

LET DRAINS  
WHERE  
TOWNS, SUCH  
N.T.S.

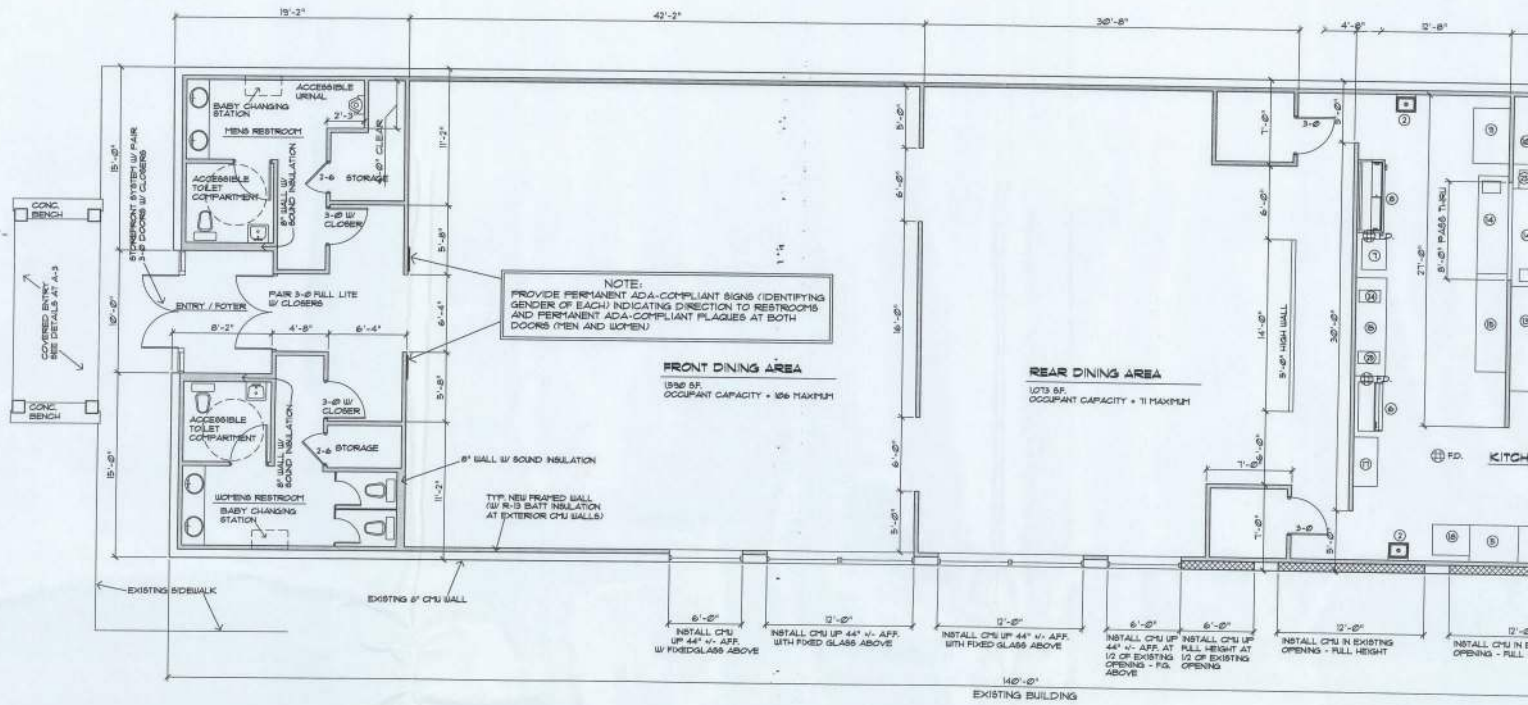
TO BALE

VENT PIPING  
NOFF

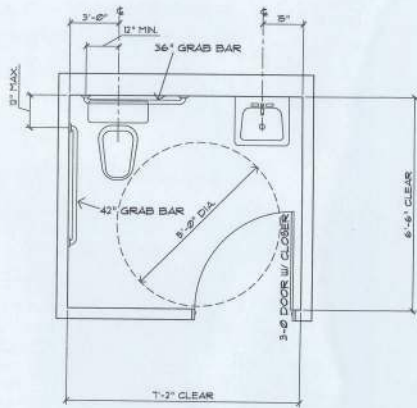




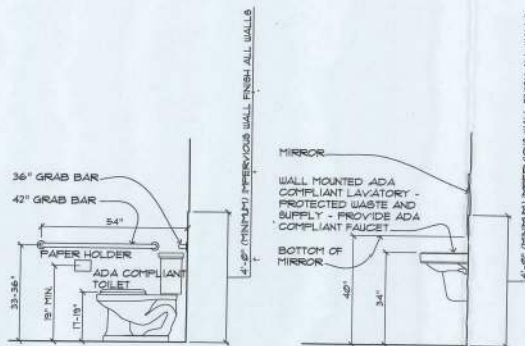




**EXISTING BUILDING BUILD-OUT PLAN / KITCHEN EQUIPMENT PLAN**  
SCALE: 3/16" = 1'-0"



**ACCESSIBLE TOILET COMPARTMENT**  
SCALE: 1/2" = 1'-0"

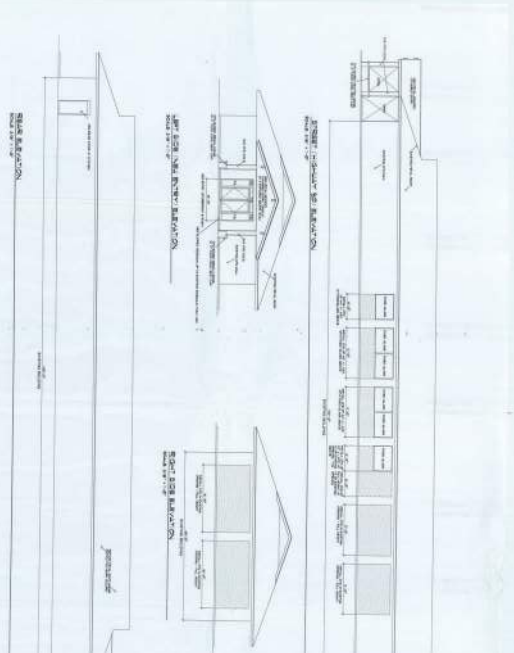


**ADA TOILET**  
SCALE: 1/2" = 1'-0"

**ADA LAVATORY**  
SCALE: 1/2" = 1'-0"

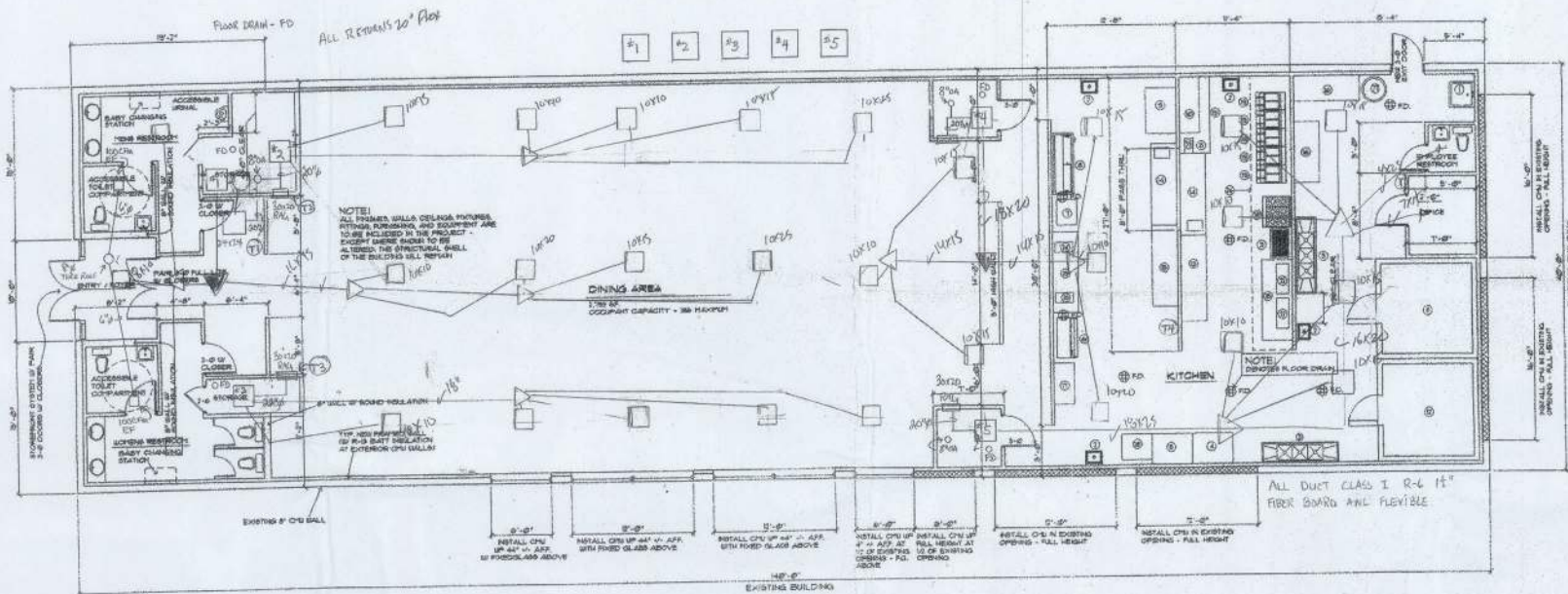
**NOTE:**  
CENTER OF TOILET PAPER DISPENSER  
1" - 9" FROM FRONT EDGE OF TOILET

KITCHEN EQUIPMENT AND FIXTURES SCHEDULE			
MARK	NO. OF UNITS	DESCRIPTION OF UNIT	COMPT.
①	1	MOP SINK	
②	4	HAND WASH SINK	
③	2	3 COMPARTMENT SINK	
④	1	DISHWASHER PRE-WASH	
⑤	1	DISHWASHER	
⑥	1	ICE MACHINE	
⑦	1	COKE MACHINE	
⑧	1	BEER COOLER	
⑨	1	SALAD COOLER	
⑩	1	ICE BIN	
⑪	1	WALK-IN COOLER	
⑫	1	WALK-IN FREEZER	
⑬	1	TABLE W/ 3 DOOR COOLER	
⑭	1	TABLE W/ STEAMER WELL & 3 DOOR COOLER	
⑮	4	TABLE	
⑯	2	SHELVES	VARIO
⑰	1	DRINK CUP SHELVES	
⑱	1	DISH RACK	
⑲	5	DEEP FRYER	
⑳	1	OVEN AND RANGE	
㉑	1	CHAR BROILER	
㉒	2	BROILER	
㉓	1	HEAT LAMP	
㉔	1	COFFEE MAKER	
㉕	1	TEA MAKER	
㉖	1	EXHAUST HOOD W/ FINE SUPPRESSION SYSTEM	FULL LI
㉗	1	WATER HEATER	75 GAL

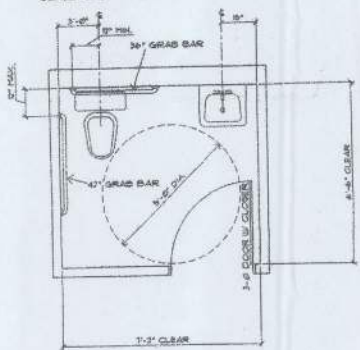




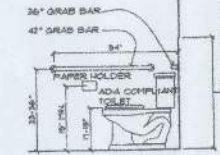
5-5TON CARRIER HEAT PUMPS 208/230/1160  
 FLOOR DRAINS BY PLUMBER  
 LAY IN STEP DOWN SIA DIFFUSERS



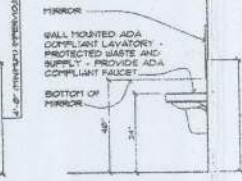
**EXISTING BUILDING BUILD-OUT PLAN - RESTAURANT**  
 SCALE: 3/16" = 1'-0"



**ACCESSIBLE TOILET COMPARTMENT**  
 SCALE: 1/2" = 1'-0"



**ADA TOILET**  
 SCALE: 1/2" = 1'-0"



**ADA LAVATORY**  
 SCALE: 1/2" = 1'-0"

KITCHEN EQUIPMENT AND FIXTURES SCHEDULE			
MARK	NO. OF UNITS	DESCRIPTION	COMMENTS
1	1	MOP SINK	
2	4	HAND WASH SINK	
3	2	3 COMPARTMENT SINK	
4	1	DISHWASHER PRE-WASH	
5	1	DISHWASHER	
6	1	ICE MACHINE	
7	1	COFFEE MACHINE	
8	1	BEER COOLER	
9	1	SALAD COOLER	
10	1	ICE BIN	
11	1	WALK-IN COOLER	
12	1	WALK-IN FREEZER	
13	1	TABLE W/ 3 DOOR COOLER	
14	1	TABLE W/ STEAMER WELL & 3 DOOR COOLER	VARIOUS SIZE UNITS - SEE PLAN
15	4	TABLES	
16	2	SHELVES	
17	1	DRINK GUP SHELVES	
18	1	DISH RACK	
19	5	DEEP FRYER	
20	1	OVEN AND RANGE	
21	1	CHAR BROILER	
22	1	BROILER	
23	1	MEAT LAMP	
24	1	COFFEE MAKER	
25	1	TEA MAKER	
26	1	EXHAUST HOOD W/ FIRE SUPPRESSION SYSTEM	FULL LENGTH OF WALL - 37'-0"
27	1	WATER HEATER	75-GALLON GAS-FIRED

EXISTING BUILDING BUILD-OUT FOR  
**CEDAR RIVER SEAFOOD RESTAURANT**  
 1592 W. US HIGHWAY 90  
 LAKE CITY, FL 32055

**FRANK SPENCER III**  
 ARCHITECT  
 1112 15TH AVENUE NORTH JACKSONVILLE BEACH, FL 32250



FLORIDA REG.  
 A00015664

THIS DOCUMENT IS THE PROPERTY OF FRANK SPENCER III ARCHITECT. IT IS TO BE USED ONLY FOR THE PROJECT AND SITE SPECIFICALLY IDENTIFIED HEREON. IT IS NOT TO BE REPRODUCED, COPIED, OR TRANSMITTED IN ANY FORM OR BY ANY MEANS, ELECTRONIC OR MECHANICAL, INCLUDING PHOTOCOPYING, RECORDING, OR BY ANY INFORMATION STORAGE AND RETRIEVAL SYSTEM, WITHOUT THE WRITTEN PERMISSION OF FRANK SPENCER III ARCHITECT.

JOB COP11-0214-1  
 DATE 3/12/2014

REVISIONS

NO.	DATE	DESCRIPTION

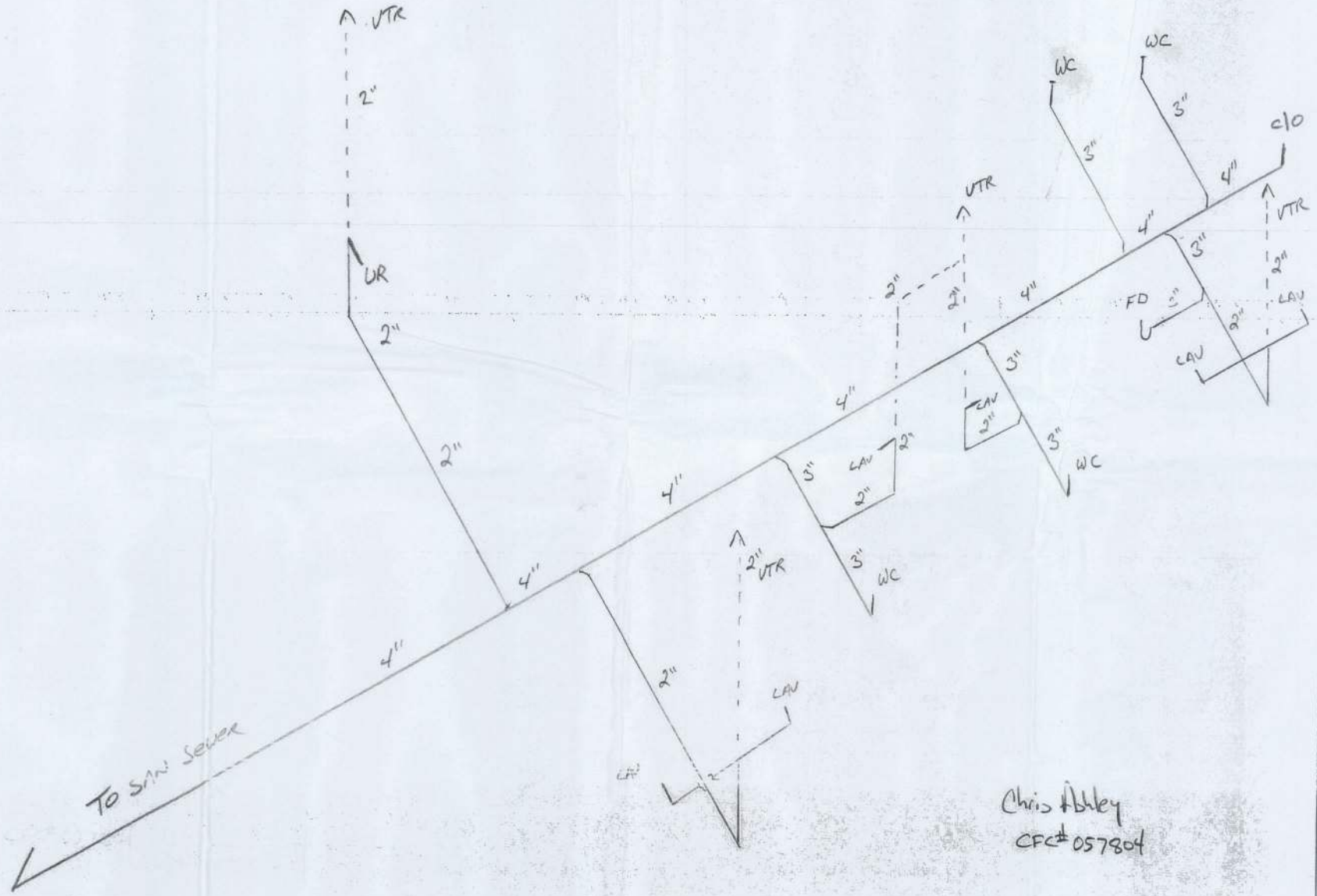
SHEET **A-1** of -





Cedar River Seaford  
1592 W. US Highway 90

Bathroom Sanitary



Chris Ahley  
CFC# 057804

Cedar River Seafood  
1592 W. US Hwy 90

Grease Line

