

plastpro

5200 W. CENTURY BLVD.
LOS ANGELES, CA 90045

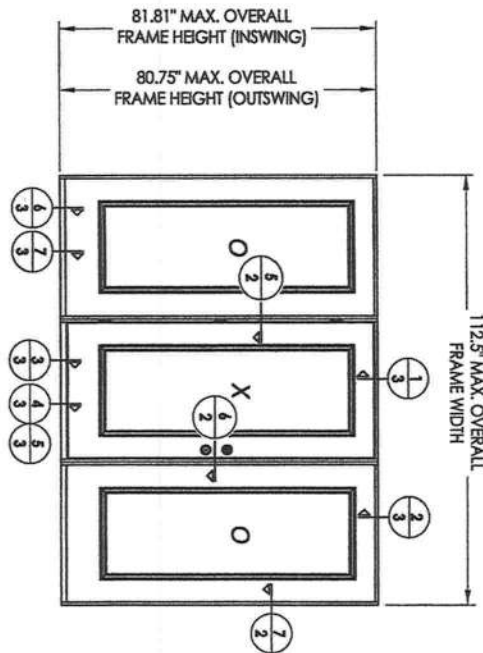
GLAZED FIBERGLASS SINGLE DOOR w/ or w/out SIDELITE(S) Inswing / Outswinging "IMPACT"

GENERAL NOTES

- This product anchoring drawing has been developed and is in compliance with the 6th Edition (2017) Florida Building Code (FBC) structural requirements including the "High Velocity Hurricane Zone" (HVHZ). See the Certification Agency Certificate for sizes, specifications and rating.
- Product anchors shall be as listed and spaced as shown on details. Anchor embedment to base material shall be beyond wall dressing or stucco.
- When used in the "HVHZ" this product complies with Section 1626 of the Florida Building Code and does not require an impact resistant covering.
- When used in areas outside of the "HVHZ" requiring wind borne debris protection this product complies with FBC Sections 1609.1.2 & R301.2.1.2 and does not require an impact resistant covering. This product meets missile level "D" and includes Wind Zone 4 as defined in ASTM E 1996 and FBC Sections 1609.1.2.2 & R301.2.1.2.1.
- For 2x stud construction, anchoring of these units shall be the same as that shown for 2x buck masonry construction.
- Site conditions that deviate from the details of this drawing require further engineering analysis by a licensed engineer or registered architect.
- Outswing configurations utilizing the high dam sill (see Section 5/3), meet water infiltration requirements for "HVHZ". All other configurations do not meet the water infiltration requirements for the "HVHZ" and must be installed only in non-habitable areas or of habitable locations protected by an overhang or canopy such that the angle between the edge of canopy or overhang to sill is less than 45 degrees.

TABLE OF CONTENTS

SHEET #	DESCRIPTION
1	Typical elevations, design pressures & general notes
2	Horizontal cross sections
3	Vertical cross sections
4	Buck anchoring & bill of materials
5	Frame anchoring & glazing details



CONFIGURATION	MAX. FRAME DIMENSION	DESIGN PRESSURE (PSF)	
		POSITIVE	NEGATIVE
X	37.5" x 81.81"	+50.0	-50.0
XO/OX	75.0" x 81.81"	+50.0	-50.0
OXO	112.5" x 81.81"	+50.0	-50.0



October 14, 2017

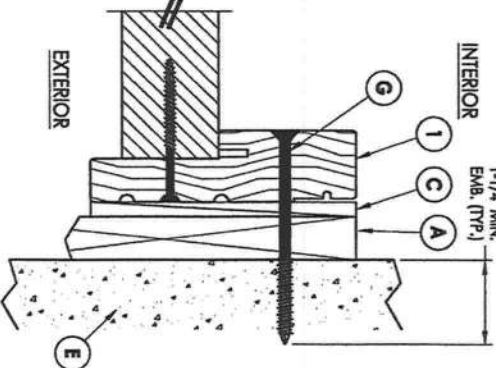
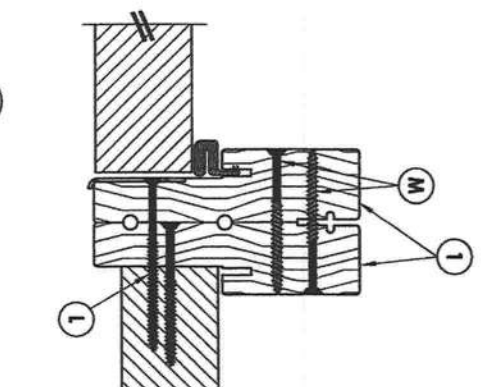
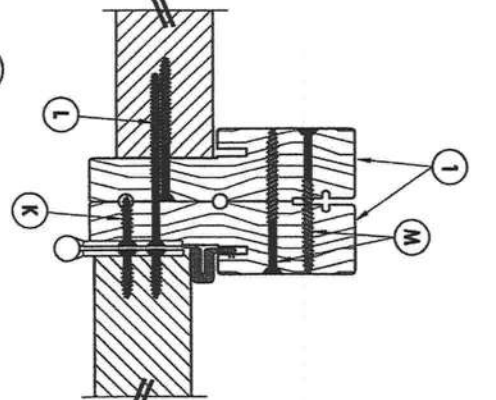
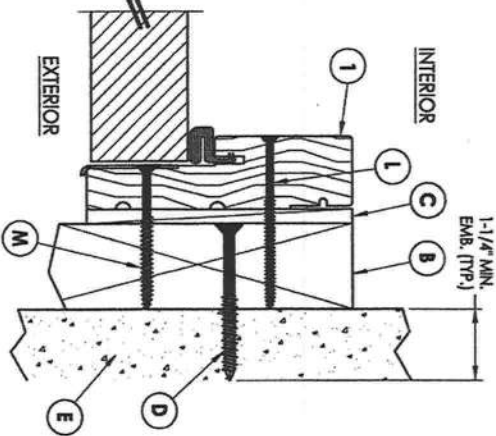
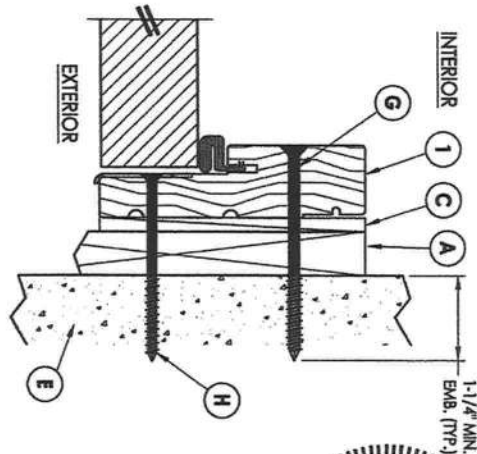
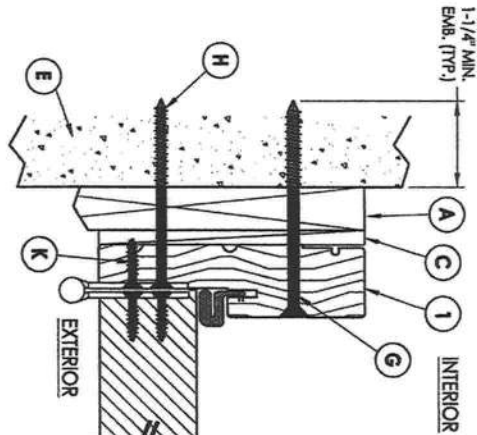
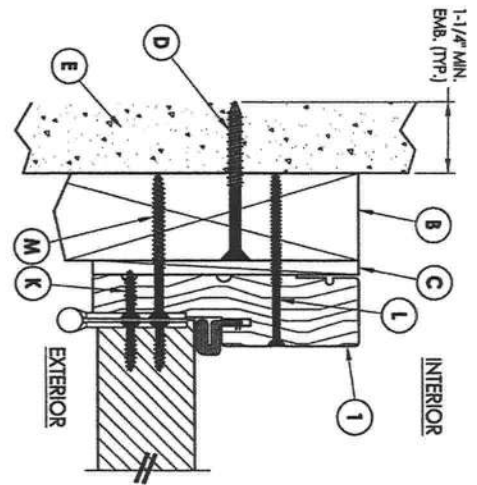
Documents Prepared By:
Lyndon F. Schmidt
P.E. No. 43409

RW BUILDING CONSULTANTS, INC.
P.O. Box 230, Valrico, FL 33595
Phone No.: 813.659.9197
FBPE C.A. No. 9813

PRODUCT:	PLASTPRO FIBERGLASS DOOR
PART OR ASSEMBLY:	TYPICAL ELEVATION, DESIGN PRESSURES & GENERAL NOTES

NO.	DATE	REVISIONS
2	10/14/17	UPDATE TO 6TH ED. (2017) FBC
1	8/04/14	CLARIFIED INSTALLATION DETAILS

DATE:	12/10/12
SCALE:	N.T.S.
DWG. BY:	JK
CHK. BY:	LFS
DRAWING NO.:	FL-16094.1
SHEET	1 OF 5



October 14, 2017

Documents Prepared By:
Lyndon F. Schmidt
P.E. No. 43409

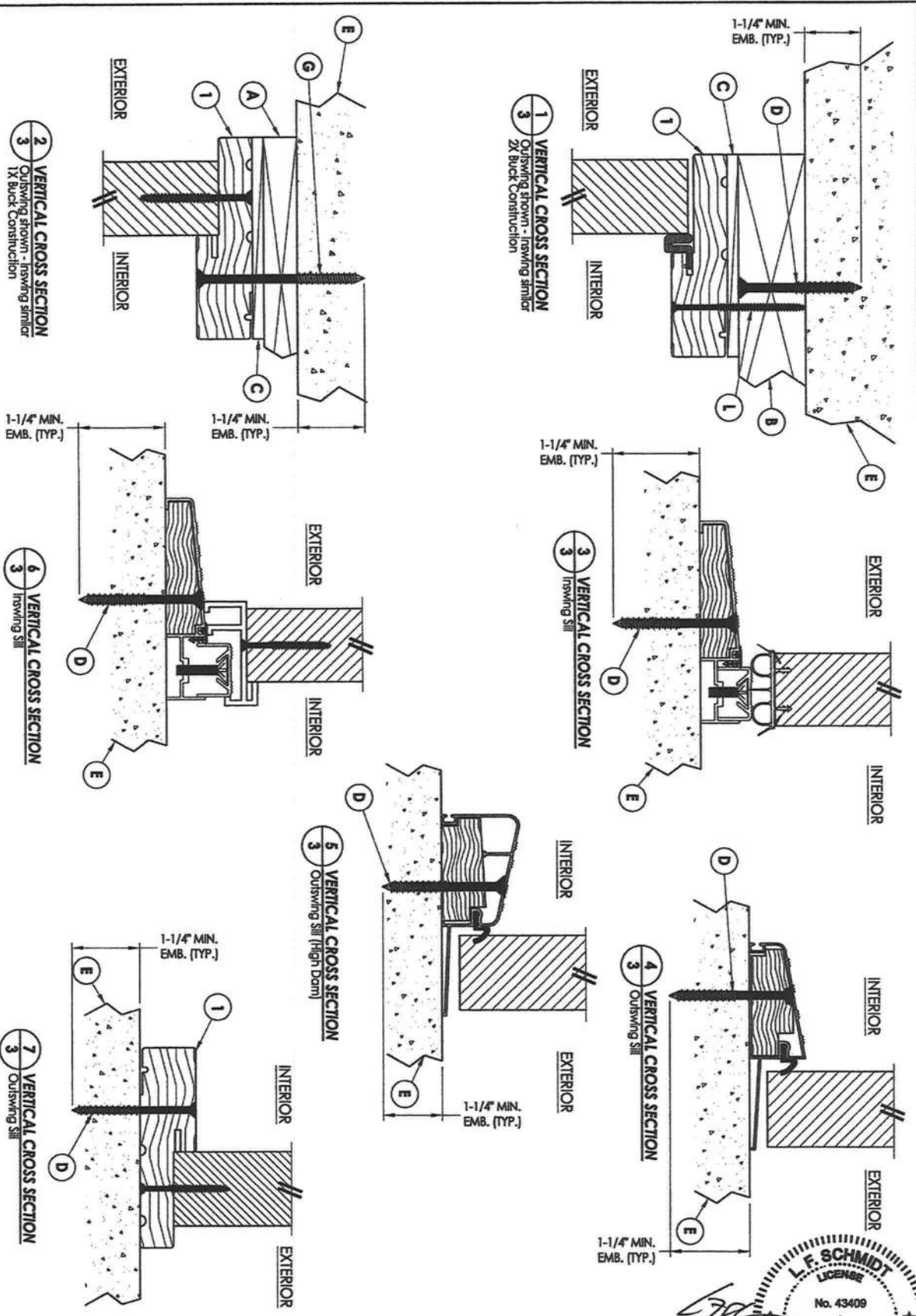
RW BUILDING CONSULTANTS, INC.
P.O. Box 230, Valrico, FL 33595
Phone No.: 813.659.9197
FBPE C.A. No. 9813

PRODUCT:
PLASTPRO INC.
FIBERGLASS DOOR

PART OR ASSEMBLY:
HORIZONTAL
CROSS SECTIONS

NO.	DATE	REVISIONS	BY
2	10/14/17	UPDATE TO 6TH ED. (2017) FBC	LFS
1	8/04/14	CLARIFIED INSTALLATION DETAILS	LFS

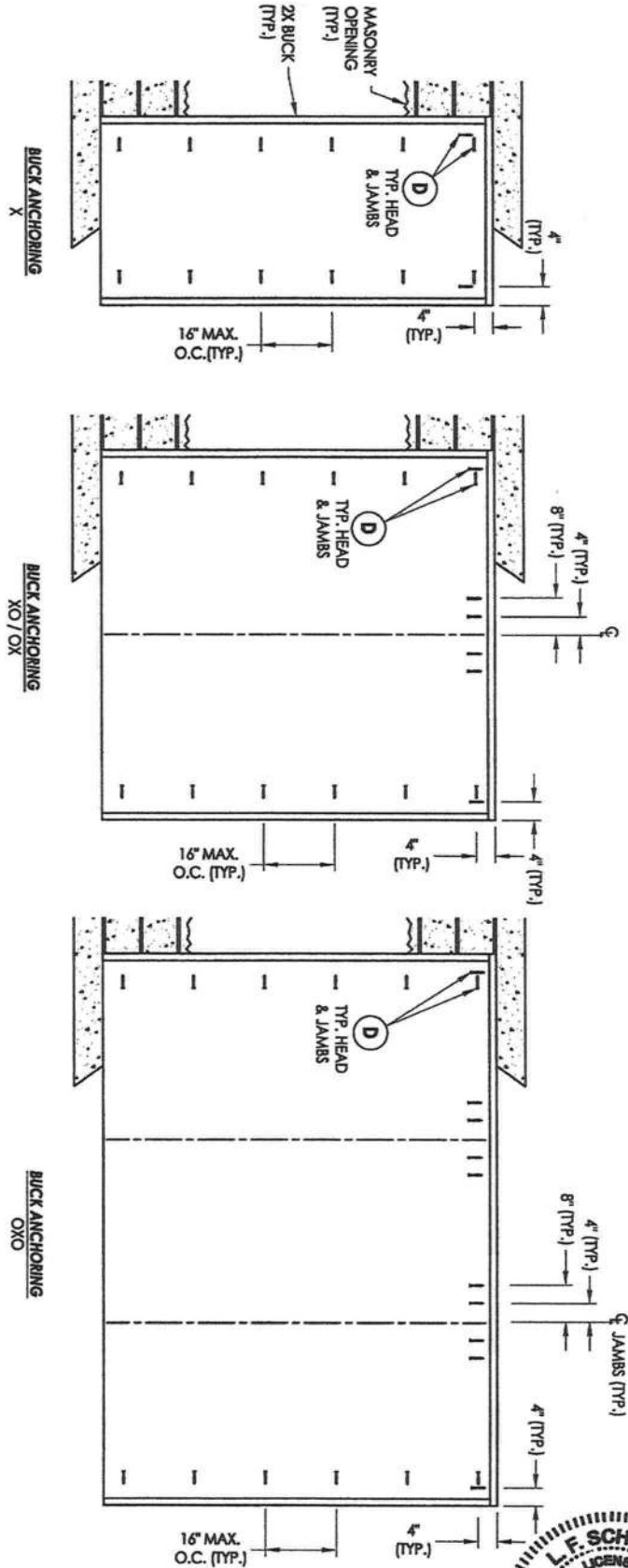
DATE 12/10/12
SCALE: N.T.S.
DWG. BR: JJK
CHK. BR: LFS
DRAWING NO.: FL-16094.1
SHEET 2 OF 5



October 14, 2017

Documents Prepared By:
 Lyndon F. Schmidt
 P.E. No. 43409
 BUILDING CONSULTANTS, INC.
 P.O. Box 230, Valrico, FL 33595
 Phone No.: 813.659.9197
 FBPE C.A. No. 9813

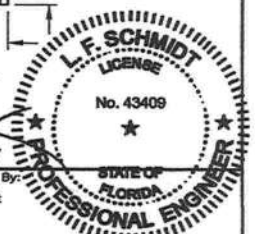
PRODUCT:		PLASTPRO INC. FIBERGLASS DOOR	
PART OR ASSEMBLY:		VERTICAL CROSS SECTIONS	
NO.	DATE	REVISIONS	BY
2	10/14/17	UPDATE TO 6TH ED. (2017) FBC	LFS
1	8/04/14	CLARIFIED INSTALLATION DETAILS	LFS



BILL OF MATERIALS		MATERIAL
ITEM #	DESCRIPTION	
A	1X BUCK (SG >= 0.55)	WOOD
B	2X BUCK (SG >= 0.55)	WOOD
C	1/4" MAX. SHIM SPACE	-
D	1/4" X 2-3/4" PH TW CONCRETE SCREW	STEEL
E	MASONRY - 3,000 PSI MIN. CONCRETE CONFORMING TO ACI 301 OR HOLLOW BLOCK CONFORMING TO ASTM C90	CONCRETE
G	1/4" X 3-3/4" PH TW CONCRETE SCREW	STEEL
H	3/16" x 3-1/4" PH TW CONCRETE SCREW	STEEL
K	#9 X 3/4" PH WOOD SCREW	STEEL
L	#8 X 3" PH WOOD SCREW (1-1/2" MIN. EMBEDMENT)	STEEL
M	#10 X 2-1/2" PH WOOD SCREW	STEEL
I	FINGER JOINTED PINE HEAD & JAMB (SG >= 0.42)	WOOD

ANCHOR TYPE	ANCHOR SIZE	MIN. EMBEDMENT	MIN. CLEARANCE TO MASONRY EDGE	MIN. CLEARANCE TO ADJACENT ANCHOR
TW	1/4"	1-1/4"	2"	4"
TARCON®				

- CONCRETE ANCHOR NOTES:**
1. Substitution of equal concrete anchors from a different supplier may have different edge distance and center distance requirements.
 2. Concrete anchor locations at the corners may be adjusted to maintain the min. edge distance to mortar joints. Concrete anchor locations noted as "MAX. O.C. (TYP.)" must be adjusted to maintain the min. edge distance to mortar joints; additional concrete anchors may be required to ensure the "MAX. O.C. (TYP.)" dimension is not exceeded.
 3. Concrete anchor fabric.



October 14, 2017

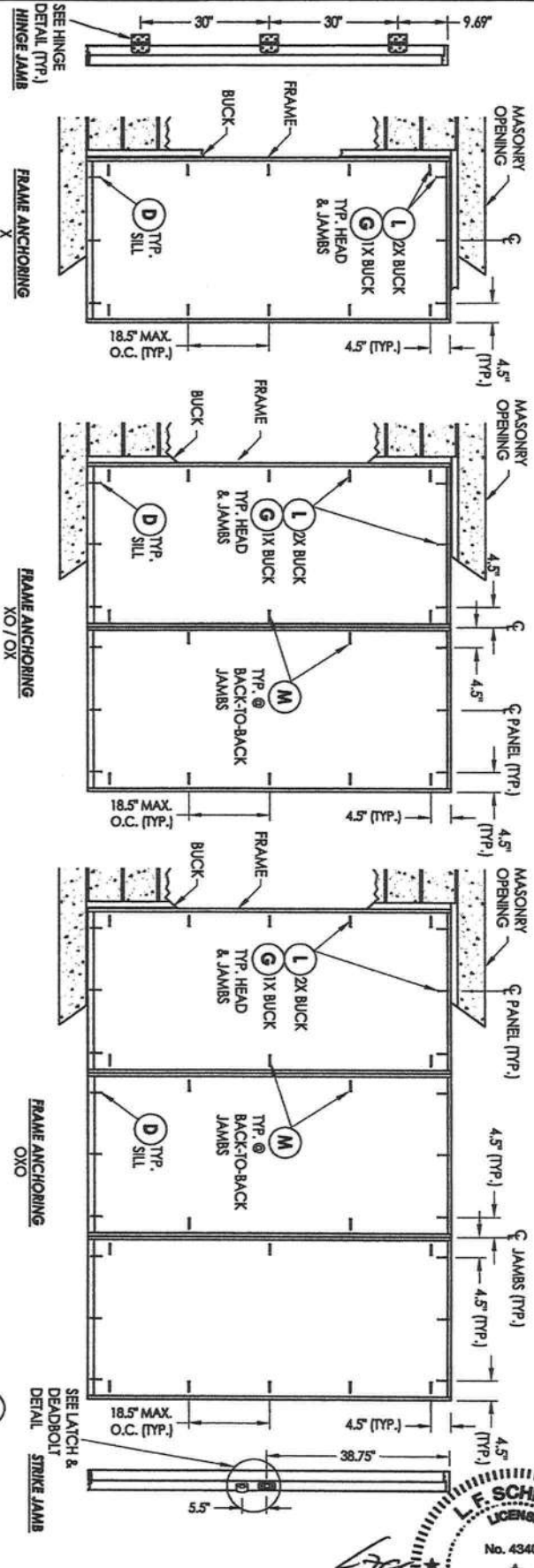
Documents Prepared By:
Lyndon F. Schmidt
P.E. No. 43409

RW BUILDING CONSULTANTS, INC.
P.O. Box 230, Valrico, FL 33595
Phone No.: 813.659.9197
FBPE C.A. No. 9813

PRODUCT:	PLASTPRO FIBERGLASS DOOR
PART OR ASSEMBLY:	BUCK ANCHORING & BILL OF MATERIALS

NO.	DATE	REVISIONS	LFS	LFS	BY
2	10/14/17	UPDATE TO 6TH ED. (2017) FBC	LFS		
1	8/04/14	CLARIFIED INSTALLATION DETAILS	LFS		

DATE:	12/10/12
SCALE:	N.T.S.
DWG. BR:	JK
CHK. BR:	LFS
DRAWING NO.:	FL-16094.1
SHEET:	4 OF 5

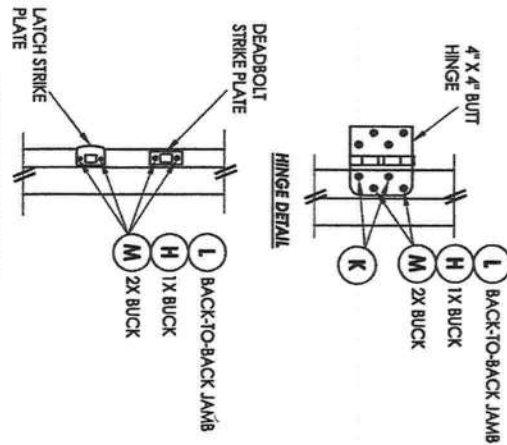
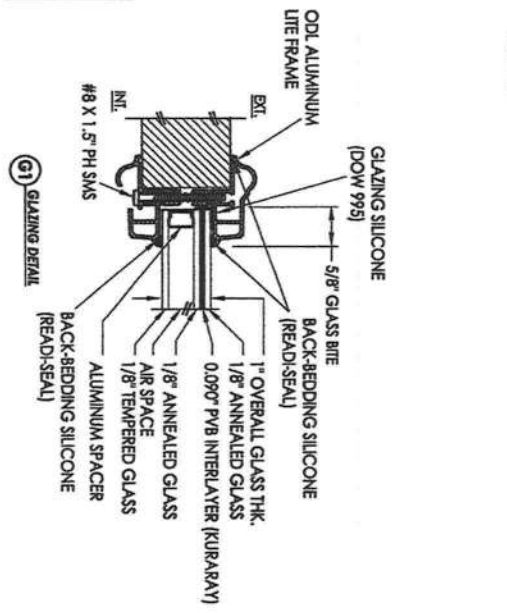


HARDWARE TABLE	
MANUFACTURER	MODEL
KNICKER	KNOR: SIGNATURE SERIES (980)
	DEADBOLT: SIGNATURE SERIES (980)

- CONCRETE ANCHOR NOTES:**
1. Substitution of equal concrete anchors from a different supplier may have different edge distance and center distance requirements.
 2. Concrete anchor locations of the corners may be adjusted to maintain the min. edge distance to mortar joints. Concrete anchor locations noted as "MAX. O.C. (TYP.)" may be adjusted to maintain the min. edge distance to mortar joints; additional concrete anchors may be required to ensure the "MAX. O.C. (TYP.)" dimension are not exceeded.
 3. Concrete anchor table:

ANCHOR TYPE	ANCHOR SIZE	MIN. EMBEDMENT	MIN. CLEARANCE TO MASONRY EDGE	MIN. CLEARANCE TO ADJACENT ANCHOR
T/W	1/4"	1-1/4"	2"	4"
T/W	3/16"	1-1/4"	3"	1-1/2"

- WOOD SCREW INSTALLATION NOTES:**
1. Maintain a minimum 5/8" edge distance, 1" end distance, & 1" o.c. spacing of wood screws to prevent the splitting of wood.



October 14, 2017

Documents Prepared By:
Lyndon F. Schmidt
P.E. No. 43409

L.F. SCHMIDT
LICENSE
No. 43409
PROFESSIONAL ENGINEER
STATE OF FLORIDA

R.W. BUILDING CONSULTANTS, INC.
P.O. Box 230, Vairco, FL 33595
Phone No.: 813.659.9197
FBPE C.A. No. 9813

NO.	DATE	REVISIONS	LFS	BY
2	10/14/17	UPDATE TO 6TH ED. (2017) FBC	LFS	
1	8/04/14	CLARIFIED INSTALLATION DETAILS	LFS	

DATE: 12/10/12
SCALE: N.T.S.
DWG. BY: JK
CHK. BY: LFS

PRODUCT: PLASTPRO FIBERGLASS DOOR
PART OR ASSEMBLY: FRAME ANCHORING & GLAZING DETAILS

SHEET 5 OF 5