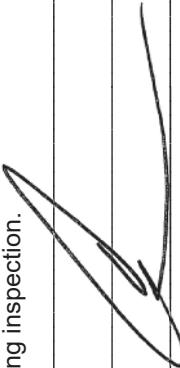


# COLUMBIA COUNTY PRODUCT APPROVAL SPECIFICATION SHEET

As required by Florida Statute 553.842 and Florida Administrative Code 9B-72, please provide the information and approval numbers on the building components listed below if they will be utilized on the construction project for which you are applying for a building permit. We recommend you contact your local product supplier should you not know the product approval number for any of the applicable listed products. Statewide approved products are listed online at [www.floridabuilding.org](http://www.floridabuilding.org).

Category/Subcategory	Manufacturer	Product Description	Approval Number(s)
<b>1. EXTERIOR DOORS</b>			
A. SWINGING			
B. SLIDING			
<b>C. SECTIONAL/ROLL UP</b>			
D. OTHER			
<b>2. WINDOWS</b>			
A. SINGLE/DOUBLE HUNG	ReliaBit	Single Hung Window	20100.1 20100.2
B. HORIZONTAL SLIDER	ReliaBit	Slider Window	20472.1
C. CASEMENT			
D. FIXED			
E. MULLION			
F. SKYLIGHTS	Atrium	Mullion	22377.1
G. OTHER			
<b>3. PANEL WALL</b>			
A. SIDING			
B. SOFFITS			
C. STOREFRONTS			
D. GLASS BLOCK			
E. OTHER			
<b>4. ROOFING PRODUCTS</b>			
A. ASPHALT SHINGLES			
B. NON-STRUCT METAL			
C. ROOFING TILES			
D. SINGLE PLY ROOF			
E. OTHER			
<b>5. STRUCT COMPONENTS</b>			
A. WOOD CONNECTORS			
B. WOOD ANCHORS			
C. TRUSS PLATES			
D. INSULATION FORMS			
E. LINTELS			
F. OTHERS			
<b>6. NEW EXTERIOR</b>			
A. ENVELOPE PRODUCTS			

The products listed below did not demonstrate product approval at plan review. I understand that at the time of inspection of these products, the following information must be available to the inspector on the jobsite; (1) copy of the product approval (2) performance characteristics which the product was tested and certified to comply with (3) copy of the applicable manufacturer's installation requirements. Further, I understand these products may have to be removed if approval cannot be demonstrated during inspection.

  
 \_\_\_\_\_  
 \_\_\_\_\_  
 \_\_\_\_\_

2/6/2023

APPLICANT SIGNATURE

DATE



**Product Approval**  
USER: Public User

[Product Approval Menu](#) > [Product or Application Search](#) > [Application List](#)

**Search Criteria**

Code Version	2020	FL #	20100.1
Application Type	ALL	Product Manufacturer	ALL
Category	ALL	Subcategory	ALL
Application Status	ALL	Compliance Method	ALL
Quality Assurance Entity	ALL	Quality Assurance Entity Contract Expired	ALL
Product Model, Number or Name	ALL	Product Description	ALL
Approved for use in HVHZ	ALL	Approved for use outside HVHZ	ALL
Impact Resistant	ALL	Design Pressure	ALL
Other	ALL		

[Refine Search](#)

**Search Results - Applications**

<a href="#">FL#</a>	<a href="#">Type</a>	<a href="#">Manufacturer</a>	<a href="#">Validated By</a>	<a href="#">Status</a>
<a href="#">FL20100-R11</a> <a href="#">History</a>	Affirmation	Atrium Windows & Doors FL#: FL20100.1 Model: Series 120/130 Single Hung Continuous Head and Sill (CHS) Description: Twin and Triple CHS Windows Category: Windows Subcategory: Single Hung	National Accreditation & Management Institute (804) 684-5124	Approved

\*Approved by DBPR. Approvals by DBPR shall be reviewed and ratified by the POC and/or the Commission if necessary.

[Contact Us](#) :: [2601 Blair Stone Road, Tallahassee FL 32399](#) Phone: 850-487-1824

The State of Florida is an AA/EEO employer. [Copyright 2007-2013 State of Florida](#). :: [Privacy Statement](#) :: [Accessibility Statement](#) :: [Refund Statement](#)

Under Florida law, email addresses are public records. If you do not want your e-mail address released in response to a public-records request, do not send electronic mail to this entity. Instead, contact the office by phone or by traditional mail. If you have any questions, please contact 850.487.1395. \*Pursuant to Section 455.275(1), Florida Statutes, effective October 1, 2012, licensees licensed under Chapter 455, F.S. must provide the Department with an email address if they have one. The emails provided may be used for official communication with the licensee. However email addresses are public record. If you do not wish to supply a personal address, please provide the Department with an email address which can be made available to the public. To determine if you are a licensee under Chapter 455, F.S., please click [here](#).

**Product Approval Accepts:**





**Product Approval**  
USER: Public User

[Product Approval Menu](#) > [Product or Application Search](#) > [Application List](#) > **Application Detail**

► OFFICE OF THE  
SECRETARY

FL # FL20100-R11

Application Type Affirmation

Code Version 2020

Application Status Approved

Comments

Archived

Product Manufacturer

Address/Phone/Email

Atrium Windows & Doors  
300 Welcome Center Blvd.  
Welcome, NC 27374  
(800) 542-9118 Ext 413596  
luanne.harris@cornerstone-bb.com

Authorized Signature

Harris Luanne  
luanne.harris@cornerstone-bb.com

Technical Representative

Address/Phone/Email

Quality Assurance Representative

Address/Phone/Email

Luanne Harris  
300 Welcome Center Blvd.  
Welcome, NC 27374  
(800) 542-9118 Ext 413596  
luanne.harris@cornerstone-bb.com

Category

Subcategory

Windows

Single Hung

Compliance Method

Certification Mark or Listing

Certification Agency

Validated By

National Accreditation & Management Institute  
National Accreditation & Management Institute

Referenced Standard and Year (of Standard)

**Standard**

AAAMA 450

AAAMA/WDMA/CSA 101/I.S.2/A440

AAAMA/WDMA/CSA 101/I.S.2/A440

**Year**

2010

2011

2008

Equivalence of Product Standards

Certified By

I affirm that there are no changes in the new Florida Building Code which affect my product(s) and my product(s) are in compliance with the new Florida Building Code.

Documentation from approved Evaluation or Validation Entity  Yes  No  N/A





9001 AMBASSADOR ROW  
DALLAS, TEXAS 75247  
PH: (214)537-2696 FAX: (214)424-6734

**PREPARED BY:**  
BUILDING DROPS, INC.  
398 E. DANIA BEACH BLVD., STE. 338  
PH: (954)399-9478  
FAX: (954)744-8738  
WEB: WWW.BUILDINGDROPS.COM

**REMARKS**

BY	DATE	DESCRIPTION
SM	06.03.14	A-FRC 5th ED. CODE CHANGE
LS	02.27.17	B-CERT AGENCY UPDATE
AG	10.03.17	C-FRC 2017 CODE CHANGE
YC	04.16.20	D-ALUMINUM SUBSTRATE

D-ALUMINUM SUBSTRATE  
FROM THE REQUIREMENTS DETAILED HEREIN, A LICENSED ENGINEER OR ARCHITECT SHALL PREPARE SITE SPECIFIC DOCUMENTS FOR USE WITH THIS DOCUMENT.



HERMES F. NORENO, P.E.  
FLORIDA, P.E. NO. 73778  
BUILDING PROPS, INC.  
398 E. DANIA BEACH BLVD., STE. 338  
DANIA BEACH, FL 33004  
BRFC CERT. OF AUTHORIZATION NO. 29576

FL #: **FL20100**  
DATE: **01.02.2020**  
DWG. BY: **YC** CHK. BY: **HFN**  
SCALE: **NTS**  
DWG. #: **AT113**  
SECTION: **2**  
OF 7

2  
OF 7

SECTION:

DWG. #: ATR113

SCALE: NTS

DWG. BY: YC CHK. BY: HFN

DATE: 01.02.2020

FL #: FL20100

PREPARED BY: BUILDING DROPS, INC.

398 E. DANIA BEACH BLVD., STE. 338

PH: (954)399-9478

FAX: (954)744-8738

WEB: WWW.BUILDINGDROPS.COM

9001 AMBASSADOR ROW

DALLAS, TEXAS 75247

PH: (214)537-2696 FAX: (214)424-6734

ATRIUM WINDOWS AND DOORS

PREPARED BY:

BUILDING DROPS, INC.

398 E. DANIA BEACH BLVD., STE. 338

PH: (954)399-9478

FAX: (954)744-8738

WEB: WWW.BUILDINGDROPS.COM

9001 AMBASSADOR ROW

DALLAS, TEXAS 75247

PH: (214)537-2696 FAX: (214)424-6734

ATRIUM WINDOWS AND DOORS

PREPARED BY:

BUILDING DROPS, INC.

398 E. DANIA BEACH BLVD., STE. 338

PH: (954)399-9478

FAX: (954)744-8738

WEB: WWW.BUILDINGDROPS.COM

9001 AMBASSADOR ROW

DALLAS, TEXAS 75247

PH: (214)537-2696 FAX: (214)424-6734

ATRIUM WINDOWS AND DOORS

PREPARED BY:

BUILDING DROPS, INC.

398 E. DANIA BEACH BLVD., STE. 338

PH: (954)399-9478

FAX: (954)744-8738

WEB: WWW.BUILDINGDROPS.COM

9001 AMBASSADOR ROW

DALLAS, TEXAS 75247

PH: (214)537-2696 FAX: (214)424-6734

ATRIUM WINDOWS AND DOORS

PREPARED BY:

BUILDING DROPS, INC.

398 E. DANIA BEACH BLVD., STE. 338

PH: (954)399-9478

FAX: (954)744-8738

WEB: WWW.BUILDINGDROPS.COM

9001 AMBASSADOR ROW

DALLAS, TEXAS 75247

PH: (214)537-2696 FAX: (214)424-6734

ATRIUM WINDOWS AND DOORS

PREPARED BY:

BUILDING DROPS, INC.

398 E. DANIA BEACH BLVD., STE. 338

PH: (954)399-9478

FAX: (954)744-8738

WEB: WWW.BUILDINGDROPS.COM

9001 AMBASSADOR ROW

DALLAS, TEXAS 75247

PH: (214)537-2696 FAX: (214)424-6734

ATRIUM WINDOWS AND DOORS

PREPARED BY:

BUILDING DROPS, INC.

398 E. DANIA BEACH BLVD., STE. 338

PH: (954)399-9478

FAX: (954)744-8738

WEB: WWW.BUILDINGDROPS.COM

9001 AMBASSADOR ROW

DALLAS, TEXAS 75247

PH: (214)537-2696 FAX: (214)424-6734

ATRIUM WINDOWS AND DOORS

PREPARED BY:

BUILDING DROPS, INC.

398 E. DANIA BEACH BLVD., STE. 338

PH: (954)399-9478

FAX: (954)744-8738

WEB: WWW.BUILDINGDROPS.COM

9001 AMBASSADOR ROW

DALLAS, TEXAS 75247

PH: (214)537-2696 FAX: (214)424-6734

ATRIUM WINDOWS AND DOORS

PREPARED BY:

BUILDING DROPS, INC.

398 E. DANIA BEACH BLVD., STE. 338

PH: (954)399-9478

FAX: (954)744-8738

WEB: WWW.BUILDINGDROPS.COM

9001 AMBASSADOR ROW

DALLAS, TEXAS 75247

PH: (214)537-2696 FAX: (214)424-6734

ATRIUM WINDOWS AND DOORS

PREPARED BY:

BUILDING DROPS, INC.

398 E. DANIA BEACH BLVD., STE. 338

PH: (954)399-9478

FAX: (954)744-8738

WEB: WWW.BUILDINGDROPS.COM

9001 AMBASSADOR ROW

DALLAS, TEXAS 75247

PH: (214)537-2696 FAX: (214)424-6734

ATRIUM WINDOWS AND DOORS

PREPARED BY:

BUILDING DROPS, INC.

398 E. DANIA BEACH BLVD., STE. 338

PH: (954)399-9478

FAX: (954)744-8738

WEB: WWW.BUILDINGDROPS.COM

9001 AMBASSADOR ROW

DALLAS, TEXAS 75247

PH: (214)537-2696 FAX: (214)424-6734

ATRIUM WINDOWS AND DOORS

PREPARED BY:

BUILDING DROPS, INC.

398 E. DANIA BEACH BLVD., STE. 338

PH: (954)399-9478

FAX: (954)744-8738

WEB: WWW.BUILDINGDROPS.COM

9001 AMBASSADOR ROW

DALLAS, TEXAS 75247

PH: (214)537-2696 FAX: (214)424-6734

ATRIUM WINDOWS AND DOORS

PREPARED BY:

BUILDING DROPS, INC.

398 E. DANIA BEACH BLVD., STE. 338

PH: (954)399-9478

FAX: (954)744-8738

WEB: WWW.BUILDINGDROPS.COM

9001 AMBASSADOR ROW

DALLAS, TEXAS 75247

PH: (214)537-2696 FAX: (214)424-6734

ATRIUM WINDOWS AND DOORS

PREPARED BY:

BUILDING DROPS, INC.

398 E. DANIA BEACH BLVD., STE. 338

PH: (954)399-9478

FAX: (954)744-8738

WEB: WWW.BUILDINGDROPS.COM

9001 AMBASSADOR ROW

DALLAS, TEXAS 75247

PH: (214)537-2696 FAX: (214)424-6734

ATRIUM WINDOWS AND DOORS

PREPARED BY:

BUILDING DROPS, INC.

398 E. DANIA BEACH BLVD., STE. 338

PH: (954)399-9478

FAX: (954)744-8738

WEB: WWW.BUILDINGDROPS.COM

9001 AMBASSADOR ROW

DALLAS, TEXAS 75247

PH: (214)537-2696 FAX: (214)424-6734

ATRIUM WINDOWS AND DOORS

PREPARED BY:

BUILDING DROPS, INC.

398 E. DANIA BEACH BLVD., STE. 338

PH: (954)399-9478

FAX: (954)744-8738

WEB: WWW.BUILDINGDROPS.COM

9001 AMBASSADOR ROW

DALLAS, TEXAS 75247

PH: (214)537-2696 FAX: (214)424-6734

ATRIUM WINDOWS AND DOORS

PREPARED BY:

BUILDING DROPS, INC.

398 E. DANIA BEACH BLVD., STE. 338

PH: (954)399-9478

FAX: (954)744-8738

WEB: WWW.BUILDINGDROPS.COM

9001 AMBASSADOR ROW

DALLAS, TEXAS 75247

PH: (214)537-2696 FAX: (214)424-6734

ATRIUM WINDOWS AND DOORS

PREPARED BY:

BUILDING DROPS, INC.

398 E. DANIA BEACH BLVD., STE. 338

PH: (954)399-9478

FAX: (954)744-8738

WEB: WWW.BUILDINGDROPS.COM

9001 AMBASSADOR ROW

DALLAS, TEXAS 75247

PH: (214)537-2696 FAX: (214)424-6734

ATRIUM WINDOWS AND DOORS

PREPARED BY:

BUILDING DROPS, INC.

398 E. DANIA BEACH BLVD., STE. 338

PH: (954)399-9478

FAX: (954)744-8738

WEB: WWW.BUILDINGDROPS.COM

9001 AMBASSADOR ROW

DALLAS, TEXAS 75247

PH: (214)537-2696 FAX: (214)424-6734

ATRIUM WINDOWS AND DOORS

PREPARED BY:

BUILDING DROPS, INC.

398 E. DANIA BEACH BLVD., STE. 338

PH: (954)399-9478

FAX: (954)744-8738

WEB: WWW.BUILDINGDROPS.COM

9001 AMBASSADOR ROW

DALLAS, TEXAS 75247

PH: (214)537-2696 FAX: (214)424-6734

ATRIUM WINDOWS AND DOORS

PREPARED BY:

BUILDING DROPS, INC.

398 E. DANIA BEACH BLVD., STE. 338

PH: (954)399-9478

FAX: (954)744-8738

WEB: WWW.BUILDINGDROPS.COM

9001 AMBASSADOR ROW

DALLAS, TEXAS 75247

PH: (214)537-2696 FAX: (214)424-6734

ATRIUM WINDOWS AND DOORS

PREPARED BY:

BUILDING DROPS, INC.

398 E. DANIA BEACH BLVD., STE. 338

PH: (954)399-9478

FAX: (954)744-8738

WEB: WWW.BUILDINGDROPS.COM

9001 AMBASSADOR ROW

DALLAS, TEXAS 75247

PH: (214)537-2696 FAX: (214)424-6734

ATRIUM WINDOWS AND DOORS

PREPARED BY:

BUILDING DROPS, INC.

398 E. DANIA BEACH BLVD., STE. 338

PH: (954)399-9478

FAX: (954)744-8738

WEB: WWW.BUILDINGDROPS.COM

9001 AMBASSADOR ROW

DALLAS, TEXAS 75247

PH: (214)537-2696 FAX: (214)424-6734

ATRIUM WINDOWS AND DOORS

PREPARED BY:

**PREPARED BY:**  
BUILDING DROPS, INC.  
398 E. DANIA BEACH BLVD, STE. 338  
DANIA BEACH, FL 33004  
PH: (954)399-9478  
FAX: (954)744-8738  
WEB: www.buildingdrops.com

**TITLE:**  
SERIES 130  
SINGLE HUNG WINDOW

**ANCHOR LAYOUTS - THROUGH FRAME**

**REMARKS**

BY DATE

A-FBC 5th ED. CODE CHANGE SM 06.03.14

B-CERT AGENCY UPDATE LS 02.27.17

C-FBC 2017 CODE CHANGE AG 10.03.17

D-ALUMINUM SUBSTRATE YC 04.16.20

THE INSTALLATION DETAILS DESCRIBED HEREIN ARE GENERIC AND NOT INTENDED TO BE USED FOR A SPECIFIC SITE. IF SITE CONDITIONS VARY FROM THE REQUIREMENTS DETAILED HEREIN, A LICENSED ENGINEER OR ARCHITECT SHALL PROVIDE THE APPROPRIATE DOCUMENTS FOR THE WINDOW MANUFACTURER.



HERMES F. NORENO, P.E.  
FLORIDA REG. NO. 73778  
BUILDING PROPS, INC.  
398 E. DANIA BEACH, FL 33004  
BPRF CERT. OF AUTHORIZATION NO. 29578

FL #: **FL20100**

DATE: **01.02.2020**

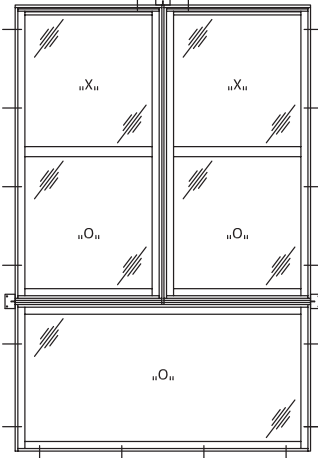
DWG. BY: **YC** CHK. BY: **HFN**

SCALE: **NTS**

DWG. #: **ATR113**

SECTION:

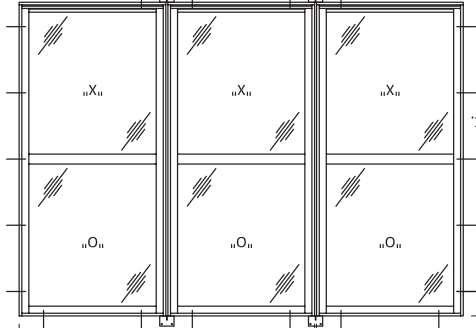
6" FROM CORNER HEAD/SILL, TYP.



**ANCHOR LAYOUT**

TWIN SINGLE HUNG W/ TRANSOM - THROUGH FRAME

6" FROM CORNER HEAD/SILL, TYP.

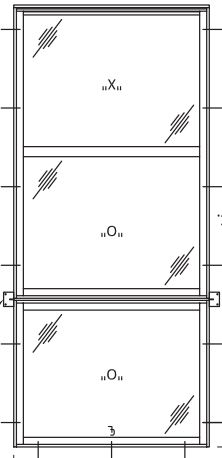


**ANCHOR LAYOUT**

MULLED TRIPLE SINGLE HUNG - THROUGH FRAME

(2) INSTALLATION ANCHORS THROUGH MULL CLIPS PER INSTALLATION NOTES 5-7, SHEET 1.

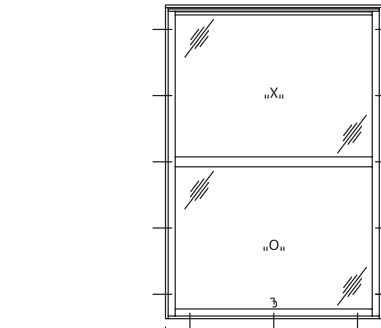
6" FROM CORNER HEAD/SILL, TYP.



**ANCHOR LAYOUT**

SINGLE HUNG W/ TRANSOM - THROUGH FRAME

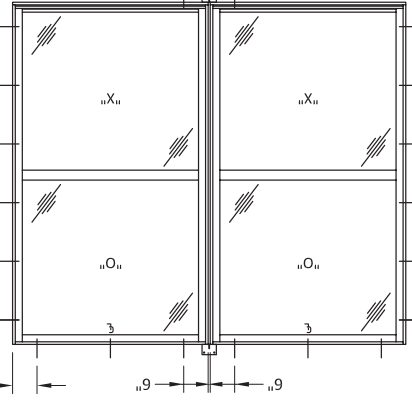
6" FROM CORNER HEAD/SILL, TYP.



**ANCHOR LAYOUT**

SINGLE HUNG - THROUGH FRAME

6" FROM CORNER HEAD/SILL, TYP.

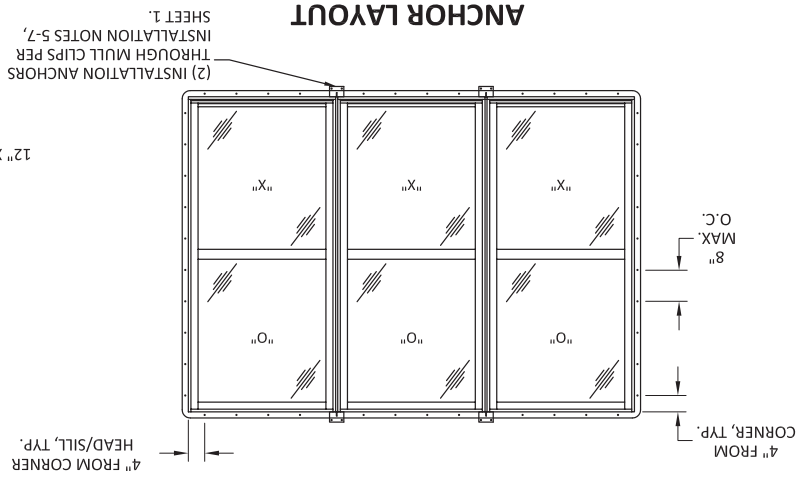


**ANCHOR LAYOUT**

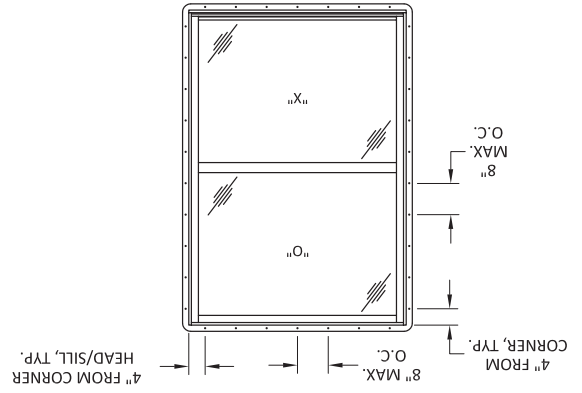
MULLED TWIN SINGLE HUNG - THROUGH FRAME

(2) INSTALLATION ANCHORS THROUGH MULL CLIPS PER INSTALLATION NOTES 5-7, SHEET 1.

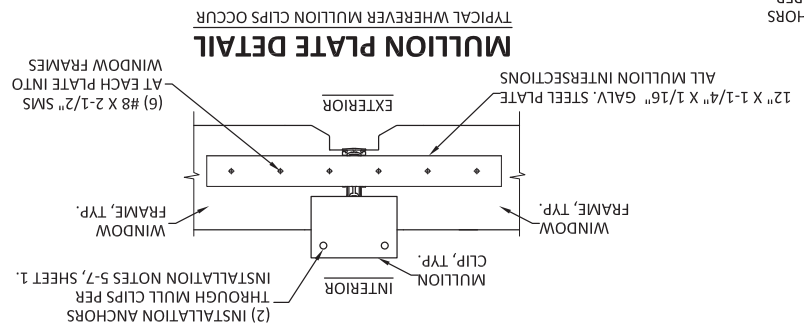
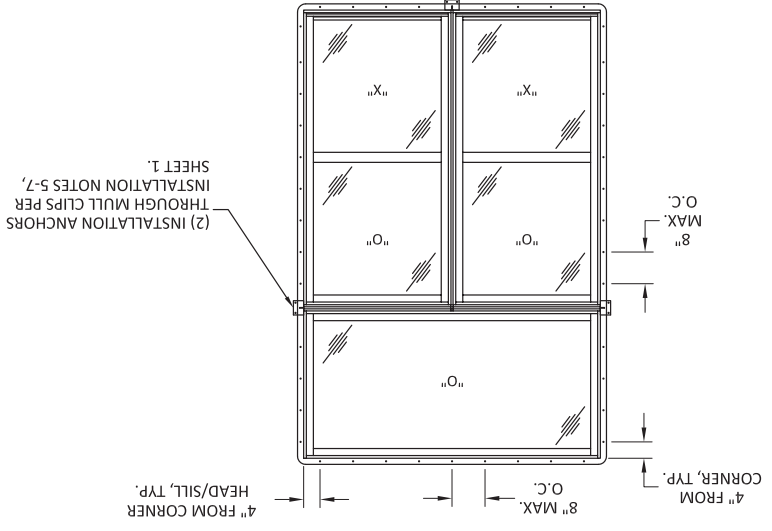
**ANCHOR LAYOUT**  
TYP. FOR TWIN & TRIPLE MULLED UNITS - THROUGH FIN



**ANCHOR LAYOUT**  
SINGLE HUNG - THROUGH FIN

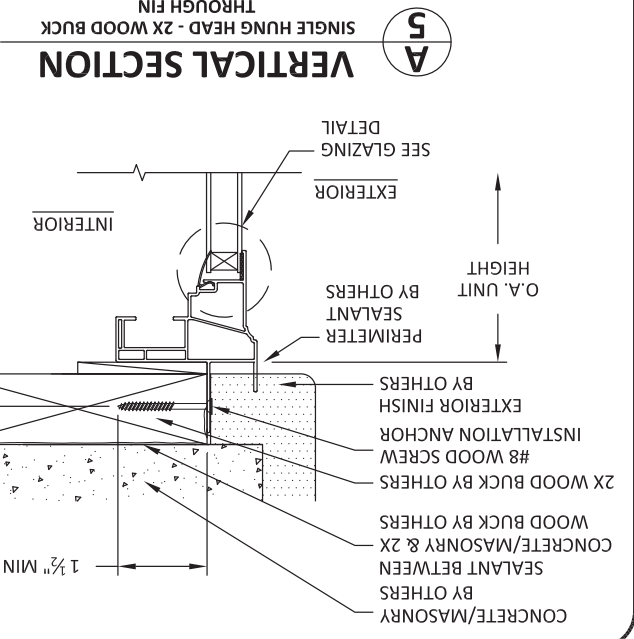
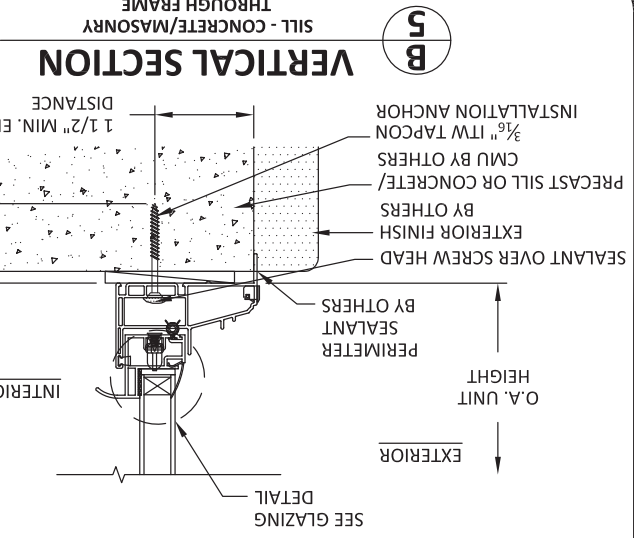


**ANCHOR LAYOUT**  
TYP. FOR ALL SINGLE AND DOUBLE MULLED UNITS WITH TRANSOM - THROUGH FIN



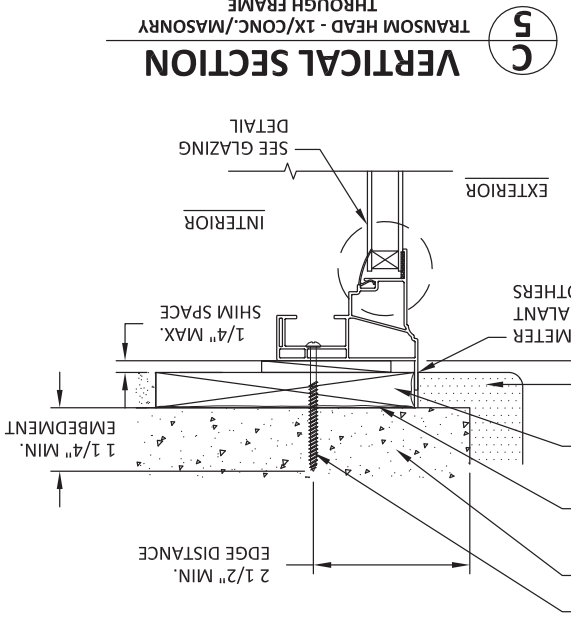
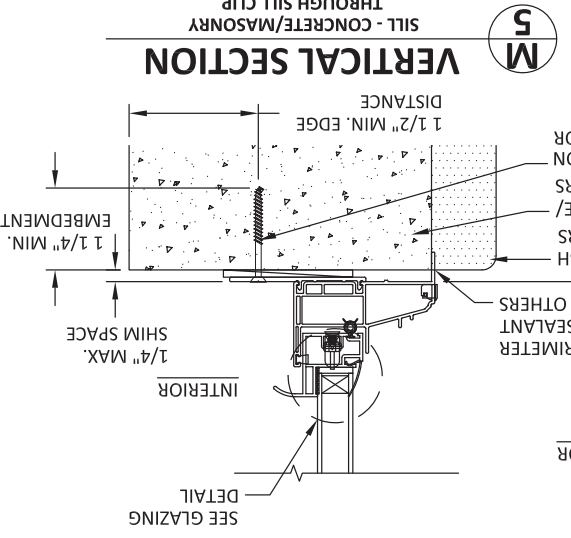
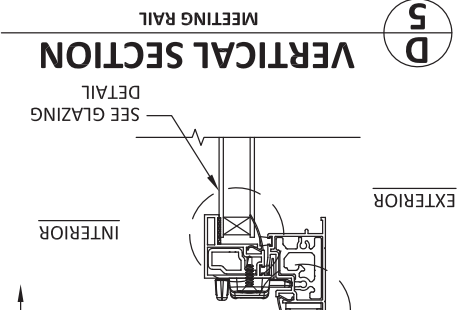
**MULLION PLATE DETAIL**  
TYPICAL WHEREVER MULLION CLIPS OCCUR

<p>9001 AMBASSADOR ROW DALLAS, TEXAS 75247 PH: (214)537-2696 FAX: (214)424-6734</p>											
<p>PREPARED BY:  <b>BUILDING DROPS, INC.</b>                  398 E. DANIA BEACH BLVD., STE. 338                  DANIA BEACH, FL 33004                  PH: (954)399-9478                  FAX: (954)744-8738                  WEB: www.buildingdrops.com</p>											
<p>TITLE:                  SERIES 130                  SINGLE HUNG WINDOW                  ANCHOR LAYOUTS (THROUGH FIN)</p>											
<p>REMARKS</p> <table border="1"> <tr> <th>BY</th> <th>DATE</th> </tr> <tr> <td>SM</td> <td>06.03.14</td> </tr> <tr> <td>LS</td> <td>02.27.17</td> </tr> <tr> <td>AG</td> <td>10.03.17</td> </tr> <tr> <td>YC</td> <td>04.16.20</td> </tr> </table> <p>THE INSTALLATION DETAILS DESCRIBED HEREIN ARE GENERIC AND MAY NOT REFLECT ACTUAL CONDITIONS FOR A SPECIFIC SITE. IF SITE CONDITIONS VARY, CONSULT WITH THE ARCHITECT OR ARCHITECTURAL ENGINEER ON ANY CHANGES TO THESE DOCUMENTS FOR THE PROJECT.</p>		BY	DATE	SM	06.03.14	LS	02.27.17	AG	10.03.17	YC	04.16.20
BY	DATE										
SM	06.03.14										
LS	02.27.17										
AG	10.03.17										
YC	04.16.20										
<p>HERMES F. NOBRE, P.E.                  398 E. DANIA BEACH BLVD., STE. 338                  DANIA BEACH, FL 33004                  BUILDING PROPS, INC.                  AND FLORIDA P.E. NO. 73778                  HERMES F. NOBRE, P.E.                  FBPE CERT. OF AUTHORIZATION NO. 29576</p>											
FL #:	FL20100										
DATE:	01.02.2020										
DWG. BY:	YC										
CHK. BY:	HFN										
SCALE:	NTS										
DWG. #:	ATR113										
SECTION:	OF 7										



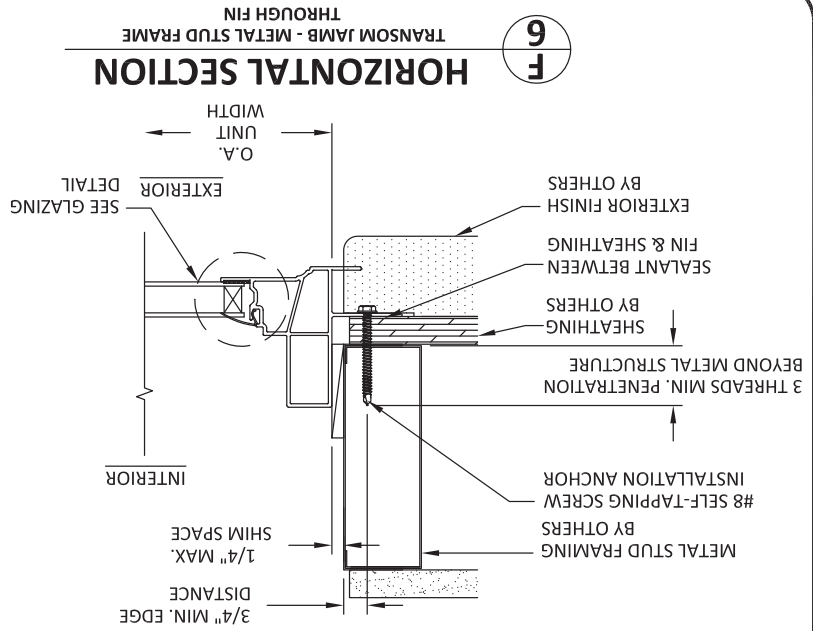
**NOTES:**

1. SILL ANCHORS ARE FOR FACTORY MULLED UNITS
2. USE (1) SILL CLIP PER ANCHOR LOCATION. SILL CLIPS ARE TO BE USED IN MINIMUM 1 1/4" LENGTHS.
3. ONLY, SEE SHEET 3.

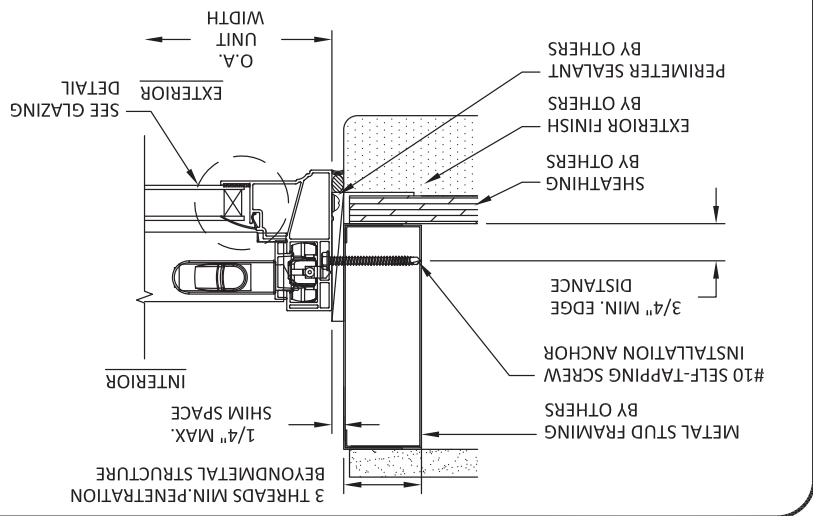


<b>ATRIUM WINDOWS AND DOORS</b>		9001 AMBASSADOR ROW DALLAS, TEXAS 75247 PH: (214)537-2696 FAX: (214)242-6734	
<b>VERTICAL SECTIONS</b>		PREPARED BY: <b>BUILDING DROPS, INC.</b> 398 E. DANIA BEACH BLVD, ST. 338 DANIA BEACH, FL 33004 PH: (954)939-9478 FAX: (954)744-8238 WEB: www.buildingdrops.com	
TITLE: <b>SERIES 130 SINGLE HUNG WINDOW</b>		REMARKS	
BY	DATE	A-FBC 5th ED. CODE CHANGE	SM 06.03.14
B-CERT AGENCY UPDATE	LS 02.27.17	C-FBC 2017 CODE CHANGE	AG 10.03.17
D-ALUMINUM SUBSTRATE	YC 04.16.20	FROM THE REQUIREMENTS DETAILED HEREIN, A LICENSED ENGINEER OR ARCHITECT SHALL PREPARE SITE SPECIFIC DOCUMENTS FOR USE WITH THIS DOCUMENT.	
FL #:		DATE: 01.02.2020	
DWG. BY: YC		SCALE: NTS	
CHK. BY: HFN		DWG. #: ATR113	
SECTION:		OF 7	

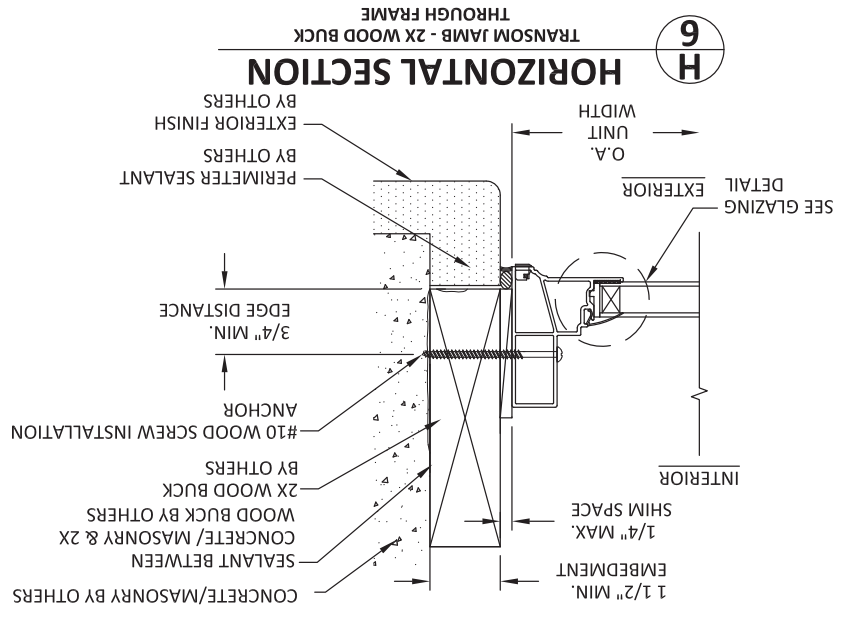




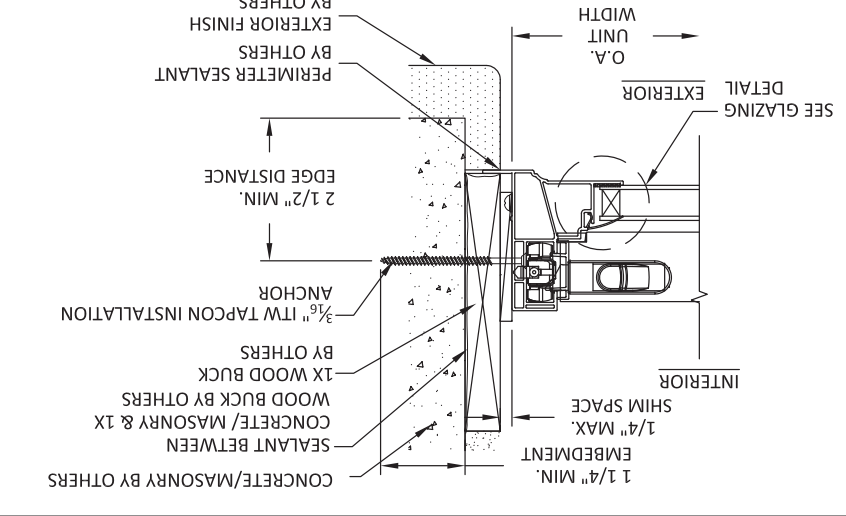
**F** HORIZONTAL SECTION  
 SINGLE HUNG JAMB - METAL STUD FRAME THROUGH FRAME



**E** HORIZONTAL SECTION  
 SINGLE HUNG JAMB - METAL STUD FRAME THROUGH FRAME



**H** HORIZONTAL SECTION  
 TRANSOM JAMB - 2X WOOD BUCK THROUGH FRAME



**G** HORIZONTAL SECTION  
 SINGLE HUNG JAMB - 1X WOOD/CONC./MASONRY THROUGH FRAME

**FL20100**

DATE: 01.02.2020

DWG. BY: YC    CHK. BY: HFN

SCALE: NTS

DWG. #: ATR113

SECTION:

OF 7

**9**

FL #: FL20100

DATE: 01.02.2020

DWG. BY: YC    CHK. BY: HFN

SCALE: NTS

DWG. #: ATR113

SECTION:

HERMES NORRHO, P.E.

FLORIDA P.E. NO. 7378

BUILDING PROPS, INC.

398 DANIA BEACH BLVD., STE. 338

DANIA BEACH, FL 33004

BRFC CERT. OF AUTHORIZATION NO. 29578

PROFESSIONAL ENGINEER

STATE OF FLORIDA

NO. 7378

HERMES NORRHO, P.E.

THE INSTALLATION DETAILS DESCRIBED HEREIN ARE GENERAL AND NOT INTENDED TO BE A COMPLETE AND ACCURATE REPRESENTATION OF THE ACTUAL CONDITIONS FOR A SPECIFIC SITE. IF SITE CONDITIONS DIFFER FROM THE REQUIREMENTS DETAILED HEREIN, A LICENSED ENGINEER OR ARCHITECT SHALL PREPARE THE SITE SPECIFIC DOCUMENTS FOR THE PROJECT WITH THIS DOCUMENT.

REMARKS	BY	DATE
A-FRC 5th ED. CODE CHANGE	SM	06.03.14
B-CERT AGENCY UPDATE	LS	02.27.17
C-FRC 2017 CODE CHANGE	AG	10.03.17
D-ALUMINIUM SUBSTRATE	YC	04.16.20

TITLE: **SERIES 130**

**SINGLE HUNG WINDOW**

HORIZONTAL SECTIONS

PREPARED BY: **BUILDING DROPS, INC.**

398 E. DANIA BEACH BLVD., STE. 338  
 DANIA BEACH, FL 33004  
 PH: (954)399-9478  
 FAX: (954)744-8738  
 WEB: www.buildingdrops.com

PH: (214)537-2696    FAX: (214)244-6734

9001 AMBASSADOR ROW  
 DALLAS, TEXAS 75247

**ATRIUM WINDOWS AND DOORS**



9001 AMBASSADOR ROW  
DALLAS, TEXAS 75247  
PH: (214)537-2696 FAX: (214)424-6734

**TITLE:**  
SERIES 130  
SINGLE HUNG WINDOW  
MULLION DETAILS AND GLAZING DETAIL

**PREPARED BY:**  
BUILDING DROPS, INC.  
398 E. DANIA BEACH BLVD., STE. 338  
DANIA BEACH, FL 33004  
PH: (954)399-9478  
FAX: (954)744-4738  
WEB: www.buildingdrops.com

**REMARKS**

BY	DATE
SM	06.03.14
LS	02.27.17
AG	10.03.17
YC	04.16.20

THE INSTALLATION DETAILS DESCRIBED HEREIN ARE GENERIC AND MAY NOT REFLECT ACTUAL CONDITIONS TO OCCUR AT THE SITE. IF SITE CONDITIONS DETAILED HEREIN ARE LICENSED FROM THE REQUIREMENTS OF ASTM E 1300 GLASS CHARTS AND SAFETY GLAZING REQUIREMENTS OF FBC CHAPTER 24

ENGINEER OR ARCHITECT SHALL PROVIDE THE SITE SPECIFIC DOCUMENTS FOR THE WINDOW WITH THIS DOCUMENT.



HERMES F. NORERO, P.E.  
AND LICENSE NO. 73778  
BUILDING DROPS, INC.  
398 E. DANIA BEACH BLVD., STE. 338  
DANIA BEACH, FL 33004  
FLPRF CERT. OF AUTHORIZATION NO. 29576

FL #: **FL20100**

DATE: 01.02.2020

DWG. BY: YC  
CHK. BY: HFN

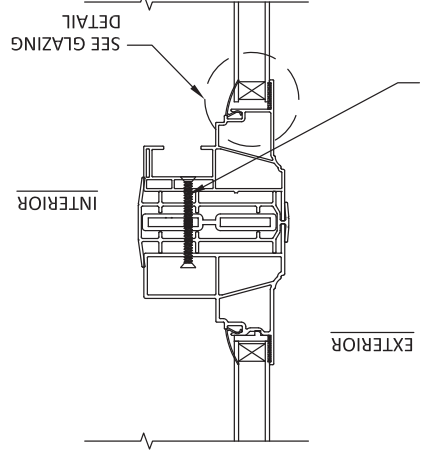
SCALE: NTS

DWG. #: ATR113

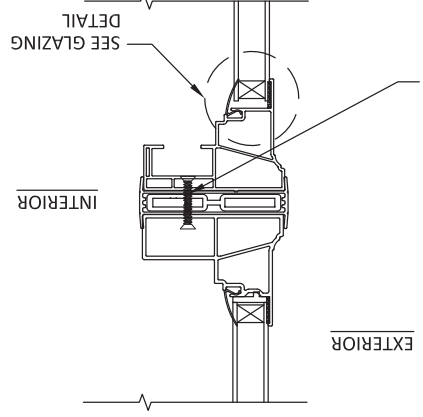
SECTION:

OF 7

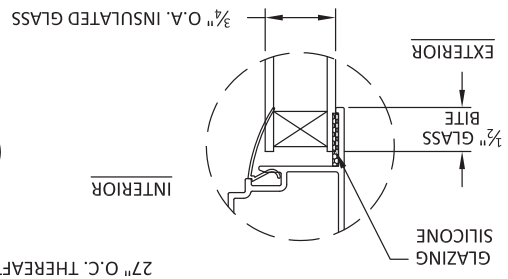
**7 L** 1 1/4" HORIZONTAL MULLION (OPTIONAL)  
**VERTICAL SECTION**



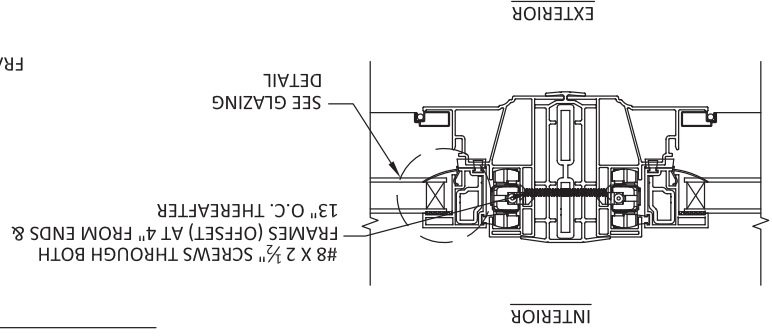
**7 K** 1/2" HORIZONTAL MULLION  
**VERTICAL SECTION**



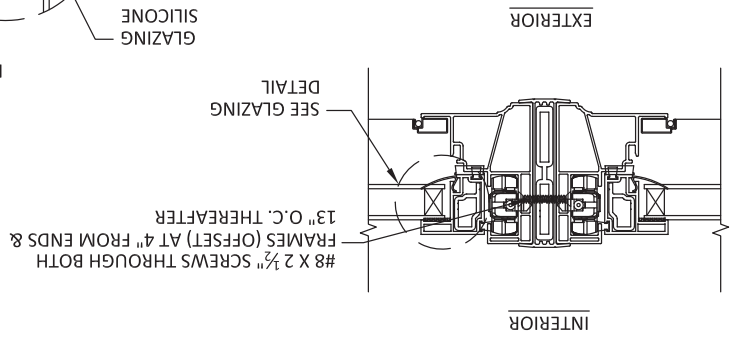
**GLAZING DETAIL**



**7 J** 1 1/4" VERTICAL MULLION (OPTIONAL)  
**HORIZONTAL SECTION**



**7 I** 1/2" VERTICAL MULLION  
**HORIZONTAL SECTION**



**NOTE:**  
GLASS TYPE & THICKNESS SHALL MEET THE REQUIREMENTS OF ASTM E 1300 GLASS CHARTS AND SAFETY GLAZING REQUIREMENTS OF FBC CHAPTER 24



**Product Approval**  
USER: Public User



[Product Approval Menu](#) > [Product or Application Search](#) > [Application List](#)

OFFICE OF THE SECRETARY

**Search Criteria**

[Refine Search](#)

Code Version	2020	FL#	20100.2
Application Type	ALL	Product Manufacturer	ALL
Category	ALL	Subcategory	ALL
Application Status	ALL	Compliance Method	ALL
Quality Assurance Entity	ALL	Quality Assurance Entity Contract Expired	ALL
Product Model, Number or Name	ALL	Product Description	ALL
Approved for use in HVHZ	ALL	Approved for use outside HVHZ	ALL
Impact Resistant	ALL	Design Pressure	ALL
Other	ALL		

**Search Results - Applications**

FL#	Type	Manufacturer	Validated By	Status
<a href="#">FL20100-R11</a> <a href="#">History</a>	Affirmation	Atrium Windows & Doors FL#: FL20100.2 Model: Series 130 Single Hung Window Description: Single Hung Window Category: Windows Subcategory: Single Hung	National Accreditation & Management Institute (804) 684-5124	Approved

\*Approved by DBPR. Approvals by DBPR shall be reviewed and ratified by the POC and/or the Commission if necessary.

Contact Us :: 2601 Blair Stone Road, Tallahassee FL 32399 Phone: 850-487-1824

The State of Florida is an AA/EEO employer. Copyright 2007-2013 State of Florida. :: [Privacy Statement](#) :: [Accessibility Statement](#) :: [Refund Statement](#)

Under Florida law, email addresses are public records. If you do not want your e-mail address released in response to a public-records request, do not send electronic mail to this entity. Instead, contact the office by phone or by traditional mail. If you have any questions, please contact 850.487.1395. \*Pursuant to Section 455.275(1), Florida Statutes, effective October 1, 2012, licensees licensed under Chapter 455, F.S. must provide the Department with an email address if they have one. The emails provided may be used for official communication with the licensee. However email addresses are public record. If you do not wish to supply a personal address, please provide the Department with an email address which can be made available to the public. To determine if you are a licensee under Chapter 455, F.S., please click [here](#).

**Product Approval Accepts:**



FL # FL20100-R11

Application Type Affirmation

Code Version 2020

Application Status Approved

Comments

Archived

Product Manufacturer

Address/Phone/Email

Atrium Windows & Doors  
 300 Welcome Center Blvd.  
 Welcome, NC 27374  
 (800) 542-9118 Ext 413596  
 luanne.harris@cornerstone-bb.com

Authorized Signature

Harris Luanne  
 luanne.harris@cornerstone-bb.com

Technical Representative

Address/Phone/Email

Quality Assurance Representative

Address/Phone/Email

Luanne Harris  
 300 Welcome Center Blvd.  
 Welcome, NC 27374  
 (800) 542-9118 Ext 413596  
 luanne.harris@cornerstone-bb.com

Category

Subcategory

Windows

Single Hung

Compliance Method

Certification Mark or Listing

Certification Agency

Validated By

National Accreditation & Management Institute  
 National Accreditation & Management Institute

Referenced Standard and Year (of Standard)

**Standard**

AAMA 450

AAMA/WDMA/CSA 101/I.S.2/A440

AAMA/WDMA/CSA 101/I.S.2/A440

**Year**

2010

2011

2008

Equivalence of Product Standards

Certified By

I affirm that there are no changes in the new Florida Building Code which affect my product(s) and my product(s) are in compliance with the new Florida Building Code.

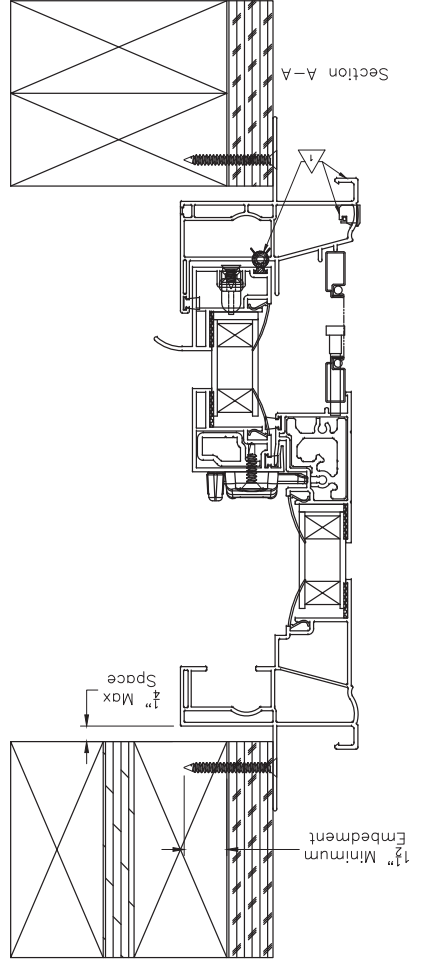
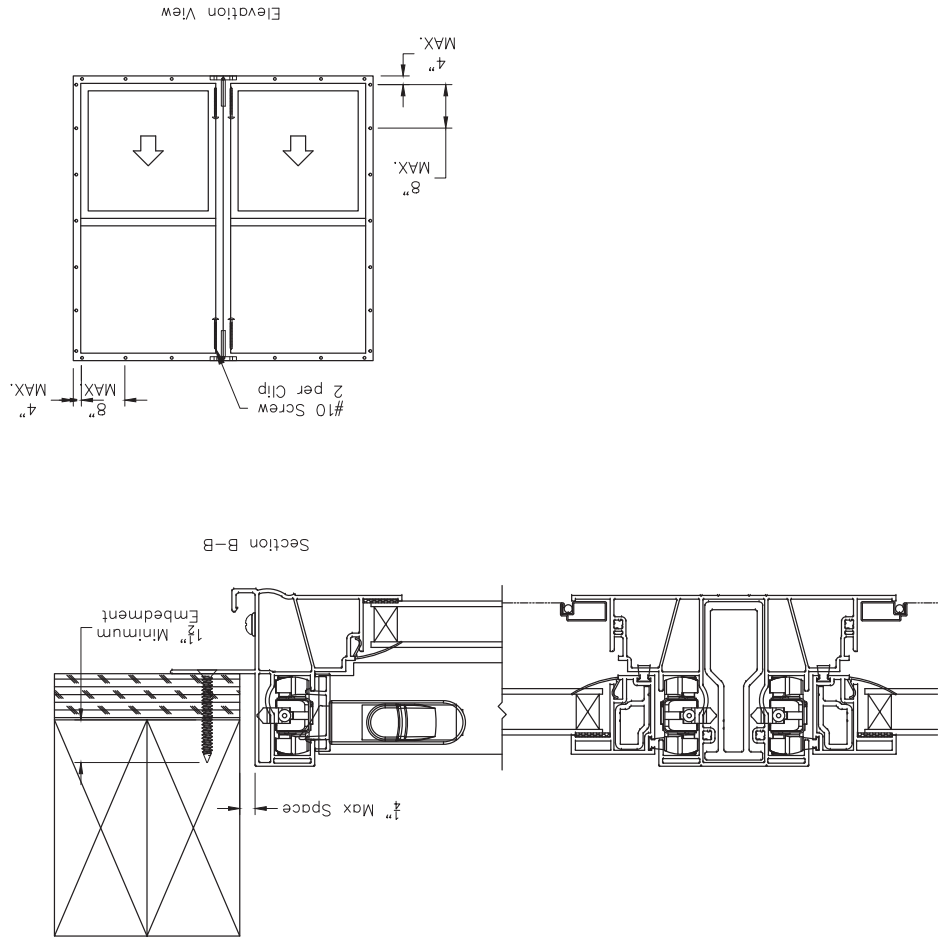
Documentation from approved Evaluation or Validation Entity  Yes  No  N/A

ECON# (Initial Issue): 2008-1369		File Name: ADW-01 120 SH ASSY		Sheet 5/8	
Material (Type-Alloy-Temper):		Est. Weight (lb/H): NA		Tolerances: XXX = ±.XXX XXX = ±.XXX	
Drawn By: CRA		Approved By: ---		Date: 9-14-2009	
Scale: 1:2		Sheet Size: ANSI B		Sheet 5/8	
Title: Atrium Series 120/130 Single Hung Continuous Head and Sill New Construction Installation Drawing					
<b>ATRUM</b> C O M P A N I E S , I N C.					
THIS DRAWING IS PROPRIETARY AND CONFIDENTIAL TO ATRUM COMPANIES, INC. AND SHALL NOT BE REPRODUCED, COPIED, OR DISSEMINATED WITHOUT THE EXPRESSED WRITTEN PERMISSION OF ATRUM COMPANIES, INC.					
No.	Date	Revision Description	By	ECON #	
3	5/22/2013	Removed "85" from series name. Updated file name.	JTS	---	

- NOTES:
- INSTALLATIONS SHOWN ON THIS DRAWING HAVE BEEN VERIFIED AS THE AS-TESTED INSTALLATION FOR THE PERFORMANCE LEVEL SHOWN. VERIFIED PRODUCTS ARE LISTED IN TABLE 1. THIS DRAWING APPLIES ONLY TO THOSE PRODUCTS.
  - INSTALLATION ANCHORS SHALL BE #8 SCREWS OF SUFFICIENT LENGTH TO ACHIEVE MINIMUM EMBEDMENT OF 1-1/2" INTO WOOD FRAMING MEMBER. WOOD SCREWS SHALL SATISFY NATIONAL DESIGN SPECIFICATION FOR MATERIAL PROPERTIES AND DIMENSIONS. EDGE DISTANCES SHALL BE MINIMUM 3/8" PER CURRENT NDS.
  - WOOD FRAMING SHALL BE SPRUCE-PINE-FIR (G=0.42) OR DENSER.
  - INSTALLATION ANCHORS SHALL BE LOCATED WITHIN 1/2" OF THE SPECIFIED LOCATION.
  - MAXIMUM SHIM SPACE SHALL BE 1/4". SPACES GREATER THAN 1/16" REQUIRE LOAD BEARING SHIMS.
  - INSTALLATION ANCHORS ARE SHOWN GOING THROUGH EXTERIOR FINISH. ANCHORS MAY BE INSTALLED DIRECTLY INTO WOOD FRAMING MEMBER WITH 1-1/2" MINIMUM EMBEDMENT STILL REQUIRED. EDGE DISTANCES SHALL BE MINIMUM 3/8" PER CURRENT NDS.
  - INSTALLATION ANCHORS SHALL BE LOCATED 2" FROM CORNERS AND 8" MAXIMUM ON CENTER SPACING. THESE INSTRUCTIONS ADDRESS STRUCTURAL REQUIREMENTS ONLY. WINDOWS SHALL BE INSTALLED PER ASTM E2112 OR FMA/AAMA 100.
  - SMALLER WINDOWS OF THE SAME CONSTRUCTION AND EQUAL OR LESSER DESIGN PRESSURES ARE COVERED BY THIS DRAWING.
  - GLAZING TYPE, GLASS TYPE, AND GLASS THICKNESS ARE ESTABLISHED BY THE CERTIFICATION AND SHALL SATISFY ASTM E1300. GLAZING TYPE SHALL BE INSULATING GLASS.
  - PRODUCTS LISTED IN TABLE 1 ARE NOT IMPACT RESISTANT. IF USED IN WIND-BORNE DEBRIS REGIONS, APPROVED PROTECTION DEVICES ARE REQUIRED.
  - PRODUCT OR INSTALLATION IS NOT APPROVED FOR HIGH VELOCITY HURRICANE ZONE (HVHZ).

Table 1 - Verified Installations

Config.	DP (psf)	WIDTH (in)	HEIGHT (in)
Twin	+/- 35	96	84
Triple	+/- 50	108	72
Triple	+/- 35	108	84



# ATRIUM CORPORATION

## SERIES 130 1.25" TUBE MULLION (NON-HVHZ)(NON-IMPACT)



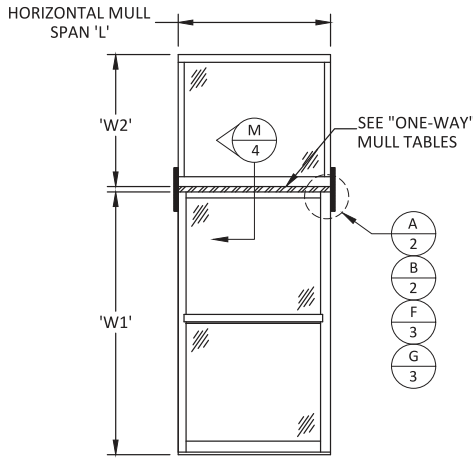
9001 AMBASSADOR ROW  
DALLAS, TEXAS 75247  
PH: (214)637-2696 FAX: (214)424-6734

**GENERAL NOTES:**

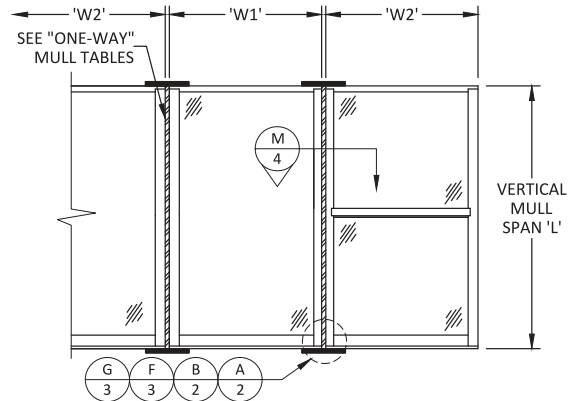
1. THE PRODUCT SHOWN HEREIN IS DESIGNED AND MANUFACTURED TO COMPLY WITH THE CURRENT FLORIDA BUILDING CODE (FBC), **EXCLUDING** HVHZ, AND HAVE BEEN EVALUATED TO 7TH EDITION (2020) FLORIDA BUILDING CODE, SECTION 1709.8.
2. ADEQUACY OF THE EXISTING STRUCTURAL CONCRETE/MASONRY AND 2X FRAMING AS A MAIN WIND FORCE RESISTING SYSTEM CAPABLE OF WITHSTANDING AND TRANSFERRING APPLIED PRODUCT LOADS TO THE FOUNDATION IS THE RESPONSIBILITY OF THE ENGINEER OR ARCHITECT OF RECORD FOR THE PROJECT OF INSTALLATION.
3. 1X AND 2X BUCKS (WHEN USED) SHALL BE DESIGNED AND ANCHORED TO PROPERLY TRANSFER ALL LOADS TO THE STRUCTURE. BUCK DESIGN AND INSTALLATION IS THE RESPONSIBILITY OF THE ENGINEER OR ARCHITECT OF RECORD FOR THE PROJECT OF INSTALLATION.
4. THE INSTALLATION DETAILS DESCRIBED HEREIN ARE GENERIC AND MAY NOT REFLECT ACTUAL CONDITIONS FOR A SPECIFIC SITE. IF SITE CONDITIONS CAUSE INSTALLATION TO DEVIATE FROM THE REQUIREMENTS DETAILED HEREIN, A LICENSED ENGINEER OR ARCHITECT SHALL PREPARE SITE SPECIFIC DOCUMENTS FOR USE WITH THIS DOCUMENT IN NON-HVHZ AREAS.
5. APPROVED IMPACT PROTECTIVE SYSTEM **IS REQUIRED** ON THIS PRODUCT IN AREAS REQUIRING IMPACT RESISTANCE.
6. MULLION & CLIP MATERIAL: ALUMINUM 6063-T6
7. SEE SHEETS 5-8 FOR INSTALLATION ANCHOR REQUIREMENTS FOR SPECIFIC MULLION CONFIGURATIONS AND DESIGN LOAD CAPACITIES.
8. IN ACCORDANCE WITH THE CURRENT FBC, DISSIMILAR METALS INCLUDING FASTENERS THAT MAY COME INTO CONTACT WITH ALUMINUM UNIT FRAMING SHALL BE PROTECTED AS DEFINED IN CHAPTER 20.
9. INSTALLATION ANCHOR CAPACITIES FOR PRODUCTS HEREIN ARE BASED ON SUBSTRATE MATERIALS WITH THE FOLLOWING PROPERTIES:
  - A. WOOD - MINIMUM SPECIFIC GRAVITY OF 0.42.
  - B. CONCRETE - MINIMUM COMPRESSIVE STRENGTH OF 3000 PSI.
  - C. GROUT-FILLED CMU - UNIT STRENGTH CONFORMS TO ASTM C-90 WITH MINIMUM GROUT COMPRESSIVE STRENGTH OF 2000 PSI AND GROUT CONFORMS TO ASTM C 476, MINIMUM GROUT COMPRESSIVE STRENGTH OF 2000 PSI.
  - D. HOLLOW BLOCK CMU - UNIT STRENGTH CONFORMS TO ASTM C-90 WITH MINIMUM COMPRESSIVE STRENGTH OF 2000 PSI.
  - E. STEEL - MINIMUM YIELD STRENGTH OF 33 KSI. MINIMUM 18 GA. WALL THICKNESS.

$$\text{TRIBUTARY WIDTH} = \frac{W1 + W2}{2}$$

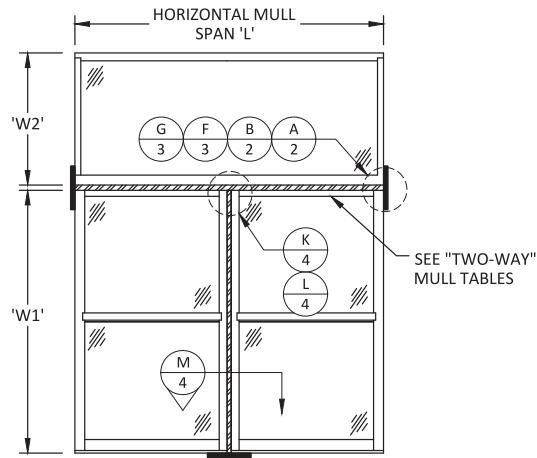
TABLE OF CONTENTS	
SHEET	SHEET DESCRIPTION
1	INSTALLATION, GENERAL NOTES & ELEVATIONS
2	MULLION DETAILS (STANDARD CLIP)
3	MULLION DETAILS (OFFSET CLIP)
4	TWO-WAY DETAILS & FRAME DETAIL
5	ONE-WAY MULL TABLES (TAPCONS ONLY)
6	ONE-WAY MULL TABLES (ALL OTHER ANCHORS)
7	TWO-WAY MULL TABLES (TAPCONS ONLY)
8	TWO-WAY MULL TABLES (ALL OTHER ANCHORS)



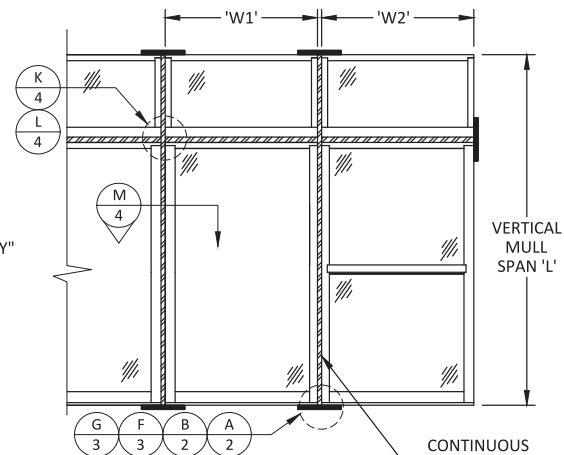
**HORIZONTAL SPAN**



**VERTICAL SPAN**



**HORIZONTAL "T" MULL SPAN**



**VERTICAL SPAN**

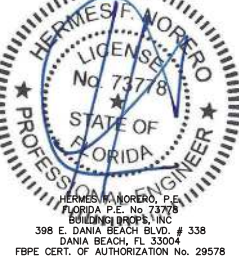
TITLE: 130 1.25" TUBE MULLION VERTICAL & HORIZONTAL (NON-HVHZ)(NON-IMPACT) INSTALLATION, GENERAL NOTES & ELEVATIONS

PREPARED BY: BUILDING DROPS, INC.  
398 E. DANIA BEACH BLVD., STE. 338  
DANIA BEACH, FL 33004  
PH: (954)244-4738  
FAX: (954)244-4738  
WEB: www.buildingdrops.com

REMARKS	BY	DATE
FBC 5th ED. CODE CHANGE	SM	06.03.14
ADDITIONAL SIZING	LS	04.14.16
FBC 2017 CODE CHANGE	AG	10.03.17
FBC 2020 CODE CHANGE	LL	11.11.20

THIS DOCUMENT IS THE PROPERTY OF BUILDING DROPS, INC. AND SHALL NOT BE REPRODUCED IN WHOLE OR PART WITHOUT WRITTEN CONSENT OF BUILDING DROPS, INC. ALTERATIONS, ADDITIONS, HIGHLIGHTING, OR OTHER MARKINGS TO THIS DOCUMENT ARE NOT PERMITTED AND INVALIDATE OUR CERTIFICATION.

Digitally signed by Hermes F Norero  
Reason: I am approving this document  
Date: 2020.11.18 15:40:58 -0500



FL #:  
**FL22377**

DATE: **10.03.17**

DWG. BY: **AR/AG** CHK. BY: **HFN**

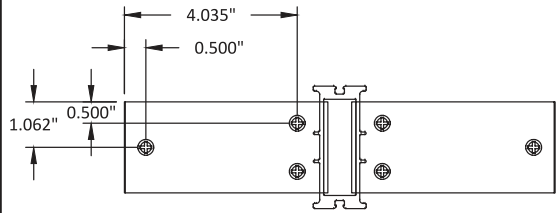
SCALE: **NTS**

DWG. #: **ATR110**

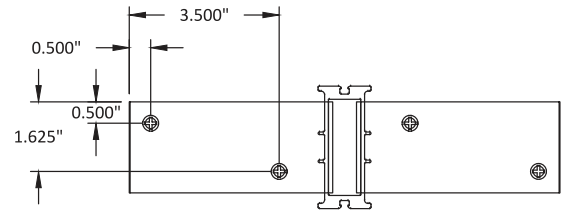
SECTION:  
**1**

OF 8

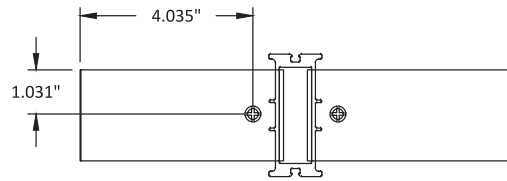
11/12/2020 5:19 PM



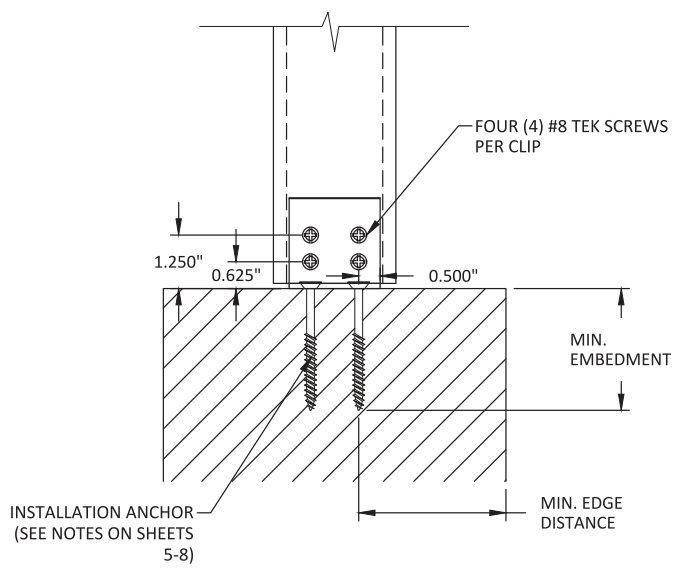
**C**  
**2** **TOP VIEW**  
END CLIP DETAIL WITH HOLE LAYOUT  
WOOD OR STEEL STUD INSTALLATION



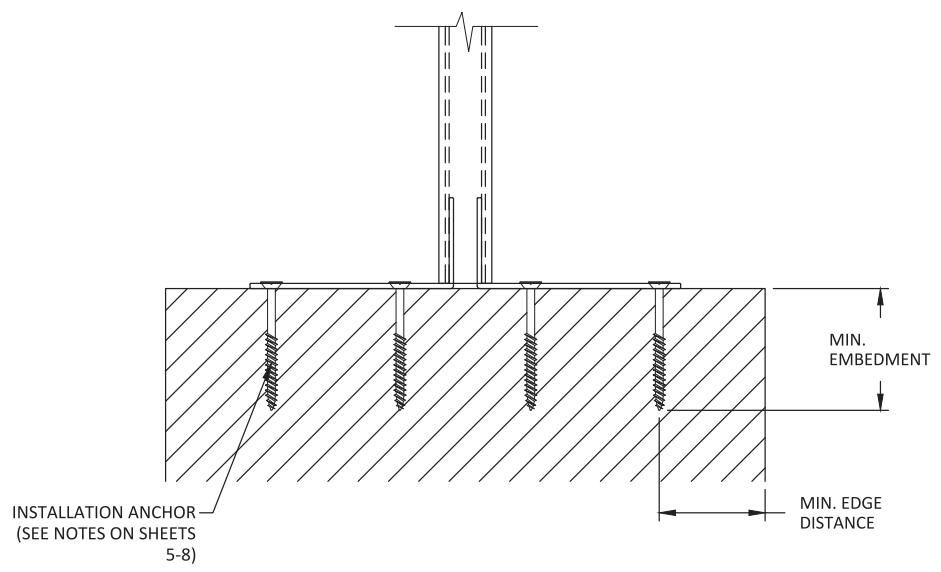
**D**  
**2** **TOP VIEW**  
END CLIP DETAIL WITH HOLE LAYOUT  
ITW TAPCONS INTO CONCRETE/MASONRY



**E**  
**2** **TOP VIEW**  
END CLIP DETAIL WITH HOLE LAYOUT  
HILTI KWIK BOLTS INTO CONCRETE/MASONRY



**A**  
**2** **SIDE VIEW**  
MULLION W/ END CLIPS (ONE OR TWO WAY)  
STANDARD CLIP



**B**  
**2** **FRONT VIEW**  
MULLION W/ END CLIPS (ONE OR TWO WAY)  
STANDARD CLIP

**ATRIUM**  
WINDOWS AND DOORS  
ATRIUM WINDOWS AND DOORS  
9001 AMBASSADOR ROW  
DALLAS, TEXAS 75247  
PH: (214)637-2696 FAX: (214)424-6734

TITLE: 130 1.25" TUBE MULLION  
VERTICAL & HORIZONTAL  
(NON-HVHZ)/(NON-IMPACT)  
MULLION DETAILS  
(STANDARD CLIP)  
PREPARED BY: BUILDING DROPS, INC.  
398 E. DANIA BEACH BLVD., STE. 338  
DANIA BEACH, FL 33004  
PH: (954)744-4738  
FAX: (954)744-4738  
WEB: www.buildingdrops.com

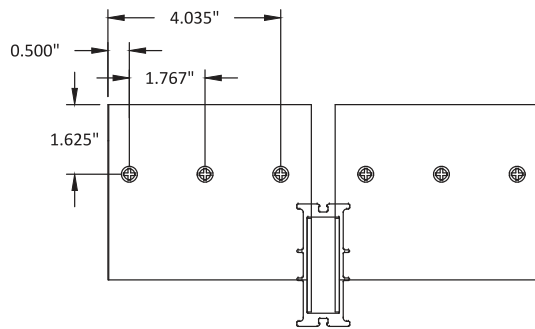
REMARKS	BY	DATE
FBC 5th ED. CODE CHANGE	SM	06.03.14
ADDITIONAL SIZING	LS	04.14.16
FBC 2017 CODE CHANGE	AG	10.03.17
FBC 2020 CODE CHANGE	LL	11.11.20

THIS DOCUMENT IS THE PROPERTY OF BUILDING DROPS, INC. AND SHALL NOT BE REPRODUCED IN WHOLE OR PART WITHOUT WRITTEN CONSENT OF BUILDING DROPS, INC. ALTERATIONS, ADDITIONS, HIGHLIGHTING, OR OTHER MARKINGS TO THIS DOCUMENT ARE NOT PERMITTED AND INVALIDATE OUR CERTIFICATION.

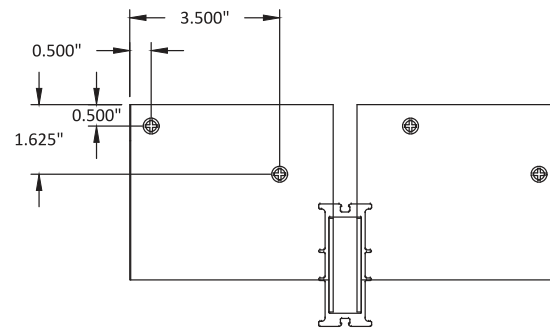
HERMES M. MORERO  
LICENSED PROFESSIONAL ENGINEER  
No. 73778  
STATE OF FLORIDA  
HERMES M. MORERO, P.E.  
FLORIDA P.E. No. 73778  
BUILDING DROPS, INC.  
398 E. DANIA BEACH BLVD., # 338  
DANIA BEACH, FL 33004  
FBPE CERT. OF AUTHORIZATION No. 29578

FL #:  
**FL22377**  
DATE: **10.03.17**  
DWG. BY: **AR/AG** CHK. BY: **HFN**  
SCALE: **NTS**  
DWG. #: **ATR110**  
SECTION:

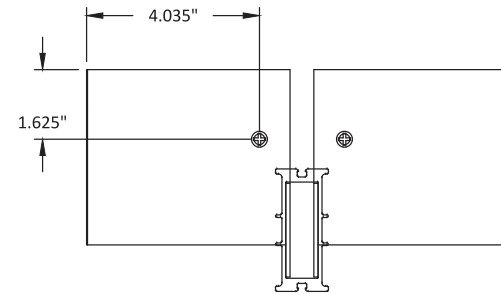
c:\users\hulpe\desktop\manage\building\_drops\projects\130\gen\_windows\130-1123\dwg\std\atr110.dwg



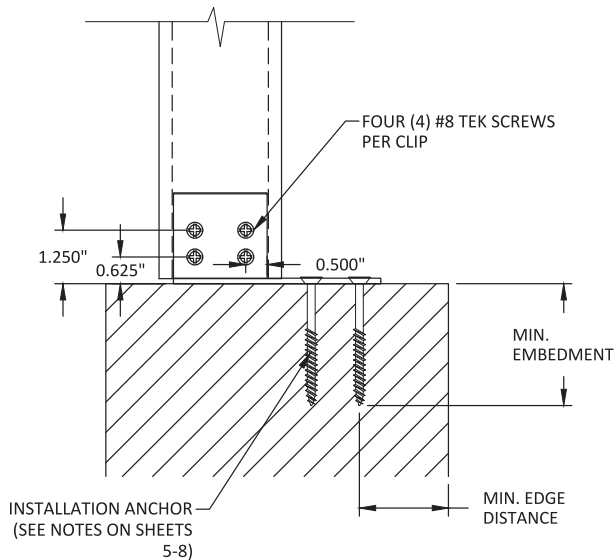
**H**  
**3** **TOP VIEW**  
END CLIP DETAIL WITH HOLE LAYOUT  
WOOD OR STEEL STUD INSTALLATION



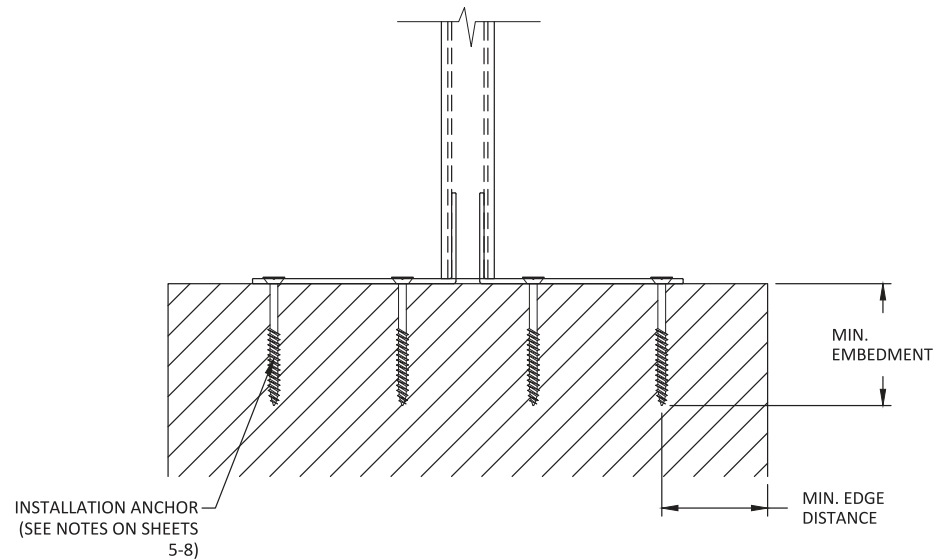
**I**  
**3** **TOP VIEW**  
END CLIP DETAIL WITH HOLE LAYOUT  
ITW TAPCONS INTO CONCRETE/MASONRY



**J**  
**3** **TOP VIEW**  
END CLIP DETAIL WITH HOLE LAYOUT  
HILTI KWIK BOLTS INTO CONCRETE/MASONRY



**F**  
**3** **SIDE VIEW**  
MULLION W/ END CLIPS (ONE OR TWO WAY)  
OFFSET CLIP



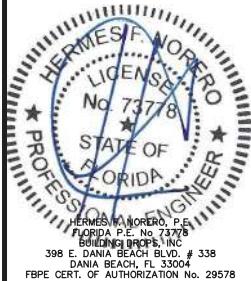
**G**  
**3** **FRONT VIEW**  
MULLION W/ END CLIPS (ONE OR TWO WAY)  
OFFSET CLIP

TITLE: 130 1.25" TUBE MULLION  
VERTICAL & HORIZONTAL  
(NON-HVHZ)/(NON-IMPACT)  
MULLION DETAILS  
(OFFSET CLIP)

PREPARED BY:  
**BUILDING DROPS, INC.**  
398 E. DANIA BEACH BLVD., STE. 338  
DANIA BEACH, FL 33004  
PH: (954)744-4738  
FAX: (954)744-4738  
WEB: www.buildingdrops.com

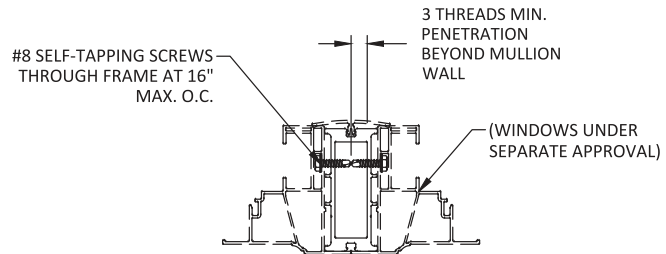
REMARKS	BY	DATE
FBC 5th ED. CODE CHANGE	SM	06.03.14
ADDITIONAL SIZING	LS	04.14.16
FBC 2017 CODE CHANGE	AG	10.03.17
FBC 2020 CODE CHANGE	LL	11.11.20

THIS DOCUMENT IS THE PROPERTY OF BUILDING DROPS, INC. AND SHALL NOT BE REPRODUCED IN WHOLE OR PART WITHOUT WRITTEN CONSENT OF BUILDING DROPS, INC. ALTERATIONS, ADDITIONS, HIGHLIGHTING, OR OTHER MARKINGS TO THIS DOCUMENT ARE NOT PERMITTED AND INVALIDATE OUR CERTIFICATION.

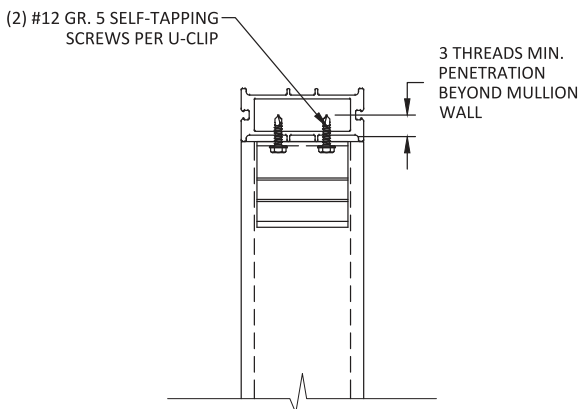


FL #:	<b>FL22377</b>
DATE:	<b>10.03.17</b>
DWG. BY:	<b>AR/AG</b>
CHK. BY:	<b>HFN</b>
SCALE:	<b>NTS</b>
DWG. #:	<b>ATR110</b>
SECTION:	<b>3</b>

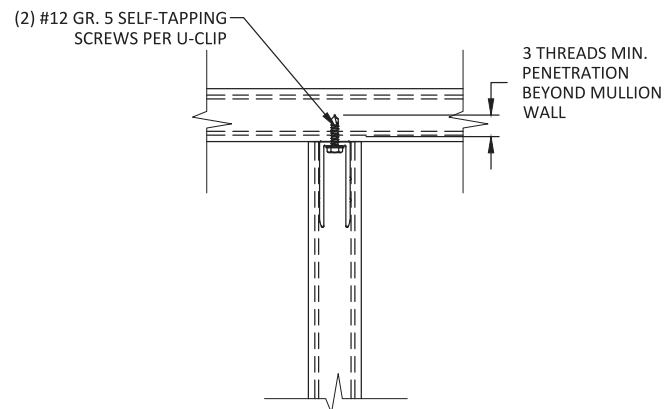
11/12/2020 5:19 PM



**M**  
**4** **HORIZONTAL SECTION**  
FRAME CONNECTION TO MULLION  
TYPICAL



**K**  
**4** **SIDE VIEW**  
MULLION WITH U-CLIP (TWO WAY)  
TYPICAL




**L**  
**4** **FRONT VIEW**  
MULLION WITH U-CLIP (TWO WAY)  
TYPICAL

**ATRIUM**  
WINDOWS AND DOORS  
ATRIUM WINDOWS AND DOORS  
9001 AMBASSADOR ROW  
DALLAS, TEXAS 75247  
PH: (214)637-2696 FAX: (214)424-6734


TITLE: 130 1.25" TUBE MULLION  
VERTICAL & HORIZONTAL  
(NON-HVHZ)/(NON-IMPACT)  
TWO-WAY DETAILS &  
FRAME DETAIL

PREPARED BY: BUILDING DROPS, INC.  
398 E. DANIA BEACH BLVD., STE. 338  
DANIA BEACH, FL 33004  
PH: (954)744-4738  
FAX: (954)744-4738  
WEB: www.buildingdrops.com



REMARKS	BY	DATE
FBC 5th ED. CODE CHANGE	SM	06.03.14
ADDITIONAL SIZING	LS	04.14.16
FBC 2017 CODE CHANGE	AG	10.03.17
FBC 2020 CODE CHANGE	LL	11.11.20

THIS DOCUMENT IS THE PROPERTY OF BUILDING DROPS, INC. AND SHALL NOT BE REPRODUCED IN WHOLE OR PART WITHOUT WRITTEN CONSENT OF BUILDING DROPS, INC. ALTERATIONS, ADDITIONS, HIGHLIGHTING, OR OTHER MARKINGS TO THIS DOCUMENT ARE NOT PERMITTED AND INVALIDATE OUR CERTIFICATION.



HERMES M. ROMERO, P.E.  
FLORIDA P.E. No. 73778  
BUILDING DROPS, INC.  
398 E. DANIA BEACH BLVD., # 338  
DANIA BEACH, FL 33004  
FBPE CERT. OF AUTHORIZATION No. 29578

FL #:	<b>FL22377</b>
DATE:	<b>10.03.17</b>
DWG. BY:	<b>AR/AG</b>
CHK. BY:	<b>HFN</b>
SCALE:	<b>NTS</b>
DWG. #:	<b>ATR110</b>
SECTION:	<b>4</b>

c:\users\huzi\local\desktop\manager\building\_drops\projects\atrium\_windows\cc-20-1123\dwg\atrium\_atri110.dwg

**Maximum design pressure capacity chart (psf)  
One-Way Mullions (Tapcons only)**

L - Mull Length (in)	W - Tributary Width (in)													
	18.0	21.0	24.0	27.0	30.0	33.0	36.0	42.0	48.0	54.0	60.0	66.0	72.0	78.0
24.0	150.0	150.0	150.0	150.0	150.0	150.0	150.0	150.0	150.0	150.0	150.0	150.0	150.0	150.0
30.0	150.0	150.0	150.0	150.0	150.0	150.0	150.0	150.0	150.0	150.0	150.0	150.0	150.0	150.0
36.0	150.0	150.0	150.0	150.0	150.0	150.0	150.0	150.0	150.0	150.0	150.0	150.0	150.0	150.0
42.0	150.0	150.0	143.7	134.5	127.8	123.0	119.8	117.3	117.3	117.3	117.3	117.3	117.3	117.3
48.0	147.4	131.4	119.8	111.1	104.5	99.6	95.8	91.3	89.8	89.8	89.8	89.8	89.8	89.8
54.0	127.8	113.3	102.7	94.6	88.5	83.6	79.9	74.7	71.9	71.0	71.0	71.0	71.0	71.0
60.0	112.7	99.6	89.8	82.4	76.7	72.1	68.4	63.2	59.9	58.1	57.5	57.5	57.5	57.5
66.0	100.9	88.8	79.9	73.0	67.6	63.4	59.9	54.8	51.3	49.1	47.9	47.5	47.5	47.5
72.0	91.3	80.1	71.9	65.5	60.5	56.5	53.2	48.3	44.9	42.6	41.1	40.2	39.9	39.9
78.0	83.3	73.0	65.1	58.4	53.2	49.0	45.5	40.3	36.6	34.0	32.2	31.0	30.3	30.1
84.0	68.0	58.7	51.8	46.5	42.2	38.8	36.0	31.7	28.7	26.5	24.9	23.7	23.0	22.5
90.0	55.2	47.6	41.9	37.6	34.1	31.3	29.0	25.5	22.9	21.0	19.6	18.6	17.9	17.4
96.0	45.4	39.1	34.4	30.8	28.0	25.6	23.7	20.8	18.6	17.0	15.8	-	-	-


**NOTES:**

- MULLION CHART APPLIES TO MULLION ASSEMBLIES WHEN USED TO MULL WINDOWS IN ONE-WAY CONFIGURATIONS SHOWN ON SHEET 1 USING ITW TAPCON ANCHORS ONLY. SEE DETAILS D/2 & 1/3.
- DESIGN PRESSURE VALUES ARE POSITIVE AND NEGATIVE IN PSF.
- MAXIMUM DEFLECTION HAS BEEN LIMITED TO L/175.
- DESIGN PRESSURE OF ASSEMBLY IS LIMITED TO THE LESSER DESIGN PRESSURE OF THE MULLION ASSEMBLY OR THE INDIVIDUAL WINDOW UNITS OF INSTALLATION UNDER SEPARATE APPROVAL.
- FOR CONCRETE/MASONRY INSTALLATION USE TWO (2) 1/4" DIAMETER ITW TAPCON SCREWS AT EACH ANCHOR CLIP. TAPCONS SHALL BE OF SUFFICIENT LENGTH TO ACHIEVE A MINIMUM 1-1/4" EMBEDMENT AND MINIMUM 2-1/2" EDGE DISTANCE. SEE DETAILS D/2 & 1/3.



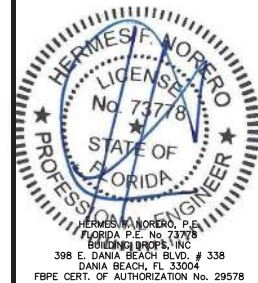
TITLE: 130 1.25" TUBE MULLION VERTICAL & HORIZONTAL (NON-HVHZ)/(NON-IMPACT) ONE-WAY MULL TABLES (TAPCONS ONLY)

PREPARED BY: BUILDING DROPS, INC.  
398 E. DANIA BEACH BLVD., STE. 338  
DANIA BEACH, FL 33004  
PHONE: (954)744-4738  
FAX: (954)744-4738  
WEB: www.buildingdrops.com



REMARKS	BY	DATE
FBC 5th ED. CODE CHANGE	SM	06.03.14
ADDITIONAL SIZING	LS	04.14.16
FBC 2017 CODE CHANGE	AG	10.03.17
FBC 2020 CODE CHANGE	LL	11.11.20

THIS DOCUMENT IS THE PROPERTY OF BUILDING DROPS, INC. AND SHALL NOT BE REPRODUCED IN WHOLE OR PART WITHOUT WRITTEN CONSENT OF BUILDING DROPS, INC. ALTERATIONS, ADDITIONS, HIGHLIGHTING, OR OTHER MARKINGS TO THIS DOCUMENT ARE NOT PERMITTED AND INVALIDATE OUR CERTIFICATION.



FL #: **FL22377**

DATE: **10.03.17**

DWG. BY: **AR/AG**      CHK. BY: **HFN**

SCALE: **NTS**

DWG. #: **ATR110**

SECTION: **5**

OF 8

## Maximum design pressure capacity chart (psf) One-Way Mullions (All other anchors)

L - Mull Length (in)	W - Tributary Width (in)													
	18.0	21.0	24.0	27.0	30.0	33.0	36.0	42.0	48.0	54.0	60.0	66.0	72.0	78.0
24.0	150.0	150.0	150.0	150.0	150.0	150.0	150.0	150.0	150.0	150.0	150.0	150.0	150.0	150.0
30.0	150.0	150.0	150.0	150.0	150.0	150.0	150.0	150.0	150.0	150.0	150.0	150.0	150.0	150.0
36.0	150.0	150.0	150.0	150.0	150.0	150.0	150.0	150.0	150.0	150.0	150.0	150.0	150.0	150.0
42.0	150.0	150.0	150.0	150.0	150.0	150.0	150.0	150.0	150.0	150.0	150.0	150.0	150.0	150.0
48.0	150.0	150.0	150.0	150.0	150.0	150.0	150.0	150.0	148.3	148.3	148.3	148.3	148.3	148.3
54.0	150.0	150.0	150.0	150.0	146.0	138.0	131.8	123.2	118.6	117.1	117.1	117.1	117.1	117.1
60.0	150.0	150.0	146.8	132.8	121.9	113.3	106.4	96.5	90.4	87.1	86.0	86.0	86.0	86.0
66.0	142.0	123.1	109.1	98.4	90.0	83.3	77.9	69.9	64.6	61.2	59.4	58.7	58.7	58.7
72.0	108.8	94.2	83.3	74.9	68.4	63.1	58.8	52.3	47.9	44.9	42.9	41.8	41.5	41.5
78.0	85.2	73.7	65.1	58.4	53.2	49.0	45.5	40.3	36.6	34.0	32.2	31.0	30.3	30.1
84.0	68.0	58.7	51.8	46.5	42.2	38.8	36.0	31.7	28.7	26.5	24.9	23.7	23.0	22.5
90.0	55.2	47.6	41.9	37.6	34.1	31.3	29.0	25.5	22.9	21.0	19.6	18.6	17.9	17.4
96.0	45.4	39.1	34.4	30.8	28.0	25.6	23.7	20.8	18.6	17.0	15.8	-	-	-

**NOTES:**

- MULLION CHART APPLIES TO MULLION ASSEMBLIES WHEN USED TO MULL WINDOWS IN ONE-WAY CONFIGURATIONS SHOWN ON SHEET 1 USING ALL OTHER ANCHOR OPTIONS. SEE DETAILS C/2, E/2, H/3, & J/3.
- DESIGN PRESSURE VALUES ARE POSITIVE AND NEGATIVE IN PSF.
- MAXIMUM DEFLECTION HAS BEEN LIMITED TO L/175.
- DESIGN PRESSURE OF ASSEMBLY IS LIMITED TO THE LESSER DESIGN PRESSURE OF THE MULLION ASSEMBLY OR THE INDIVIDUAL WINDOW UNITS OF INSTALLATION UNDER SEPARATE APPROVAL.
- FOR WOOD FRAME INSTALLATION USE THREE (3) #14 WOOD SCREWS AT EACH ANCHOR CLIP. WOOD SCREWS SHALL BE OF SUFFICIENT LENGTH TO ACHIEVE A MINIMUM 1-1/2" EMBEDMENT AND MINIMUM 3/4" EDGE DISTANCE. SEE DETAILS C/2 & H/3.
- FOR STEEL STUD INSTALLATION USE THREE (3) 1/4" TEK SCREWS AT EACH ANCHOR CLIP. TEK SCREWS SHALL BE OF SUFFICIENT LENGTH TO ACHIEVE A MINIMUM OF 3 THREADS PENETRATION BEYOND STEEL STRUCTURE EMBEDMENT AND MINIMUM 1/2" EDGE DISTANCE. SEE DETAILS C/2 & H/3.
- FOR CONCRETE INSTALLATION USE ONE (1) 3/8" DIAMETER HILTI KWIK BOLT III EXPANSION ANCHOR AT EACH ANCHOR CLIP. BOLTS SHALL BE OF SUFFICIENT LENGTH TO ACHIEVE A MINIMUM 2-1/2" EMBEDMENT AND MINIMUM 2-1/2" EDGE DISTANCE. SEE DETAILS E/2 & J/3.
- FOR GROUT-FILLED CMU INSTALLATION USE ONE (1) 3/8" DIAMETER HILTI KWIK BOLT III EXPANSION ANCHOR AT EACH ANCHOR CLIP. BOLTS SHALL BE OF SUFFICIENT LENGTH TO ACHIEVE A MINIMUM 2-1/2" EMBEDMENT AND MINIMUM 3-1/2" EDGE DISTANCE. SEE DETAILS E/2 & J/3



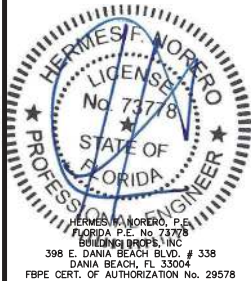
TITLE: 130 1.25" TUBE MULLION VERTICAL & HORIZONTAL (NON-HVHZ)/(NON-IMPACT) ONE-WAY MULL TABLES (ALL OTHER ANCHORS)

PREPARED BY: BUILDING DROPS, INC.  
398 E. DANIA BEACH BLVD., STE. 338  
DANIA BEACH, FL 33004  
PH: (954)744-4738  
FAX: (954)744-4738  
WEB: www.buildingdrops.com



REMARKS	BY	DATE
FBC 5th ED. CODE CHANGE	SM	06.03.14
ADDITIONAL SIZING	LS	04.14.16
FBC 2017 CODE CHANGE	AG	10.03.17
FBC 2020 CODE CHANGE	LL	11.11.20

THIS DOCUMENT IS THE PROPERTY OF BUILDING DROPS, INC. AND SHALL NOT BE REPRODUCED IN WHOLE OR PART WITHOUT WRITTEN CONSENT OF BUILDING DROPS, INC. ALTERATIONS, ADDITIONS, HIGHLIGHTING, OR OTHER MARKINGS TO THIS DOCUMENT ARE NOT PERMITTED AND INVALIDATE OUR CERTIFICATION.



FL #:	<b>FL22377</b>	
DATE:	10.03.17	
DWG. BY:	AR/AG	CHK. BY: HFN
SCALE:	NTS	
DWG. #:	ATR110	
SECTION:	6	

**Maximum design pressure capacity chart (psf)  
Two-Way Mullions (Tapcons Only)**

L - Mull Length (in)	W - Tributary Width (in)														
	18.0	21.0	24.0	27.0	30.0	33.0	36.0	42.0	48.0	54.0	55.0	60.0	66.0	72.0	78.0
24.0	150.0	150.0	150.0	150.0	150.0	150.0	150.0	150.0	150.0	150.0	150.0	143.7	130.7	119.8	110.6
30.0	150.0	150.0	150.0	150.0	150.0	150.0	150.0	150.0	143.7	127.8	125.4	115.0	104.5	95.8	88.5
36.0	150.0	150.0	150.0	150.0	150.0	150.0	150.0	136.9	119.8	106.5	104.5	95.8	87.1	79.9	73.7
42.0	150.0	150.0	150.0	150.0	150.0	149.3	136.9	117.3	102.7	91.3	89.6	82.1	74.7	68.4	63.2
48.0	150.0	150.0	150.0	150.0	143.7	130.7	119.8	102.7	89.8	79.9	78.4	71.9	65.3	59.9	55.3
54.0	150.0	150.0	150.0	142.0	127.8	116.2	106.5	91.3	79.9	71.0	69.7	63.9	58.1	53.2	49.1
60.0	150.0	150.0	137.5	122.2	110.0	100.0	91.7	78.6	68.8	61.1	60.0	55.0	50.0	45.8	42.3
66.0	137.8	118.1	103.3	91.8	82.7	75.1	68.9	59.0	51.7	45.9	45.1	41.3	37.6	34.4	31.8
72.0	106.1	91.0	79.6	70.7	63.7	57.9	53.1	45.5	39.8	35.4	34.7	31.8	28.9	26.5	24.5
74.0	97.7	83.8	73.3	65.2	58.6	53.3	48.9	41.9	36.7	32.6	32.0	29.3	26.7	24.4	22.6
78.0	83.5	71.5	62.6	55.6	50.1	45.5	41.7	35.8	31.3	27.8	27.3	25.0	22.8	20.9	19.3
84.0	66.8	57.3	50.1	44.6	40.1	36.5	33.4	28.6	25.1	22.3	21.9	20.0	18.2	16.7	15.4
90.0	54.3	46.6	40.7	36.2	32.6	29.6	27.2	23.3	20.4	18.1	17.8	16.3	-	-	-
96.0	44.8	38.4	33.6	29.8	26.9	24.4	22.4	19.2	16.8	-	-	-	-	-	-

**NOTES:**

- MULLION CHART APPLIES TO MULLION ASSEMBLIES WHEN USED TO MULL WINDOWS IN TWO-WAY CONFIGURATIONS SHOWN ON SHEET 1 USING ITW TAPCON ANCHORS ONLY. SEE DETAILS D/2, I/3, K/4 & L/4.
- DESIGN PRESSURE VALUES ARE POSITIVE AND NEGATIVE IN PSF.
- MAXIMUM DEFLECTION HAS BEEN LIMITED TO L/175.
- DESIGN PRESSURE OF ASSEMBLY IS LIMITED TO THE LESSER DESIGN PRESSURE OF THE MULLION ASSEMBLY OR THE INDIVIDUAL WINDOW UNITS OF INSTALLATION
- FOR CONCRETE/MASONRY INSTALLATION USE TWO (2) 1/4" DIAMETER ITW TAPCON SCREWS AT EACH ANCHOR CLIP. TAPCONS SHALL BE OF SUFFICIENT LENGTH TO ACHIEVE A MINIMUM 1-1/4" EMBEDMENT AND MINIMUM 2-1/2" EDGE DISTANCE. SEE DETAILS D/2 & I/3.
- FOR TWO-WAY CONNECTION OF U-CLIP TO MULLION USE TWO (2) 1/4" TEK SCREWS AT EACH ANCHOR CLIP. TEK SCREWS SHALL BE OF SUFFICIENT LENGTH TO ACHIEVE A MINIMUM OF 3 THREADS PENETRATION BEYOND ALUMINUM MULLION STRUCTURE. SEE DETAILS K/4 & L/4.



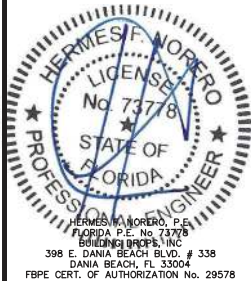
TITLE: 130 1.25" TUBE MULLION VERTICAL & HORIZONTAL (NON-HVHZ)/(NON-IMPACT) TWO-WAY MULL TABLES (TAPCONS ONLY)

PREPARED BY: BUILDING DROPS, INC.  
398 E. DANIA BEACH BLVD., STE. 338  
DANIA BEACH, FL 33004  
PHONE: (954) 944-4738  
FAX: (954) 944-4738  
WEB: www.buildingdrops.com



REMARKS	BY	DATE
FBC 5th ED. CODE CHANGE	SM	06.03.14
ADDITIONAL SIZING	LS	04.14.16
FBC 2017 CODE CHANGE	AG	10.03.17
FBC 2020 CODE CHANGE	LL	11.11.20

THIS DOCUMENT IS THE PROPERTY OF BUILDING DROPS, INC. AND SHALL NOT BE REPRODUCED IN WHOLE OR PART WITHOUT WRITTEN CONSENT OF BUILDING DROPS, INC. ALTERATIONS, ADDITIONS, HIGHLIGHTING, OR OTHER MARKINGS TO THIS DOCUMENT ARE NOT PERMITTED AND INVALIDATE OUR CERTIFICATION.



FL #: **FL22377**

DATE: **10.03.17**

DWG. BY: **AR/AG**      CHK. BY: **HFN**

SCALE: **NTS**

DWG. #: **ATR110**

SECTION:

**Maximum design pressure capacity chart (psf)  
Two-Way Mullions (All other anchors)**

L - Mull Length (in)	W - Tributary Width (in)														
	18.0	21.0	24.0	27.0	30.0	33.0	36.0	42.0	48.0	54.0	55.0	60.0	66.0	72.0	78.0
24.0	150.0	150.0	150.0	150.0	150.0	150.0	150.0	150.0	150.0	150.0	150.0	150.0	150.0	150.0	150.0
30.0	150.0	150.0	150.0	150.0	150.0	150.0	150.0	150.0	150.0	150.0	150.0	150.0	150.0	150.0	146.0
36.0	150.0	150.0	150.0	150.0	150.0	150.0	150.0	150.0	150.0	150.0	150.0	150.0	143.8	131.8	121.6
42.0	150.0	150.0	150.0	150.0	150.0	150.0	150.0	150.0	150.0	143.1	140.5	128.8	117.1	107.3	99.1
48.0	150.0	150.0	150.0	150.0	150.0	150.0	150.0	140.9	123.3	109.6	107.6	98.6	89.7	82.2	75.9
54.0	150.0	150.0	150.0	150.0	150.0	137.2	125.8	107.8	94.3	83.8	82.3	75.5	68.6	62.9	58.0
60.0	150.0	150.0	137.5	122.2	110.0	100.0	91.7	78.6	68.8	61.1	60.0	55.0	50.0	45.8	42.3
66.0	137.8	118.1	103.3	91.8	82.7	75.1	68.9	59.0	51.7	45.9	45.1	41.3	37.6	34.4	31.8
72.0	106.1	91.0	79.6	70.7	63.7	57.9	53.1	45.5	39.8	35.4	34.7	31.8	28.9	26.5	24.5
74.0	97.7	83.8	73.3	65.2	58.6	53.3	48.9	41.9	36.7	32.6	32.0	29.3	26.7	24.4	22.6
78.0	83.5	71.5	62.6	55.6	50.1	45.5	41.7	35.8	31.3	27.8	27.3	25.0	22.8	20.9	19.3
84.0	66.8	57.3	50.1	44.6	40.1	36.5	33.4	28.6	25.1	22.3	21.9	20.0	18.2	16.7	15.4
90.0	54.3	46.6	40.7	36.2	32.6	29.6	27.2	23.3	20.4	18.1	17.8	16.3	-	-	-
96.0	44.8	38.4	33.6	29.8	26.9	24.4	22.4	19.2	16.8	-	-	-	-	-	-

**NOTES:**

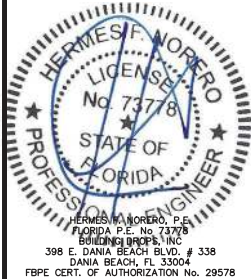
- MULLION CHART APPLIES TO MULLION ASSEMBLIES WHEN USED TO MULL WINDOWS IN TWO-WAY CONFIGURATIONS SHOWN ON SHEET 1 USING ALL OTHER ANCHOR OPTIONS. SEE DETAILS C/2, E/2, H/3, J/3, K/4, & L/4.
- DESIGN PRESSURE VALUES ARE POSITIVE AND NEGATIVE IN PSF.
- MAXIMUM DEFLECTION HAS BEEN LIMITED TO L/175.
- DESIGN PRESSURE OF ASSEMBLY IS LIMITED TO THE LESSER DESIGN PRESSURE OF THE MULLION ASSEMBLY OR THE INDIVIDUAL WINDOW UNITS OF INSTALLATION UNDER SEPARATE APPROVAL.
- FOR WOOD FRAME INSTALLATION USE THREE (3) #14 WOOD SCREWS AT EACH ANCHOR CLIP. WOOD SCREWS SHALL BE OF SUFFICIENT LENGTH TO ACHIEVE A MINIMUM 1-1/2" EMBEDMENT AND MINIMUM 3/4" EDGE DISTANCE. SEE DETAILS C/2 & H/3.
- FOR STEEL STUD INSTALLATION USE THREE (3) 1/4" TEK SCREWS AT EACH ANCHOR CLIP. TEK SCREWS SHALL BE OF SUFFICIENT LENGTH TO ACHIEVE A MINIMUM OF 3 THREADS PENETRATION BEYOND STEEL STRUCTURE EMBEDMENT AND MINIMUM 1/2" EDGE DISTANCE. SEE DETAILS C/2 & H/3.
- FOR CONCRETE INSTALLATION USE ONE (1) 3/8" DIAMETER HILTI KWIK BOLT III EXPANSION ANCHOR AT EACH ANCHOR CLIP. BOLTS SHALL BE OF SUFFICIENT LENGTH TO ACHIEVE A MINIMUM 2-1/2" EMBEDMENT AND MINIMUM 2-1/2" EDGE DISTANCE. SEE DETAILS E/2 & J/3.
- FOR GROUT-FILLED CMU INSTALLATION USE ONE (1) 3/8" DIAMETER HILTI KWIK BOLT III EXPANSION ANCHOR AT EACH ANCHOR CLIP. BOLTS SHALL BE OF SUFFICIENT LENGTH TO ACHIEVE A MINIMUM 2-1/2" EMBEDMENT AND MINIMUM 3-1/2" EDGE DISTANCE. SEE DETAILS E/2 & J/3.
- FOR TWO-WAY CONNECTION OF U-CLIP TO MULLION USE TWO (2) 1/4" TEK SCREWS AT EACH ANCHOR CLIP. TEK SCREWS SHALL BE OF SUFFICIENT LENGTH TO ACHIEVE A MINIMUM OF 3 THREADS PENETRATION BEYOND ALUMINUM MULLION STRUCTURE. SEE DETAILS K/4 & L/4.



TITLE: 130 1.25" TUBE MULLION VERTICAL & HORIZONTAL (NON-HVHZ)(NON-IMPACT) TWO-WAY MULL TABLES (ALL OTHER ANCHORS)  
PREPARED BY: BUILDING DROPS, INC.  
398 E. DANIA BEACH BLVD., STE. 338  
DANIA BEACH, FL 33004  
PHONE: (954) 346-4300  
FAX: (954) 344-4738  
WEB: www.buildingdrops.com

REMARKS	BY	DATE
FBC 5th ED. CODE CHANGE	SM	06.03.14
ADDITIONAL SIZING	LS	04.14.16
FBC 2017 CODE CHANGE	AG	10.03.17
FBC 2020 CODE CHANGE	LL	11.11.20

THIS DOCUMENT IS THE PROPERTY OF BUILDING DROPS, INC. AND SHALL NOT BE REPRODUCED IN WHOLE OR PART WITHOUT WRITTEN CONSENT OF BUILDING DROPS, INC. ALTERATIONS, ADDITIONS, HIGHLIGHTING, OR OTHER MARKINGS TO THIS DOCUMENT ARE NOT PERMITTED AND INVALIDATE OUR CERTIFICATION.



FL #: **FL22377**  
DATE: **10.03.17**  
DWG. BY: **AR/AG** CHK. BY: **HFN**  
SCALE: **NTS**  
DWG. #: **ATR110**

SECTION:  
  
OF 8



**Product Approval**  
USER: Public User



[Product Approval Menu](#) > [Product or Application Search](#) > **Application List**

### Search Criteria

Code Version	2020	FL #	20472.1
Application Type	ALL	Product Manufacturer	ALL
Category	ALL	Subcategory	ALL
Application Status	ALL	Compliance Method	ALL
Quality Assurance Entity	ALL	Quality Assurance Entity Contract Expired	ALL
Product Model, Number or Name	ALL	Product Description	ALL
Approved for use in HVHZ	ALL	Approved for use outside HVHZ	ALL
Impact Resistant	ALL	Design Pressure	ALL
Other	ALL		

[Refine Search](#)

### Search Results - Applications

FL#	TYPE	Manufacturer	Validated By	Status
FL20472-R5 <a href="#">History</a>	Revision	Atrium Windows & Doors FL#: FL20472.1 Model: Series 120/130 Description: Horizontal Sliding Window Category: Windows Subcategory: Horizontal Slider	National Accreditation & Management Institute (804) 684-5124	Approved *

\*Approved by DBPR. Approvals by DBPR shall be reviewed and ratified by the POC and/or the Commission if necessary.

Contact Us :: [2601 Blair Stone Road, Tallahassee FL 32399](#) Phone: 850-487-1824

The State of Florida is an AA/EEO employer. Copyright 2007-2013 State of Florida. :: [Privacy Statement](#) :: [Accessibility Statement](#) :: [Refund SI](#)

Under Florida law, email addresses are public records. If you do not want your e-mail address released in response to a public-records request, direct your request to this entity. Instead, contact the office by phone or by traditional mail. If you have any questions, please contact 850.487.1395. > Section 455.275(1), Florida Statutes, effective October 1, 2012, licensees licensed under Chapter 455, F.S. must provide the Department with an email address for use in HVHZ. The emails provided may be used for official communication with the licensee. However email addresses are public record. If you do not supply a personal address, please provide the Department with an email address which can be made available to the public. To determine if you are required to supply a personal address, please refer to Chapter 455, F.S., please click [here](#).

#### Product Approval Accepts:



**INSTALLATION NOTES:**

- ONE (1) INSTALLATION ANCHOR IS REQUIRED AT EACH ANCHOR LOCATION SHOWN.
- THE NUMBER OF INSTALLATION ANCHORS DEPICTED IS THE MINIMUM NUMBER OF ANCHORS TO BE USED FOR PRODUCT INSTALLATION OF THE MAXIMUM SIZE LISTED.
- INSTALL INDIVIDUAL INSTALLATION ANCHORS WITHIN A TOLERANCE OF ±1/2 INCH OF THE DEPICTED LOCATION IN THE ANCHOR LAYOUT DETAIL (I.E., WITHOUT CONSIDERATION OF TOLERANCES). TOLERANCES ARE NOT CUMULATIVE FROM ONE INSTALLATION ANCHOR TO THE NEXT.
- SHIM AS REQUIRED AT EACH INSTALLATION ANCHOR WITH LOAD BEARING SHIM(S). MAXIMUM ALLOWABLE SHIM STACK TO BE 1/4 INCH. SHIM WHERE SPACE OF 1/16 INCH OR GREATER OCCURS. SHIM(S) SHALL BE CONSTRUCTED OF HIGH DENSITY PLASTIC OR BETTER.
- THROUGH FRAME:** FOR INSTALLATION INTO WOOD FRAMING USE #10 WOOD SCREWS THROUGH THE FRAME OF SUFFICIENT LENGTH TO ACHIEVE 1 1/2 INCH MINIMUM EMBEDMENT INTO WOOD SUBSTRATE.
- THROUGH FRAME:** FOR INSTALLATION THROUGH 1X BUCK TO CONCRETE/MASONRY, OR DIRECTLY INTO CONCRETE/MASONRY, USE 3/16 INCH DIAMETER ITW TAPCONS OF SUFFICIENT LENGTH TO ACHIEVE 1 1/4 INCH MINIMUM EMBEDMENT.
- THROUGH FRAME:** FOR INSTALLATION INTO METAL STUD OR APPROVED MULLION USE #10 GR. 5 SELF TAPPING SCREWS THROUGH THE FRAME OF SUFFICIENT LENGTH TO ACHIEVE A MINIMUM OF 3 THREADS PENETRATION BEYOND METAL FRAME SUBSTRATE.
- THROUGH FIN:** FOR INSTALLATION INTO WOOD FRAMING USE #8 WOOD SCREWS THROUGH THE FIN OF SUFFICIENT LENGTH TO ACHIEVE 1 1/2 INCH MINIMUM EMBEDMENT INTO WOOD SUBSTRATE.
- THROUGH FIN:** FOR INSTALLATION INTO METAL STUD OR APPROVED MULLION USE #8 GR. 5 SELF TAPPING SCREWS THROUGH THE FIN OF SUFFICIENT LENGTH TO ACHIEVE A MINIMUM OF 3 THREADS PENETRATION BEYOND METAL FRAME SUBSTRATE.
- MINIMUM EMBEDMENT AND EDGE DISTANCE EXCLUDE WALL FINISHES, INCLUDING BUT NOT LIMITED TO STUCCO, FOAM, BRICK VENEER, AND SIDING.
- INSTALLATION ANCHORS AND ASSOCIATED HARDWARE MUST BE MADE OF CORROSION RESISTANT MATERIAL OR HAVE A CORROSION RESISTANT COATING.
- FOR HOLLOW BLOCK AND GROUT FILLED BLOCK, DO NOT INSTALL INSTALLATION ANCHORS INTO MORTAR JOINTS. EDGE DISTANCE IS MEASURED FROM FREE EDGE OF BLOCK OR EDGE OF MORTAR JOINT INTO FACE SHELL OF BLOCK.
- INSTALLATION ANCHORS SHALL BE INSTALLED IN ACCORDANCE WITH ANCHOR MANUFACTURER'S INSTALLATION INSTRUCTIONS, AND ANCHORS SHALL NOT BE USED IN SUBSTRATES WITH STRENGTHS LESS THAN THE MINIMUM STRENGTH SPECIFIED BY THE ANCHOR MANUFACTURER.
- INSTALLATION ANCHOR CAPACITIES FOR PRODUCTS HEREIN ARE BASED ON SUBSTRATE MATERIALS WITH THE FOLLOWING PROPERTIES:
  - WOOD - MINIMUM SPECIFIC GRAVITY OF 0.55.
  - CONCRETE - MINIMUM COMPRESSIVE STRENGTH OF 3000 PSI.
  - GROUT-FILLED CMU- UNIT STRENGTH CONFORMS TO ASTM C-90 WITH MINIMUM COMPRESSIVE STRENGTH OF 2000 PSI AND GROUT CONFORMS TO ASTM C 476, MINIMUM GROUT COMPRESSIVE STRENGTH OF 2000 PSI.
  - HOLLOW BLOCK CMU - UNIT STRENGTH CONFORMS TO ASTM C-90 WITH MINIMUM COMPRESSIVE STRENGTH OF 2000 PSI.
  - STEEL - MINIMUM YIELD STRENGTH OF 33 KSI. MINIMUM 18 GA. WALL THICKNESS.
  - ALUMINUM - MINIMUM ALLOY 6063-T5. MINIMUM WALL THICKNESS OF 1/16" (0.0625").

# ATRIUM COMPANIES, INC.

## SERIES 120/130

### HORIZONTAL SLIDER

### (NON-HVHZ)(NON-IMPACT)

**GENERAL NOTES:**

- THE PRODUCT SHOWN HEREIN IS DESIGNED AND MANUFACTURED TO COMPLY WITH THE CURRENT FLORIDA BUILDING CODE (FBC), EXCLUDING HVHZ AND HAS BEEN EVALUATED ACCORDING TO THE FOLLOWING:
  - AAMA/WDMA/CSA 101/I.S.2/A440-11
- ADEQUACY OF THE EXISTING STRUCTURAL CONCRETE/MASONRY AND 2X FRAMING AS A MAIN WIND FORCE RESISTING SYSTEM CAPABLE OF WITHSTANDING AND TRANSFERRING APPLIED PRODUCT LOADS TO THE FOUNDATION IS THE RESPONSIBILITY OF THE ENGINEER OR ARCHITECT OF RECORD FOR THE PROJECT OF INSTALLATION.
- 1X AND 2X BUCKS (WHEN USED) SHALL BE DESIGNED AND ANCHORED TO PROPERLY TRANSFER ALL LOADS TO THE STRUCTURE. BUCK DESIGN AND INSTALLATION IS THE RESPONSIBILITY OF THE ENGINEER OR ARCHITECT OF RECORD FOR THE PROJECT OF INSTALLATION.
- THE INSTALLATION DETAILS DESCRIBED HEREIN ARE GENERIC AND MAY NOT REFLECT ACTUAL CONDITIONS FOR A SPECIFIC SITE. IF SITE CONDITIONS CAUSE INSTALLATION TO DEVIATE FROM THE REQUIREMENTS DETAILED HEREIN, A LICENSED ENGINEER OR ARCHITECT SHALL PREPARE SITE SPECIFIC DOCUMENTS FOR USE WITH THIS DOCUMENT IN NON-HVHZ AREAS.
- APPROVED IMPACT PROTECTIVE SYSTEM **IS REQUIRED** ON THIS PRODUCT IN AREAS REQUIRING IMPACT RESISTANCE.
- WINDOW FRAME MATERIAL: PVC
- GLASS SHALL MEET THE REQUIREMENTS OF ASTM E 1300 GLASS CHARTS. SEE SHEET 4 FOR GLAZING DETAIL.
- ALL SILL PENETRATIONS (WHETHER OR NOT FILLED WITH AN INSTALLATION ANCHOR) ARE TO BE OVER SEALED WITH AN APPROPRIATE SILICONE SEALANT.
- DESIGNATIONS "X" AND "O" STAND FOR THE FOLLOWING:
  - X: OPERABLE PANEL
  - O: FIXED PANEL

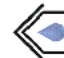
TABLE OF CONTENTS	
SHEET	SHEET DESCRIPTION
1	GENERAL & INSTALLATION NOTES
2	ELEVATIONS
3	ANCHOR LAYOUTS
4	VERTICAL SECTIONS & GLAZING DETAIL
5	HORIZONTAL SECTIONS

MAX O.A. SIZE		CONFIGURATION	DESIGN PRESSURE	MISSILE IMPACT RATING
WIDTH	HEIGHT			
74"	50"	XO	+/- 50 PSF	NON-IMPACT
74"	63"	XO	+/- 35 PSF	NON-IMPACT
108"	50"	XOX	+/- 50 PSF	NON-IMPACT
108"	63"	XOX	+/- 30 PSF	NON-IMPACT



TITLE: SERIES 120/130 HORIZONTAL SLIDER (NON-HVHZ)(NON-IMPACT) INSTALLATION & GENERAL NOTES

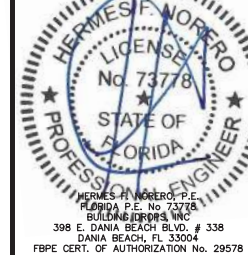
PREPARED BY: BUILDING DROPS, INC.  
 308 E. DANIA BEACH BLVD., STE. E38  
 DANIA BEACH, FL 33004  
 PH: (954) 399-8278  
 FAX: (954) 444-4738  
 WEB: www.buildingdrops.com



REMARKS	BY	DATE
FBC 5th ED.CODE CHANGE	SM	06.03.14
74"x63"DP REVISION	SM	06.03.14
FBC 2017 CODE CHANGE	AG	10.03.17
2020 FBC CODE CHANGE	NUS	08.13.20

THE INSTALLATION DETAILS DESCRIBED HEREIN ARE GENERIC AND MAY NOT REFLECT ACTUAL CONDITIONS FOR A SPECIFIC SITE. IF SITE CONDITIONS CAUSE INSTALLATION TO DEVIATE FROM THE REQUIREMENTS DETAILED HEREIN, A LICENSED ENGINEER OR ARCHITECT SHALL PREPARE SITE SPECIFIC DOCUMENTS FOR USE WITH THIS DOCUMENT.

Digitally signed by Hermes F Norero  
 Reason: I am approving this document  
 Date: 2020.12.08 20:05:27 -0500'



FL #: **FL20472**

DATE: **10.03.17**

DWG. BY: **AR/AG**      CHK. BY: **HFN**

SCALE: **NTS**

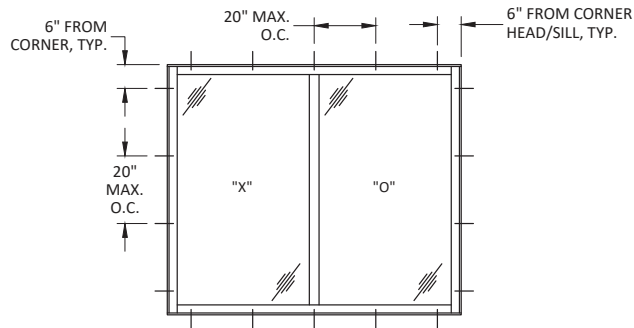
DWG. #: **ATR116**

SECTION:

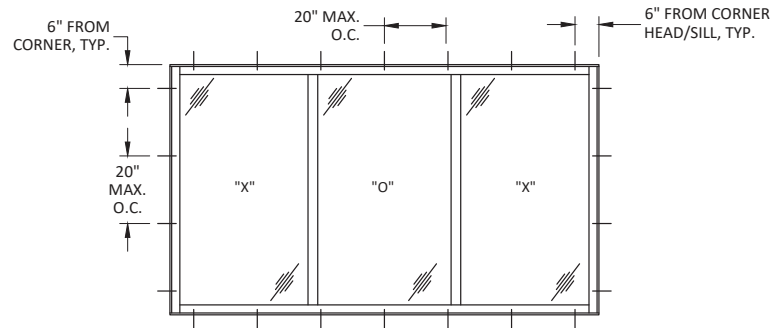
1

OF 5

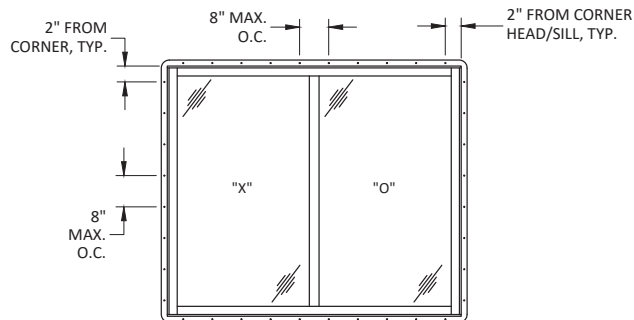




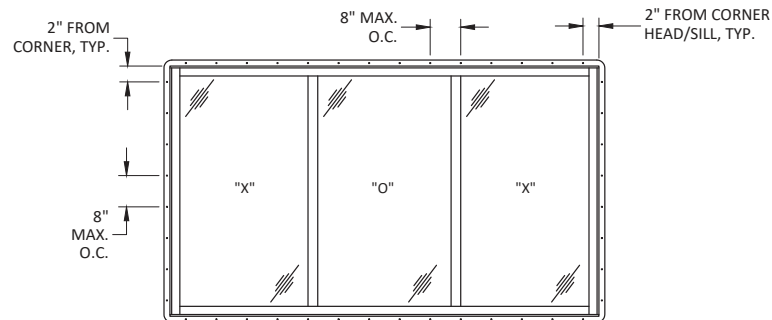
**ANCHOR LAYOUT**  
XO CONFIGURATION - THROUGH FRAME



**ANCHOR LAYOUT**  
XOX CONFIGURATION - THROUGH FRAME



**ANCHOR LAYOUT**  
XO CONFIGURATION - THROUGH FIN



**ANCHOR LAYOUT**  
XOX CONFIGURATION - THROUGH FIN

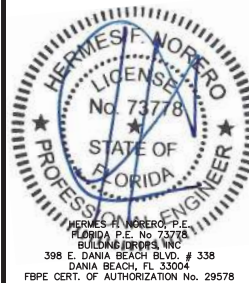
TITLE: **SERIES 120/130**  
**HORIZONTAL SLIDER**  
**(NON-HVHZ/(NON-IMPACT))**  
ANCHOR LAYOUTS

PREPARED BY: **BUILDING DROPS, INC.**  
398 E. DANIA BEACH BLVD., STE. 338  
DANIA BEACH, FL 33004  
PH: (954) 399-8278  
FAX: (954) 744-4738  
WEB: www.buildingdrops.com



REMARKS	BY	DATE
FBC 5th ED.CODE CHANGE	SM	06.03.14
74"X63"DP REVISION	SM	06.03.14
FBC 2017 CODE CHANGE	AG	10.03.17
2020 FBC CODE CHANGE	NUS	08.13.20

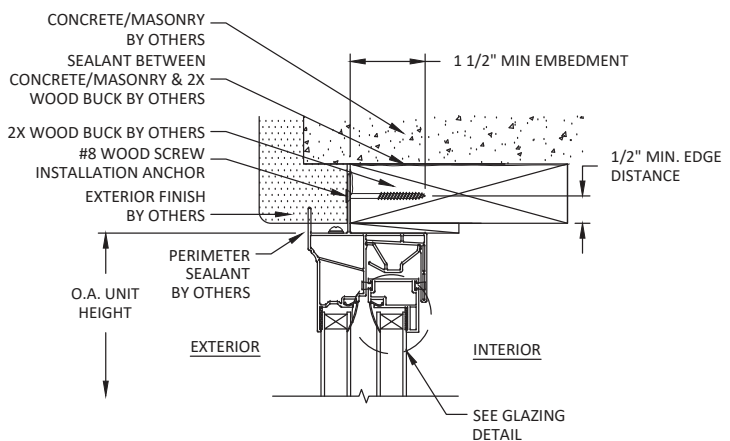
THE INSTALLATION DETAILS DESCRIBED HEREIN ARE GENERAL AND MAY NOT REFLECT ACTUAL CONDITIONS FOR A SPECIFIC SITE. IF SITE CONDITIONS CAUSE INSTALLATION TO DEVIATE FROM THE REQUIREMENTS DETAILED HEREIN, A LICENSED ENGINEER OR ARCHITECT SHALL PREPARE SITE SPECIFIC DOCUMENTS FOR USE WITH THIS DOCUMENT.



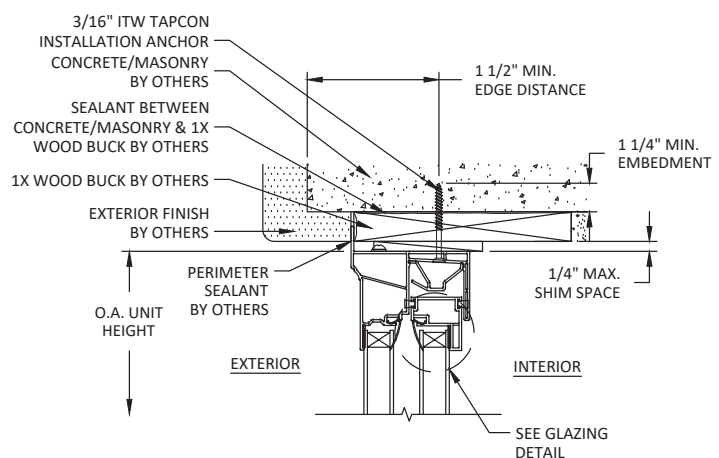
FL #:	<b>FL20472</b>
DATE:	<b>10.03.17</b>
DWG. BY:	<b>AR/AG</b>
CHK. BY:	<b>HFN</b>
SCALE:	<b>NTS</b>
DWG. #:	<b>ATR116</b>
SECTION:	

11/24/2020 7:28 PM

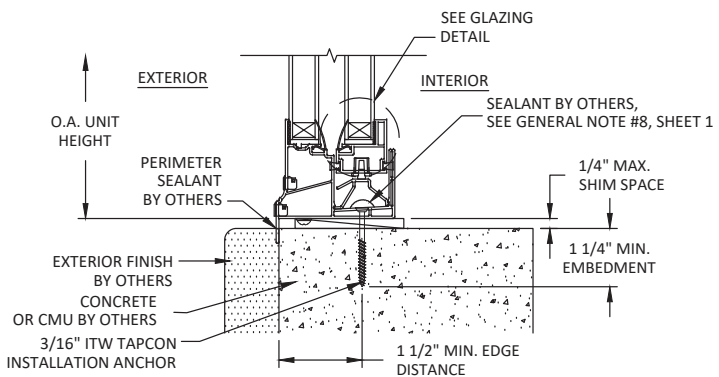
c:\users\jv50\desktop\manager\building\atrium\projects\atrium\companies\inc\dwg\120172\atri116\_11.24.2020.dwg



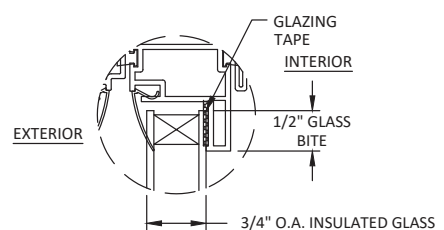
**A**  
**4**  
**VERTICAL SECTION**  
HEAD - 2X WOOD BUCK THROUGH FLANGE



**C**  
**4**  
**VERTICAL SECTION**  
HEAD - 1X BUCK/CONCRETE/MASONRY THROUGH FRAME



**B**  
**4**  
**VERTICAL SECTION**  
SILL - MASONRY/ CONCRETE THROUGH FRAME



**GLAZING DETAIL**

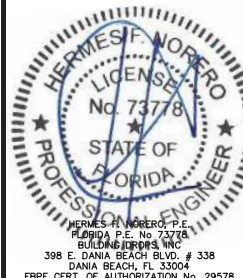
NOTE:  
GLASS TYPE & THICKNESS SHALL COMPLY WITH  
ASTM E 1300 GLASS CHARTS.

TITLE: **SERIES 120/130 HORIZONTAL SLIDER (NON-HVHZ/(NON-IMPACT) VERTICAL SECTIONS AND GLAZING DETAIL**

PREPARED BY: **BUILDING DROPS, INC.**  
398 E. DANIA BEACH BLVD., STE. 338  
DANIA BEACH, FL 33004  
PH: (954)399-8278  
FAX: (954)744-4738  
WEB: www.buildingdrops.com

REMARKS	BY	DATE
FBC 5th ED.CODE CHANGE	SM	06.03.14
74"x63"DP REVISION	SM	06.03.14
FBC 2017 CODE CHANGE	AG	10.03.17
2020 FBC CODE CHANGE	NUS	08.13.20

THE INSTALLATION DETAILS DESCRIBED HEREIN ARE GENERAL AND MAY NOT REFLECT ACTUAL CONDITIONS FOR A SPECIFIC SITE. IF SITE CONDITIONS CAUSE INSTALLATION TO DEVIATE FROM THE REQUIREMENTS DETAILED HEREIN, A LICENSED ENGINEER OR ARCHITECT SHALL PREPARE SITE SPECIFIC DOCUMENTS FOR USE WITH THIS DOCUMENT.



FL #:

**FL20472**

DATE: **10.03.17**

DWG. BY:	CHK. BY:
<b>AR/AG</b>	<b>HFN</b>

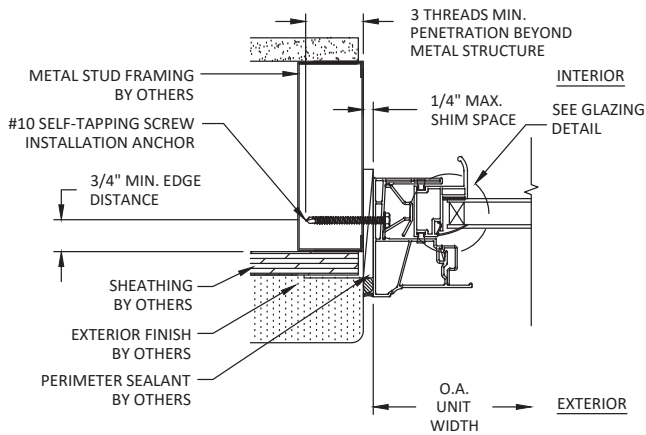
SCALE: **NTS**

DWG. #: **ATR116**

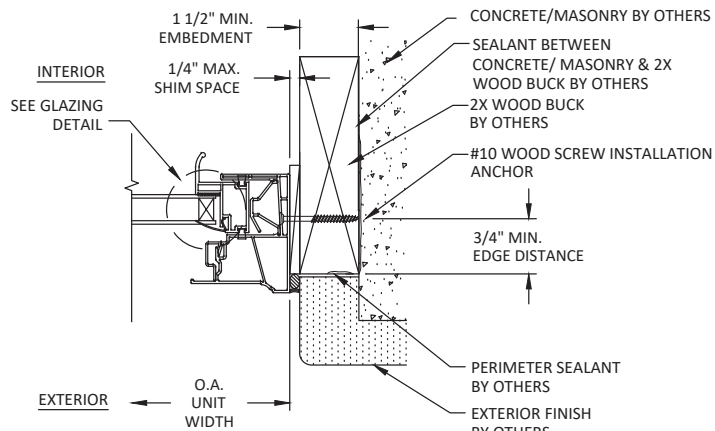
SECTION:

11/24/2020 7:28 PM

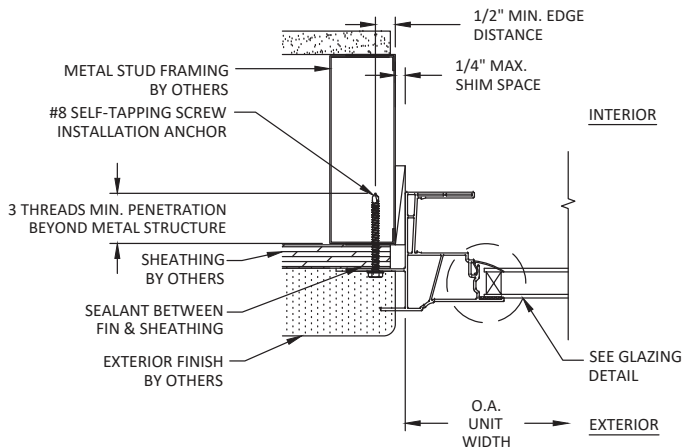
c:\users\jps50\desktop\manager\building\drops\project\atrium\companies\inc\dwg\5\120172\atri116\_11\_24\_2020.dwg



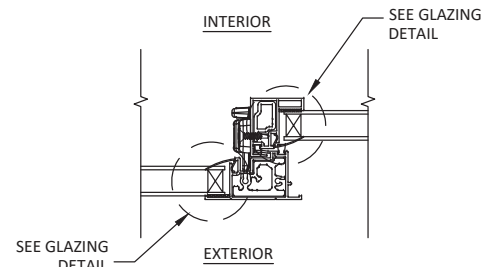
**D**  
**5** **HORIZONTAL SECTION**  
**OPERABLE JAMB - METAL STUD FRAME**  
**THROUGH FRAME**



**F**  
**5** **HORIZONTAL SECTION**  
**OPERABLE JAMB - 2X WOOD BUCK**  
**THROUGH FRAME**



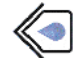
**E**  
**5** **HORIZONTAL SECTION**  
**FIXED JAMB - METAL STUD FRAME**  
**THROUGH FLANGE**



**G**  
**5** **HORIZONTAL SECTION**  
**MEETING STILE**


TITLE: **SERIES 120/130**  
**HORIZONTAL SLIDER**  
**(NON-HVHZ)/(NON-IMPACT)**  
HORIZONTAL SECTION

PREPARED BY: **BUILDING DROPS, INC.**  
398 E. DANIA BEACH BLVD., STE. 338  
DANIA BEACH, FL 33034  
PH: (954) 399-8278  
FAX: (954) 44-4738  
WEB: www.buildingdrops.com



REMARKS	BY	DATE
FBC 5th ED. CODE CHANGE	SM	06.03.14
74"X63" DP REVISION	SM	06.03.14
FBC 2017 CODE CHANGE	AG	10.03.17
2020 FBC CODE CHANGE	NUS	08.13.20

THE INSTALLATION DETAILS DESCRIBED HEREIN ARE GENERAL AND MAY NOT REFLECT ACTUAL CONDITIONS FOR A SPECIFIC SITE. IF SITE CONDITIONS CAUSE INSTALLATION TO DEVIATE FROM THE REQUIREMENTS DETAILED HEREIN, A LICENSED ENGINEER OR ARCHITECT SHALL PREPARE SITE SPECIFIC DOCUMENTS FOR USE WITH THIS DOCUMENT.



HERMES H. NORERO, P.E.  
Florida P.E. No. 73778  
BUILDING DROPS, INC.  
398 E. DANIA BEACH BLVD., # 338  
DANIA BEACH, FL 33034  
FBPE CERT. OF AUTHORIZATION No. 29578

FL #:

**FL20472**

DATE: **10.03.17**

DWG. BY:	CHK. BY:
<b>AR/AG</b>	<b>HFN</b>

SCALE: **NTS**

DWG. #: **ATR116**

SECTION: