

WALK'S EXXON - ADDITION 3221 W. US HIGHWAY 90 LAKE CITY, FLORIDA



WALK'S EXXON - ADDITION
3221 W. US HIGHWAY 90
LAKE CITY, FLORIDA

FINISH SCHEDULE							
NUMBER	NAME	FLOOR	WALLS				BASE
			NORTH	SOUTH	EAST	WEST	
07A	VESTIBULE	TILE	PAINT	PAINT	PAINT	PAINT	TILE
07B	VESTIBULE	TILE	PAINT	PAINT	PAINT	PAINT	TILE
08	CORRIDOR	TILE	PAINT	PAINT	PAINT	PAINT	TILE
09	MEIS	TILE	PAINT	PAINT	PAINT	PAINT	TILE
10	UTILITY	SEALER	PAINT	PAINT	PAINT	PAINT	TILE
11	SHOWERS	TILE	PAINT	PAINT	PAINT	PAINT	TILE
12	STORAGE	SEALER	PAINT	PAINT	PAINT	PAINT	TILE

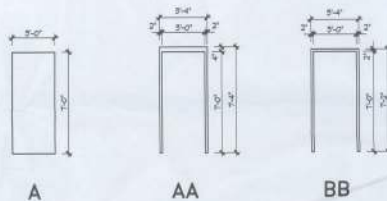
DOOR SCHEDULE							
ID	SPN	HTH	HT	TK	HTL	FRAME MATL.	DR/PN. SIZ./GRP.
108	A	3'-0"	7'-0"	1 3/4"	SK	SK	AAA 1
101	A	3'-0"	7'-0"	1 3/4"	SK	SK	AAA 2
10	A	3'-0"	7'-0"	1 3/4"	SK	SK	ABB 3
8	A	3'-0"	7'-0"	1 3/4"	SK	SK	ABB 2
12	A	3'-0"	7'-0"	1 3/4"	SK	SK	AAA 4

DESIGN CRITERIA

- FLORIDA BUILDING CODE 2010.
- FLORIDA FIRE PREVENTION CODE 2010.
- EXISTING BUILDING = 2,870 GROSS SQUARE FEET.
- NEW BUILDING ADDITION = 804 GROSS SQUARE FEET.
- OCCUPANCY CLASSIFICATION = MERCANTILE GROUP M.
- TYPE OF EXISTING AND NEW BUILDING CONSTRUCTION IS TYPE V.B.

REMARKS

- INSTALL CEILING AS HIGH AS POSSIBLE OR TO MATCH EXISTING.
- FLOOR AND BASIC TILE SHALL BE AS REQUESTED BY OWNER.
- CONCRETE FLOOR SEALER IN ROOMS 10 AND 12 SHALL BE EQUAL TO SEAMLESS 80 UNDERLAYMENT SPECIFY WITH NON-SLIP GRAINLESS.
- ALL COLOR SELECTIONS SHALL BE BY OWNER.



DOOR AND FRAME ELEVATIONS

DOOR HARDWARE GUIDE SCHEDULE

HARDWARE GROUP 1			
3	HEAVY DUTY HINGE	4 1/2" X 4 1/2" - 5 KNOGULE - NON RESING PWB	HANGER
1	CYLINDER	PER OWNER'S INSTRUCTION - RH	SANDBLAST
1	EXIT DEVICE	32 HC 8004 EL	SANDBLAST
1	GLASS	36 X 36	ROCKGLASS
1	HIGH PLATE	6 1/2" X 8" X 3/4"	ROCKGLASS
1	SEAL	588 017	PERNO
1	THRESHOLD	2008AV X 36"	PERNO
HARDWARE GROUP 2			
3	HEAVY DUTY HINGE	4 1/2" X 4 1/2" - 5 KNOGULE - NON RESING PWB	HANGER
1	DRACBOLT	4871	SANDBLAST
1	SHIM PLATE	132 X 4" X 3/4"	ROCKGLASS
1	HALL PLATE	125 X 100	ROCKGLASS
1	GLASS	36 X 36	SANDBLAST
1	HIGH PLATE	6 1/2" X 8" X 3/4"	ROCKGLASS
1	EXIT DEVICE	808	ROCKGLASS
HARDWARE GROUP 3			
3	HEAVY DUTY HINGE	4 1/2" X 4 1/2" - 5 KNOGULE - NON RESING PWB	HANGER
1	LOCKSET	8200 SERIES WITH HELI TECH - STOREROOM	SANDBLAST
1	CYLINDER	PER OWNER'S INSTRUCTION	ROCKGLASS
1	HALL STOP	6 1/2" X 8" X 3/4"	ROCKGLASS
1	HIGH PLATE	808	ROCKGLASS
1	EXIT DEVICE	808	ROCKGLASS
HARDWARE GROUP 4			
3	HEAVY DUTY HINGE	4 1/2" X 4 1/2" - 5 KNOGULE - NON RESING PWB	HANGER
1	LOCKSET	8200 SERIES WITH HELI TECH - STOREROOM	SANDBLAST
1	CYLINDER	PER OWNER'S INSTRUCTION - RH	ROCKGLASS
1	HIGH PLATE	6 1/2" X 8" X 3/4"	ROCKGLASS
1	SEAL	588 017	PERNO
1	THRESHOLD	2008AV X 36"	PERNO

STRUCTURAL DESIGN CRITERIA

FLORIDA BUILDING CODE 2010, ASCE 7-10 AND ACI 318-08

- ROOF DEAD LOAD = 13 PSF
- ROOF LIVE LOAD = 30 PSF
- ULTIMATE DESIGN WIND SPEED (3-SECOND GUST) = 118 MPH
- NOMINAL DESIGN WIND SPEED = 45 MPH
- WIND IMPORTANCE FACTOR = 1.5
- RISK CATEGORY = II
- WIND EXPOSURE = B
- APPLICABLE ENCLOSURE CLASSIFICATION = ENCLOSED
- INTERNAL PRESSURE COEFFICIENT = +/- 0.18
- COMPONENTS AND CLADDING DESIGN WIND PRESSURE = 25.4 PSF
- ASSUMED ALLOWABLE SOIL PRESSURE = 2,000 PSF
- REINFORCED CONCRETE = 3,000 PSI

SHEET INDEX

- G-1 GENERAL PROJECT COVER SHEET
- D-1 DEMOLITION PLAN
- A-1 FOUNDATION PLAN
- A-2 FLOOR PLAN
- A-3 EXTERIOR ELEVATIONS
- A-4 SECTIONS
- A-5 ROOF FRAMING PLAN AND ROOF PLAN
- A-6 REFLECTED CEILING PLAN AND RESTROOM DIMENSION PLAN

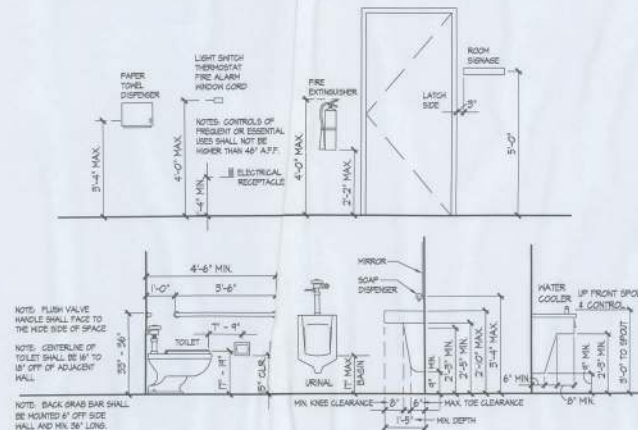
OCCUPANT LOAD CALCULATIONS

- TOTAL NET FLOOR AREA = 3,674
- TOTAL NET FLOOR AREA OF ACCESSORY SPACES = 164
- OCCUPANT LOAD OF ACCESSORY SPACES = 4
- TOTAL NET FLOOR AREA OF MERCANTILE SPACES = 2,548
- OCCUPANT LOAD OF MERCANTILE SPACES = 85
- TOTAL OCCUPANT LOAD = 89

PLUMBING FIXTURE CALCULATIONS

- TOTAL OCCUPANT LOAD = 89
- 44 MALE AND 44 FEMALE
- ONE WATER CLOSET REQUIRED FOR MALE AND FEMALE
- ONE LAVATORY REQUIRED FOR MALE AND FEMALE

STANDARD MOUNTING PER A.D.A. REQUIREMENTS



Kail Partners
INDUSTRIAL & RESIDENTIAL
ARCHITECTS
133-217-4553
www.kailpartners.com

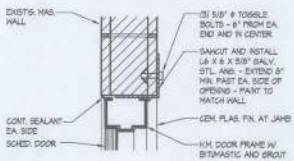


1418

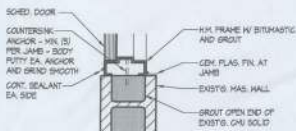
G-1

B

- NOTES:**
1. FILL CELLS EA SIDE OF OPNG UP TO BOTTM OF ANG.
 2. NEW STL. ANG. SHALL EXTEND 6" MIN. BEYOND OPNG. EA SIDE.
 3. PROVIDE KNOCKOUT AT BOTTM OF WALL TO ENSURE PROPER FILLING OF CELLS.
 4. PRIOR TO REMOVAL OF ENTIRE BLOCKOUT FOR NEW OPNG, VERTICALLY SAWCUT AT OPNG EDGES AND KNOCKOUT BLOCK FACES TO PROVIDE GROUT AS REQD. PROVIDE HORZ. SAWCUT AND INSTALL LITTLE ASSUREMENT REMOVE REINFORCER OF BLOCKOUT WHEN INSTALLATION OF OPNG REINFORCEMENT IS COMPLETE.



DOOR HEAD DETAIL
1 1/2" = 1'-0"

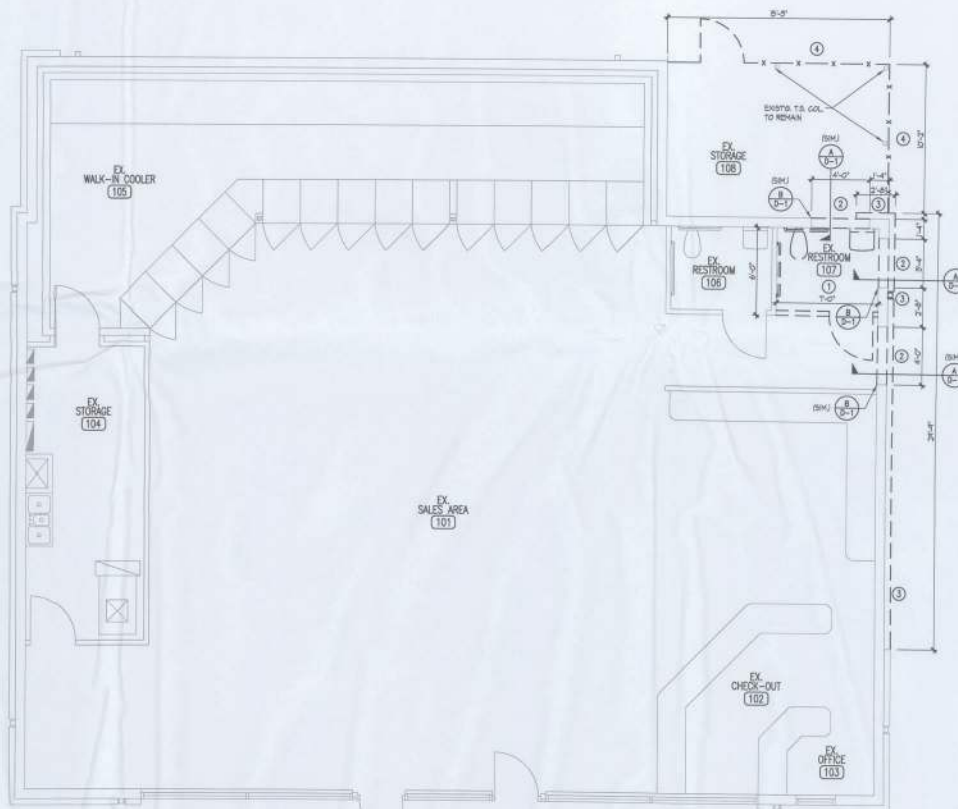


DOOR JAMB DETAIL
1 1/2" = 1'-0"

DEMOLITION NOTES

1. REMOVE EXIST'G. DOOR, HALL, RESTROOM ACCESSORIES, FLOORING, FINISHES, CEILING, ETC. IN AREA INDICATED - PATCH AND PREP ALL REMAINING SURFACES FOR NEW FINISHES AS SHOWN ON SHEET 0-1 OR AS A MINIMUM TO MATCH EXIST'G. OTHERWISE.
2. SAWCUT NEW 4'-0" OR 5'-4" WIDE AS INDICATED 3/4" HIGH GATED OPNG. IN EXIST'G. CHU WALL - PATCH AND PREP ALL REMAINING SURFACES FOR NEW FINISHES AS DETAILED OR SHOWN ON SHEET 0-1 OR AS A MINIMUM TO MATCH EXIST'G. OTHERWISE.
3. REMOVE EXIST'G. BRICK VENEER AND DOWNPOUT AS INDICATED AND TO COORDINATE WITH NEW WORK - REFER TO THE EXTERIOR ELEVATION ON SHEET A-2 - PATCH AND PREP ALL REMAINING SURFACES FOR NEW FINISHES AS DETAILED OR NOTED THROUGHOUT THE DRAWINGS OR AS A MINIMUM TO MATCH EXIST'G. OTHERWISE.
4. REMOVE EXIST'G. CHAIN LINK FENCING AND GATE AND CONC. SLAB AS REQD. FOR NEW FOOTINGS AND TO HAVE A LEVEL FLOOR IN THIS AREA - COORD. IN THE FOUNDATION PLAN AND FLOOR PLAN - PATCH AND PREP ALL REMAINING SURFACES FOR NEW FINISHES OR AS A MINIMUM TO MATCH EXIST'G. OTHERWISE.
5. PREPARE FLOORS, HALLS AND CEILING FOR NEW FINISHES AS REQD. FOR NEW FINISHES OR AS A MINIMUM TO MATCH EXIST'G. OTHERWISE - REFER TO SHEET 0-1 FOR FINISH SCHEDULE - TYPICAL NOTE.

WALL LEGEND



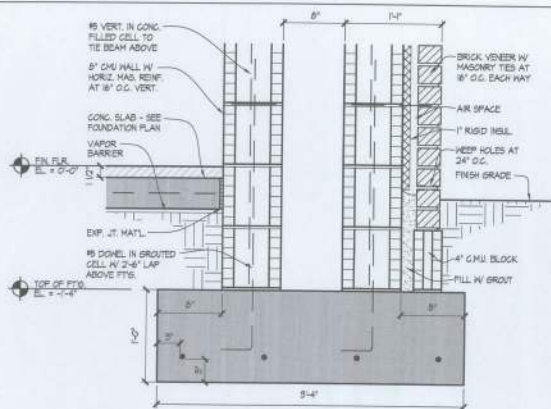
DEMOLITION PLAN
1/4" = 1'-0"

WALK'S EXXON - ADDITION
3221 W. US HIGHWAY 90
LAKE CITY, FLORIDA

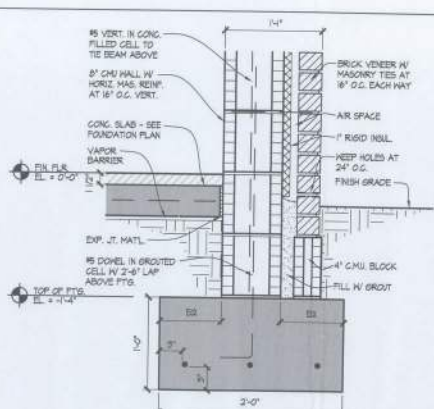
Kail Partners
ARCHITECTURE & INTERIORS
ARCHITECTURE
GENERAL CONTRACTOR
3221 W. US HWY 90
LAKE CITY, FL 33702
www.kailpartners.com



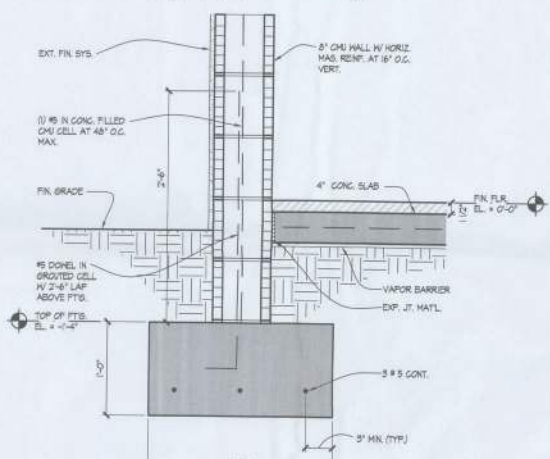
5/20/14
1418
D-1



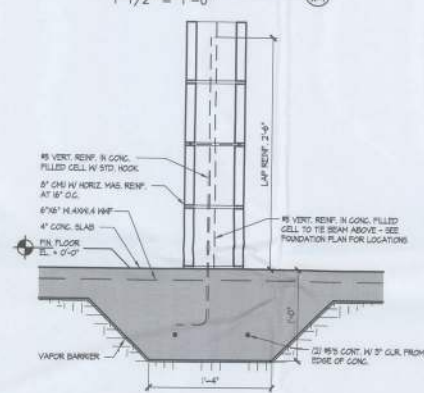
FOOTING DETAIL A
1 1/2" = 1'-0"



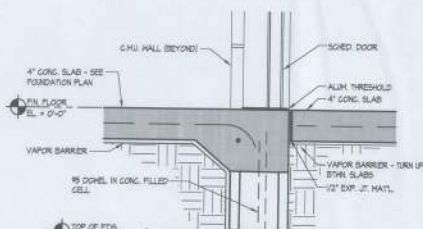
FOOTING DETAIL B
1 1/2" = 1'-0"



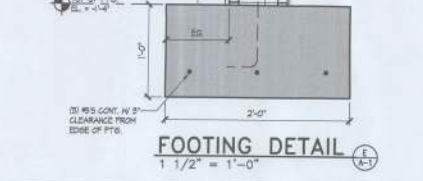
FOOTING DETAIL C
1 1/2" = 1'-0"



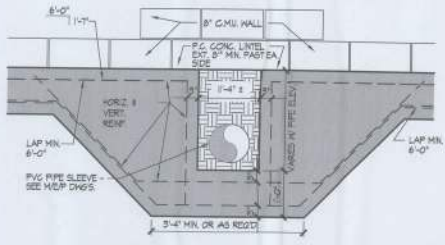
FOOTING DETAIL D
1 1/2" = 1'-0"



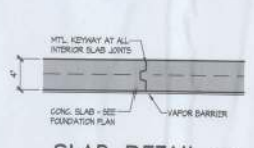
FOOTING DETAIL E
1 1/2" = 1'-0"



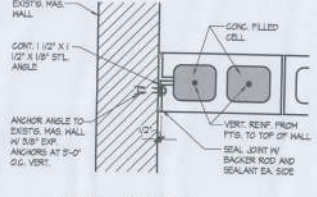
FOOTING DETAIL F
1 1/2" = 1'-0"



FOOTING DETAIL G
1 1/2" = 1'-0"



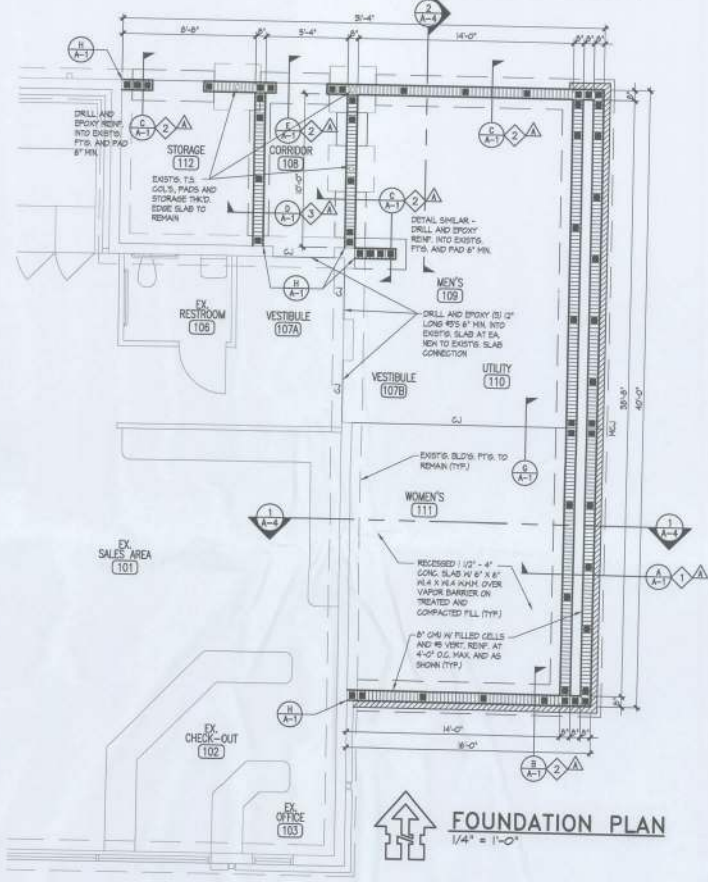
SLAB DETAIL A
1 1/2" = 1'-0"



CMU DETAIL A
1 1/2" = 1'-0"

FOUNDATION SCHEDULE			CMU WALL REINF.			
DESIG.	SIZE (WIDTH X HEIGHT)	REINFORCING	REMARKS	DESIG.	WALL REINF.	FOOTING DOWELS
1	3'-4" X 1'-0"	(4) #5 CONT. BOTT.	CONTINUOUS FTG.	1	#5 @ 48" O.C. - EXT. #5 @ 12" O.C. - INT.	#5 @ 48" O.C. - EXT. #5 @ 48" O.C. - INT.
2	2'-0" X 1'-0"	(2) #5 CONT. BOTT.	CONTINUOUS FTG.	2	#5 @ 48" O.C.	#5 @ 48" O.C.
3	1'-4" X 1'-0"	(2) #5 CONT. BOTT.	THICKENED SLAB	3	#5 @ 48" O.C.	#5 @ 48" O.C.

ALL MASONRY WALL REINFORCING SCHEDULED TO BE #5'S SHALL BE LAPPED 30" MIN.



FOUNDATION PLAN
1/4" = 1'-0"

GENERAL NOTES:

- SEE DETAILS A/A-2 AND B/A-2 FOR HORIZ. JOINT REINF. AT CMU INTERSECTIONS AND CORNERS.
- SEE DETAILS C/A-2 AND D/A-2 FOR HORIZ. JOINT REINF. AT BOND AND TIE BM. INTERSECTIONS AND CORNERS.
- SEE DETAIL E/A-2 FOR REINF. AT DOOR OPNS'S. IN CMU WALLS.
- SEE DETAIL F/A-1 FOR STEPPED FTG. AT ALL PIPE PENETRATIONS - COORD. LOCATIONS W/ OTHER SUBCONTRACTORS.
- SEE DETAILS E/A-2 AND F/A-2 FOR CONTROL JOINT DETAILS.

WALK'S EXXON - ADDITION

ARCHITECTURE & INTERIORS

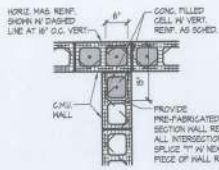
RAIL KILL

REGISTERED PROFESSIONAL ENGINEER

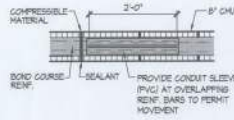
1/20/18

141

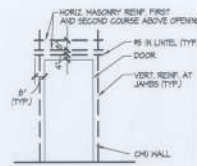
A-1



REINF. DETAIL AT CMU INTERSECTIONS
3/4" = 1'-0"



CONTROL JOINT DETAIL
3/4" = 1'-0"



CMU REINF. DETAIL
1/4" = 1'-0"

LIFE SAFETY LEGEND

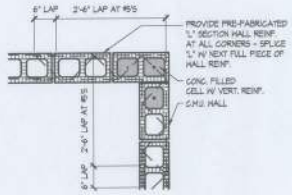
- EXIT LIGHT - ARROW REPRESENTS DIRECTION OF EXIT
- HEAT DETECTOR
- PANIC DEVICE
- HALL HAND FIRE EXTINGUISHER
- PRIMARY EGRESS W/ EXIT CAPACITY
- SECONDARY EGRESS

RENOVATION NOTES

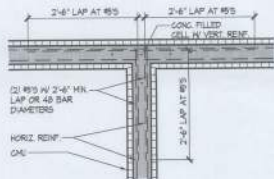
- (A) NEW SELF LEVELING FLOORING OVER EXIST. CONC. SLAB TO BRING SLOPED FLOORING LEVEL WITH MAIN FLOOR SLAB
- (B) NEW 4'-0" WIDE X 7'-4" HIGH GATED OPENING IN EXIST. CMU WALL
- (C) NEW FUNCTIONAL FEATURES: TOILET PAPER DISPENSERS, SOAP DISPENSERS, PAPER TOWEL DISPENSERS, WHITE RECEPTACLES, GRAB BARS, MIRRORS AND OTHER RESTROOM ACCESSORIES INSTALLED PER ADA COMPLIANCE - REFER TO DRAWING SHEET G-1 FOR TYPICAL CLEARANCES AND DIMENSIONS
- (D) NEW FLOOR MOUNTED HOPF GAK WITH WALL MOUNTED HOPF HOLDERS, WATER HEATER AND SHELVING
- (E) REFER TO DRAWING SHEET G-1 FOR DOOR SCHEDULE - TYPICAL NOTE
- (F) REFER TO DRAWING SHEET G-1 FOR FINISH SCHEDULE - TYPICAL NOTE

WALL LEGEND

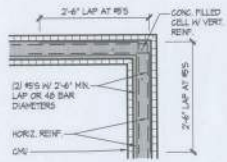
- EXISTING CMU WALL TO REMAIN
- NEW 8" CMU W/ HORIZ. HAS. REINF. AT 8" O.C. - CONC. FILLED CELLS W/ 8" VERT. REINF. AS SHOWN AND AT 4'-0" O.C. MAX. FOR EXTERIOR WALLS AND AT 8'-0" O.C. MAX. FOR INTERIOR WALLS - FORM WALL. AT ALL CELLS NOT FILLED W/ CONC. IN EXTERIOR WALLS AND BETWEEN CONDITIONED AND NON-CONDITIONED ROOMS
- NEW 8" CMU W/ HORIZ. HAS. REINF. AT 8" O.C. - CONC. FILLED CELLS W/ 8" VERT. REINF. AS SHOWN AND AT 4'-0" O.C. MAX. - BRCK. VENEER W/ MESH AT 8" O.C. AND REEF HOLES ADV. BRACKS AT 33" O.C. - FORM WALL AT ALL CELLS NOT FILLED W/ CONC. IN EXTERIOR WALLS
- NEW 8-1/2" 3D GA. MTL. BRKS AT 8" O.C. W/ 8" HOPF MESH REINSTR. BRK. BX. EA. SIDE



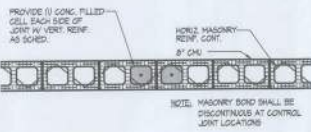
REINF. DETAIL AT CMU CORNERS
3/4" = 1'-0"



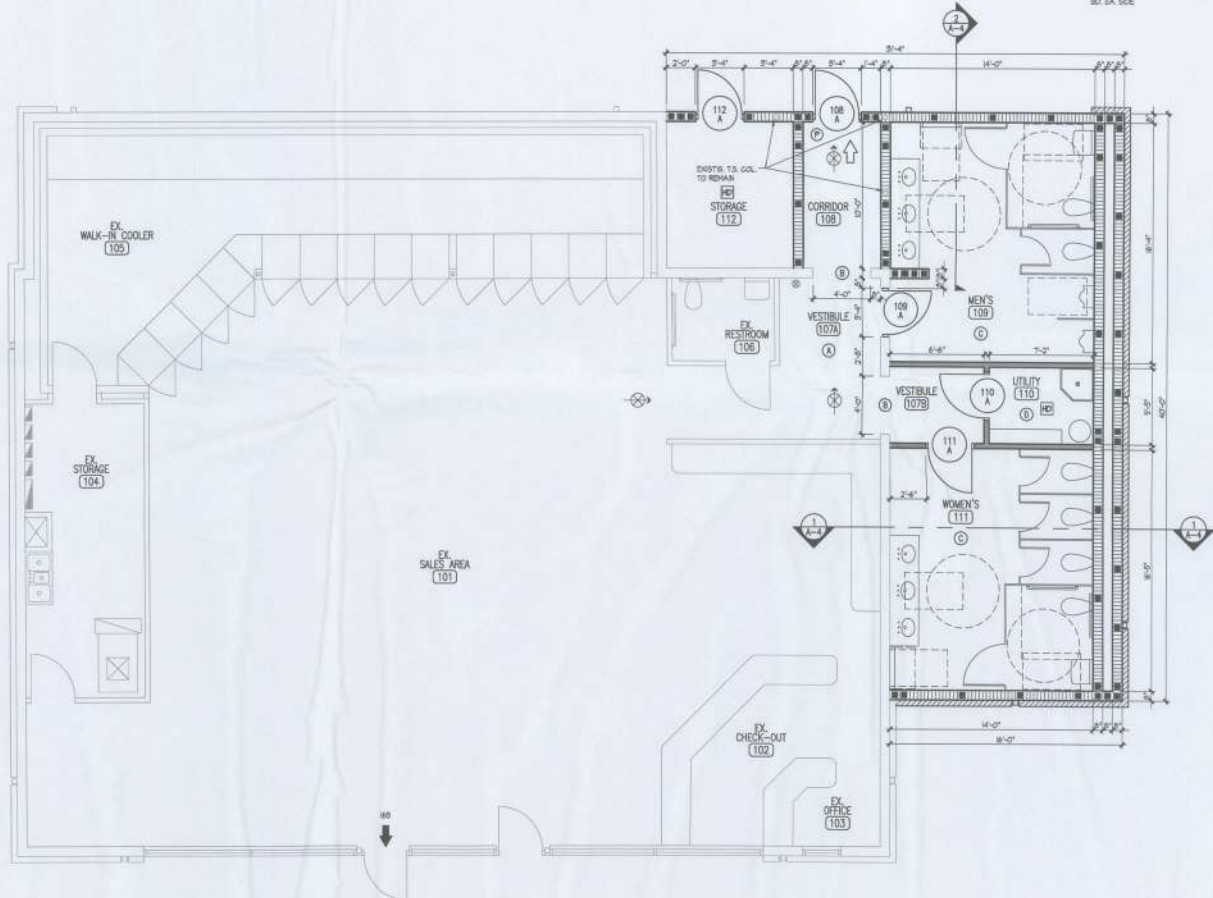
REINF. DETAIL AT CMU BOND BM. INTERSECTIONS
3/4" = 1'-0"



REINF. DETAIL AT CMU BOND BM. CORNERS
3/4" = 1'-0"



CONTROL JOINT DETAIL
3/4" = 1'-0"



FLOOR PLAN
1/4" = 1'-0"

WALK'S EXXON - ADDITION
3221 W. US HIGHWAY 90
LAKE CITY, FLORIDA

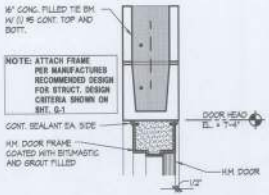
Kail Partners
ARCHITECTURE & INTERIORS
ARCHITECTS
1000 W. UNIVERSITY AVENUE
SUITE 200
LAKE CITY, FLORIDA 32801
352.871.1533
www.kailpartners.com



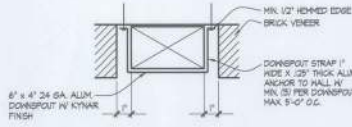
1418

A-2

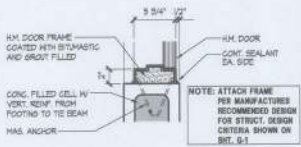
OF 8



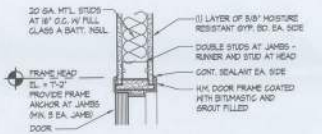
DOOR HEAD DETAIL
1 1/2" = 1'-0"



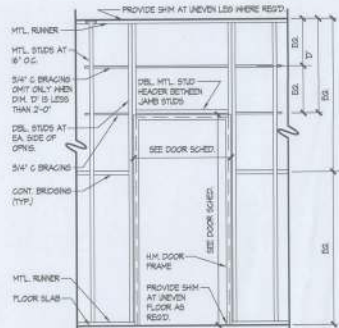
DOWNSPOUT DETAIL
3" = 1'-0"



DOOR JAMB DETAIL
1 1/2" = 1'-0"

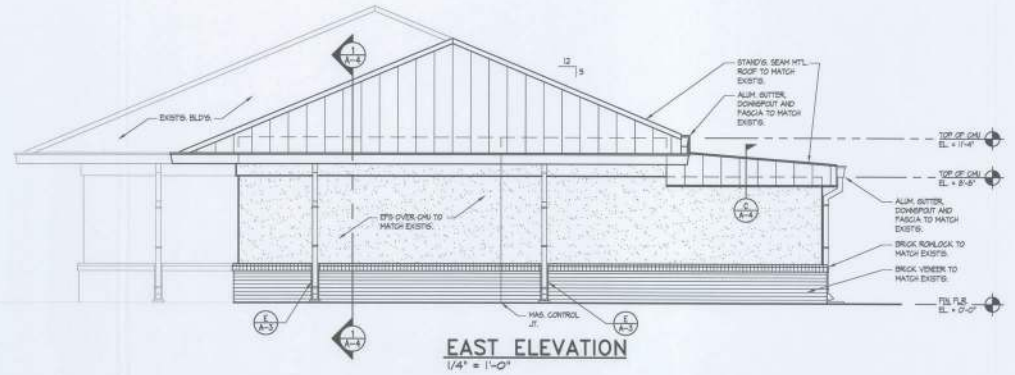


INTERIOR DOOR DETAIL
1 1/2" = 1'-0" FOR DOORS 101A AND 101A

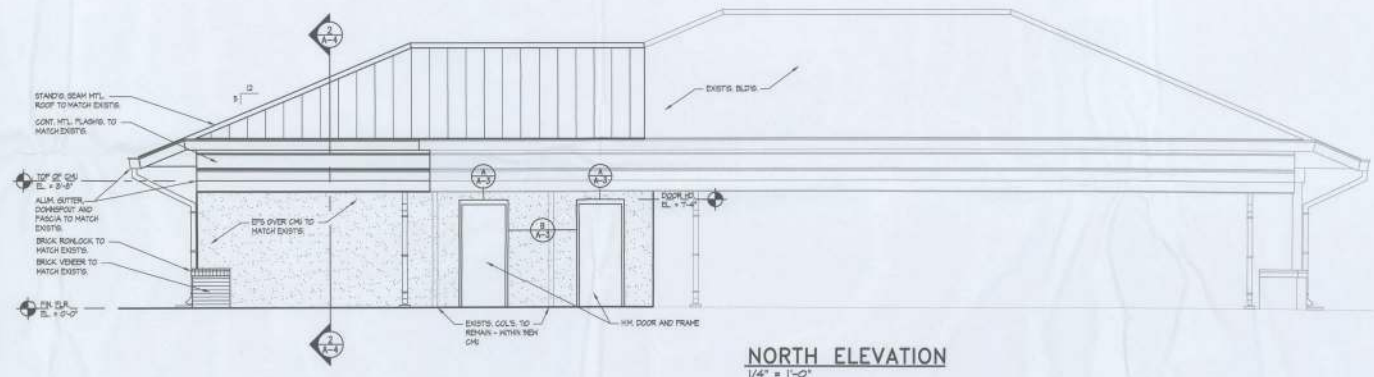


- NOTES:**
1. ALL METAL STUDS AT FRAMES SHALL BE ANCHORED TOP AND BOTTOM.
 2. ADD THIRD STUD AT EACH SIDE OF DOOR FRAME FOR DOORS THAT EXCEED 80 LBS. AND/OR OPENINGS MORE THAN 3'-4" WIDE.
 3. STUD TRACK AT DOOR HEAD SHALL BE CUT, BENT AND FASTENED TO JAMB STUDS.

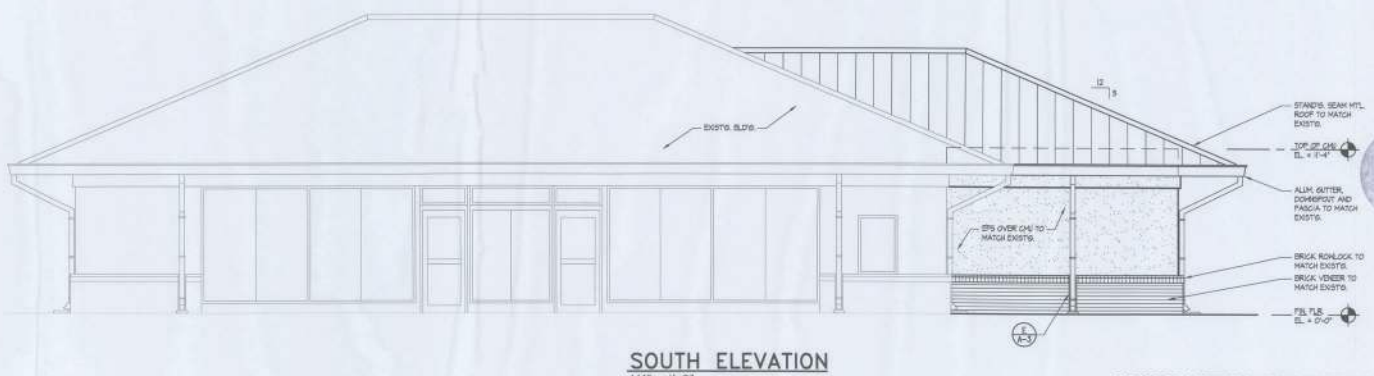
DOOR FRAMING DETAIL
NTS FOR DOORS 101A AND 101A



EAST ELEVATION
1/4" = 1'-0"



NORTH ELEVATION
1/4" = 1'-0"



SOUTH ELEVATION
1/4" = 1'-0"

CONSTRUCTION DOCUMENTS

WALK'S EXXON - ADDITION
3221 W. US HIGHWAY 80
LAKE CITY, FLORIDA

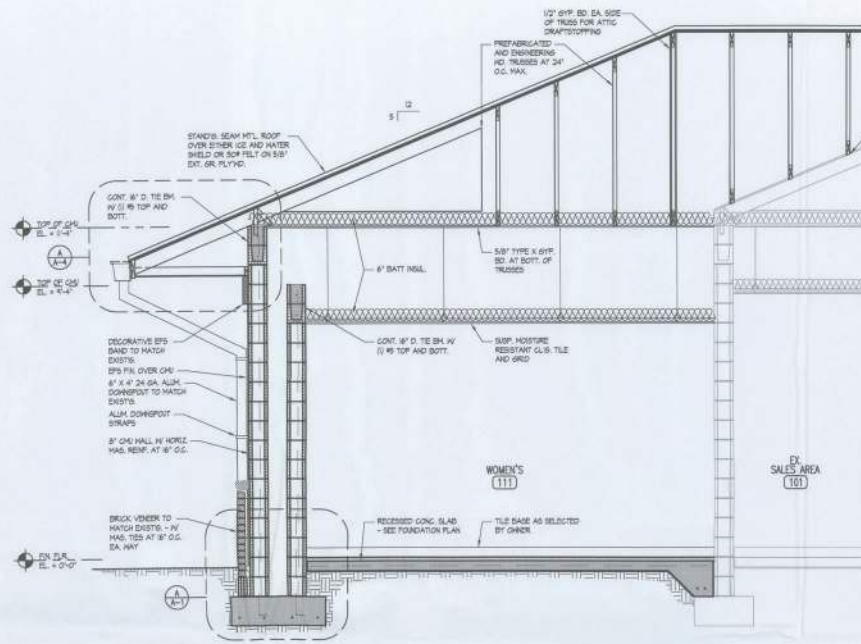
Kail Partners
ARCHITECTS & ENGINEERS
A LICENSED ARCHITECTURAL FIRM
CORPORATE OFFICE: 1000 N. GULF BLVD., SUITE 200, TAMPA, FL 33601
TEL: 813.281.1933
WWW.KAILPARTNERS.COM



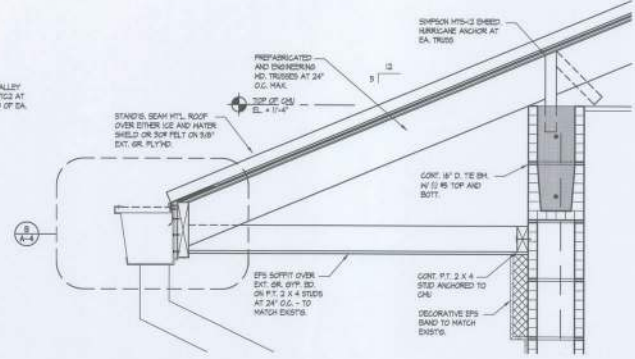
1418

A-3

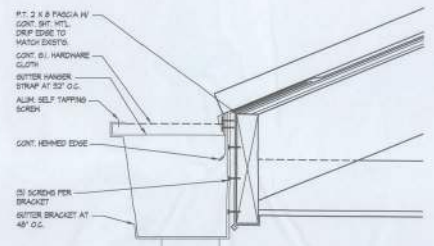
OF 8 SHEETS



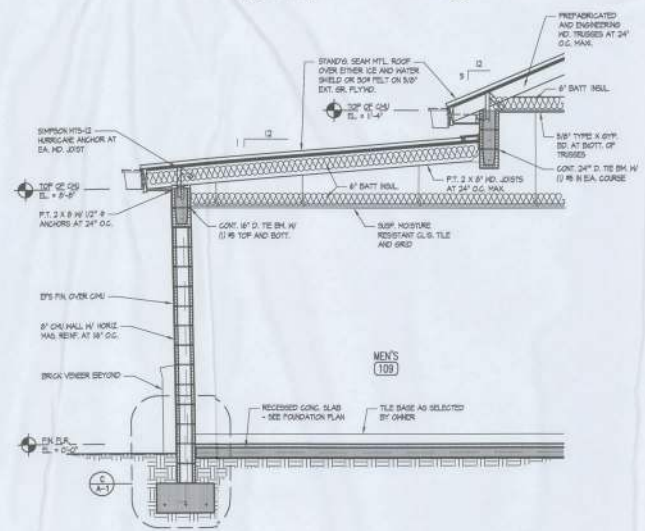
BUILDING SECTION A-A
1/2" = 1'-0"



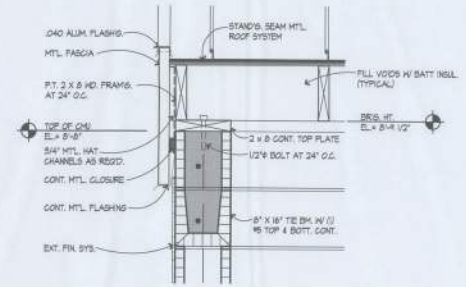
EAVE AND TRUSS BR'G. DETAIL A-A
1 1/2" = 1'-0"



GUTTER DETAIL A-A
3" = 1'-0"



BUILDING SECTION B-B
1/2" = 1'-0"



RAKE DETAIL C-C
1 1/2" = 1'-0"

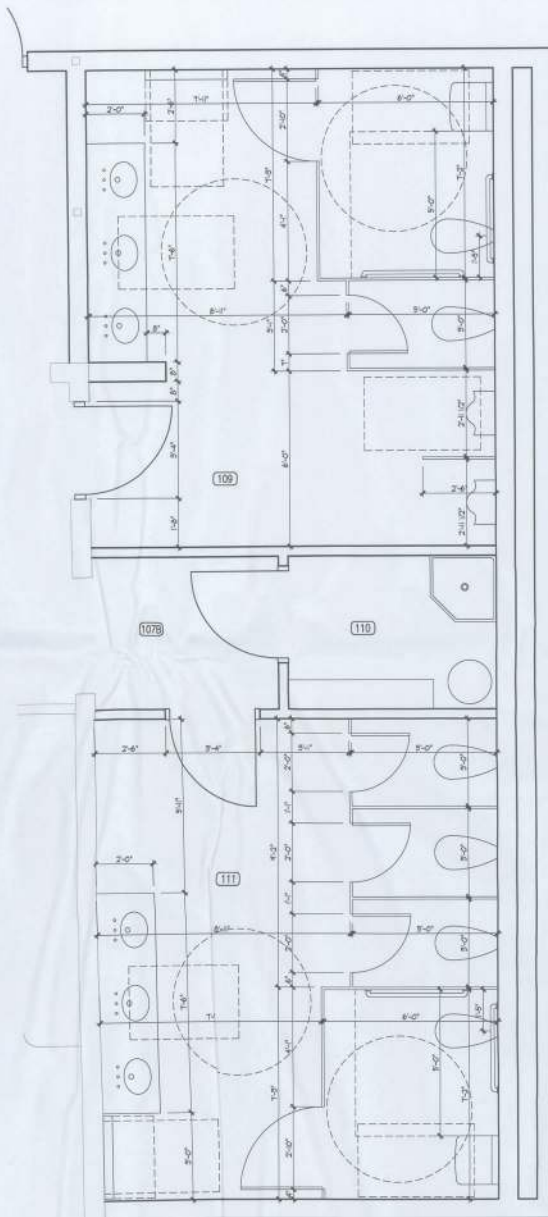
WALK'S EXXON - ADDITION
3221 W. US HIGHWAY 90
LAKE CITY, FLORIDA

Kail Partners
ARCHITECTURE & INTERIORS
KAIL PARTNERS
ARCHITECTURE & INTERIORS
3221 W. US HIGHWAY 90
LAKE CITY, FLORIDA 32056
407.885.1111
www.kailpartners.com

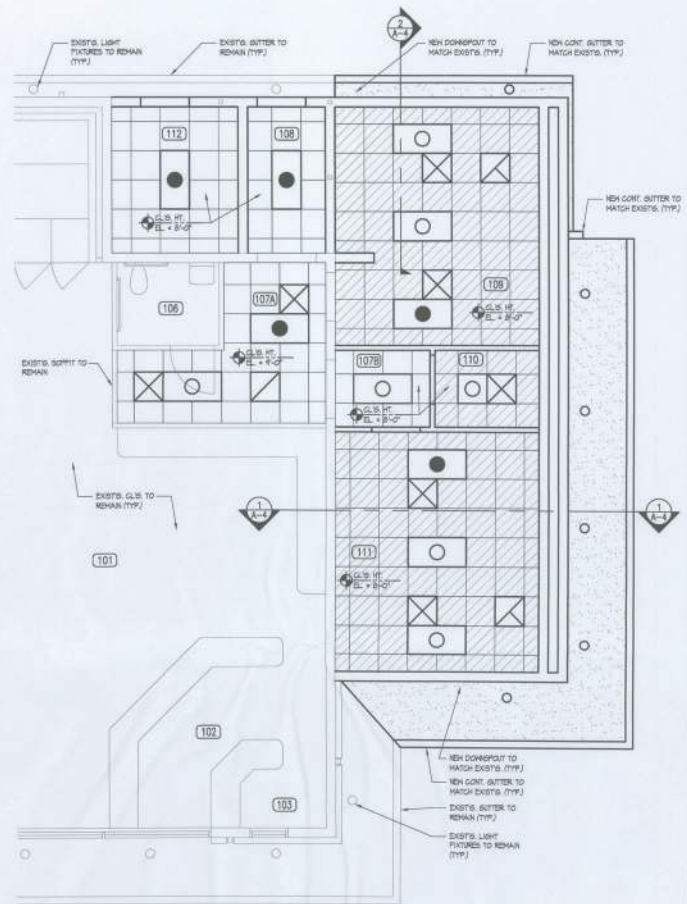


1418

A-4



RESTROOM DIMENSION PLAN
1/2" = 1'-0"



CEILING LEGEND

- | | | | |
|--|---|--|---|
| | NEW SUSPENDED ACOUSTICAL TILE CEILING SYSTEM | | NEW LIGHT FIXTURE TO MATCH EXIST. |
| | NEW SUSPENDED ACOUSTICAL TILE CEILING SYSTEM - MOISTURE RESISTANT | | NEW EMERGENCY LIGHT FIXTURE TO MATCH EXIST. |
| | EXIST. SOFFIT TO MATCH EXIST. - PROVIDE CORNING JOINTS PER MANUF. RECOMMENDATIONS | | NEW LIGHT FIXTURE TO MATCH EXIST. |
| | | | NEW SUPPLY AIR DIFFUSER |
| | | | NEW RETURN AIR GRILLE |
| | | | NEW EXHAUST |



REFLECTED CEILING PLAN

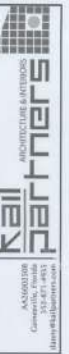
1/4" = 1'-0"

GENERAL NOTES

1. AT NEW SUSPENDED CEILING, ALL SUSPENSION SYSTEMS, INCLUDING LIGHT FIXTURES, SHALL BE SUSPENDED FROM STRUCTURE ABOVE - LIGHT FIXTURES TO BE SUSPENDED SEPARATELY FROM GRID OR ALL CORNERS.
2. NEW AIR DIFFUSERS AND REGISTERS SHALL BE SUPPORTED BY THE SUSPENDED GRID WHICH SHALL BE SUPPORTED BY THE WIRE AT 90° DIAGONAL CORNERS MINIMUM AT EACH DIFFUSER. THE WIRES ATTACHED TO STRUCTURE ABOVE BY ACOUSTICAL CEILING INSTALLER AND FINAL CONNECTIONS TO DIFFUSERS AND REGISTERS BY THE MECHANICAL INSTALLER.
3. THE CEILING SUBCONTRACTOR SHALL PROVIDE AND INSTALL ALL THE TIE WIRE FOR THE CEILING GRID, MECHANICAL ITEMS AND LIGHT FIXTURES. THE MECHANICAL AND ELECTRICAL SUBCONTRACTORS SHALL MAKE THE FINAL CONNECTIONS OF THEIR RESPECTIVE ITEMS TO THE TIE WIRE AND CEILING GRID.
4. REPORT ANY CONFLICTS PRIOR TO ANY INSTALLATION.
5. REFER TO THE FLOOR PLAN FOR NEW EXIT LIGHTS.

CONSTRUCTION DOCUMENTS

WALK'S EXXON - ADDITION
3221 W. US HIGHWAY 90
LAKE CITY, FLORIDA



1418

A-6

OF 6 SHEETS