



Board of County Commissioners

Regular Meeting

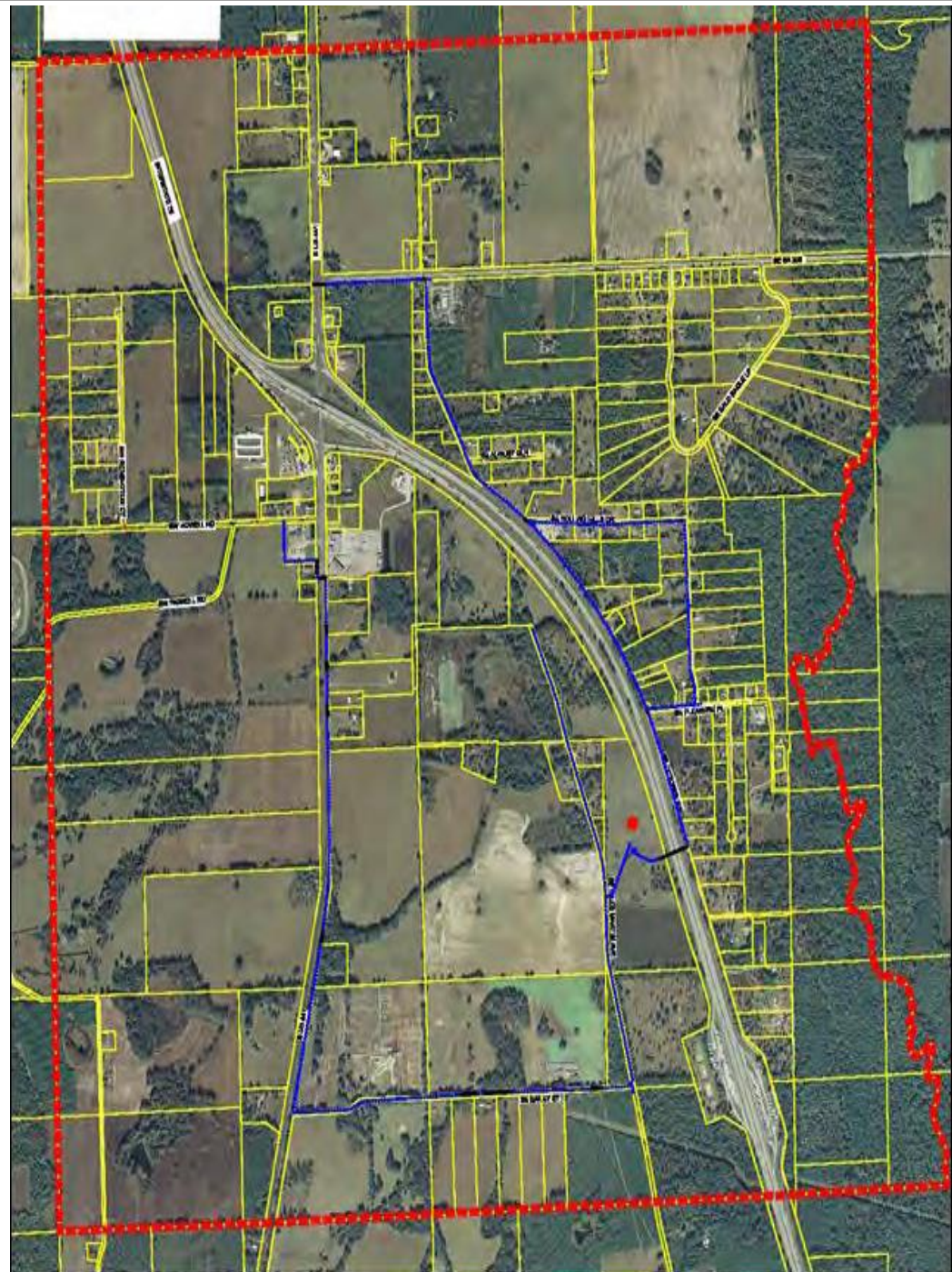
Thursday, August 17, 2017

5:30 PM

School Board Administrative Complex



Ellisville Tax Increment Area Resolution 2017R-33





Ellisville Tax Increment Area Resolution 2017R-33

- Establishes geographical boundaries
 - Provides for calculation of the tax increment
 - Establishes Ellisville Reserve Account
 - Authorizes pledge and appropriation of reserve funds
-
- **Recommended Motion:** Approve Resolution No. 2017R-33 – Ellisville Tax Increment Area